

## Product datasheet for **RC208925**

### ZDHHC13 (NM\_019028) Human Tagged ORF Clone

#### Product data:

Product Type:	Expression Plasmids
Product Name:	ZDHHC13 (NM_019028) Human Tagged ORF Clone
Tag:	Myc-DDK
Symbol:	ZDHHC13
Synonyms:	HIP3RP; HIP14L
Mammalian Cell Selection:	Neomycin
Vector:	pCMV6-Entry (PS100001)
E. coli Selection:	Kanamycin (25 ug/mL)



[View online »](#)

**ORF Nucleotide Sequence:**

>RC208925 representing NM\_019028.  
 Blue=ORF Red=Cloning site Green=Tag(s)

```
GCTCGTTAGTGAACCGTCAGAATTTTGTAAACGACTCACTATAGGGCGGCCGGGAATTCGTGACTG
GATCCGGTACCGAGGAGATCTGCCGCCCGGATCGCC
ATGGAGGGCGGGGCTGGGCTCGCAGTGCAGGAATCACAGCCATGGCCCCACCCTCCAGGATTTGGT
CGATATGGCATCTGTGCACATGAAAACAAGAAGCTTCCAATGCAAGAGAAGCTCTTCTCTTAGAG
GACTCTAGTAAGTGTGACATTGTCAAAGCTACTCAATACGGAATTTTGAACGATGTAAAGAGTTGGTA
GAAGCAGGATATGATGTAGCAACAGATAAAGAAAATGTGTCGCTTCTCATTGGGCTGCTATTAAC
AACAGACTGGATCTTGAAGTTTTATATTTCAAAGGTGCTGTTGTAGATCAGTTGGTGGAGATTTA
AATTCACTCCTCTTCACTGGGCCATCCGACAAGGACATTTACCTATGGTCATATTACTCCAGCAT
GGTGCAGACCCCACTCTTATTGATGGAGAGGATTGAGCAGCATCCACCTGGCAGTATTGTTCAACAC
ATGCTATTATAGCATATCTCATCTCAAAGGGACAGAGTGTGAATATGACAGATGTAATGGGCAGACA
CCTCTCATGTTATCAGCTCACAAAGTAATTGGCCAGAACCAACTGGATTTCTTTAAAGTTAATCCT
TCTCTCAATGTGGTTGATAAAATACACCAAAACTCCACTTCACTGGGCAGTTGCAGCAGAAATGTT
AATGCAGTTGATAAGCTTTTGGAAAGCTGGTTCTAGCCTGGATATCCAGAATGTTAAGGGAGAAACCT
CTTGATATGGCTCTACAAAACAAAATCAGCTCATTATTCATATGCTAAAAACAGAGCCAAAATGAGA
GCCAACAAAAGTTTCACTTTGGAGGTGGCTGCAGAAATGCGAGCTCTTCTGTGCTGATGCTTTCT
GTGATTACCATGTGGCTATTGGATACATATTGGACTTCAATTCAGATCTTGGCTTTTAAAGGATGT
CTTCTAGTAACACTGTTTTTCTGACATCTTGTTCAGGTTCTTGGTTGGGTATAAGAACCTTGTA
TACTTACCAACAGCCTTCTGCTAAGTTCTGTTTTTGGATTTTATGACTTGGTTCATCTATTTTTT
CCTGATTTAGCAGGAGCCCTTCTATTTCAAGTTTCATTTTCAAGCATAGTAGCCTTTCTATACTTTTT
TATAAGACTTGGCAACTGATCCAGGCTTCACTAAGCTTCTGAAGAAGAAAAGAAAGTGAATATCATC
ACCCTTGCAGAAACTGGCTCTCTGGACTTCAGGACATTTTGTACATCATGTCTTATAAGGAAGCCATTA
AGGTCCTCCACTGCCATGTATGCAACTGCTGTGGCTCGATATGATCAACTGCCTGTGGACTGGA
CGGTGCATAGTTTTGGCAACCATCACTATTACATATTCTTGTTTTTCTTTCCATGGTATGTGGC
TGGATTATATAGGATCTTTCATCTATTGTCCAGTCATTGTGCCACAACATTCAAAGAAGATGGATTA
TGGACTTACCTCAATCAGATTGTGGCTGTTCCCTTGGGTTTTATATCTTGATGCTAGCAACTTTC
CATTCTCATGGTCAACATTTTTATTATTAATCAACTCTTTCAGATTGCCTTTCTGGGCCTGACCTCC
CATGAGAGAATCAGCCTGCAGAAGCAGAGCAAGCATATGAAACAGACGTTGTCCCTCAGGAAGACACCA
TACAATCTTGATTATGCAGAACTGGCAGATTTCTTTCAGTGTGGCTGCTTTGGCTTGGTGAAGCCC
TGTGTGGTAGATTGGACATCACAGTATACCATGGTCTTTCACCCAGCCAGGGAGAAGTTCTTCGCTCA
GTA
ACGCGTACGCGGCCGCTCGAGCAGAACTCATCTCAGAAGAGGATCTGGCAGCAAATGATATCCTGGAT
TACAAGGATGACGACGATAAGGTTTAAACGGCCGGC
```

**Protein Sequence:**

>Peptide sequence encoded by RC208925  
 Blue=ORF Red=Cloning site Green=Tag(s)

```
MEGPGLGSQCRNHSHPHPPGFGRYGCIAHENKELANAREALPLIEDSSNCDIVKATQYGFIFERCKELV
EAGYDVRQPDKENVSLHWAANNRLDLVRFYISKGAVVDQLGGDLNSTPLHWAIRQGHLPVILLQHQ
GADPTLIDGEGFSSIHLLAVLFQHMPIIAYLISKQSVNMTDVNGQTPLMLSAHKVIGPEPTGFLKFN
SLNVVDKIHQNTPLHWAVAAGNVNAVDKLLLEAGSSLDIQNVKGETPLDMALQNKQLIIHMLKTEAKMR
ANQKFRWRWQKCELFLLMLSVITMWAIGYILDFNSDSWLLKGCLLVTLFSLFPRFLVGYKNLV
YLPATALLSSVFWIFMTWIFILFPDLGAPFYFSFIFSIYAFLYFFYKTWATDPGFTKASEEEKVNI
TLAETGSLDFRFTSCLIRKPLRSLHCHVCNCCVARYDQHCLWTGRCIGFGNHYYIFFLFLSMVCG
WIIYGSFIYLSHCATTFKEDGLWYLNQIVACSPWVLYLMLATFHFWSSTFLLNQLFQIAFLGLTS
HERISLQKQSKHMKQTLRLKTPYNLGFQNLADFFQCGCFGLVKPCVVDWTSQYTMVFHPAREKVLRS
V
TRTRPLEQKLISEEDLAANDILDYKDDDDKV
```

**Chromatograms:**

[https://cdn.origene.com/chromatograms/mk6845\\_h04.zip](https://cdn.origene.com/chromatograms/mk6845_h04.zip)

**Restriction Sites:** SgfI-MluI

**Cloning Scheme:**



**ACCN:** NM\_019028

**ORF Size:** 1866 bp

**OTI Disclaimer:** The molecular sequence of this clone aligns with the gene accession number as a point of reference only. However, individual transcript sequences of the same gene can differ through naturally occurring variations (e.g. polymorphisms), each with its own valid existence. This clone is substantially in agreement with the reference, but a complete review of all prevailing variants is recommended prior to use. [More info](#)

**OTI Annotation:** This clone was engineered to express the complete ORF with an expression tag. Expression varies depending on the nature of the gene.

**Components:** The ORF clone is ion-exchange column purified and shipped in a 2D barcoded Matrix tube containing 10ug of transfection-ready, dried plasmid DNA (reconstitute with 100 ul of water).

- Reconstitution Method:**
1. Centrifuge at 5,000xg for 5min.
  2. Carefully open the tube and add 100ul of sterile water to dissolve the DNA.
  3. Close the tube and incubate for 10 minutes at room temperature.
  4. Briefly vortex the tube and then do a quick spin (less than 5000xg) to concentrate the liquid at the bottom.
  5. Store the suspended plasmid at -20°C. The DNA is stable for at least one year from date of shipping when stored at -20°C.

**Note:** Plasmids are not sterile. For experiments where strict sterility is required, filtration with 0.22um filter is required.

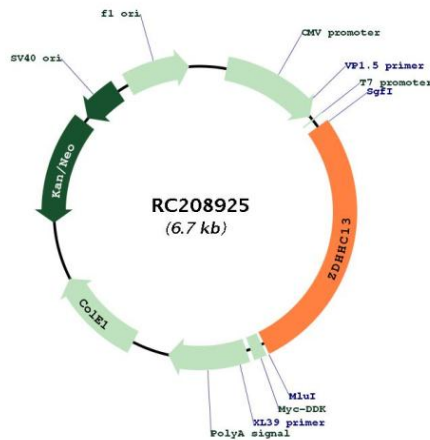
**RefSeq Size:** 2448 bp

**RefSeq ORF:** 1869 bp

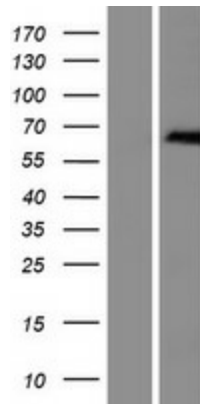
**Locus ID:** 54503

**UniProt ID:** [Q8IUH4](#)  
**Cytogenetics:** 11p15.1  
**Domains:** zf-DHHC, ANK  
**Protein Families:** Transmembrane  
**MW:** 70.9 kDa  
**Gene Summary:** Palmitoyltransferase for HTT and GAD2. May play a role in Mg(2+) transport. [UniProtKB/Swiss-Prot Function]

### Product images:



Circular map for RC208925



Western blot validation of overexpression lysate (Cat# [LY412798]) using anti-DDK antibody (Cat# [TA50011-100]). Left: Cell lysates from untransfected HEK293T cells; Right: Cell lysates from HEK293T cells transfected with RC208925 using transfection reagent MegaTran 2.0 (Cat# [TT210002]).