

Product datasheet for **RC208923**

TRM11 (TRMT11) (NM_001031712) Human Tagged ORF Clone

Product data:

Product Type:	Expression Plasmids
Product Name:	TRM11 (TRMT11) (NM_001031712) Human Tagged ORF Clone
Tag:	Myc-DDK
Symbol:	TRM11
Synonyms:	C6orf75; MDS024; TRM11; TRMT11-1
Mammalian Cell Selection:	Neomycin
Vector:	pCMV6-Entry (PS100001)
E. coli Selection:	Kanamycin (25 ug/mL)



[View online »](#)

ORF Nucleotide Sequence:

>RC208923 ORF sequence
 Red=Cloning site Blue=ORF Green=Tags(s)

TTTTGTAATACGACTCACTATAGGGCGGCCGGGAATTCGTCGACTGGATCCGGTACCGAGGAGATCTGCC
 GCC**CGCATCGCC**

ATGGCGCTGTCGTGTACCCTTAACAGGTATCTGCTCCTCATGGCGCAGGAGCATCTGGAGTTCGGCCTGC
 CGGAAATAAGTCTTTGCTTTTGGAGGTCAGTTTGCCAGCAGTCAAGAACTTATGGAAAGTC
 ACCATTTTGGATTCTTAGCATTCCCTCTGAAGATATTGCAAGAAATTTGATGAAACGGACAGTGTGTGCC
 AAGTCTATATTTGAACTATGGGGTCATGGACAATCTCCTGAGGAGCTGTACAGTTCTCTTAAAACTACC
 CTGTGGAGAAGATGGTTCCATTTCTACATTCGGACTCTACATAAAAAAAAGATTACACTTTTAAATAA
 GACATTGACACAAGAAGAGAAAAACAAGCGAATAGATGCACCTGAATTTCTGCCATTTGAAGGAAAAAGTG
 AATTTAAAGAAACCGCAACATGATTTTCTGTTTTGGAGGATTATGGTTTAGACCCAACTGCATCCCTG
 AGAATCCACATAATTTATTTTGGTAGATGGATTGCAGATGGACAGAGAGAGCTTATTGAGTCATACAG
 TGTCAAAAAGAGACACTTTATTGAAAACAAGTATGGATGCTGGTTTGCATTATTATGGCTAACCAT
 GGAAAAGTGAAAGAAAATGATATTGCTTTGATCCATTTGTTGGAACAGGTGGCCTGCAGATAGCATGTG
 CTCATTTTGGTGCATATGTGTATGGGACAGACATAGACTACAACACAGTTCATGGCTTGGGAAAGGCTAC
 TAGGAAAAACCGAAGTGGAGAGGACCAGATGAAAACATTAGGGCCAATCTTCGCAATATGGTTTAGAG
 AAGTATTACCTTGATGTCCTGGTTTCAGATGCATCTAACCTTCTGGAGGAAGGGCACATTTTATGATG
 CAATCATTACTGATCCTCCATATGGTATCAGAGAATCTACAAGAAGAAGGTTCCACAGAAGGAGATACC
 AAAGGGGATAGAAAAATGGGAAAAATGTCCAGAAAGCCATGTTCTGTTTCTTGAGTTATCATCTGAGT
 GATATGTTTCTTGACCTGTTAACTTCGCAGCTGAGACCCTCGTTTTAGTGAAGACTAGTCTATTGGT
 TACCGGTGTATACGCCAGAATACACTGAAGAGATGGTGCCTTGGCACCCCTTGCCTGGAAGCTGTAGCAA
 CTGCGAGCAGAAGCTTTCCAGTCACACATCAAGGCGCTTGATCACAAATGGAAAAGGTGAAGAAATTTGAG
 AATCGGGACCAAGTATTCACATCTGCTAAGTATGATTTTCTGCCATACCAAGGTCATAATTCCTCCGTG
 AGAAATATTTTAGTGGGGTAACAAAAAGAAATGCCAAGGAAGAAAAATCCACCCAGGAA

ACGCGTACGCGGCCGCTCGAGCAGAACTCATCTCAGAAGAGGATCTGGCAGCAAATGATATCCTGGATT
 ACAAGGATGACGACGATAAGGTTTAA

Protein Sequence:

>RC208923 protein sequence
 Red=Cloning site Green=Tags(s)

MALSCTLNRYLLLMAQEHLEFRLPEIKSLLLLFGGQFASSQETYGKSPFWILSIPSEDIARNLMKRTVCA
 KSIFELWGHGQSPPEELYSSLKNYPVEKMVPFLHSDSTYKIKIHTFNKLTQEEKIKRIDALEFLPFEGKV
 NLKKPQHVFVLEEDYGLDPNCIPENPHNIYFGRWIADGQRELIESYSVKKRHFIGNTSMDAGLSFIMANH
 GKVKENDIVFDFPVGTGGLQIACAHFGAYVYGTIDYNTVHGLGKATRKNQKWRGPDENIRANLRQYGLE
 KYLVDLVSADKPSWRKGYFDAIITDPPYGIRESRRTGSQKEIPKGIKWEKCPESHVPVLSYHLS
 DMFLDLLNFAAETLVLGRLVYWLVPYTPYEEMVPHWPCLELVSNCEQKLSSTSRRLITMEKVKKFE
 NRDQYSHLLSDHFLPYQGHNSFREKYFSGVTKRIAKEEKSTQE

TRTRPLEQKLISEEDLAANDILDYKDDDDKV

Chromatograms:

https://cdn.origene.com/chromatograms/mk6353_g08.zip

Restriction Sites:

Sgfl-Mlul

Cloning Scheme:


ACCN: NM_001031712

ORF Size: 1389 bp

OTI Disclaimer: The molecular sequence of this clone aligns with the gene accession number as a point of reference only. However, individual transcript sequences of the same gene can differ through naturally occurring variations (e.g. polymorphisms), each with its own valid existence. This clone is substantially in agreement with the reference, but a complete review of all prevailing variants is recommended prior to use. [More info](#)

OTI Annotation: This clone was engineered to express the complete ORF with an expression tag. Expression varies depending on the nature of the gene.

Components: The ORF clone is ion-exchange column purified and shipped in a 2D barcoded Matrix tube containing 10ug of transfection-ready, dried plasmid DNA (reconstitute with 100 ul of water).

Reconstitution Method:

1. Centrifuge at 5,000xg for 5min.
2. Carefully open the tube and add 100ul of sterile water to dissolve the DNA.
3. Close the tube and incubate for 10 minutes at room temperature.
4. Briefly vortex the tube and then do a quick spin (less than 5000xg) to concentrate the liquid at the bottom.
5. Store the suspended plasmid at -20°C. The DNA is stable for at least one year from date of shipping when stored at -20°C.

RefSeq: [NM_001031712.1](#), [NP_001026882.1](#)

RefSeq Size: 1967 bp

RefSeq ORF: 1392 bp

Locus ID: 60487

UniProt ID: [Q7Z4G4](#)

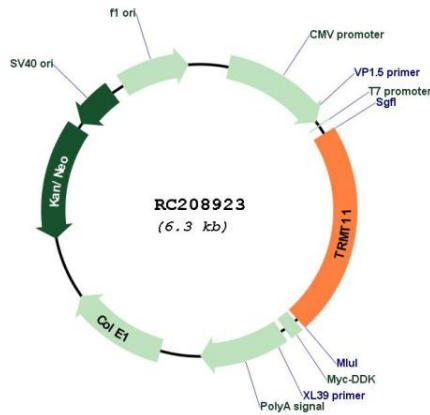
Cytogenetics: 6q22.32

Protein Pathways: Androgen and estrogen metabolism, Histidine metabolism, Selenoamino acid metabolism, Tyrosine metabolism

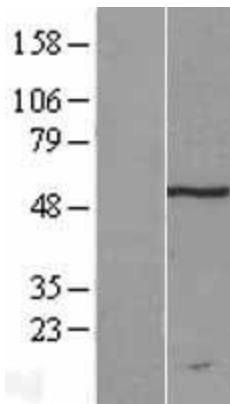
MW: 53.4 kDa

Gene Summary: Catalytic subunit of an S-adenosyl-L-methionine-dependent tRNA methyltransferase complex that mediates the methylation of the guanosine nucleotide at position 10 (m2G10) in tRNAs. [UniProtKB/Swiss-Prot Function]

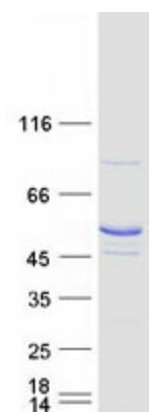
Product images:



Circular map for RC208923



Western blot validation of overexpression lysate (Cat# [LY422163]) using anti-DDK antibody (Cat# [TA50011-100]). Left: Cell lysates from untransfected HEK293T cells; Right: Cell lysates from HEK293T cells transfected with RC208923 using transfection reagent MegaTran 2.0 (Cat# [TT210002]).



Coomassie blue staining of purified TRM11 protein (Cat# [TP308923]). The protein was produced from HEK293T cells transfected with TRM11 cDNA clone (Cat# RC208923) using MegaTran 2.0 (Cat# [TT210002]).