

Product datasheet for RC208922

CDA (NM_001785) Human Tagged ORF Clone

Product data:

Product Type: Expression Plasmids
Product Name: CDA (NM_001785) Human Tagged ORF Clone
Tag: Myc-DDK
Symbol: CDA
Synonyms: CDD
Mammalian Cell Selection: Neomycin
Vector: pCMV6-Entry (PS100001)
E. coli Selection: Kanamycin (25 ug/mL)
ORF Nucleotide Sequence: >RC208922 representing NM_001785
Red=Cloning site Blue=ORF Green=Tags(s)

TTTTGTAATACGACTCACTATAGGGCGGCCGGAATTCGTCGACTGGATCCGGTACCGAGGAGATCTGCC
GCC**CGATCGCC**

ATGGCCAGAAGCGTCCTGCCTGCACCCTGAAGCCTGAGTGTGTCCAGCAGCTGCTGGTTTGCTCCAGG
AGGCCAAGAAGTCAGCCTACTGCCCTACAGTCACTTTCTGTGGGGCTGCCCTGCTCACCCAGGAGGG
GAGAATCTTCAAAGGGTCAACATAGAAAATGCCTGCTACCCGCTGGGCATCTGTGCTGAACGGACCGCT
ATCCAGAAGCCGCTCAGAAGGTACAAGGATTCAGGGCAATTGCTATCGCCAGTGACATGCAAGATG
ATTTTATCTCTCCATGTGGGGCCTGCAGGCAAGTCATGAGAGAGTTTGGCACCAACTGGCCCGTGTACAT
GACCAAGCCGGATGGTACGTATATTGTCATGACGGTCCAGGAGCTGCTGCCCTCCTCTTTGGCCCTGAG
GACCTGCAGAAGACTCAG

ACGCGTACGCGGCCGCTCGAGCAGAACTCATCTCAGAAGAGGATCTGGCAGCAAATGATATCCTGGATT
ACAAGGATGACGACGATAAGGTTTAA

Protein Sequence: >RC208922 representing NM_001785
Red=Cloning site Green=Tags(s)

MAQKRPACTLKPECVQQLLVCSQEAKKSAYCPYSHFPVGAALLTQEGRIFKGCNIENACYPLGICAERTA
IQKAVSEGYKDFRAIAIASDMQDDFISPCGACRQVMREFGTNWPVYMTKPDGTYIVMTVQELLPSSFGPE
DLQKTQ

TRTRPLEQKLISEEDLAANDILDYKDDDDKV

Chromatograms: https://cdn.origene.com/chromatograms/ja1449_d03.zip



[View online >](#)

Restriction Sites: SgfI-MluI

Cloning Scheme:



ACCN: NM_001785

ORF Size: 438 bp

OTI Disclaimer: Due to the inherent nature of this plasmid, standard methods to replicate additional amounts of DNA in E. coli are highly likely to result in mutations and/or rearrangements. Therefore, OriGene does not guarantee the capability to replicate this plasmid DNA. Additional amounts of DNA can be purchased from OriGene with batch-specific, full-sequence verification at a reduced cost. Please contact our customer care team at custsupport@origene.com or by calling 301.340.3188 option 3 for pricing and delivery.

The molecular sequence of this clone aligns with the gene accession number as a point of reference only. However, individual transcript sequences of the same gene can differ through naturally occurring variations (e.g. polymorphisms), each with its own valid existence. This clone is substantially in agreement with the reference, but a complete review of all prevailing variants is recommended prior to use. [More info](#)

OTI Annotation: This clone was engineered to express the complete ORF with an expression tag. Expression varies depending on the nature of the gene.

Components: The ORF clone is ion-exchange column purified and shipped in a 2D barcoded Matrix tube containing 10ug of transfection-ready, dried plasmid DNA (reconstitute with 100 ul of water).

Reconstitution Method:

1. Centrifuge at 5,000xg for 5min.
2. Carefully open the tube and add 100ul of sterile water to dissolve the DNA.
3. Close the tube and incubate for 10 minutes at room temperature.
4. Briefly vortex the tube and then do a quick spin (less than 5000xg) to concentrate the liquid at the bottom.
5. Store the suspended plasmid at -20°C. The DNA is stable for at least one year from date of shipping when stored at -20°C.

RefSeq: [NM_001785.1](#), [NP_001776.1](#)

RefSeq Size: 892 bp

RefSeq ORF: 441 bp

Locus ID: 978

UniProt ID: [P32320](#)

Cytogenetics: 1p36.12

Domains: dCMP_cyt_deam

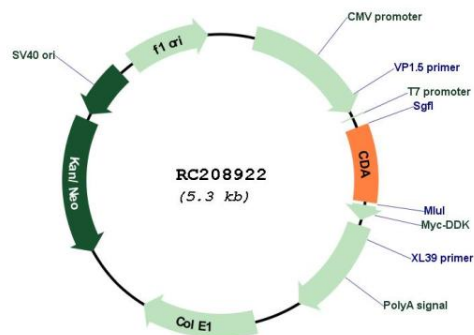
Protein Families: Stem cell - Pluripotency

Protein Pathways: Drug metabolism - other enzymes, Metabolic pathways, Pyrimidine metabolism

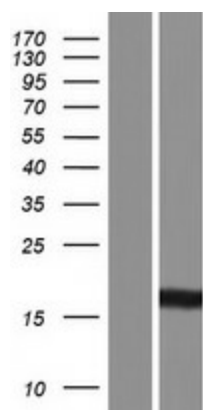
MW: 16 kDa

Gene Summary: This gene encodes an enzyme involved in pyrimidine salvaging. The encoded protein forms a homotetramer that catalyzes the irreversible hydrolytic deamination of cytidine and deoxycytidine to uridine and deoxyuridine, respectively. It is one of several deaminases responsible for maintaining the cellular pyrimidine pool. Mutations in this gene are associated with decreased sensitivity to the cytosine nucleoside analogue cytosine arabinoside used in the treatment of certain childhood leukemias. [provided by RefSeq, Jul 2008]

Product images:



Circular map for RC208922



Western blot validation of overexpression lysate (Cat# [LY419748]) using anti-DDK antibody (Cat# [TA50011-100]). Left: Cell lysates from untransfected HEK293T cells; Right: Cell lysates from HEK293T cells transfected with RC208922 using transfection reagent MegaTran 2.0 (Cat# [TT210002]).