

Product datasheet for **RC208919**

ICAM3 (NM_002162) Human Tagged ORF Clone

Product data:

Product Type:	Expression Plasmids
Product Name:	ICAM3 (NM_002162) Human Tagged ORF Clone
Tag:	Myc-DDK
Symbol:	ICAM3
Synonyms:	CD50; CDW50; ICAM-R
Vector:	pCMV6-Entry (PS100001)
E. coli Selection:	Kanamycin (25 ug/mL)
Cell Selection:	Neomycin



[View online »](#)

ORF Nucleotide Sequence:

>RC208919 ORF sequence
 Red=Cloning site Blue=ORF Green=Tags(s)

TTTTGTAATACGACTCACTATAGGGCGGCCGGGAATTCGTCGACTGGATCCGGTACCGAGGAGATCTGCC
 GCC**GCGATCGCC**

ATGGCCACCATGGTACCATCCGTGTTGTGGCCAGGGCCTGCTGGACTCTGCTGGTCTGCTGCTGCTGA
 CCCAGGTGTCCAGGGCAGGAGTTCCTTTGCGGGTGGAGCCCAGAACCCTGTGCTCTGCTGGAGG
 GTCCTGTTTGTGAAGTGCAGTACTGATTGTCCAGCTCTGAGAAAATCGCCTTGAGAGACGTCCCTATCA
 AAGGAGCTGGTGGCCAGTGGCATGGGCTGGGCAGCCTCAATCTCAGCAACGTGACTGGCAACAGTCGGA
 TCCTCTGCTCAGTGTACTGCAATGGCTCCAGATAACAGGCTCCTCTAACATCACCGTGTACAGGCTCCC
 GGAGCGTGTGGAGCTGGCACCCCTGCCTCCTTGGCAGCCGGTGGCCAGAACTTCACCCTGCGCTGCCAA
 GTGGAGGATGGTTCGCCCGGACCAGCCTCACGGTGGTGTGCTTCGCTGGGAGGAGGAGCTGAGCCGGC
 AGCCCGCAGTGGAGGAGCCAGCGGAGGTCACTGCCACTGTGCTGGCCAGCAGAGACGACCACGGAGCCCC
 TTTCTCATGCCGCACAGAACTGGACATGCAGCCCCAGGGGCTGGGACTGTTGCTGAACACCTCAGCCCC
 CGCCAGCTCCGAACCTTTGCTCCTGCCCGTGACCCCCCGCGCCTCGTGGCCCCCGGTTCTTGGAGGTGG
 AAACGTCGTGGCCGGTGGACTGCACCCTAGACGGGCTTTTTCCAGCCTCAGAGGCCAGGTTACCTGGC
 GCTGGGGGACCAGATGCTGAATGCGACAGTCAATGAACCACGGGGACACGCTAACGGCCACAGCCACAGCC
 ACGGCGCGCGCGGATCAGGAGGGTGCCTGGGAGATCGTCTGCAACGTGACCCCTAGGGGGCAGAGACGGG
 AGGCCCGGGAGAAGTTCACGGTCTTTAGCTTCTAGGACCCATTGTGAACCTCAGCGAGCCACCGCCCA
 TGAGGGGTCCACAGTACCGTGTGATGGCTGGGGCTCGAGTCCAGGTACGCTGGACGGAGTTCGG
 GCCCGGGCCCCGGGCAGCCAGCTCAACTCAGCTAAATGCTACCGAGAGTGACGACGGACGACGCTTCT
 TCTGCAGTGCCTCTCGAGGTGGACGGCGAGTCTTGCACAGGAACAGTACGCTCCAGTCCGAGTCCCT
 GTATGGTCCCAAATGACCGAGCCACATGCCCCAGCACTTGAATGGAAAGATAAAACGAGACACGTC
 CTGCAGTGCCAAGCCAGGGCAACCCGTACCCGAGCTGCGGTGTTTGAAGGAAGGCTCCAGCCGGGAGG
 TGCCGGTGGGATCCCCTTCTCGTCAACGTAACACATAATGGTACTTATCAGTGCCAAGCGTCCAGCTC
 ACGAGGCAATACACCCTGGTCTGGTGTGATGGACATTGAGGCTGGGAGCTCCACTTTGCCCCGTCTTC
 GTGGCGGTGTTACTGACCCTGGGCTGGTACTATCGTACTGGCCTTAATGTACGCTTTCAGGGAGCACC
 AACGGAGCGGCAGTTACCATGTTAGGGAGGAGACCTATCTGCCCTCAGTCTATGCAGCCGACAGA
 AGCAATGGGGGAAGAACCGTCCAGAGCTGAG

ACGCGTACGCGGCCGCTCGAGCAGAAACTCATCTCAGAAGAGGATCTGGCAGCAAATGATATCCTGGATT
 ACAAGGATGACGACGATAAGGTTTAA

Protein Sequence:

>RC208919 protein sequence
 Red=Cloning site Green=Tags(s)

MATMVPSVLWPRACWTLVCLLTPGVQGEFLLRVEPQNPVLSAGGSLFVNCSTDCPSSEKIALETSL
 KELVASGMGWAAFNL SNVTGNSRILCSVYCNGSQITGSSNITVYRLPERVELAPLPWPQVQNFILRCQ
 VEDGSPRTSLTVVLLRWEELSRQPAVEEPAEVTATVLSRDDHGAPFSCRTELDMPQGLGLFVNTSAP
 RQLRTFVLPVTPPRLVAPRFLEVETSWPVDCTLDGLFPASEAQVYLALGDQMLNATVMNHGDTLTATATA
 TARADQEGAREIVCNVTLGGERREARENLTVFSFLGPIVNLSEPTAHEGSTVTVSCMAGARVQVTLDGVP
 AAAPGQPAQLQLNATESDDGRSFFCSATLEVDGEFLHRNSSVQLRVL YGPKIDRATCPQHLKWKDKTRHV
 LQCQARGNPYELRCLKEGSSREVPVGI PFFVNVTHNGTYQCQASSSRGKYTLVVMDIEAGSSHFPVVF
 VAVLLTLGVVTIVLALMYVFREHQRSYHVREESTYLPLTSMQPTEAMGEEPSRAE

TRTRPLEQKLISEEDLAANDILDYKDDDDKV

Chromatograms:

https://cdn.origene.com/chromatograms/mk6147_e04.zip

Restriction Sites:

Sgfl-Mlul

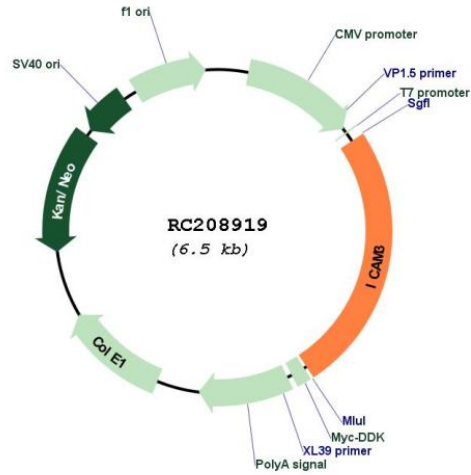
Cloning Scheme:

Cloning sites used for ORF Shutting:



* The last codon before the Stop codon of the ORF

Plasmid Map:

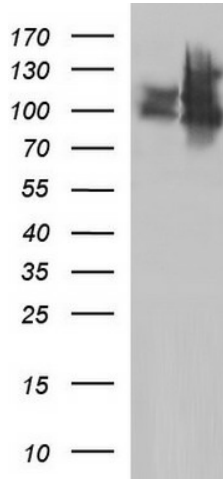


ACCN:

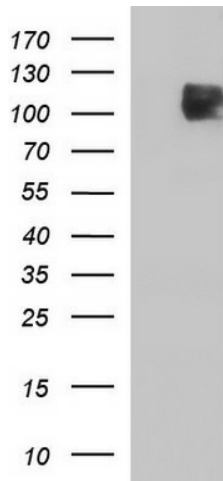
NM_002162

ORF Size:	1641 bp
OTI Disclaimer:	The molecular sequence of this clone aligns with the gene accession number as a point of reference only. However, individual transcript sequences of the same gene can differ through naturally occurring variations (e.g. polymorphisms), each with its own valid existence. This clone is substantially in agreement with the reference, but a complete review of all prevailing variants is recommended prior to use. More info
OTI Annotation:	This clone was engineered to express the complete ORF with an expression tag. Expression varies depending on the nature of the gene.
Components:	The ORF clone is ion-exchange column purified and shipped in a 2D barcoded Matrix tube containing 10ug of transfection-ready, dried plasmid DNA (reconstitute with 100 ul of water).
Reconstitution Method:	<ol style="list-style-type: none">1. Centrifuge at 5,000xg for 5min.2. Carefully open the tube and add 100ul of sterile water to dissolve the DNA.3. Close the tube and incubate for 10 minutes at room temperature.4. Briefly vortex the tube and then do a quick spin (less than 5000xg) to concentrate the liquid at the bottom.5. Store the suspended plasmid at -20°C. The DNA is stable for at least one year from date of shipping when stored at -20°C.
RefSeq:	NM_002162.5
RefSeq Size:	1796 bp
RefSeq ORF:	1644 bp
Locus ID:	3385
UniProt ID:	P32942
Cytogenetics:	19p13.2
Domains:	ig, IG, ICAM_N
Protein Families:	ES Cell Differentiation/IPS, Transmembrane
Protein Pathways:	Cell adhesion molecules (CAMs)
MW:	59.5 kDa
Gene Summary:	The protein encoded by this gene is a member of the intercellular adhesion molecule (ICAM) family. All ICAM proteins are type I transmembrane glycoproteins, contain 2-9 immunoglobulin-like C2-type domains, and bind to the leukocyte adhesion LFA-1 protein. This protein is constitutively and abundantly expressed by all leucocytes and may be the most important ligand for LFA-1 in the initiation of the immune response. It functions not only as an adhesion molecule, but also as a potent signalling molecule. Alternative splicing results in multiple transcript variants encoding different isoforms. [provided by RefSeq, Feb 2016]

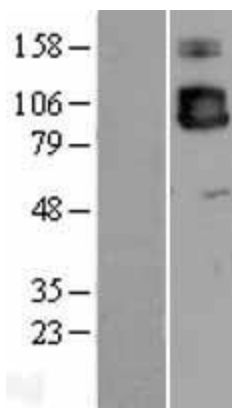
Product images:



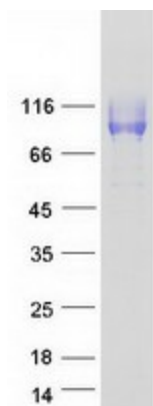
HEK293T cells were transfected with the pCMV6-ENTRY control (Cat# [PS100001], Left lane) or pCMV6-ENTRY ICAM3 (Cat# RC208919, Right lane) cDNA for 48 hrs and lysed. Equivalent amounts of cell lysates (5 ug per lane) were separated by SDS-PAGE and immunoblotted with anti-ICAM3(Cat# [TA507134]). Positive lysates [LY400788] (100ug) and [LC400788] (20ug) can be purchased separately from OriGene.



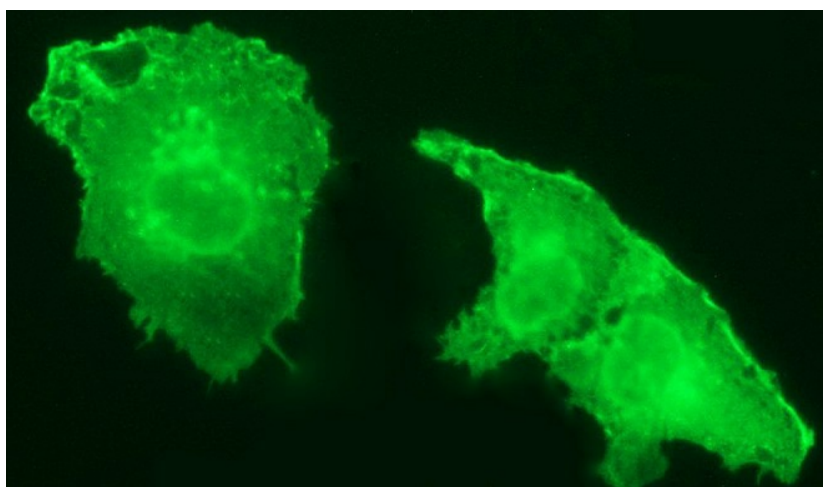
HEK293T cells were transfected with the pCMV6-ENTRY control (Left lane) or pCMV6-ENTRY ICAM3 (RC208919, Right lane) cDNA for 48 hrs and lysed. Equivalent amounts of cell lysates (5 ug per lane) were separated by SDS-PAGE and immunoblotted with anti-ICAM3 ([TA507174]). Positive lysates [LY400788] (100ug) and [LC400788] (20ug) can be purchased separately from OriGene.



Western blot validation of overexpression lysate (Cat# [LY400788]) using anti-DDK antibody (Cat# [TA50011-100]). Left: Cell lysates from untransfected HEK293T cells; Right: Cell lysates from HEK293T cells transfected with RC208919 using transfection reagent MegaTran 2.0 (Cat# [TT210002]).



Coomassie blue staining of purified ICAM3 protein (Cat# [TP308919]). The protein was produced from HEK293T cells transfected with ICAM3 cDNA clone (Cat# RC208919) using MegaTran 2.0 (Cat# [TT210002]).



Anti-ICAM3 mouse monoclonal antibody ([TA507174]) immunofluorescent staining of COS7 cells transiently transfected by pCMV6-ENTRY ICAM3 (RC208919).