

Product datasheet for **RC208915**

NR1D1 (NM_021724) Human Tagged ORF Clone

Product data:

Product Type:	Expression Plasmids
Product Name:	NR1D1 (NM_021724) Human Tagged ORF Clone
Tag:	Myc-DDK
Symbol:	NR1D1
Synonyms:	ear-1; EAR1; hRev; REVERBA; REVERBalpha; THRA1; THRAL
Mammalian Cell Selection:	Neomycin
Vector:	pCMV6-Entry (PS100001)
E. coli Selection:	Kanamycin (25 ug/mL)



[View online »](#)

ORF Nucleotide Sequence:

>RC208915 representing NM_021724
 Red=Cloning site Blue=ORF Green=Tags(s)

TTTTGTAATACGACTCACTATAGGGCGGCCGGAATTCGTCGACTGGATCCGGTACCGAGGAGATCTGCC
 GCC**CGCATCGCC**

ATGACGACCTGGACTCCAACAACAACACAGGTGGCGTCATCACCTACATTGGCTCCAGTGGCTCCTCCC
 CAAGCCGACCCAGCCCTGAATCCCTCTATAGTGACAACCTCAATGGCAGCTTCCAGTCCCTGACCCAAGG
 CTGTCCCACCTACTTCCACCATCCCCACTGGCTCCCTCACCCAAGACCCGGCTCGCTCCTTTGGGAGC
 ATTCCACCAGCCTGAGTGATGACGGCTCCCTTCTTCTCATCTTCTCGTCGTCATCCTCCTCCTCCT
 TCTATAATGGGAGCCCCCTGGGAGTCTACAAGTGGCCATGGAGGACAGCAGCCGAGTGTCCCCAGCAA
 GAGCACCAGCAACATACCAAGCTGAATGGCATGGTGTACTGTGTAAAGTGTGTGGGACGTTGCCTCG
 GGTTCCACTACGGTGTGCACGCCTGCGAGGGCTGCAAGGGCTTTTTCCGTGGGACATCCAGCAGAACA
 TCCAGTACAAAAGGTGTCTGAAGAATGAGAATTGCTCCATCGTCCGCATCAATCGCAACCCGTGCCAGCA
 ATGTCGTTCAAGAAGTGTCTCTGTGGGCATGTCTCGAGACGCTGTGCGTTTTGGGCGCATCCCCAAA
 CGAGAGAAGCAGCGGATGCTTGCTGAGATGCAGAGTGCCATGAACCTGGCCAACAACAGTTGAGCAGCC
 AGTGCCCGCTGGAGACTCACCCACCCAGCACCCACCCAGGCCCATGGGCCCTCGCCACCCCTGC
 TCCGGTCCCTCACCCCTGGTGGGCTTCTCCAGTTTCCACAACAGCTGACGCCTCCAGATCCCCAAGC
 CCTGAGCCACAGTGGAGGATGTGATATCCAGGTGGCCCGGGCCATCGAGAGATCTTACCTACGCCC
 ATGACAAGCTGGGACGCTCACCTGGCAACTTCAATGCCAACCATGCATCAGGTAGCCCTCCAGCCACCAC
 CCCACATCGTGGGAAAATCAGGGCTGCCACCTGCCCAATGACAACAACACCTTGGCTGCCAGCGT
 CATAACGAGGCCCTAAATGGTCTGCGCCAGGCTCCCTCCTCTACCCTCCCACCTGGCCTCCTGGCCCTG
 CACACCACAGCTGCCACCAGTCCAACAGCAACGGGACCCGTCTATGCCCAACCCACGTTGATGCCCCCT
 AGAAGGCAAGGCACCTGCCAACAGTCCCGGCAGGGCAACTCAAAGAATGTTCTGCTGGCATGTCCTATG
 AACATGTACCCGCATGGACGCAGTGGGCAACGGTGCAGGAGATCTGGGAGGATTCTCCATGAGCTTCA
 CGCCCGCTGTGCGGGAGGTGGTAGAGTTTGCCAAACACATCCCGGGCTTCCGTGACCTTTCTCAGCATGA
 CCAAGTACCCTGCTTAAGGCTGGCACCTTTGAGGTGCTGATGGTGCCTTTGCTTGGTTTCAACGTG
 AAGGACCAGACAGTGTGTTCTAAGCCGACCCACCTACAGCCTGCAGGAGCTTGGTGCCATGGGCATGG
 GAGACCTGCTCAGTGCCATGTTGACTTACGCGAGAAGCTCAACTCCCTGGCGTTACCGAGGAGGAGCT
 GGGCTCTTACCAGCGTGGTGTGTCTCTGCAGACCGCTCGGGCATGGAGAATTCGCTTCCGGTGGAG
 CAGCTCCAGGAGACGCTGCTGCGGGCTTCTCGGGCTCTGGTGTGAAGAACCAGCCCTTGGAGACTCCC
 GCTTACCAAGCTGCTGCTCAAGCTGCCGACCTGCGGACCTGAACAACATGCATTCCGAGAAGCTGCT
 GTCTTCCGGGTGGACGCCAG

ACGCGTACGCGGCCGCTCGAGCAGAACTCATCTCAGAAGAGGATCTGGCAGCAAATGATATCCTGGATT
 ACAAGGATGACGACGATAAGGTTTAA

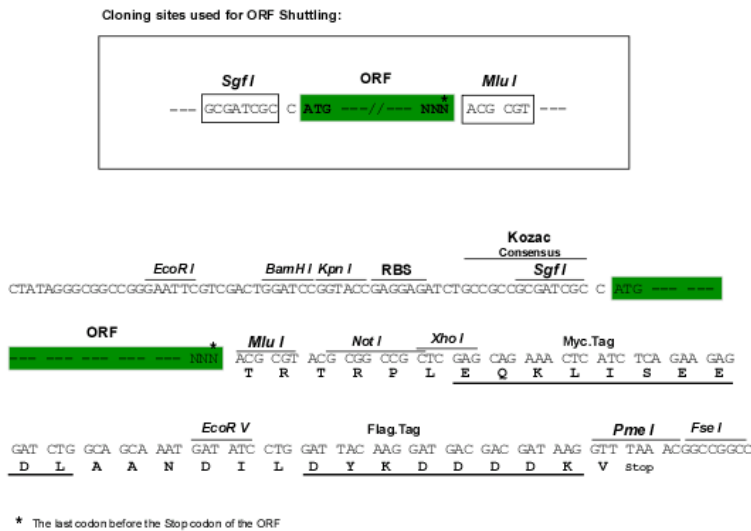
Protein Sequence:

>RC208915 representing NM_021724
 Red=Cloning site Green=Tags(s)

MTTLDNNTGGVITYIGSSGSSPRTSPESLYSDNSNGSFQSLTQGCPTYFPPSPTGSLTQDPARSFGS
 IPPSLSDDGSPSSSSSSSSSSSYNGSPPGSLQVAMEDSSRVSPSKSTSNITKLNMGVLLCKVCGDVAS
 GFHYGVHACEGCKGFFRRSIQQNIQYKRCLKNENCIVRINRNRCCQCRFKKCLSVGMSRDAVRFGRIPK
 REKQRLAEMQSAMNLANQLSSQCPLTSTPTQHPTPGPMGSPPPPAPVPSPLVGFVGFPPQQLTPPRS
 PEPTVEDVISQVARAHREIFTYAHDKLGSSPGNFNANHASGSPPATTPHRWENQCPPAPNDNNTLAAQR
 HNEALNGLRQAPSSYPPTWPPGPAHHSCHQSNSNGHRLCPTHVYAAPEGKAPANSRQGNKSNVLLACPM
 NMYPHGRSGRTVQEIWEDFSMSFTPAVREVVFAKHIPGFRDLSQHDQVTLKAGTFEVL MVRFASL FNV
 KDQVTVMFLSRTTYSLQELGAMGMGDLLSAMFDFSEKLNLSLALTEELGLFTAVVLVSADRS GMENSASVE
 QLQETLLRALRALVLRNRPLETSRFTKLLKLPDLRLNLMHSEKLLSFRVDAQ

TRTRPLEQKLI SEEDLAANDILDYKDDDDKV

Chromatograms: https://cdn.origene.com/chromatograms/mg3517_a06.zip
Restriction Sites: SgfI-MluI
Cloning Scheme:



ACCN: NM_021724
ORF Size: 1842 bp

OTI Disclaimer: The molecular sequence of this clone aligns with the gene accession number as a point of reference only. However, individual transcript sequences of the same gene can differ through naturally occurring variations (e.g. polymorphisms), each with its own valid existence. This clone is substantially in agreement with the reference, but a complete review of all prevailing variants is recommended prior to use. [More info](#)

OTI Annotation: This clone was engineered to express the complete ORF with an expression tag. Expression varies depending on the nature of the gene.

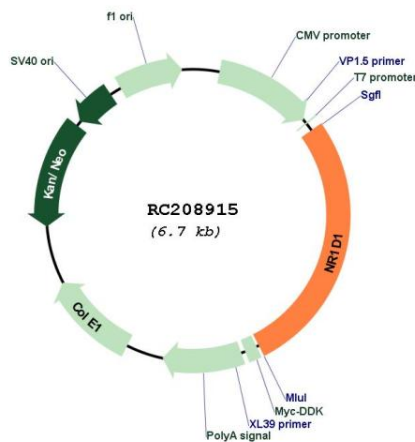
Components: The ORF clone is ion-exchange column purified and shipped in a 2D barcoded Matrix tube containing 10ug of transfection-ready, dried plasmid DNA (reconstitute with 100 ul of water).

- Reconstitution Method:**
 1. Centrifuge at 5,000xg for 5min.
 2. Carefully open the tube and add 100ul of sterile water to dissolve the DNA.
 3. Close the tube and incubate for 10 minutes at room temperature.
 4. Briefly vortex the tube and then do a quick spin (less than 5000xg) to concentrate the liquid at the bottom.
 5. Store the suspended plasmid at -20°C. The DNA is stable for at least one year from date of shipping when stored at -20°C.

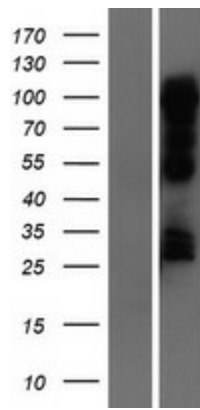
Note: Plasmids are not sterile. For experiments where strict sterility is required, filtration with 0.22um filter is required.

RefSeq: [NM_021724.5](#)
RefSeq Size: 2768 bp

RefSeq ORF:	1845 bp
Locus ID:	9572
UniProt ID:	P20393
Cytogenetics:	17q21.1
Domains:	HOLI, zf-C4
Protein Families:	Druggable Genome, Nuclear Hormone Receptor, Transcription Factors
Protein Pathways:	Circadian rhythm - mammal
MW:	66.6 kDa
Gene Summary:	This gene encodes a transcription factor that is a member of the nuclear receptor subfamily 1. The encoded protein is a ligand-sensitive transcription factor that negatively regulates the expression of core clock proteins. In particular this protein represses the circadian clock transcription factor aryl hydrocarbon receptor nuclear translocator-like protein 1 (ARNTL). This protein may also be involved in regulating genes that function in metabolic, inflammatory and cardiovascular processes. [provided by RefSeq, Jan 2013]

Product images:


Circular map for RC208915



Western blot validation of overexpression lysate (Cat# [LY411944]) using anti-DDK antibody (Cat# [TA50011-100]). Left: Cell lysates from untransfected HEK293T cells; Right: Cell lysates from HEK293T cells transfected with RC208915 using transfection reagent MegaTran 2.0 (Cat# [TT210002]).