

Product datasheet for **RC208910L3V**

RPL22 (NM_000983) Human Tagged ORF Clone Lentiviral Particle

Product data:

Product Type:	Lentiviral Particles
Product Name:	RPL22 (NM_000983) Human Tagged ORF Clone Lentiviral Particle
Symbol:	RPL22
Synonyms:	EAP; HBP15; HBP15/L22; L22
Mammalian Cell Selection:	Puromycin
Vector:	pLenti-C-Myc-DDK-P2A-Puro (PS100092)
Tag:	Myc-DDK
ACCN:	NM_000983
ORF Size:	384 bp
ORF Nucleotide Sequence:	The ORF insert of this clone is exactly the same as(RC208910).
OTI Disclaimer:	The molecular sequence of this clone aligns with the gene accession number as a point of reference only. However, individual transcript sequences of the same gene can differ through naturally occurring variations (e.g. polymorphisms), each with its own valid existence. This clone is substantially in agreement with the reference, but a complete review of all prevailing variants is recommended prior to use. More info
OTI Annotation:	This clone was engineered to express the complete ORF with an expression tag. Expression varies depending on the nature of the gene.
RefSeq:	NM_000983.3
RefSeq Size:	2099 bp
RefSeq ORF:	387 bp
Locus ID:	6146
UniProt ID:	P35268
Cytogenetics:	1p36.31
Domains:	Ribosomal_L22e
Protein Pathways:	Ribosome

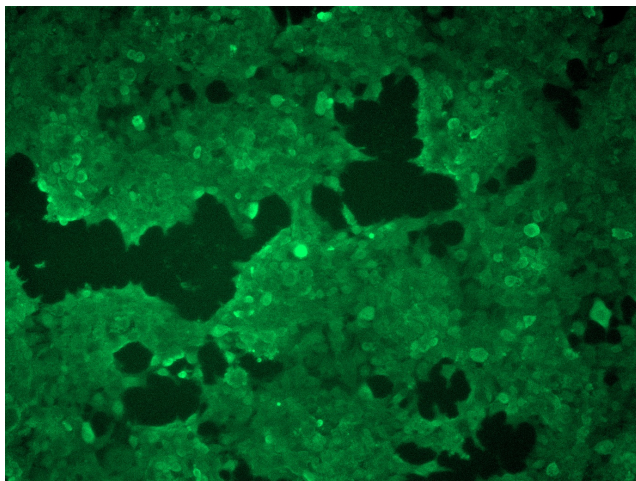


[View online »](#)

MW: 15.2 kDa

Gene Summary: Ribosomes, the organelles that catalyze protein synthesis, consist of a small 40S subunit and a large 60S subunit. Together these subunits are composed of 4 RNA species and approximately 80 structurally distinct proteins. This gene encodes a cytoplasmic ribosomal protein that is a component of the 60S subunit. The protein belongs to the L22E family of ribosomal proteins. Its initiating methionine residue is post-translationally removed. The protein can bind specifically to Epstein-Barr virus-encoded RNAs (EBERs) 1 and 2. The mouse protein has been shown to be capable of binding to heparin. Transcript variants utilizing alternative polyA signals exist. As is typical for genes encoding ribosomal proteins, there are multiple processed pseudogenes of this gene dispersed through the genome. It was previously thought that this gene mapped to 3q26 and that it was fused to the acute myeloid leukemia 1 (AML1) gene located at 21q22 in some therapy-related myelodysplastic syndrome patients with 3;21 translocations; however, these fusions actually involve a ribosomal protein L22 pseudogene located at 3q26, and this gene actually maps to 1p36.3-p36.2. [provided by RefSeq, Jul 2008]

Product images:



[RC208910L3] was used to prepare Lentiviral particles using [TR30037] packaging kit. HEK293T cells were transduced with RC208910L3V particle to overexpress human RPL22-Myc-DDK fusion protein.