

Product datasheet for **RC208902**

SYBL1 (VAMP7) (NM_005638) Human Tagged ORF Clone

Product data:

Product Type: Expression Plasmids
Product Name: SYBL1 (VAMP7) (NM_005638) Human Tagged ORF Clone
Tag: Myc-DDK
Symbol: SYBL1
Synonyms: SYBL1; TI-VAMP; TIVAMP; VAMP-7
Mammalian Cell Selection: Neomycin
Vector: pCMV6-Entry (PS100001)
E. coli Selection: Kanamycin (25 ug/mL)
ORF Nucleotide Sequence: >RC208902 representing NM_005638
Red=Cloning site Blue=ORF Green=Tags(s)

TTTTGTAATACGACTCACTATAGGGCGGCCGGAATTCGTCGACTGGATCCGGTACCGAGGAGATCTGCC
GCC**CGATCGCC**

ATGGCGATTCTTTTTGCTGTTGTTGCCAGGGGACCACTATCCTTGCCAAACATGCTTGGTGTGGAGGAA
ACTTCCTGGAGGTGACAGAGCAGATTCTGGCTAAGATACCTTCTGAAAATAACAACTAACGTAATCACA
TGGCAATTATTTGTTTCATTACATCTGCCAAGACAGGATTGTATATCTTTGTATCACTGATGATGATTTT
GAACGTTCCCGAGCCTTTAATTTCTGAATGAGATAAAGAAGAGGTTCCAGACTACTTACGGTTCAGAG
CACAGACAGCACTCCATATGCCATGAATAGCGAGTTCTCAAGTGTCTTAGCTGCACAGTGAAGCATCA
CTCTGAGAATAAGGGCCTAGACAAAGTATGGAGACTCAAGCCCAAGTGGATGAAGTGAAGGAATCATG
GTCAGAAACATAGATCTGGTAGCTCAGCGAGGAGAAAGATTGGAATTATTGATTGACAAAACAGAAAATC
TTGTGGATTCTTCTGTCACCTTCAAACTACCAGCAGAAATCTTGCTCGAGCCATGTGTATGAAGAACCT
CAAGCTCACTATTATCATCATCATCGTATCAATTGTGTTTCATCTATATCATTGTTTCACCTCTGTGGT
GGATTTACATGGCCAAGCTGTGTGAAGAAA

ACGCGTACGCGGCGCTCGAGCAGAACTCATCTCAGAAGAGGATCTGGCAGCAATGATATCCTGGATT
ACAAGGATGACGACGATAAGGTTTAA



[View online »](#)

Protein Sequence: >RC208902 representing NM_005638
Red=Cloning site Green=Tags(s)

MAILFAVVARGTTILAKHAWCGGNFLEVTEQILAKIPSENNKLYSHGNLYFHYICQDRIVYLCITDDDF
 ERSRAFNLNEIKKRFQTTYGSRAQTALPYAMNSEFSSVLAQLKHSENKGLDKVMETQAQVDELKGM
 VRNIDLVAQRGERLELLIDKTENLVSSVTFKTSRNLARAMCMKNLKLIIIIIVSIVFYIIIVSPLCG
 GFTWPSCVKK

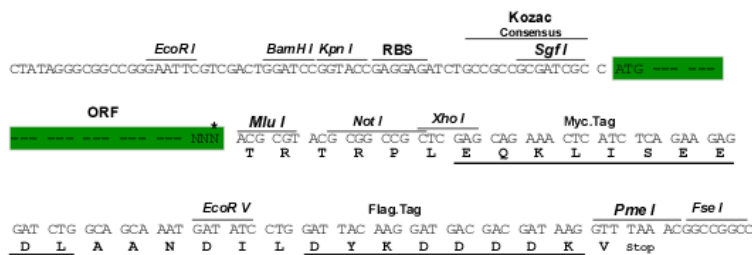
TRTRPLEQKLISEEDLAANDILDYKDDDDKV

Restriction Sites:

Sgfl-MluI

Cloning Scheme:

Cloning sites used for ORF Shuttling:



* The last codon before the Stop codon of the ORF

ACCN: NM_005638

ORF Size: 660 bp

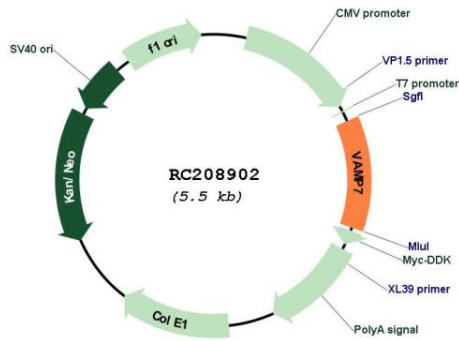
OTI Disclaimer: Due to the inherent nature of this plasmid, standard methods to replicate additional amounts of DNA in E. coli are highly likely to result in mutations and/or rearrangements. Therefore, OriGene does not guarantee the capability to replicate this plasmid DNA. Additional amounts of DNA can be purchased from OriGene with batch-specific, full-sequence verification at a reduced cost. Please contact our customer care team at custsupport@origene.com or by calling 301.340.3188 option 3 for pricing and delivery.

The molecular sequence of this clone aligns with the gene accession number as a point of reference only. However, individual transcript sequences of the same gene can differ through naturally occurring variations (e.g. polymorphisms), each with its own valid existence. This clone is substantially in agreement with the reference, but a complete review of all prevailing variants is recommended prior to use. [More info](#)

OTI Annotation: This clone was engineered to express the complete ORF with an expression tag. Expression varies depending on the nature of the gene.

Components:	The ORF clone is ion-exchange column purified and shipped in a 2D barcoded Matrix tube containing 10ug of transfection-ready, dried plasmid DNA (reconstitute with 100 ul of water).
Reconstitution Method:	<ol style="list-style-type: none"> 1. Centrifuge at 5,000xg for 5min. 2. Carefully open the tube and add 100ul of sterile water to dissolve the DNA. 3. Close the tube and incubate for 10 minutes at room temperature. 4. Briefly vortex the tube and then do a quick spin (less than 5000xg) to concentrate the liquid at the bottom. 5. Store the suspended plasmid at -20°C. The DNA is stable for at least one year from date of shipping when stored at -20°C.
RefSeq:	<u>NM_005638.6</u>
RefSeq Size:	2588 bp
RefSeq ORF:	663 bp
Locus ID:	6845
UniProt ID:	<u>P51809</u>
Cytogenetics:	Xq28 and Yq12
Domains:	synaptobrevin
Protein Families:	Transcription Factors, Transmembrane
Protein Pathways:	SNARE interactions in vesicular transport
MW:	24.8 kDa
Gene Summary:	This gene encodes a transmembrane protein that is a member of the soluble N-ethylmaleimide-sensitive factor attachment protein receptor (SNARE) family. The encoded protein localizes to late endosomes and lysosomes and is involved in the fusion of transport vesicles to their target membranes. Alternate splicing results in multiple transcript variants. [provided by RefSeq, Jun 2010]

Product images:



Circular map for RC208902