

Product datasheet for RC208890

SPATA19 (NM_174927) Human Tagged ORF Clone

Product data:

Product Type: Expression Plasmids
Product Name: SPATA19 (NM_174927) Human Tagged ORF Clone
Tag: Myc-DDK
Symbol: SPATA19
Synonyms: CT132; SPAS1; spergen1
Mammalian Cell Selection: Neomycin
Vector: pCMV6-Entry (PS100001)
E. coli Selection: Kanamycin (25 ug/mL)
ORF Nucleotide Sequence: >RC208890 representing NM_174927
 Red=Cloning site Blue=ORF Green=Tags(s)

TTTTGTAATACGACTCACTATAGGGCGCCGGGAATTCGTCGACTGGATCCGGTACCGAGGAGATCTGCC
 GCC**CGGATCGCC**

ATGATAATTACGACATGGATTGTGTATATTCTTGCTCGGAAAGGTGTAGGGCTTCCCTTCTACCAATAA
 CCGATTCCGACATTGACGTTGTGGAAAGTGAGGCTGTGTCTGTACTACATCATTGGTTGAAAAAACAGA
 AGAAGAGGCTTCTCGGGCATAAAGGAAAAGCTGCCATCAACCACCCTCCAGGGTGAAGGGAGAAG
 ATGTCCACTGACTCCCCTCCCACCCATGGCCAGGACATCCACGTGACCAGAGATGTGGTGAAGCACCACC
 TCTCTAAGTCTGATTTGTGGCAAACCAGAGCCAAGAGGTCCTAGAGGAGAGAACACGAATCCAGTTCAT
 AAGATGGAGCCACACTCGTATCTTCCAAGTGCCAAGTGAGATGACAGAGGACATCATGCGAGATCGAATA
 GAGCAGGTGAGACGAAGCATATCCCGTCTTACAGATGTCTCAGCTCAGGACTTCAGTATGAGACCCTCT
 CCTCAGACTGC

ACGCGTACGCGGCCGCTCGAGCAGAACTCATCTCAGAAGAGGATCTGGCAGCAATGATATCCTGGATT
 ACAAGGATGACGACGATAAGGTTTAA

Protein Sequence: >RC208890 representing NM_174927
 Red=Cloning site Green=Tags(s)

MIITTWIVYILARKGVLPFLPITSSDIDVVESEAVSVLHHWLKTEEEASRGIKEKLSINHP SQGVREK
 MSTDSPPTHGQDIHVTRDVVKHHLKSKDLLANQSQEVLEERTRIQFIRWSHTRIFQVPSEMEDIMRDRI
 EQVRRSISRLTDVSAQDFSMRPSSDC

TRTRPLEQKLISEEDLAANDILDYKDDDDKV

Chromatograms: https://cdn.origene.com/chromatograms/ja1449_e07.zip



[View online »](#)

Restriction Sites: SgfI-MluI

Cloning Scheme:



ACCN: NM_174927

ORF Size: 504 bp

OTI Disclaimer: The molecular sequence of this clone aligns with the gene accession number as a point of reference only. However, individual transcript sequences of the same gene can differ through naturally occurring variations (e.g. polymorphisms), each with its own valid existence. This clone is substantially in agreement with the reference, but a complete review of all prevailing variants is recommended prior to use. [More info](#)

OTI Annotation: This clone was engineered to express the complete ORF with an expression tag. Expression varies depending on the nature of the gene.

Components: The ORF clone is ion-exchange column purified and shipped in a 2D barcoded Matrix tube containing 10ug of transfection-ready, dried plasmid DNA (reconstitute with 100 ul of water).

Reconstitution Method:

1. Centrifuge at 5,000xg for 5min.
2. Carefully open the tube and add 100ul of sterile water to dissolve the DNA.
3. Close the tube and incubate for 10 minutes at room temperature.
4. Briefly vortex the tube and then do a quick spin (less than 5000xg) to concentrate the liquid at the bottom.
5. Store the suspended plasmid at -20°C. The DNA is stable for at least one year from date of shipping when stored at -20°C.

RefSeq: [NM_174927.3](#)

RefSeq Size: 866 bp

RefSeq ORF: 504 bp

Locus ID: 219938

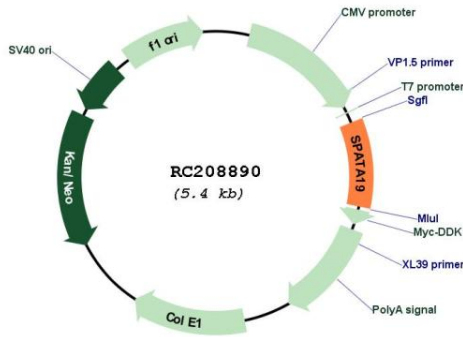
UniProt ID: [Q7Z5L4](#)

Cytogenetics: 11q25

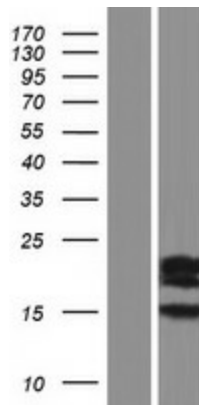
MW: 19 kDa

Gene Summary: May have a role in spermiogenesis.[UniProtKB/Swiss-Prot Function]

Product images:



Circular map for RC208890



Western blot validation of overexpression lysate (Cat# [LY406408]) using anti-DDK antibody (Cat# [TA50011-100]). Left: Cell lysates from untransfected HEK293T cells; Right: Cell lysates from HEK293T cells transfected with RC208890 using transfection reagent MegaTran 2.0 (Cat# [TT210002]).