

Product datasheet for RC208887

KRTCAP2 (NM_173852) Human Tagged ORF Clone

Product data:

Product Type:	Expression Plasmids
Product Name:	KRTCAP2 (NM_173852) Human Tagged ORF Clone
Tag:	Myc-DDK
Symbol:	KRTCAP2
Synonyms:	KCP2
Mammalian Cell Selection:	Neomycin
Vector:	pCMV6-Entry (PS100001)
E. coli Selection:	Kanamycin (25 ug/mL)
ORF Nucleotide Sequence:	>RC208887 representing NM_173852 Red=Cloning site Blue=ORF Green=Tags(s)

TTTTGTAATACGACTCACTATAGGGCGGCCGGAATTCGTCGACTGGATCCGGTACCGAGGAGATCTGCC
GCC**CGATCGC**

ATGCGCATAGCTAACCGCACCCGGTTCAGCTCGCCTTTCTTGCCAGAGGCGCCGGTTGGACTCACGGGC
GGGGCATGATGGTGGTGGGTACGGGCACCTCGCTGGCGCTCTCCTCCCTCTGTCCTGCTCTTTGC
TGGGATGCAGATGTACAGCCGTAGCTGGCCTCCACCGAGTGGCTCACCATCCAGGGCGGCTGCTTGGT
TCGGGTCTCTCGTGTTCGCTCACTGCCTTCAATAATCTGGAGAATCTGTCTTTGGCAAAGGATTCC
AAGCAAAGATCTCCCTGAGATTCTCCTGTGCCTCCTGTTGGCTCTCTTGCATCTGGCCTCATCCACCG
AGTCTGTGTACCACTGCTTCATCTTCCATGGTGGTCTGTACTACATCAACAAGATCTCCTCCACC
CTGTACCAGGCAGCAGCTCCAGTCTCACACCAGCCAAGGTCACAGGCAAGAGCAAGAAGAGAAAC

ACGCGTACGCGGCCGCTCGAGCAGAACTCATCTCAGAAGAGGATCTGGCAGCAAATGATATCCTGGATT
ACAAGGATGACGACGATAAGGTTTAA

Protein Sequence:	>RC208887 representing NM_173852 Red=Cloning site Green=Tags(s)
-------------------	--

MRIANRTRFSSPFLARGAGWTHGRGMMVVGTSLSLSSLLSLLLFAGMQMYSRQLASTEWLTIQGGLLG
SGLFVFSLTAFNNLENLVFGKGFQAKIFPEILLCLLLALFASGLIHRVCVTCFIFSMVGLYYINKISST
LYQAAAPVLTAKVTGKSKRN

TRTRPLEQKLISEEDLAANDILDYKDDDDKV

Chromatograms:	https://cdn.origene.com/chromatograms/mg4162_b05.zip
----------------	---


[View online »](#)

Restriction Sites: SgfI-MluI

Cloning Scheme:



ACCN: NM_173852

ORF Size: 486 bp

OTI Disclaimer: The molecular sequence of this clone aligns with the gene accession number as a point of reference only. However, individual transcript sequences of the same gene can differ through naturally occurring variations (e.g. polymorphisms), each with its own valid existence. This clone is substantially in agreement with the reference, but a complete review of all prevailing variants is recommended prior to use. [More info](#)

OTI Annotation: This clone was engineered to express the complete ORF with an expression tag. Expression varies depending on the nature of the gene.

Components: The ORF clone is ion-exchange column purified and shipped in a 2D barcoded Matrix tube containing 10ug of transfection-ready, dried plasmid DNA (reconstitute with 100 ul of water).

Reconstitution Method:

1. Centrifuge at 5,000xg for 5min.
2. Carefully open the tube and add 100ul of sterile water to dissolve the DNA.
3. Close the tube and incubate for 10 minutes at room temperature.
4. Briefly vortex the tube and then do a quick spin (less than 5000xg) to concentrate the liquid at the bottom.
5. Store the suspended plasmid at -20°C. The DNA is stable for at least one year from date of shipping when stored at -20°C.

Note: Plasmids are not sterile. For experiments where strict sterility is required, filtration with 0.22um filter is required.

RefSeq: [NM_173852.3](#), [NP_776251.1](#)

RefSeq Size: 577 bp

RefSeq ORF: 411 bp

Locus ID: 200185

UniProt ID: [Q8N6L1](#)

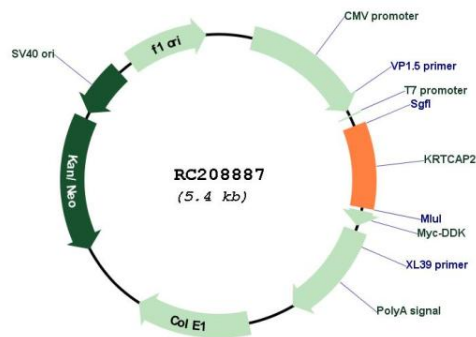
Cytogenetics: 1q22

Protein Families: Transmembrane

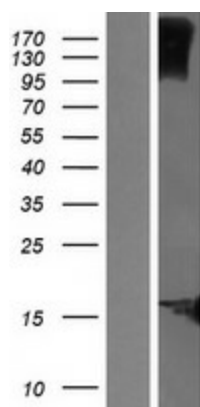
MW: 17.4 kDa

Gene Summary: Subunit of the oligosaccharyl transferase (OST) complex that catalyzes the initial transfer of a defined glycan (Glc(3)Man(9)GlcNAc(2) in eukaryotes) from the lipid carrier dolichol-pyrophosphate to an asparagine residue within an Asn-X-Ser/Thr consensus motif in nascent polypeptide chains, the first step in protein N-glycosylation. N-glycosylation occurs cotranslationally and the complex associates with the Sec61 complex at the channel-forming translocon complex that mediates protein translocation across the endoplasmic reticulum (ER). All subunits are required for a maximal enzyme activity (PubMed:22467853). May be involved in N-glycosylation of APP (amyloid-beta precursor protein). Can modulate gamma-secretase cleavage of APP by enhancing endoproteolysis of PSEN1 (PubMed:21768116). [UniProtKB/Swiss-Prot Function]

Product images:



Circular map for RC208887



Western blot validation of overexpression lysate (Cat# [LY406321]) using anti-DDK antibody (Cat# [TA50011-100]). Left: Cell lysates from untransfected HEK293T cells; Right: Cell lysates from HEK293T cells transfected with RC208887 using transfection reagent MegaTran 2.0 (Cat# [TT210002]).