

Product datasheet for **RC208882**

ZMAT2 (NM_144723) Human Tagged ORF Clone

Product data:

Product Type: Expression Plasmids
Product Name: ZMAT2 (NM_144723) Human Tagged ORF Clone
Tag: Myc-DDK
Symbol: ZMAT2
Synonyms: Ptg-12; Snu23
Mammalian Cell Selection: Neomycin
Vector: pCMV6-Entry (PS100001)
E. coli Selection: Kanamycin (25 ug/mL)
ORF Nucleotide Sequence: >RC208882 ORF sequence
Red=Cloning site Blue=ORF Green=Tags(s)

TTTTGTAATACGACTCACTATAGGGCGGCCGGAATTCGTCGACTGGATCCGGTACCGAGGAGATCTGCC
GCC**CGATCGCC**

ATGGCGTCGGGCAGCGGGACAAAACTTGGACTTTCGCCGAAAGTGGGACAAAGATGAATATGAGAAAC
TCGCCGAGAAGAGGCTCACGGAAGAGAGAGAAAAGAAAGATGGAAAACCAGTGCAGCCTGTCAAGCGAGA
GCTTTTACGGCATAGGGACTACAAGGTGGACTTGAATCCAAGCTTGGGAAGACAATTGTCATTACCAAG
ACAACCCCTCAATCTGAGATGGGAGGATATTACTGCAATGTCTGTGACTGTGTGGTGAAGGACTCCATCA
ACTTTCTGGATCACATTAATGGAAGAAACATCAGAGAAACCTGGGCATGTCTATGCGTGTGGAACGTTT
CACCCCTGGATCAGGTGAAGAAACGTTTTGAGGTCAACAAGAAGAAGATGGAAGAGAAGCAGAAGGATTAT
GATTTTGAAGAAAGGATGAAGGAGCTCAGAGAAGAGGAGAAAAGGCCAAAGCGTACAAGAAAGAGAAAC
AGAAGGAGAAGAAAGGAGGGCTGAGGAGGACTTGACATTTGAGGAGGACGATGAGATGGCAGCTGTGAT
GGGCTTCTGGCTTTGGTTCCACCAAGAAGAGTTAC

ACGCGTACGCGGCCGCTCGAGCAGAACTCATCTCAGAAGAGGATCTGGCAGCAAATGATATCCTGGATT
ACAAGGATGACGACGATAAGGTTTAA

Protein Sequence: >RC208882 protein sequence
Red=Cloning site Green=Tags(s)

MASGSGTKNLDFRRKWDKDEYEKLAEKRLTEEREKDKGKPVQPKRELLRHRDYKVDLESKLGKTIKITK
TTPQSEMGGYYCNVDCVVKDSINFLDHINGKQHQRNLGMSMRVERSTLDQVKKRFEVNNKKMEEKQKDY
DFEERMKELREEEKAKAYKKEKQKEKRRRAEEDLTFEEDDEMAAVMGFSGFGSTKKS

TRTRPLEQKLISEEDLAANDILDYKDDDDKV



Chromatograms: https://cdn.origene.com/chromatograms/mk6778_a04.zip

Restriction Sites: SgfI-MluI

Cloning Scheme:



ACCN: NM_144723

ORF Size: 597 bp

OTI Disclaimer: The molecular sequence of this clone aligns with the gene accession number as a point of reference only. However, individual transcript sequences of the same gene can differ through naturally occurring variations (e.g. polymorphisms), each with its own valid existence. This clone is substantially in agreement with the reference, but a complete review of all prevailing variants is recommended prior to use. [More info](#)

OTI Annotation: This clone was engineered to express the complete ORF with an expression tag. Expression varies depending on the nature of the gene.

Components: The ORF clone is ion-exchange column purified and shipped in a 2D barcoded Matrix tube containing 10ug of transfection-ready, dried plasmid DNA (reconstitute with 100 ul of water).

Reconstitution Method:

1. Centrifuge at 5,000xg for 5min.
2. Carefully open the tube and add 100ul of sterile water to dissolve the DNA.
3. Close the tube and incubate for 10 minutes at room temperature.
4. Briefly vortex the tube and then do a quick spin (less than 5000xg) to concentrate the liquid at the bottom.
5. Store the suspended plasmid at -20°C. The DNA is stable for at least one year from date of shipping when stored at -20°C.

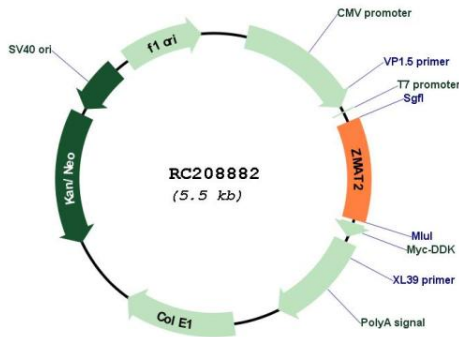
RefSeq: [NM_144723.3](#)

RefSeq Size: 1512 bp

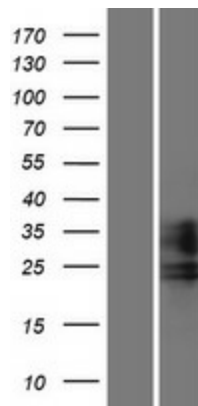
RefSeq ORF: 600 bp

Locus ID: 153527

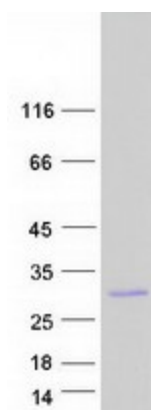
UniProt ID: [Q96NC0](#)
Cytogenetics: 5q31.3
Protein Pathways: Spliceosome
MW: 23.6 kDa
Gene Summary: Involved in pre-mRNA splicing as a component of the spliceosome.[UniProtKB/Swiss-Prot Function]

Product images:


Circular map for RC208882



Western blot validation of overexpression lysate (Cat# [LY408151]) using anti-DDK antibody (Cat# [TA50011-100]). Left: Cell lysates from untransfected HEK293T cells; Right: Cell lysates from HEK293T cells transfected with RC208882 using transfection reagent MegaTran 2.0 (Cat# [TT210002]).



Coomassie blue staining of purified ZMAT2 protein (Cat# [TP308882]). The protein was produced from HEK293T cells transfected with ZMAT2 cDNA clone (Cat# RC208882) using MegaTran 2.0 (Cat# [TT210002]).