

Product datasheet for **RC208880**

FT1A (FUT6) (NM_000150) Human Tagged ORF Clone

Product data:

Product Type:	Expression Plasmids
Product Name:	FT1A (FUT6) (NM_000150) Human Tagged ORF Clone
Tag:	Myc-DDK
Symbol:	FT1A
Synonyms:	FCT3A; FT1A; Fuc-TVI; FucT-VI
Mammalian Cell Selection:	Neomycin
Vector:	pCMV6-Entry (PS100001)
E. coli Selection:	Kanamycin (25 ug/mL)
ORF Nucleotide Sequence:	>RC208880 ORF sequence Red=Cloning site Blue=ORF Green=Tags(s)

TTTTGTAATACGACTCACTATAGGGCGCCGGGAATTCGTCGACTGGATCCGGTACCGAGGAGATCTGCC
GCC**CGATCGCC**

ATGGATCCCTGGGCCCGCCAAGCCACAGTGGTCGTGGCGTGCTGTCTGACCACGCTGCTGTTTCACC
TGCTGATGGCTGTGTGTTTCTTCTCCTATCTGCGTGTGTCTCAAGACGATCCCACTGTGTACCCTAATGG
GTCCCGCTTCCCAGACAGCACAGGGACCCCGCCCACTCCATCCCCTGATCCTGCTGTGGACGTGGCCT
TTTAAACAACCCATAGCTCTGCCCGCTGCTCAGAGATGGTGCCTGGCACGGCTGACTGCAACATCACTG
CCGACCGCAAGGTGTATCCACAGGCAGACGCGGTATCGTGCACCACCGAGAGGTATGTACAACCCAG
TGCCAGCTCCCAGCTCCTCGAGGCGGCAGGGGACGATGGATCTGGTTCAGCATGGAGTCCCAAGC
CACTGCTGGCAGCTGAAAGCCATGGACGGATACTTCAATCTCACCATGTCTACCGCAGCGACTCCGACA
TCTTACGCCCTACGGCTGGCTGGAGCCGTGGTCCGGCCAGCCTGCCACCCACCGCTCAACCTCTCGGC
CAAGACCGAGCTGGTGGCTGGGAGTGTCCAAGTGGGGCCAACTCCGCCAGGGTGGCTACTACCGAG
AGCCTGCAGGCCATCTCAAGGTGGACGTGTACGGACGCTCCACAAGCCCTGCCAGGGAACCATGA
TGGAGACGCTGTCCCGTACAAGTTCTATCTGGCCTTCAAGAATCCTTGACCCCGACTACATCACCGA
GAAGCTGTGGAGGAACGCCCTGGAGGCTGGCCGTGCCCGTGGTGTGGCCCCAGCAGAAGCAACTAC
GAGAGTTCTGCCGCCGACGCCTTATCCACGTGGACGACTTCCAGAGCCCAAGGACCTGGCCCGGT
ACCTGCAGGAGCTGGACAAGGACCAGCCCGCTACCTGAGTACTTTGCTGGCGGAGACGCTGCGGCC
TCGCTCCTTACGCTGGGCACTCGTTTTCTGCAAGGCTGCTGGAAACTGCAGGAGGAATCCAGGTACCAG
ACACGCGCATAGCGCTTGGTTACCC

ACGGTACGCGGCCGCTCGAGCAGAACTCATCTCAGAAGAGGATCTGGCAGCAATGATATCCTGGATT
ACAAGGATGACGACGATAAGGTTAA



[View online »](#)

Protein Sequence: >RC208880 protein sequence
Red=Cloning site Green=Tags(s)

MDPLGPAKPQWSWRCLTLLFHLLMAVCFSSYLKRVSDPTVYPNGSRFPDSTGTPAHSIPLILLWTWP
 FNKPIALPRCSEMVPGTADCNITADRKVYPOADAVIVHHREVMYNPSAQLPRSSRRQGQRWIWFSMESPS
 HCWQLKAMDGYFNLMTSYRSDSDIFTPYGWLEPWGQPAHPPLNLSAKTELVAWAVSNWGPNSARVRYQ
 SLQAHLKVDVYGRSHKPLPQGTMMETLSRYKFYLAFKNSLHPDYITEKLWRNALEAWAVPVVLGPSRSNY
 ERFLPPDAFIHVDDFQSPKDLARYLQELDKDHARYLSYFRWRETLRPRFSWALAFCKACWKLQEESRYQ
 TRGIAAWFT

TRTRPLEQKLISEEDLAANDILDYKDDDDKV

Chromatograms: https://cdn.origene.com/chromatograms/mk6550_b12.zip

Restriction Sites: SgfI-MluI

Cloning Scheme:



* The last codon before the Stop codon of the ORF

ACCN: NM_000150

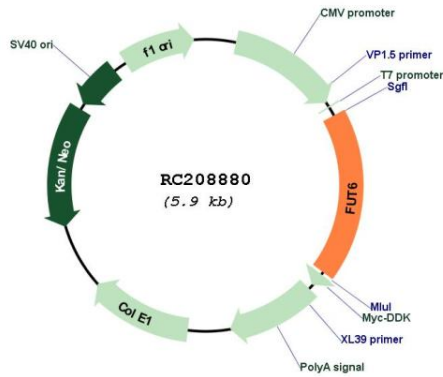
ORF Size: 1077 bp

OTI Disclaimer: Due to the inherent nature of this plasmid, standard methods to replicate additional amounts of DNA in E. coli are highly likely to result in mutations and/or rearrangements. Therefore, OriGene does not guarantee the capability to replicate this plasmid DNA. Additional amounts of DNA can be purchased from OriGene with batch-specific, full-sequence verification at a reduced cost. Please contact our customer care team at custsupport@origene.com or by calling 301.340.3188 option 3 for pricing and delivery.

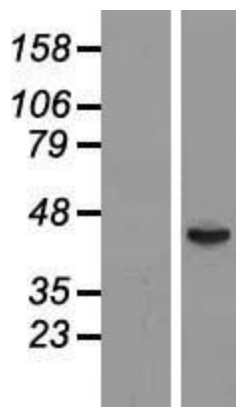
The molecular sequence of this clone aligns with the gene accession number as a point of reference only. However, individual transcript sequences of the same gene can differ through naturally occurring variations (e.g. polymorphisms), each with its own valid existence. This clone is substantially in agreement with the reference, but a complete review of all prevailing variants is recommended prior to use. [More info](#)

OTI Annotation:	This clone was engineered to express the complete ORF with an expression tag. Expression varies depending on the nature of the gene.
Components:	The ORF clone is ion-exchange column purified and shipped in a 2D barcoded Matrix tube containing 10ug of transfection-ready, dried plasmid DNA (reconstitute with 100 ul of water).
Reconstitution Method:	<ol style="list-style-type: none">1. Centrifuge at 5,000xg for 5min.2. Carefully open the tube and add 100ul of sterile water to dissolve the DNA.3. Close the tube and incubate for 10 minutes at room temperature.4. Briefly vortex the tube and then do a quick spin (less than 5000xg) to concentrate the liquid at the bottom.5. Store the suspended plasmid at -20°C. The DNA is stable for at least one year from date of shipping when stored at -20°C.
RefSeq:	NM_000150.3
RefSeq Size:	3137 bp
RefSeq ORF:	1080 bp
Locus ID:	2528
UniProt ID:	P51993
Cytogenetics:	19p13.3
Domains:	Glyco_transf_10
Protein Pathways:	Glycosphingolipid biosynthesis - lacto and neolacto series, Metabolic pathways
MW:	41.9 kDa
Gene Summary:	The protein encoded by this gene is a Golgi stack membrane protein that is involved in the creation of sialyl-Lewis X, an E-selectin ligand. Mutations in this gene are a cause of fucosyltransferase-6 deficiency. Two transcript variants encoding the same protein have been found for this gene. [provided by RefSeq, Jul 2008]

Product images:



Circular map for RC208880



Western blot validation of overexpression lysate (Cat# [LY420745]) using anti-DDK antibody (Cat# [TA50011-100]). Left: Cell lysates from untransfected HEK293T cells; Right: Cell lysates from HEK293T cells transfected with [RC220969] using transfection reagent MegaTran 2.0 (Cat# [TT210002]).