

## Product datasheet for RC208878

### LEPROT (NM\_017526) Human Tagged ORF Clone

#### Product data:

**Product Type:** Expression Plasmids  
**Product Name:** LEPROT (NM\_017526) Human Tagged ORF Clone  
**Tag:** Myc-DDK  
**Symbol:** LEPROT  
**Synonyms:** LEPR; OB-RGRP; OBRGRP; VPS55  
**Mammalian Cell Selection:** Neomycin  
**Vector:** pCMV6-Entry (PS100001)  
**E. coli Selection:** Kanamycin (25 ug/mL)  
**ORF Nucleotide Sequence:** >RC208878 ORF sequence  
 Red=Cloning site Blue=ORF Green=Tags(s)

TTTTGTAATACGACTCACTATAGGGCGCCGGAATTCGTCGACTGGATCCGGTACCGAGGAGATCTGCC  
 GCCCGCATCGCC

ATGGCGGGCGTTAAAGCTCTCGTGGCATTATCCTTCAGTGGGCTATTGGACTGACTTTTCTTATGCTGG  
 GATGTGCCTTAGAGGATTATGGCGTTTACTGGCCCTTATTCGTCCTGATTTCCACGCCATCTCCCCAT  
 CCCCCATTTTCATTGCCAAAAGAGTCACCTATGACTCAGATGCAACCAGTAGTGCCTGTGGGAAGTGGCA  
 TATTTCTTCACTACTGGAATTGTTGTTTCTGCCTTGGATTTCTGTTATTCTTGCTCGTGTGGCTGTGA  
 TCAAATGGGGAGCCTGCGCCTTGTGTTGGCAGGCAATGCAGTCATTTTCCTTACAATTCAGGGTTTTT  
 CCTTATATTTGGAAGAGGAGATGATTTTAGCTGGGAGCAGTGG

ACGCGTACGCGGCCGCTCGAGCAGAACTCATCTCAGAAGAGGATCTGGCAGCAAATGATATCCTGGATT  
 ACAAGGATGACGACGATAAGGTTTAA

**Protein Sequence:** >RC208878 protein sequence  
 Red=Cloning site Green=Tags(s)

MAGVKALVALSFGAIGLTFMLGCALEDYGVYWPLFVLIFHAI S P I P H F I A K R V T Y D S D A T S S A C R E L A  
 Y F F T T G I V V S A F G F P V I L A R V A I K W G A C G L V L A G N A V I F L T I Q G F F L I F G R G D D F S W E Q W

TRTRPLEQKLISEEDLAANDILDYKDDDDKV

**Chromatograms:** [https://cdn.origene.com/chromatograms/mk6035\\_a09.zip](https://cdn.origene.com/chromatograms/mk6035_a09.zip)

**Restriction Sites:** SgfI-MluI



[View online »](#)

**Cloning Scheme:**


**ACCN:** NM\_017526

**ORF Size:** 393 bp

**OTI Disclaimer:** The molecular sequence of this clone aligns with the gene accession number as a point of reference only. However, individual transcript sequences of the same gene can differ through naturally occurring variations (e.g. polymorphisms), each with its own valid existence. This clone is substantially in agreement with the reference, but a complete review of all prevailing variants is recommended prior to use. [More info](#)

**OTI Annotation:** This clone was engineered to express the complete ORF with an expression tag. Expression varies depending on the nature of the gene.

**Components:** The ORF clone is ion-exchange column purified and shipped in a 2D barcoded Matrix tube containing 10ug of transfection-ready, dried plasmid DNA (reconstitute with 100 ul of water).

- Reconstitution Method:**
1. Centrifuge at 5,000xg for 5min.
  2. Carefully open the tube and add 100ul of sterile water to dissolve the DNA.
  3. Close the tube and incubate for 10 minutes at room temperature.
  4. Briefly vortex the tube and then do a quick spin (less than 5000xg) to concentrate the liquid at the bottom.
  5. Store the suspended plasmid at -20°C. The DNA is stable for at least one year from date of shipping when stored at -20°C.

**RefSeq:** [NM\\_017526.5](#)

**RefSeq Size:** 4777 bp

**RefSeq ORF:** 396 bp

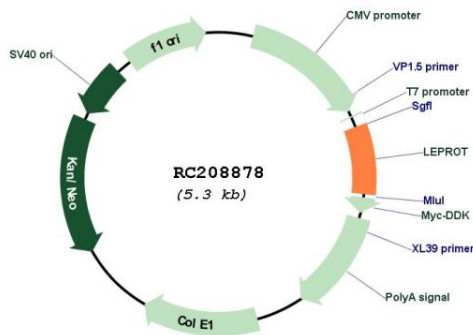
**Locus ID:** 54741

**UniProt ID:** [O15243](#)

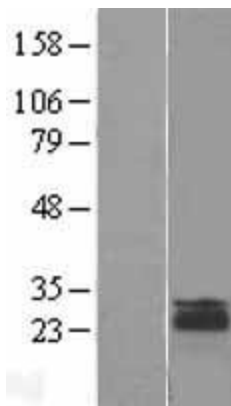
**Cytogenetics:** 1p31.3  
**Domains:** Vps55  
**Protein Families:** Druggable Genome, Transmembrane  
**MW:** 14.3 kDa

**Gene Summary:** LEPROT is associated with the Golgi complex and endosomes and has a role in cell surface expression of growth hormone receptor (GHR; MIM 600946) and leptin receptor (OBR, or LEPR; MIM 601007), thereby altering receptor-mediated cell signaling (Couturier et al., 2007 [PubMed 18042720]; Touvier et al., 2009 [PubMed 19907080]).[supplied by OMIM, Jul 2010]

**Product images:**



Circular map for RC208878



Western blot validation of overexpression lysate (Cat# [LY413721]) using anti-DDK antibody (Cat# [TA50011-100]). Left: Cell lysates from untransfected HEK293T cells; Right: Cell lysates from HEK293T cells transfected with RC208878 using transfection reagent MegaTran 2.0 (Cat# [TT210002]).