

## Product datasheet for **RC208876**

### TXN (NM\_003329) Human Tagged ORF Clone

#### Product data:

**Product Type:** Expression Plasmids  
**Product Name:** TXN (NM\_003329) Human Tagged ORF Clone  
**Tag:** Myc-DDK  
**Symbol:** TXN  
**Synonyms:** TRDX; TRX; TRX1; Trx80  
**Mammalian Cell Selection:** Neomycin  
**Vector:** pCMV6-Entry (PS100001)  
**E. coli Selection:** Kanamycin (25 ug/mL)  
**ORF Nucleotide Sequence:** >RC208876 ORF sequence  
Red=Cloning site Blue=ORF Green=Tags(s)

TTTTGTAATACGACTCACTATAGGGCGGCCGGAATTCGTCGACTGGATCCGGTACCGAGGAGATCTGCC  
GCC**CGATCGCC**

ATGGTGAAGCAGATCGAGAGCAAGACTGCTTTTCAGGAAGCCTTGGACGCTGCAGGTGATAAACTTGTAG  
TAGTTGACTTCTCAGCCACGTGGTGTGGCCTTGCAAAATGATCAAGCCTTCTTTTCATTCCCTCTCTGA  
AAAGTATCCAACGTGATATTCCTTGAAGTAGATGTGGATGACTGTCAGGATGTTGCTTCAGAGTGTGAA  
GTCAAATGCATGCCAACATTCAGTTTTTAAGAAGGGACAAAAGGTGGGTGAATTTCTGGAGCCAATA  
AGGAAAAGCTTGAAGCCACCATAATGAATTAGTC

**ACGCGT**ACGCGGCCGCTCGAGCAGAAACTCATCTCAGAAGAGGATCTGGCAGCAAATGATATCCTGGATT  
ACAAGGATGACGACGATAAGGTTTAA

**Protein Sequence:** >RC208876 protein sequence  
Red=Cloning site Green=Tags(s)  
MVKQIESKTAFQEALDAAGDKLVVVDVSATWCGPCKMIKPFHSLSEKYSNVIFLEVDVDDCQDVASECE  
VKCMPTFQFFKKGQKVGEFSGANKEKLEATINELV

**TR**TRPLEQKLISEEDLAANDILDYKDDDDKV

**Chromatograms:** [https://cdn.origene.com/chromatograms/mk6035\\_c09.zip](https://cdn.origene.com/chromatograms/mk6035_c09.zip)

**Restriction Sites:** SgfI-MluI



[View online »](#)

**Cloning Scheme:**


**ACCN:** NM\_003329

**ORF Size:** 315 bp

**OTI Disclaimer:** The molecular sequence of this clone aligns with the gene accession number as a point of reference only. However, individual transcript sequences of the same gene can differ through naturally occurring variations (e.g. polymorphisms), each with its own valid existence. This clone is substantially in agreement with the reference, but a complete review of all prevailing variants is recommended prior to use. [More info](#)

**OTI Annotation:** This clone was engineered to express the complete ORF with an expression tag. Expression varies depending on the nature of the gene.

**Components:** The ORF clone is ion-exchange column purified and shipped in a 2D barcoded Matrix tube containing 10ug of transfection-ready, dried plasmid DNA (reconstitute with 100 ul of water).

- Reconstitution Method:**
1. Centrifuge at 5,000xg for 5min.
  2. Carefully open the tube and add 100ul of sterile water to dissolve the DNA.
  3. Close the tube and incubate for 10 minutes at room temperature.
  4. Briefly vortex the tube and then do a quick spin (less than 5000xg) to concentrate the liquid at the bottom.
  5. Store the suspended plasmid at -20°C. The DNA is stable for at least one year from date of shipping when stored at -20°C.

**Note:** Plasmids are not sterile. For experiments where strict sterility is required, filtration with 0.22um filter is required.

**RefSeq:** [NM\\_003329.4](#)

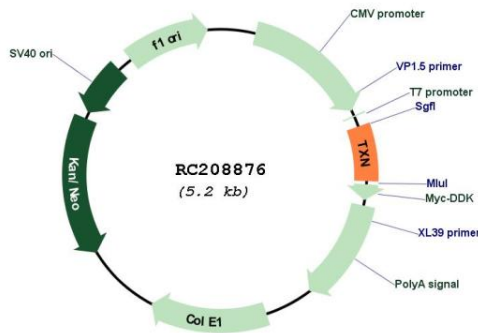
**RefSeq Size:** 886 bp

**RefSeq ORF:** 318 bp

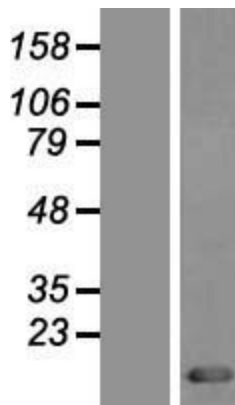
**Locus ID:** 7295  
**UniProt ID:** [P10599](#)  
**Cytogenetics:** 9q31.3  
**Domains:** thiored  
**Protein Families:** Druggable Genome  
**MW:** 11.7 kDa  
**Gene Summary:**

The protein encoded by this gene acts as a homodimer and is involved in many redox reactions. The encoded protein is active in the reversible S-nitrosylation of cysteines in certain proteins, which is part of the response to intracellular nitric oxide. This protein is found in the cytoplasm. Two transcript variants encoding different isoforms have been found for this gene. [provided by RefSeq, Oct 2011]

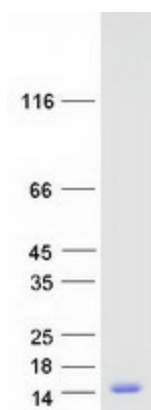
### Product images:



Circular map for RC208876



Western blot validation of overexpression lysate (Cat# [LY418748]) using anti-DDK antibody (Cat# [TA50011-100]). Left: Cell lysates from untransfected HEK293T cells; Right: Cell lysates from HEK293T cells transfected with RC208876 using transfection reagent MegaTran 2.0 (Cat# [TT210002]).



Coomassie blue staining of purified TXN protein (Cat# [TP308876]). The protein was produced from HEK293T cells transfected with TXN cDNA clone (Cat# RC208876) using MegaTran 2.0 (Cat# [TT210002]).