

## Product datasheet for **RC208875**

### Von Hippel Lindau (VHL) (NM\_198156) Human Tagged ORF Clone

#### Product data:

Product Type:	Expression Plasmids
Product Name:	Von Hippel Lindau (VHL) (NM_198156) Human Tagged ORF Clone
Tag:	Myc-DDK
Symbol:	Von Hippel Lindau
Synonyms:	HRCA1; pVHL; RCA1; VHL1
Mammalian Cell Selection:	Neomycin
Vector:	pCMV6-Entry (PS100001)
E. coli Selection:	Kanamycin (25 ug/mL)
ORF Nucleotide Sequence:	>RC208875 ORF sequence Red=Cloning site Blue=ORF Green=Tags(s)

TTTTGTAATACGACTCACTATAGGGCGGCCGGAATTCGTCGACTGGATCCGGTACCGAGGAGATCTGCCGCC**CGATCGCC**

ATGCCCGGAGGGCGGAGAAGTGGGACGAGGCCGAGGTAGGCGCGGAGGAGGCAGGCGTGAAGAGTACGGCCCTGAAGAAGACGGCGGGGAGGAGTCCGGCGCCGAGGAGTCCGGCCCGAAGAGTCCGGCCCGGAGGA  
ACTGGGCGCCGAGGAGGAGATGGAGGCCGGCGCGCCGCGCCCGTCTGCGCTCGGTGAAGTCCGCGGAG  
CCCTCCAGGTCACTTCTGCAATCGCAGTCCGCGCGTCTGCTGCCGTATGGCTCAACTCGACGGCG  
AGCGCGAGCCCTACCAACGCTGCCGCTGGCACGGGCCCGCCGATCTACAGCTACCGAGTGTATACTCT  
GAAAGAGCGATGCCTCCAGGTTGTCCGGAGCCTAGTCAAGCCTGAGAATTACAGGAGACTGGACATCGTC  
AGGTGCGCTCTACGAAGATCTGGAAGACCACCAATGTGCAGAAAGACCTGGAGCGGCTGACACAGGAGC  
GCATTGCACATCAACGGATGGGAGAT

**ACGCGT**ACGCGGCCGCTCGAGCAGAACTCATCTCAGAAGAGGATCTGGCAGCAAATGATATCCTGGATT  
ACAAGGATGACGACGATAAGGTTTAA

Protein Sequence:	>RC208875 protein sequence Red=Cloning site Green=Tags(s)
-------------------	--

MPRRAENWDEAEVGAAEAGVEEYGPPEEDGGEEESGAEESGPEESGPEELGAEEMEAGRPRPVLRSVNSRE  
PSQVIFCNRSPRVVLPVWLNFDGEPQPYPTLPPGTGRRISYRVVYTLKERCLQVVRSLVKPENYRRLDIV  
RSLYEDLEDHPNVQKDLERLTQERIAHQRMGD

**TR**TRPLEQKLISEEDLAANDILDYKDDDDKV

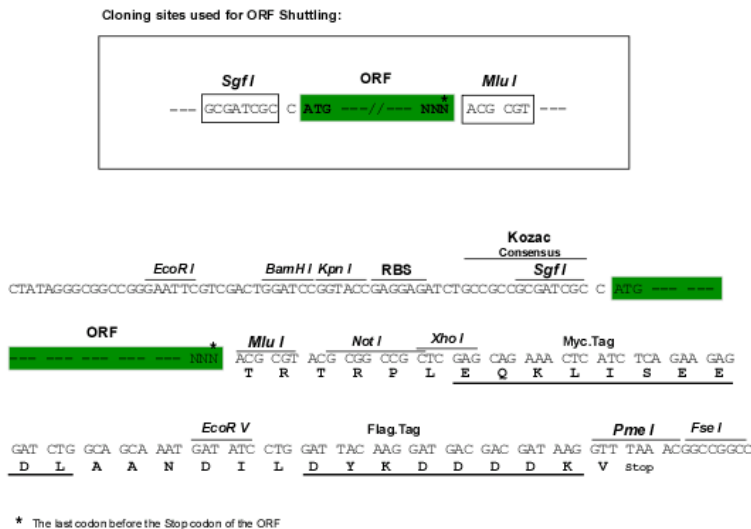
Chromatograms:	<a href="https://cdn.origene.com/chromatograms/mk6778_h02.zip">https://cdn.origene.com/chromatograms/mk6778_h02.zip</a>
----------------	---



[View online »](#)

Restriction Sites: SgfI-MluI

Cloning Scheme:



ACCN: NM\_198156

ORF Size: 516 bp

OTI Disclaimer: The molecular sequence of this clone aligns with the gene accession number as a point of reference only. However, individual transcript sequences of the same gene can differ through naturally occurring variations (e.g. polymorphisms), each with its own valid existence. This clone is substantially in agreement with the reference, but a complete review of all prevailing variants is recommended prior to use. [More info](#)

OTI Annotation: This clone was engineered to express the complete ORF with an expression tag. Expression varies depending on the nature of the gene.

Components: The ORF clone is ion-exchange column purified and shipped in a 2D barcoded Matrix tube containing 10ug of transfection-ready, dried plasmid DNA (reconstitute with 100 ul of water).

Reconstitution Method:

1. Centrifuge at 5,000xg for 5min.
2. Carefully open the tube and add 100ul of sterile water to dissolve the DNA.
3. Close the tube and incubate for 10 minutes at room temperature.
4. Briefly vortex the tube and then do a quick spin (less than 5000xg) to concentrate the liquid at the bottom.
5. Store the suspended plasmid at -20°C. The DNA is stable for at least one year from date of shipping when stored at -20°C.

RefSeq: [NM\\_198156.3](#)

RefSeq Size: 4437 bp

RefSeq ORF: 519 bp

Locus ID: 7428

UniProt ID: [P40337](#)

**Cytogenetics:** 3p25.3

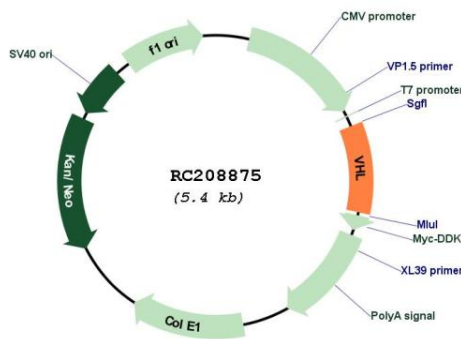
**Protein Families:** Druggable Genome, Transcription Factors

**Protein Pathways:** Pathways in cancer, Renal cell carcinoma, Ubiquitin mediated proteolysis

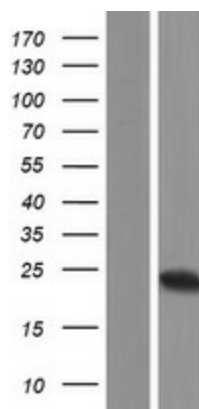
**MW:** 19.7 kDa

**Gene Summary:** Von Hippel-Lindau syndrome (VHL) is a dominantly inherited familial cancer syndrome predisposing to a variety of malignant and benign tumors. A germline mutation of this gene is the basis of familial inheritance of VHL syndrome. The protein encoded by this gene is a component of the protein complex that includes elongin B, elongin C, and cullin-2, and possesses ubiquitin ligase E3 activity. This protein is involved in the ubiquitination and degradation of hypoxia-inducible-factor (HIF), which is a transcription factor that plays a central role in the regulation of gene expression by oxygen. RNA polymerase II subunit POLR2G/RPB7 is also reported to be a target of this protein. Alternatively spliced transcript variants encoding distinct isoforms have been observed. [provided by RefSeq, Jul 2008]

**Product images:**



Circular map for RC208875



Western blot validation of overexpression lysate (Cat# [LY404985]) using anti-DDK antibody (Cat# [TA50011-100]). Left: Cell lysates from untransfected HEK293T cells; Right: Cell lysates from HEK293T cells transfected with RC208875 using transfection reagent MegaTran 2.0 (Cat# [TT210002]).