

Product datasheet for RC208873

SERPINA6 (NM_001756) Human Tagged ORF Clone

Product data:

Product Type:	Expression Plasmids
Product Name:	SERPINA6 (NM_001756) Human Tagged ORF Clone
Tag:	Myc-DDK
Symbol:	SERPINA6
Synonyms:	CBG
Mammalian Cell Selection:	Neomycin
Vector:	pCMV6-Entry (PS100001)
E. coli Selection:	Kanamycin (25 ug/mL)
ORF Nucleotide Sequence:	>RC208873 representing NM_001756 Red=Cloning site Blue=ORF Green=Tags(s)

TTTTGTAATACGACTCACTATAGGGCGGCCGGAATTCGTCGACTGGATCCGGTACCGAGGAGATCTGCC
GCC**CGATCGCC**

ATGCCACTCCTCCTGTACACCTGTCTTCTCTGGCTGCCACCAGCGGCCTCTGGACCGTCCAGGCCATGG
ATCCTAACGCTGCTTATGTGAACATGAGTAACCATCACCGGGCCTGGCTTCAGCCAACGTTGACTTTGC
CTTCAGCCTGTATAAGCACCTAGTGGCCTTGAGTCCAAAAAGAACATTTTCATCTCCCCTGTGAGCATC
TCCATGGCCTTAGCTATGCTGTCCCTGGGCACCTGTGGCCACACACGGGCCAGCTTCTCCAGGGCCTGG
GTTTCAACCTCACTGAGAGGTCTGAGACTGAGATCCACCAGGTTTCCAGCACCTGCACCAACTCTTTGC
AAAGTCAGACACCAGCTTAGAAATGACCATGGCAATGCCTGTTTCTTGATGGCAGCCTGGAGTTGCTG
GAGTCATTCTCAGCAGACATCAAGCACTACTATGAGTCAGAGGTCTTGGCTATGAATTTCCAGGACTGGG
CAACAGCCAGCAGACAGATCAACAGCTATGTCAAGAATAAGACACAGGGGAAAATTTGTCGACTTGTTTTC
AGGGCTGGATAGCCCAGCCATCCTCGTCTGGTCAACTATATCTTCTTCAAAGGCACATGGACACAGCCC
TTTGACCTGGCAAGCACCAGGGAGGAGAACTTCTATGTGGACGAGACAACGTGGTGAAGGTGCCATGA
TGTTGCAGTCGAGCACCATCAGTTACCTTCATGACCGGAGCTCCCCTGCCAGCTGGTGCAGATGAACTA
CGTGGGCAATGGGACTGTCTTCTCATCCTTCCGGACAAGGGGAAGATGAACACAGTCATCGCTGCACTG
AGCCGGACACGATTAACAGGTGGTCCGACGGCCTGACCAGCAGCCAGGTGGACCTGTACATTTCAAAGG
TCACCATCTCTGGAGTCTATGACCTCGGAGATGTGCTGGAGGAAATGGGCATTGCAGACTTGTTCACCAA
CCAGGCAAAATTTCTCACGCATCACCCAGGACGCCAGCTGAAGTCATCAAAGGTGGTCCATAAAGCTGTG
CTGCAACTCAATGAGGAGGTGTGGACACAGCTGGCTCCACTGGGGTCACCCTAAACCTGACGTCCAAGC
CTATCATCTTGCCTTTCAACCAGCCCTTCATCATCATGATCTTCGACCACTTCACCTGGAGCAGCCTTTT
CCTGGCGAGGGTTATGAACCCAGTG

ACGGCTACGGCGCCGCTCGAGCAGAAACTCATCTCAGAAGAGGATCTGGCAGCAAATGATATCTGGATT
ACAAGGATGACGACGATAAGGTTTAA



[View online »](#)

Reconstitution Method:

1. Centrifuge at 5,000xg for 5min.
2. Carefully open the tube and add 100ul of sterile water to dissolve the DNA.
3. Close the tube and incubate for 10 minutes at room temperature.
4. Briefly vortex the tube and then do a quick spin (less than 5000xg) to concentrate the liquid at the bottom.
5. Store the suspended plasmid at -20°C. The DNA is stable for at least one year from date of shipping when stored at -20°C.

RefSeq: [NM_001756.3](#), [NP_001747.2](#)

RefSeq Size: 1510 bp

RefSeq ORF: 1218 bp

Locus ID: 866

UniProt ID: [P08185](#)

Cytogenetics: 14q32.13

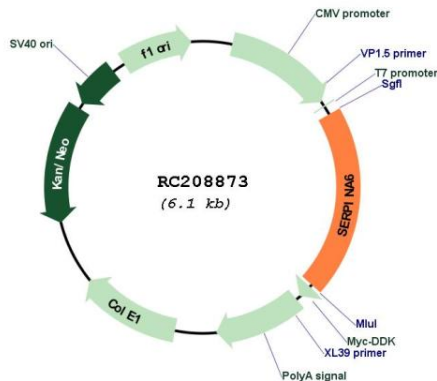
Domains: SERPIN

Protein Families: Druggable Genome, Secreted Protein

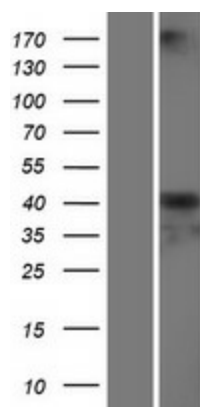
MW: 45.12 kDa

Gene Summary: This gene encodes an alpha-globulin protein with corticosteroid-binding properties. This is the major transport protein for glucocorticoids and progesterins in the blood of most vertebrates. The gene localizes to a chromosomal region containing several closely related serine protease inhibitors which may have evolved by duplication events. [provided by RefSeq, Jul 2008]

Product images:



Circular map for RC208873



Western blot validation of overexpression lysate (Cat# [LY419763]) using anti-DDK antibody (Cat# [TA50011-100]). Left: Cell lysates from untransfected HEK293T cells; Right: Cell lysates from HEK293T cells transfected with RC208873 using transfection reagent MegaTran 2.0 (Cat# [TT210002]).