

## Product datasheet for RC208872

### Cathelicidin (CAMP) (NM\_004345) Human Tagged ORF Clone

#### Product data:

**Product Type:** Expression Plasmids  
**Product Name:** Cathelicidin (CAMP) (NM\_004345) Human Tagged ORF Clone  
**Tag:** Myc-DDK  
**Symbol:** Cathelicidin  
**Synonyms:** CAP-18; CAP18; CRAMP; FALL-39; FALL39; HSD26; LL37  
**Mammalian Cell Selection:** Neomycin  
**Vector:** pCMV6-Entry (PS100001)  
**E. coli Selection:** Kanamycin (25 ug/mL)  
**ORF Nucleotide Sequence:** >RC208872 ORF sequence  
 Red=Cloning site Blue=ORF Green=Tags(s)

TTTTGTAATACGACTCACTATAGGGCGCCGGGAATTCGTCGACTGGATCCGGTACCGAGGAGATCTGCC  
GCC**CGATCGCC**

ATGAAGACCCAAAGGGATGGCCACTCCCTGGGGCGGTGGTCACTGGTGCTCCTGCTGCTGGGCCTGGTGA  
TGCCTCTGGCCATCATTGCCAGGTCCTCAGCTACAAGGAAGCTGTGCTTCGTGCTATAGATGGCATCAA  
CCAGCGGTCTCGGATGCTAACCTCTACCGCTCCTGGACCTGGACCCAGGCCACGATGGATGGGGAC  
CCAGACACGCCAAAGCCTGTGAGCTTACAGTGAAGGAGACAGTGTGCCACAGGACGACACAGCAGTCAC  
CAGAGGATTGTGACTTCAAGAAGGACGGGCTGGTGAAGCGGTGTATGGGGACAGTGACCTCAACCAGGC  
CAGGGGCTCCTTTGACATCAGTTGTGATAAGGATAACAAGAGATTTGCCCTGCTGGGTGATTTCTCCGG  
AAATCTAAAGAGAAGATTGGCAAAGAGTTTAAAAGAATTGTCCAGAGAATCAAGGATTTTTTGC GGAAATC  
TTGTACCCAGGACAGAGTCC

**ACGCGT**ACGCGGCCGCTCGAGCAGAACTCATCTCAGAAGAGGATCTGGCAGCAAATGATATCCTGGATT  
ACAAGGATGACGACGATAAGGTTTAA

**Protein Sequence:** >RC208872 protein sequence  
 Red=Cloning site Green=Tags(s)

MKTQRDGHSLGRWSLVLLLLGLVMP LAIIAQVLSYKEAVLRAIDGINQRSSDANLYRLDLLDPRPTMDGD  
PDTPKPVSFYKETVCPRTTQQSPEDCDFKDG LVKRCMGTVTLNQARGSFDISCDKDNKRFALLGDFFR  
KSKEKIGKEFKRIVQRIKDFLRNLVPRTES

**TRTRPLEQKLI**SEEDLAANDILDYKDDDDKV

**Chromatograms:** [https://cdn.origene.com/chromatograms/mk6035\\_g03.zip](https://cdn.origene.com/chromatograms/mk6035_g03.zip)



[View online »](#)

Restriction Sites: SgfI-MluI

Cloning Scheme:



ACCN: NM\_004345

ORF Size: 510 bp

OTI Disclaimer: The molecular sequence of this clone aligns with the gene accession number as a point of reference only. However, individual transcript sequences of the same gene can differ through naturally occurring variations (e.g. polymorphisms), each with its own valid existence. This clone is substantially in agreement with the reference, but a complete review of all prevailing variants is recommended prior to use. [More info](#)

OTI Annotation: This clone was engineered to express the complete ORF with an expression tag. Expression varies depending on the nature of the gene.

Components: The ORF clone is ion-exchange column purified and shipped in a 2D barcoded Matrix tube containing 10ug of transfection-ready, dried plasmid DNA (reconstitute with 100 ul of water).

Reconstitution Method:

1. Centrifuge at 5,000xg for 5min.
2. Carefully open the tube and add 100ul of sterile water to dissolve the DNA.
3. Close the tube and incubate for 10 minutes at room temperature.
4. Briefly vortex the tube and then do a quick spin (less than 5000xg) to concentrate the liquid at the bottom.
5. Store the suspended plasmid at -20°C. The DNA is stable for at least one year from date of shipping when stored at -20°C.

Note: Plasmids are not sterile. For experiments where strict sterility is required, filtration with 0.22um filter is required.

RefSeq: [NM\\_004345.5](#)

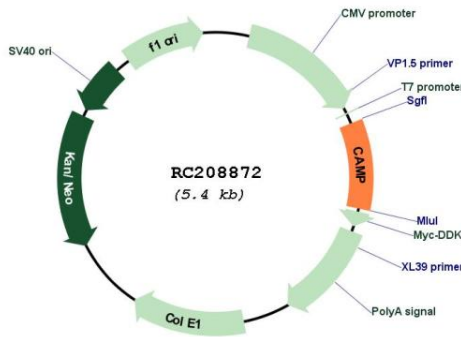
RefSeq Size: 758 bp

RefSeq ORF: 513 bp

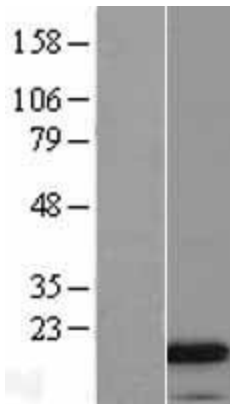
**Locus ID:** 820  
**UniProt ID:** [P49913](#)  
**Cytogenetics:** 3p21.31  
**Domains:** Cathelicidins  
**Protein Families:** Secreted Protein, Transmembrane  
**MW:** 19.3 kDa

**Gene Summary:** This gene encodes a member of an antimicrobial peptide family, characterized by a highly conserved N-terminal signal peptide containing a cathelin domain and a structurally variable cationic antimicrobial peptide, which is produced by extracellular proteolysis from the C-terminus. In addition to its antibacterial, antifungal, and antiviral activities, the encoded protein functions in cell chemotaxis, immune mediator induction, and inflammatory response regulation. [provided by RefSeq, Sep 2014]

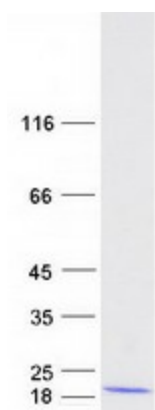
### Product images:



Circular map for RC208872



Western blot validation of overexpression lysate (Cat# [LY401385]) using anti-DDK antibody (Cat# [TA50011-100]). Left: Cell lysates from untransfected HEK293T cells; Right: Cell lysates from HEK293T cells transfected with RC208872 using transfection reagent MegaTran 2.0 (Cat# [TT210002]).



Coomassie blue staining of purified CAMP protein (Cat# [TP308872]). The protein was produced from HEK293T cells transfected with CAMP cDNA clone (Cat# RC208872) using MegaTran 2.0 (Cat# [TT210002]).