

Product datasheet for **RC208867**

ANGPTL3 (NM_014495) Human Tagged ORF Clone

Product data:

| | |
|---------------------------|--|
| Product Type: | Expression Plasmids |
| Product Name: | ANGPTL3 (NM_014495) Human Tagged ORF Clone |
| Tag: | Myc-DDK |
| Symbol: | ANGPTL3 |
| Synonyms: | ANG-5; ANGPT5; ANL3; FHBL2 |
| Mammalian Cell Selection: | Neomycin |
| Vector: | pCMV6-Entry (PS100001) |
| E. coli Selection: | Kanamycin (25 ug/mL) |



[View online »](#)

ORF Nucleotide Sequence:

>RC208867 ORF sequence
 Red=Cloning site Blue=ORF Green=Tags(s)

TTTTGTAATACGACTCACTATAGGGCGGCCGGAATTCGTCGACTGGATCCGGTACCGAGGAGATCTGCC
 GCC**CGCATCGCC**

ATGTTCACAATTAAGCTCCTTCTTTTTATTGTTCTCTAGTTATTTCTCCAGAATTGATCAAGACAATT
 CATCATTTGATTCTATCTCCAGAGCCAAAATCAAGATTTGCTATGTTAGACGATGTAATAATTTTAGC
 CAATGGCCTCCTTCAGTTGGGACATGGTCTTAAAGACTTTGTCCATAAGACGAAGGGCCAAATTAATGAC
 ATATTTCAAAAATCAACATATTTGATCAGTCTTTTTATGATCTATCGCTGCAAACCAAGTAAATCAAAG
 AAGAAGAAAAGAACTGAGAAGAACTACATATAAACTACAAGTCAAAAATGAAGAGGTAAAGAATATGTC
 ACTTGAACCAACTCAAAAATTTGAAAGCCTCCTAGAAGAAAAATTTCTACTTCAACAAAAAGTAAATAT
 TTAGAAGGCAACTAACTAACTAATTCAAAAATCAACCTGAAACTCCAGAACACCCAGAAGTAACTTAC
 TAAAACTTTTGTAGAAAAACAAGATAATAGCATCAAAGACCTTCTCCAGACCGTGAAGACCAATATAA
 ACAATTAACCAACAGCATAGTCAAATAAAGAAATAGAAAATCAGCTCAGAAGGACTAGTATTCAGAA
 CCCACAGAAATTTCTCTATCTTCAAGCCAAGAGCACCAAGAACTACTCCCTTTCTTCAGTTGAATGAAA
 TAAGAAATGTA AAAACATGATGGCATTCTGCTGAATGTACCACATTTATAACAGAGGTGAACATACAAG
 TGGCATGTATGCCATCAGACCCAGCAACTCTCAAGTTTTTCATGTCTACTGTGATGTTATATCAGGTAGT
 CCATGGACATTAATCAACATCGAATAGATGGATCACAAAACCTCAATGAAACGTGGGAGAACTACAAT
 ATGGTTTTGGGAGGCTTGATGGAGAATTTGGTTGGGCCTAGAGAAGATACTCCATAGTGAAGCAATC
 TAATTAATGTTTTACGAATTGAGTTGGAAGACTGGAAGACAACAAACATTATATTGAATATCTTTTTAC
 TTGGGAAATCACGAAACCAACTATACGCTACATCTAGTTGCGATTACTGGCAATGTCCCAATGCAATCC
 CGGAAAAACAAGATTTGGTGTCTACTTTGGGATCACAAAGCAAAGGACACTTCAACTGCCAGAGGG
 TTATTCAGGAGGCTGGTGGTCATGATGAGTGTGGAGAAAACAACCTAAATGGTAAATATAACAAACCA
 AGAGCAAAATCTAAGCCAGAGAGGAGAAGAGGATTATCTTGAAGTCTCAAAAATGGAAGTTATACTCTA
 TAAAATCAACAAAATGTTGATCCATCCAACAGATTGAGAAAGCTTTGAA

ACGCGTACGCGGCCGCTCGAGCAGAAACTCATCTCAGAAGAGGATCTGGCAGCAAATGATATCCTGGATT
 ACAAGGATGACGACGATAAGGTTTAA

Protein Sequence:

>RC208867 protein sequence
 Red=Cloning site Green=Tags(s)

MFTIKLLLFIVPLVISSRIDQDNSSFDSLSPFKSRFAMLDVVKILANGLLQLGHGLKDFVHKTKGQIND
 IFQKLNIFDQSFYDLSLQTSEIKEEKELRRTTYKLQVKNEEVKNMSLELNSKLESLLLEEKILLQKVKY
 LEEQLTNLIQNQPETPEHPEVTSKTFVEKQDNSIKDLLQTVEDQYKQLNQHSQIKEIENQLRRTSIQE
 PTEISLSSKPRAPRTTFFLQLNEIRNVKHDGIPAECTTIYNRGEHTSGMYAIRPSNSQVFHVCVVISGS
 PWTLIQHRIDGSQNFNETWENYKYGFRLDGEFVLGLEKIYSIVKQSNYVLRIELEDWKNKHYIEYSFY
 LGNHETNYTLHLVAITGNVPNAIPENKDLVFSTWDHKAKGHFNCPGYSGGWWWHDECGENNLNGKYNKP
 RAKSKPERRRGLSWKSQNGRLYSIKSTKMLIHPTDSESE

TRTRPLEQKLISEEDLAANDILDYKDDDDKV

Chromatograms:

https://cdn.origene.com/chromatograms/mk6178_h10.zip

Restriction Sites:

Sgfl-Mlul

Cloning Scheme:


ACCN: NM_014495

ORF Size: 1380 bp

OTI Disclaimer: The molecular sequence of this clone aligns with the gene accession number as a point of reference only. However, individual transcript sequences of the same gene can differ through naturally occurring variations (e.g. polymorphisms), each with its own valid existence. This clone is substantially in agreement with the reference, but a complete review of all prevailing variants is recommended prior to use. [More info](#)

OTI Annotation: This clone was engineered to express the complete ORF with an expression tag. Expression varies depending on the nature of the gene.

Components: The ORF clone is ion-exchange column purified and shipped in a 2D barcoded Matrix tube containing 10ug of transfection-ready, dried plasmid DNA (reconstitute with 100 ul of water).

Reconstitution Method:

1. Centrifuge at 5,000xg for 5min.
2. Carefully open the tube and add 100ul of sterile water to dissolve the DNA.
3. Close the tube and incubate for 10 minutes at room temperature.
4. Briefly vortex the tube and then do a quick spin (less than 5000xg) to concentrate the liquid at the bottom.
5. Store the suspended plasmid at -20°C. The DNA is stable for at least one year from date of shipping when stored at -20°C.

Note: Plasmids are not sterile. For experiments where strict sterility is required, filtration with 0.22um filter is required.

RefSeq: [NM_014495.4](#)

RefSeq Size: 2951 bp

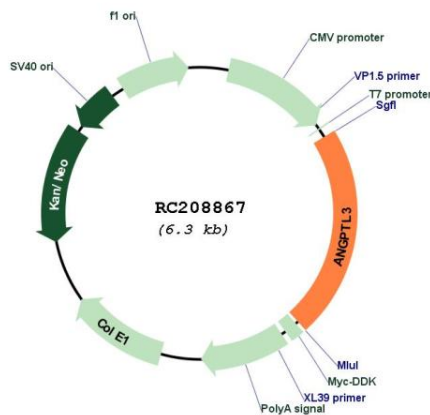
RefSeq ORF: 1383 bp

Locus ID: 27329

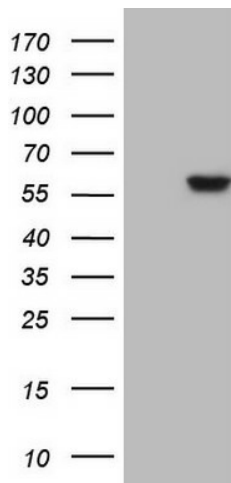
UniProt ID: [Q9Y5C1](#)
Cytogenetics: 1p31.3
Protein Families: Druggable Genome, Secreted Protein
MW: 53.6 kDa

Gene Summary: This gene encodes a member of a family of secreted proteins that function in angiogenesis. The encoded protein, which is expressed predominantly in the liver, is further processed into an N-terminal coiled-coil domain-containing chain and a C-terminal fibrinogen chain. The N-terminal chain is important for lipid metabolism, while the C-terminal chain may be involved in angiogenesis. Mutations in this gene cause familial hypobetalipoproteinemia type 2. [provided by RefSeq, Aug 2015]

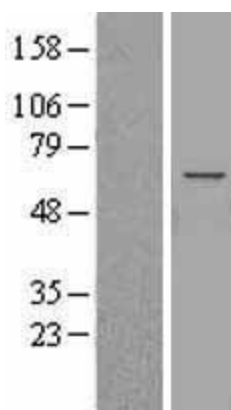
Product images:



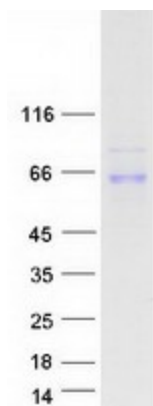
Circular map for RC208867



HEK293T cells were transfected with the pCMV6-ENTRY control (Cat# [PS100001], Left lane) or pCMV6-ENTRY ANGPTL3 (Cat# RC208867, Right lane) cDNA for 48 hrs and lysed. Equivalent amounts of cell lysates (5 ug per lane) were separated by SDS-PAGE and immunoblotted with anti-ANGPTL3(Cat# [TA807389]). Positive lysates [LY402339] (100ug) and [LC402339] (20ug) can be purchased separately from OriGene.



Western blot validation of overexpression lysate (Cat# [LY402339]) using anti-DDK antibody (Cat# [TA50011-100]). Left: Cell lysates from untransfected HEK293T cells; Right: Cell lysates from HEK293T cells transfected with RC208867 using transfection reagent MegaTran 2.0 (Cat# [TT210002]).



Coomassie blue staining of purified ANGPTL3 protein (Cat# [TP308867]). The protein was produced from HEK293T cells transfected with ANGPTL3 cDNA clone (Cat# RC208867) using MegaTran 2.0 (Cat# [TT210002]).