

Product datasheet for **RC208862**

CFHR3 (NM_021023) Human Tagged ORF Clone

Product data:

Product Type:	Expression Plasmids
Product Name:	CFHR3 (NM_021023) Human Tagged ORF Clone
Tag:	Myc-DDK
Symbol:	CFHR3
Synonyms:	CFHL3; DOWN16; FHR-3; FHR3; HLF4
Mammalian Cell Selection:	Neomycin
Vector:	pCMV6-Entry (PS100001)
E. coli Selection:	Kanamycin (25 ug/mL)
ORF Nucleotide Sequence:	>RC208862 ORF sequence Red=Cloning site Blue=ORF Green=Tags(s)

TTTTGTAATACGACTCACTATAGGGCGGCCGGAATTCGTCGACTGGATCCGGTACCGAGGAGATCTGCC
GCC**CGATCGCC**

ATGTTGTTACTAATCAATGTCATTCTGACCTTGTGGTTCCTGTGCTAATGGACAAGTAAACCTTGTG
ATTTCCAGACATTAACATGGAGGTCTATTTTCATGAGAATATGCGTAGACCATACTTTCCAGTAGCTGT
AGGAAAAATTACTCCTATTACTGTGATGAACATTTTGAGACTCCTTCAGGAAGTTACTGGGATTACATT
CATTGCACACAAAATGGGTGGTCACCAGCAGTACCATGTCTCAGAAAATGTTATTTTCTTATTTGGAAA
ATGGATATAATCAAAATTATGGAAGAAAGTTTGTACAGGGTAACTCTACAGAAGTTGCCTGCCATCCTGG
CTACGGTCTTCCAAAAGCGCAGACCACAGTTACATGTACGGAGAAAGGCTGGTCTCCTACTCCCAGATGC
ATCCGTGTGAGAATGCTCAAAATCAGATATAGAAAATGAAAATGGATTCAATTTCCGAATCTTCTCTA
TTTATATTTTAAATAAGAAAACAATATAAATGTAAACCAGGATATGCAACAGCAGATGGAAAATCTTC
AGGATCAATTACATGTTTGCAAAATGGATGGTCAGCACACCAATTTGCATTAATCTTCAGAAAAGTGT
GGCCTCCTCCACCTATTAGCAATGGTATACCACCTCTTTCTACTAAAAGTGTATGTCCACAGTCAA
GAGTCGAGTACCAATGCCAGCCCTACTATGAACTTCAGGGTCTAATTATGTAACATGTAGTAATGGAGA
GTGGTCGGAACCACCAAGATGCATACATCCATGATAATAAAGTGAAGAAAACATGAATAAAAATAACATA
AAGTTAAAAGGAAGAAGTGACAGAAAATATTATGCAAAAACAGGGGATACCATTGAATTTATGTGTAAT
TGGGATATAATGCAAAATACATCAATTCATTTCAAGCAGTGTGTCCGGAAGGGATAGTGAATACCC
CAGATGCCAA

ACGCGTACGCGGCCGCTCGAGCAGAAACTCATCTCAGAAGAGGATCTGGCAGCAAATGATATCCTGGATT
ACAAGGATGACGACGATAAGGTTTAA



[View online »](#)

Protein Sequence: >RC208862 protein sequence
Red=Cloning site Green=Tags(s)

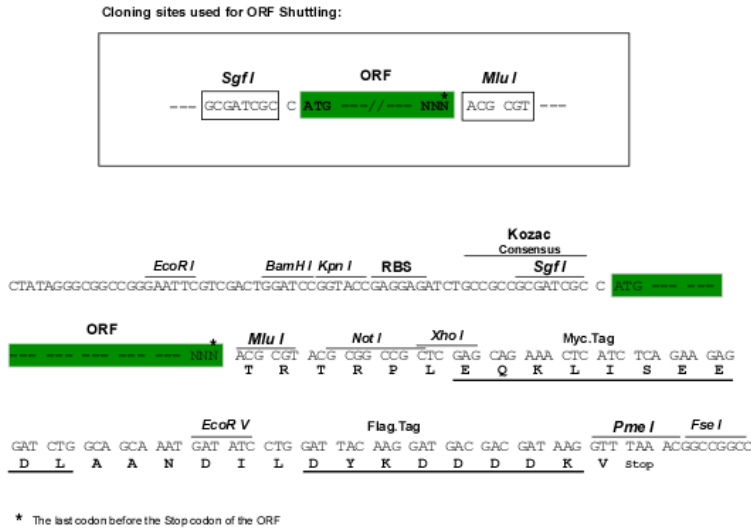
MLLLINVILTLWVSCANGQVKPCDFPDIKHGGLFHENMRRPYFPVAVGKYYSYQCDEHFETPSGSYWDYI
 HCTQNGWSPA VPLRKCYPYLENGYNQNYGRKFVQGNSTE VACHPGYGLPKAQT TVTCTEKGWSPTPRC
 IRVRTCSKSDIEIENGFI SESSSIYILNKEIQYKCKPGYATADGNSSGSITCLQNGWSAQPICINSSEKC
 GPPPI SNGD TTSFLLKVVYPQSRVEYQCQPYE LQGSNYVTCSNGEWSEPPRCIHP CII TEENMNKNNI
 KLKGRSDRKYAKTGDTIEFMCKLGYNANTSILSFQAVCREGIVEYPRCE

TRTRPLEQKLISEEDLAANDILDYKDDDDKV

Chromatograms: https://cdn.origene.com/chromatograms/mk6706_g09.zip

Restriction Sites: SgfI-MluI

Cloning Scheme:



* The last codon before the Stop codon of the ORF

ACCN: NM_021023

ORF Size: 990 bp

OTI Disclaimer: The molecular sequence of this clone aligns with the gene accession number as a point of reference only. However, individual transcript sequences of the same gene can differ through naturally occurring variations (e.g. polymorphisms), each with its own valid existence. This clone is substantially in agreement with the reference, but a complete review of all prevailing variants is recommended prior to use. [More info](#)

OTI Annotation: This clone was engineered to express the complete ORF with an expression tag. Expression varies depending on the nature of the gene.

Components: The ORF clone is ion-exchange column purified and shipped in a 2D barcoded Matrix tube containing 10ug of transfection-ready, dried plasmid DNA (reconstitute with 100 ul of water).

Reconstitution Method:

1. Centrifuge at 5,000xg for 5min.
2. Carefully open the tube and add 100ul of sterile water to dissolve the DNA.
3. Close the tube and incubate for 10 minutes at room temperature.
4. Briefly vortex the tube and then do a quick spin (less than 5000xg) to concentrate the liquid at the bottom.
5. Store the suspended plasmid at -20°C. The DNA is stable for at least one year from date of shipping when stored at -20°C.

RefSeq: [NM_021023.6](#)

RefSeq Size: 1667 bp

RefSeq ORF: 993 bp

Locus ID: 10878

UniProt ID: [Q02985](#)

Cytogenetics: 1q31.3

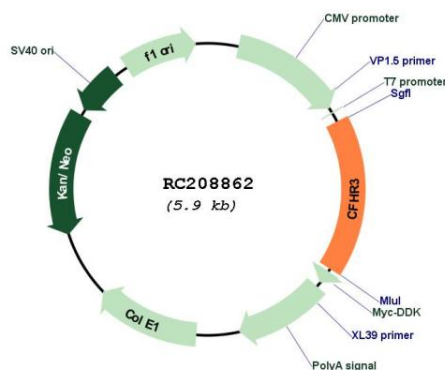
Domains: CCP

Protein Families: Secreted Protein

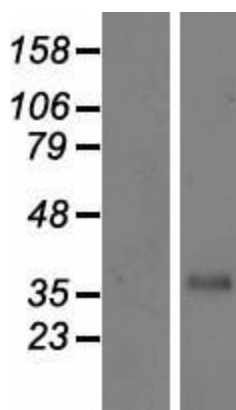
MW: 37.3 kDa

Gene Summary: The protein encoded by this gene is a secreted protein, which belongs to the complement factor H-related protein family. It binds to heparin, and may be involved in complement regulation. Mutations in this gene are associated with decreased risk of age-related macular degeneration, and with an increased risk of atypical hemolytic-uremic syndrome. Alternatively spliced transcript variants encoding different isoforms have been found for this gene. [provided by RefSeq, Oct 2011]

Product images:



Circular map for RC208862



Western blot validation of overexpression lysate (Cat# [LY412147]) using anti-DDK antibody (Cat# [TA50011-100]). Left: Cell lysates from untransfected HEK293T cells; Right: Cell lysates from HEK293T cells transfected with RC208862 using transfection reagent MegaTran 2.0 (Cat# [TT210002]).