

## Product datasheet for **RC208852**

### **Poly(A) RNA polymerase, mitochondrial (MTPAP) (NM\_018109) Human Tagged ORF Clone**

#### **Product data:**

Product Type:	Expression Plasmids
Product Name:	Poly(A) RNA polymerase, mitochondrial (MTPAP) (NM_018109) Human Tagged ORF Clone
Tag:	Myc-DDK
Symbol:	Poly(A) RNA polymerase, mitochondrial
Synonyms:	PAPD1; SPAX4; TENT6
Mammalian Cell Selection:	Neomycin
Vector:	pCMV6-Entry (PS100001)
E. coli Selection:	Kanamycin (25 ug/mL)



[View online »](#)

**ORF Nucleotide Sequence:**

>RC208852 ORF sequence  
 Red=Cloning site Blue=ORF Green=Tags(s)

TTTTGTAATACGACTCACTATAGGGCGGCCGGGAATTCGTCGACTGGATCCGGTACCGAGGAGATCTGCC  
 GCC**CGGATCGCC**

ATGGCGGTTCCCGCGTGGGGCTTTGACCCGTTTGAACCTGTGTGCCCGGAGAAGAACTCGAGTCCAGC  
 GGCTATCGTCAGGCTTTTGTAGTTGCCAGGAAGTGTGGCCAAAGACCTTAGGAGAGACGAGCAGCCTTC  
 AGGGAGCGTGGAGACAGGCTTTGAAGACAAGATTCCAAAAGGAGATTCTCTGAGATGCAAAATGAAAGA  
 CGAAGACAGGCACAGCGGACTGTTTTAATACATTGCCAGAGAAAATCAGTGAACAAGTTTCTTAAAT  
 ATTTATCCCAATTTGGACCTATTAATAATCATTCTTCTATGAAAGCTTTGGTCTCTATGCTGTCGTAGA  
 ATTTTGCAAAAGGAAAGCATAGGTTCACTGCAGAAATGGGACTCATACTCAAGCACGGCCATGGAGACT  
 GCAATTCATTGAGTACGTTTCTCAATCTGAAGTTGAAAACAGACTTCTGAACGGTCACGCGTAC  
 GGTCAGTAATCAGTTGCCAGTTCAAACAAGCAGCTTTTGAATTACTTTGTTATGCAGAAAGTATAGA  
 CGATCAGTGAACACTCTTTGAAGGAGTCCAGCTAACAGAGGAGAACACTAAGCTCCGATATCTCACC  
 TGTCTCTTATTGAAGACATGGCCGCGCGCATTTTCCAGACTGCATAGTCAGACCTTTGGCTCCCTCAG  
 TCAACTTTTTGGGAAGTTAGGATGTGATTTGGACATGTTTTTGGATCTAGATGAAACCAGAAACCTCAG  
 CGCTCACAAAGATCTCAGGAAATTTCTGATGGAATTTCAAGTGAATAATGTTCTTCCAGAAAGATTGCA  
 ACTCAGAAGATCTGTCTGTGTTAGGAGAGTGCCTTGACCACTTTGGCCCTGGCTGTGTGGGTGTGCAAA  
 AAATATTAATGCCCCTGTCCGCTCGTGTGAGGTTCTCACACCAGGCTCCGGATTTCAAGTGTGATTTGAC  
 TACGAACAATAGGATTGCCTTGACAAGTCCGAAGTCCCTTATATATGGTGCCTAGACTCAAGAGTG  
 AGAGCCTTGGTGTTCAGTGTACGGTGTGGGCTCGAGCACATTCCTAACAAAGTAGTATTCTGTGTCAT  
 GGATTACAAATTTCTCCCTTACAATGATGTCATCTTTTTTCTCCAGAGAAGATCACCCCTATTCTTCC  
 AACACTAGATTCCTTAAAAACCCTAGCAGATGCAGAAGATAAATGTGTAATAGAAGGCAACAACCGCACA  
 TTTGTTCTGACTTGAGTAGAATTAACCTTACAGAACACAGAAACATTAGAATTACTACTGAAGGAAT  
 TTTTTGAGTATTTGGCAATTTTCTTTTCGATAAAAAATCCATAAATATTCGACAGGGAAGGAGCAAAA  
 CAAACCTGATTCTTCTCCCTGTACATTGAGAATCCATTTGAACTTCTCTCAACATAAGCAAAAATGTA  
 AGTCAAAGCCAGCTGCAAAAATTTGTAGATTTGGCCCGAGAAAGTGCCTGGATTTTACAACAGGAAGATA  
 CAGATCGACCTTCCATATCAAGTAATCGGCCCTGGGGCTGGTATCCCTATTGCTACCATCTGCTCCAAA  
 CAGAAAGTCTTTACCAAGAAGAAAAACAATAAGTTTGAATTGAAACAGTCAAGAACTTGTAGAATCT  
 TTTAAAGGTAACAGAACAGAAAATTTCAAAAAACAGTGGGAAGAGAACAATTAGTACTCAGACA

AG**CGGACCG**ACGCGTACGCGGCCGCTCGAGCAGAACTCATCTCAGAAGAGGATCTGGCAGCAAATGATATCC  
 TGGATTACAAGGATGACGACGATAAGGTTAA

**Protein Sequence:**

>RC208852 protein sequence  
 Red=Cloning site Green=Tags(s)

MAVPGVGLLTRLNLCARRRTRVQRPIVRLLSCPGTVAKDLRRDEQPSGSVETGFEDKIPKRRFSEMQRN  
 REQAQRTVLIIHCPEKISENKFLKYLVSQFGPINNHFFYESFGLYAVVEFCQKESIGSLQNGHTHPSTAMET  
 AIPFRSRFFNLKLNQTSERSRVRSSNQLPRSNKQLFELLCYAESIDDQLNLLKEFQLTEENTKLRYLT  
 CSLIEDMAAAHFDPDCIVRPFSSVNTFGKLGCDLDMFLDLDETRNLSAHKISGNFLMEFQVKNVPSERIA  
 TQKILSVLGECLDHFPGCVGVQKILNARCPLVRFHQASGFQCDLTTNNRIALTSSELLYIYGALDSRV  
 RALVFSVRCWARAHLTSSIPGAWITNFSLTMMVIFLQRRSPPILPTLDSLKTLADAEDKCVIEGNNRT  
 FVRDL SRIKPSQNTETLELLLKEFFEYFGNFAFDKNSINIRQGREQNKPDSSPLYIQNPFETSLNISKNV  
 SQSQLQKFVDLARESAWILQQEDTRPSSNRPWGLVSLLLPSAPNRKSFTHKKNNKFAIETVKNLLES  
 LKGNRTENFTKTSKRTISTQT

SGP**TRTRPLEQKLI**SEEDLAANDILDYKDDDDKV

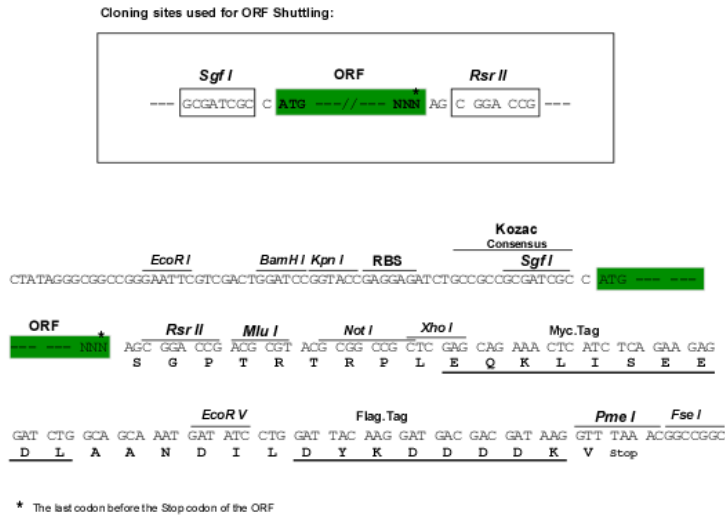
**Chromatograms:**

[https://cdn.origene.com/chromatograms/mk6618\\_h07.zip](https://cdn.origene.com/chromatograms/mk6618_h07.zip)

**Restriction Sites:**

Sgfl-RsrII

**Cloning Scheme:**



**ACCN:** NM\_018109

**ORF Size:** 1746 bp

**OTI Disclaimer:** The molecular sequence of this clone aligns with the gene accession number as a point of reference only. However, individual transcript sequences of the same gene can differ through naturally occurring variations (e.g. polymorphisms), each with its own valid existence. This clone is substantially in agreement with the reference, but a complete review of all prevailing variants is recommended prior to use. [More info](#)

**OTI Annotation:** This clone was engineered to express the complete ORF with an expression tag. Expression varies depending on the nature of the gene.

**Components:** The ORF clone is ion-exchange column purified and shipped in a 2D barcoded Matrix tube containing 10ug of transfection-ready, dried plasmid DNA (reconstitute with 100 ul of water).

- Reconstitution Method:**
1. Centrifuge at 5,000xg for 5min.
  2. Carefully open the tube and add 100ul of sterile water to dissolve the DNA.
  3. Close the tube and incubate for 10 minutes at room temperature.
  4. Briefly vortex the tube and then do a quick spin (less than 5000xg) to concentrate the liquid at the bottom.
  5. Store the suspended plasmid at -20°C. The DNA is stable for at least one year from date of shipping when stored at -20°C.

**RefSeq:** [NM\\_018109.4](#)

**RefSeq Size:** 5620 bp

**RefSeq ORF:** 1749 bp

**Locus ID:** 55149

**UniProt ID:** [Q9NVV4](#)

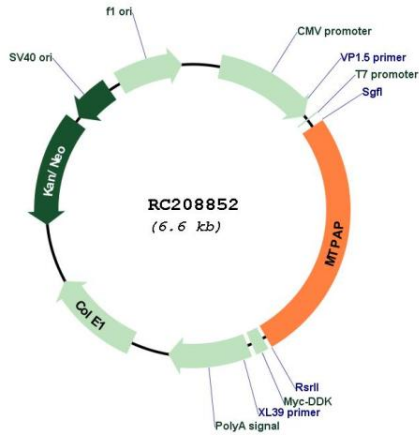
**Cytogenetics:** 10p11.23

**Domains:** PAP\_assoc

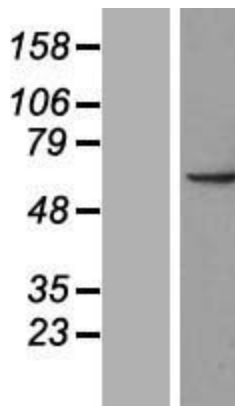
**MW:** 66.2 kDa

**Gene Summary:** The protein encoded by this gene is a member of the DNA polymerase type-B-like family. This enzyme synthesizes the 3' poly(A) tail of mitochondrial transcripts and plays a role in replication-dependent histone mRNA degradation.[provided by RefSeq, Jan 2011]

**Product images:**



Circular map for RC208852



Western blot validation of overexpression lysate (Cat# [LY413296]) using anti-DDK antibody (Cat# [TA50011-100]). Left: Cell lysates from untransfected HEK293T cells; Right: Cell lysates from HEK293T cells transfected with RC208852 using transfection reagent MegaTran 2.0 (Cat# [TT210002]).