

## Product datasheet for **RC208851**

### BCMA (TNFRSF17) (NM\_001192) Human Tagged ORF Clone

#### Product data:

**Product Type:** Expression Plasmids  
**Product Name:** BCMA (TNFRSF17) (NM\_001192) Human Tagged ORF Clone  
**Tag:** Myc-DDK  
**Symbol:** BCMA  
**Synonyms:** BCM; BCMA; CD269; TNFRSF13A  
**Mammalian Cell Selection:** Neomycin  
**Vector:** pCMV6-Entry (PS100001)  
**E. coli Selection:** Kanamycin (25 ug/mL)  
**ORF Nucleotide Sequence:** >RC208851 ORF sequence  
 Red=Cloning site Blue=ORF Green=Tags(s)

TTTTGTAATACGACTCACTATAGGGCGCCGGGAATTCGTCGACTGGATCCGGTACCGAGGAGATCTGCC  
 GCC**CGATCGCC**

ATGTTGCAGATGGCTGGGCAGTGCTCCAAAATGAATATTTTGACAGTTTGTTCATGCTTGCATACCTT  
 GTCAACTTCGATGTTCTTCTAATACTCCTCCTAACATGTCAGCGTTATTGTAATGCAAGTGTACCAA  
 TTCAGTAAAGGAACGAATGCGATTCTCTGGACCTGTTGGGACTGAGCTTAATAATTTCTTTGGCAGTT  
 TTCGTGCTAATGTTTTGCTAAGGAAGATAAGCTCTGAACCATTAGAGGACGAGTTAAAAACACAGGAT  
 CAGGTCTCCTGGCATGGCTAACATTGACCTGGAAAAGAGCAGGACTGGTGATGAAATTATCTTCCGAG  
 AGGCCTCGAGTACACGGTGAAGAATGCACCTGTGAAGACTGCATCAAGAGCAAACCGAAGTTCGACTCT  
 GACCATTGCTTTCCACTCCCAGCTATGGAGGAAGGCGCAACCATTCTGTCAACACGAAAACGAATGACT  
 ATTGCAAGAGCCTGCCAGCTGCTTTGAGTGCTACGGAGATAGAGAAATCAATTTCTGCTAGG

**ACGCGT**ACGCGGCCGCTCGAGCAGAAACTCATCTCAGAAGAGGATCTGGCAGCAAATGATATCCTGGATT  
 ACAAGGATGACGACGATAAGGTTTAA

**Protein Sequence:** >RC208851 protein sequence  
 Red=Cloning site Green=Tags(s)

MLQMAQCQSQNEYFDSLHLHACIPCQLRCSNTPPLTCQRYCNASVTNSVKGTNAILWTCLGLSLIISLAV  
 FVLMFLLRKISSEPLEDEFKNTGSLLGMANIDLEKSRTGDEIILPRGLEYTVEECTCEDCIKSKPKVDS  
 DHCFLPAMEEGATILVTTKTNDYCKSLPAALSATEIEKSISAR

**TRTRPLEQKLI**SEEDLAANDILDYKDDDDKV

**Chromatograms:** [https://cdn.origene.com/chromatograms/mk6035\\_c08.zip](https://cdn.origene.com/chromatograms/mk6035_c08.zip)



Restriction Sites: SgfI-MluI

Cloning Scheme:



ACCN: NM\_001192

ORF Size: 552 bp

OTI Disclaimer: The molecular sequence of this clone aligns with the gene accession number as a point of reference only. However, individual transcript sequences of the same gene can differ through naturally occurring variations (e.g. polymorphisms), each with its own valid existence. This clone is substantially in agreement with the reference, but a complete review of all prevailing variants is recommended prior to use. [More info](#)

OTI Annotation: This clone was engineered to express the complete ORF with an expression tag. Expression varies depending on the nature of the gene.

Components: The ORF clone is ion-exchange column purified and shipped in a 2D barcoded Matrix tube containing 10ug of transfection-ready, dried plasmid DNA (reconstitute with 100 ul of water).

Reconstitution Method:

1. Centrifuge at 5,000xg for 5min.
2. Carefully open the tube and add 100ul of sterile water to dissolve the DNA.
3. Close the tube and incubate for 10 minutes at room temperature.
4. Briefly vortex the tube and then do a quick spin (less than 5000xg) to concentrate the liquid at the bottom.
5. Store the suspended plasmid at -20°C. The DNA is stable for at least one year from date of shipping when stored at -20°C.

Note: Plasmids are not sterile. For experiments where strict sterility is required, filtration with 0.22um filter is required.

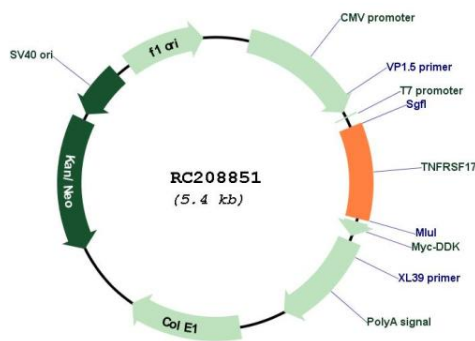
RefSeq: [NM\\_001192.3](#)

RefSeq Size: 994 bp

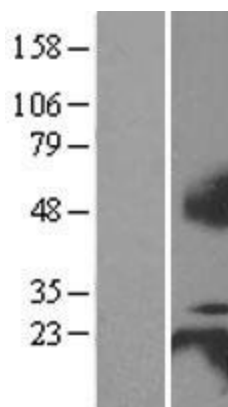
RefSeq ORF: 555 bp

**Locus ID:** 608  
**UniProt ID:** [Q02223](#)  
**Cytogenetics:** 16p13.13  
**Protein Families:** Druggable Genome, Transmembrane  
**Protein Pathways:** Cytokine-cytokine receptor interaction  
**MW:** 20.1 kDa  
**Gene Summary:** The protein encoded by this gene is a member of the TNF-receptor superfamily. This receptor is preferentially expressed in mature B lymphocytes, and may be important for B cell development and autoimmune response. This receptor has been shown to specifically bind to the tumor necrosis factor (ligand) superfamily, member 13b (TNFSF13B/TALL-1/BAFF), and to lead to NF-kappaB and MAPK8/JNK activation. This receptor also binds to various TRAF family members, and thus may transduce signals for cell survival and proliferation. [provided by RefSeq, Jul 2008]

### Product images:



Circular map for RC208851



Western blot validation of overexpression lysate (Cat# [LY400483]) using anti-DDK antibody (Cat# [TA50011-100]). Left: Cell lysates from untransfected HEK293T cells; Right: Cell lysates from HEK293T cells transfected with RC208851 using transfection reagent MegaTran 2.0 (Cat# [TT210002]).