

Product datasheet for **RC208846**

NXPH4 (NM_007224) Human Tagged ORF Clone

Product data:

Product Type:	Expression Plasmids
Product Name:	NXPH4 (NM_007224) Human Tagged ORF Clone
Tag:	Myc-DDK
Symbol:	NXPH4
Synonyms:	NPH4
Mammalian Cell Selection:	Neomycin
Vector:	pCMV6-Entry (PS100001)
E. coli Selection:	Kanamycin (25 ug/mL)
ORF Nucleotide Sequence:	>RC208846 representing NM_007224 Red=Cloning site Blue=ORF Green=Tags(s)

TTTTGTAATACGACTCACTATAGGGCGGCCGGAATTCGTCGACTGGATCCGGTACCGAGGAGATCTGCC
GCC**CGATCGCC**

ATGCGGCTGCTCCCGGAATGGTTCCTTGTCTTTGGCCCGTGGCTCCTTAGGAAGGCCGTCAGTGCC
AGATACCAGAGTCCGGAAGGCCGAGTACCTGGGGCTGCGCCCCGCGCGCCGGAGCGGGTGCCCCCG
CCAGCAGCTCCCAGAGCCAAGGTCTTCGGACGGCCTAGGCGTGGCCGCGCCTGGAGCTGGGCTGGCC
ACCAACCACACGGGGCGCTGGCCGGGCAGGGGCAGCCGGGGCGTTGCCCGCGCAGCGCACCAAGAGGA
AGCCGTCCATCAAGGCGCGCGCCAAAAGATCTTCGGCTGGGGGACTTCTACTTTCCGGGTGCATAC
CCTCAAGTTTTCGCTGCTGGTGACCGGCAAGATCGTGGACCATGTGAACGGTACCTTCAGTGTGATTTT
CGCCACAACCTCGTCCAGCCTGGGCAACCTCAGTGTGAGCATCGTGCCGCCCTCCAAGCGTGTGAGTTCC
GAGGAGTCTGGCTGCCCGGGCTGTCCCCACCCTCTGCAGTCTACGCTCGCCCTGGAGGGGGTGCCTCC
TGGGCTGGGGCCCCCGCTGGGGATGGCAGCAGCAGCGGGGGCCGGGGCTTGGGGGCTCCCTCGGGGGC
GCACTGGCGGGGCCGCTTGGGGCGCGTTGGGAGTGCCTGGGGCCAAAGAGTACGCGCTTTCAATTGCC
ACGTGGAGTATGAGAAGACAAACCGCGCGCAAGCACCACCGTGCCTGTACGACCCGTCGAGGTGTG
CTTCACCGAGCACACGCAGAGCCAGGCCGCTGGCTCTGTGCCAAGCCCTCAAAGTCATCTGTATCTTC
GTCTCTTCTCAGCTTTGACTACAACTGGTGCAGAAGGTGTGCCAGACTATAACTTCCAGAGTGAGC
ACCCCTACTTCGGA

ACGCGTACGCGGCCGCTCGAGCAGAACTCATCTCAGAAGAGGATCTGGCAGCAAATGATATCCTGGATT
ACAAGGATGACGACGATAAGGTTTAA



[View online »](#)

Protein Sequence: >RC208846 representing NM_007224
Red=Cloning site Green=Tags(s)

MRLLPEWFLLLFGPWLLRKAVSAQIPESGRPQYLGLRPAAGAGAPGQQLPEPRSSDGLGVGRAWSWAWP
 TNHTGALARAGAAGALPAQRTKRKPSIKAARAKKIFGWGDFYFRVHTLKF SLLVTGKIVDHVNGTFSVYF
 RHNSSSLGNLSVSI VPPSKRVEFGGVWLPGPVPHPLQSTLALLEGVLPGLGPPLGMAAAAAGPGLGSSLGG
 ALAGPLGGALGVPGAKESRAFNCHEVEYK TNRARKHRPCLYDPSQVCFTEHTQSQAAWLCAKPFKVICIF
 VSFLSFYKLVQK VCPDYNFQSEHPYFG

TRTRPLEQKLISEEDLAANDILDYKDDDDKV

Chromatograms: https://cdn.origene.com/chromatograms/ja1505_e10.zip

Restriction Sites: SgfI-MluI

Cloning Scheme:

Cloning sites used for ORF Shuttling:



* The last codon before the Stop codon of the ORF

ACCN: NM_007224

ORF Size: 924 bp

OTI Disclaimer: The molecular sequence of this clone aligns with the gene accession number as a point of reference only. However, individual transcript sequences of the same gene can differ through naturally occurring variations (e.g. polymorphisms), each with its own valid existence. This clone is substantially in agreement with the reference, but a complete review of all prevailing variants is recommended prior to use. [More info](#)

OTI Annotation: This clone was engineered to express the complete ORF with an expression tag. Expression varies depending on the nature of the gene.

Components: The ORF clone is ion-exchange column purified and shipped in a 2D barcoded Matrix tube containing 10ug of transfection-ready, dried plasmid DNA (reconstitute with 100 ul of water).

Reconstitution Method:

1. Centrifuge at 5,000xg for 5min.
2. Carefully open the tube and add 100ul of sterile water to dissolve the DNA.
3. Close the tube and incubate for 10 minutes at room temperature.
4. Briefly vortex the tube and then do a quick spin (less than 5000xg) to concentrate the liquid at the bottom.
5. Store the suspended plasmid at -20°C. The DNA is stable for at least one year from date of shipping when stored at -20°C.

RefSeq: [NM_007224.3](#), [NP_009155.1](#)

RefSeq Size: 1904 bp

RefSeq ORF: 927 bp

Locus ID: 11247

UniProt ID: [O95158](#)

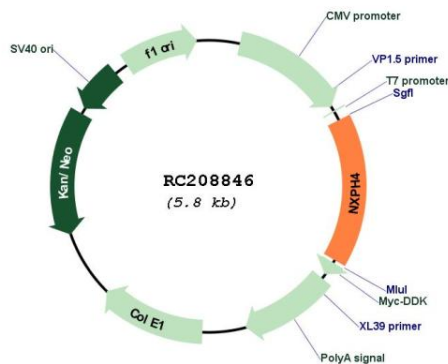
Cytogenetics: 12q13.3

Protein Families: Secreted Protein

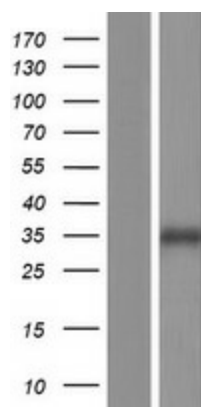
MW: 32.9 kDa

Gene Summary: May be signaling molecules that resemble neuropeptides and that act by binding to alpha-neurexins and possibly other receptors.[UniProtKB/Swiss-Prot Function]

Product images:



Circular map for RC208846



Western blot validation of overexpression lysate (Cat# [LY416101]) using anti-DDK antibody (Cat# [TA50011-100]). Left: Cell lysates from untransfected HEK293T cells; Right: Cell lysates from HEK293T cells transfected with RC208846 using transfection reagent MegaTran 2.0 (Cat# [TT210002]).