

Product datasheet for **RC208843**

FAM161B (NM_152445) Human Tagged ORF Clone

Product data:

Product Type:	Expression Plasmids
Product Name:	FAM161B (NM_152445) Human Tagged ORF Clone
Tag:	Myc-DDK
Symbol:	FAM161B
Synonyms:	C14orf44; c14_5547
Mammalian Cell Selection:	Neomycin
Vector:	pCMV6-Entry (PS100001)
E. coli Selection:	Kanamycin (25 ug/mL)



[View online »](#)

ORF Nucleotide
Sequence:

>RC208843 ORF sequence
Red=Cloning site Blue=ORF Green=Tags(s)

TTTTGTAATACGACTCACTATAGGGCGGCCGGGAATTCGTCGACTGGATCCGGTACCGAGGAGATCTGCC
GCC**CGGATCGCC**

ATGACCGTGGGGAGGCCCTGAGGGAGCCCCGGAGGCGCGGAGGGAGCCGTCAGATATTTCCCCCGAGT
CCTTCGACAGACAGAGGCAGGAGAGGAGCTGTCCGGGATGGGCTGGTTTTGCCAGGGCCAGCAAAC
TGACGAGTTCCTCAGCCAGAGGAGGAGATAGATTCTACTTCTGACTCAACTGGGAGCATTACCAGAAC
TTACAGGAACTGAAGCAGAAAGGGAGATGGTGTCTGTTGGAGTCTCTTTTCAGTCTGACCCAGAGAGTG
ATGAAAACCTCTCTGAAGATGAGGAGGACTGGAGAGTTTCTTCCAAGACAAGGACAGGGGGATGGTGCA
GGTCCAGTGCCCCGAGGCTCTGAGGTGTGGCTCCACAAGGCGCTGCAGCTCCCTGAACAACCTTCCCTCC
AACATTCAGGCTCAGACCCAGCCACCCTCAGGCTCCCGCCCTCCCTCCAGCACAGAAGCGTCAGCT
CCTGGGCATCATCCATTACTGTCCCTCGGCCATTCCGCATGACGCTGCGGAGGCCCGGAAGAAGGCCGA
GTGGCTGGGCTCACCTGCCTCCTTTGAGCAGGAGAGGCAGCGGGCCAGAGGCAGGGTGAGGAAGAGGCC
GAGTGCCACAGGAGTTCGGGGCACAGCCTGTGCCTGCACATGTCTACCTGCCCTCTACCAAGAGATCA
TGGAGCGCAGCGAGGCCCGAAGGCAGGCAGGGATCCAGAAGAGGAAGGAAGTCTCCTCTCTTTTGGAA
GCCCTTACGTTCTGGAGAAGGAGGAGCAGCTAAAGGAAGTGTCTGACAGAGAGACTTGGCAGCCACA
GCTGAAGCAAGATCTCCAAGCAGAAGGCCACCAGAAGGATCCCAAGTCCATTCTGGAGCCAGCCCTTG
GGGATAAACTCCAGGAAGCTGAGCTCTTCAGGAAAATTCGCATCCAAATGAGAGCCCTGGACATGCTCCA
GATGGCCTCTTCCCTATCGCCTCCTTAGTAACCGGGCTAACCCACAGCCCCGCACAGCCACCCGAACC
CAGCAGGAAAAGCTTGGGTTTCTGCACACTAATTTCAGATTCCAGCCTCGGGTGAATCCTGTGGTCCCTG
ACTATGAGGGCCTTTACAAGGCCTTCCAGAGAAGAGCAGCCAAAAGAAGAAACCAAGAGGCCACTCG
CAACAAGCCCTTCTTGCTGAGGACCGCCAACCTGCGCCACCCTCAGCGGCCCTGTGATGCTGCCACCACC
GGAAGGAGGCAGGATTCCCCACAGCCACCAGCTACACCCCTGCCAAGGAGTCGTTCTCTGAGCGCCTTG
CTTCCCTCTCTGCCAACACTCTCCCTGTGCACATCACAGATGCCACCAGGAAGAGGGAATCTGCAGTCAG
AAGTGCCTTGAAGAAAAGAACAAGCAGATGAGAGTATTCAGTGGCTGGAGATACACAAAAAGAAGTCT
CAAGCAATGTCCAAATCTGTGACCTTGGTGCAAAAGCCATGGATCCCCATAAAGCCTGGAGGAAGTGT
TCAAAGCAAAGCTGAAAGAGAACCAGCAATGACCGTAAAAGAGCGAAAGAATAAAGAAAGAACTGGA
GGAATGAAGCAGCGAATACAAACAAGGCCCTATCTCTTTGAACAAGTTGCCAAGGATCTAGCCAAGAAA
GAAGCAGAACAGTGGTATCTAGACACCCTGAAGCAGGCTGGGCTGGAGGAAGACTTTGTGAGAAACAAGG
GTCAAGGCACCCGGGCTGTTCAAGAGAAAAGAGACCAAAATCAAGGATTTCCAGGTTCCAAGAACTAC
AAAACAGCATCAGAGATCCAGAGCAGGGTTTGAAGGATCTCTAGAACAGCCTGCAAGCCCCAGGAAA
GTACTGGAGGAGCTGTCTCATCAGTCACCAGAAAATCTCGTATCACTTGCT

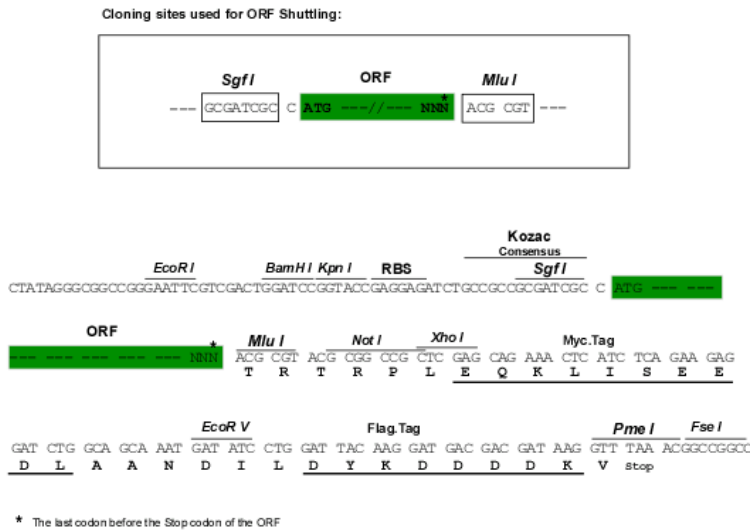
ACGCGTACGCGGCCGCTCGAGCAGAAACTCATCTCAGAAGAGGATCTGGCAGCAAATGATATCCTGGATT
ACAAGGATGACGACGATAAGGTTTAA

Protein Sequence: >RC208843 protein sequence
Red=Cloning site Green=Tags(s)

MTVGRPEGAPGGAEGSRQIFPPESFADTEAGEELSGDGLVLPRAASKLDEFSPVEEIDSTSDSTGSIYQN
 LQELKQKGRWCLLESFLQSDPENLSEDEEDLESFFQDKDRGMVQVQCPQALRCGSTRCCSSLNNLPS
 NIPRPQTQPPSGSRPPSQHRVSVSWASSITVPRPFRMTLREARKKAEWLGSPASFEQERQRAQRQGEEDA
 ECHRQFRAQPVPAHVYLPPLYQEIMERSEARRQAGIQKRKELLLSSLKPFSLFLEKEEQKLEARQRDLAAT
 AEAKISKQKATRRIPKSILEPALGDKLQEAELFRKIRIQMRALDMLQMASSPIASSNRRANQPRTATRT
 QQEKLGLHTNFRFQPRVNPVVPDYEGLYKAFQRRAAKRRETQEATRNPFLLRRTANLRHPQRPCDAATT
 GRRQDSPQPPATPLPRSRLSGLASLANTLPVHITDATRKRESAVRSALKKNADESIIQWLEIHKKKS
 QAMSKSVTLRAKAMPKSLSEEVFKALKENRNDRKRAKEYKKELEEMKQRIQTRPYLFEQVAKDLAKK
 EAEQWYLDLTKQAGLEEDFVRNKQGQTRAVQEKETKIKDFPRFQETTKLSIRDPEQGLEGSLEQPASPRK
 VLEELSHQSPENLVSLA

TRTRPLEQKLISEEDLAANDILDYKDDDDKV

Chromatograms: https://cdn.origene.com/chromatograms/mk6526_c10.zip
Restriction Sites: SgfI-MluI
Cloning Scheme:



ACCN: NM_152445

ORF Size: 1941 bp

OTI Disclaimer: The molecular sequence of this clone aligns with the gene accession number as a point of reference only. However, individual transcript sequences of the same gene can differ through naturally occurring variations (e.g. polymorphisms), each with its own valid existence. This clone is substantially in agreement with the reference, but a complete review of all prevailing variants is recommended prior to use. [More info](#)

OTI Annotation: This clone was engineered to express the complete ORF with an expression tag. Expression varies depending on the nature of the gene.

Components: The ORF clone is ion-exchange column purified and shipped in a 2D barcoded Matrix tube containing 10ug of transfection-ready, dried plasmid DNA (reconstitute with 100 ul of water).

Reconstitution Method:

1. Centrifuge at 5,000xg for 5min.
2. Carefully open the tube and add 100ul of sterile water to dissolve the DNA.
3. Close the tube and incubate for 10 minutes at room temperature.
4. Briefly vortex the tube and then do a quick spin (less than 5000xg) to concentrate the liquid at the bottom.
5. Store the suspended plasmid at -20°C. The DNA is stable for at least one year from date of shipping when stored at -20°C.

RefSeq: [NM_152445.3](#)

RefSeq Size: 3602 bp

RefSeq ORF: 1944 bp

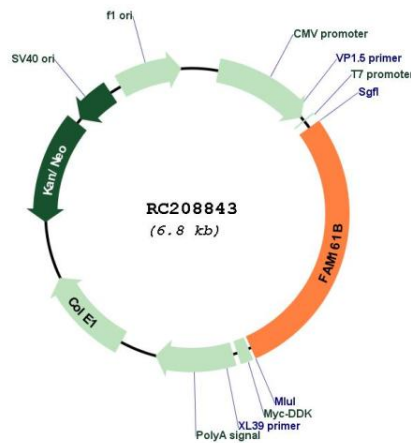
Locus ID: 145483

UniProt ID: [Q96MY7](#)

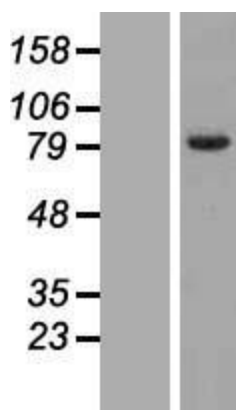
Cytogenetics: 14q24.3

MW: 73.6 kDa

Product images:



Circular map for RC208843



Western blot validation of overexpression lysate (Cat# [LY407483]) using anti-DDK antibody (Cat# [TA50011-100]). Left: Cell lysates from untransfected HEK293T cells; Right: Cell lysates from HEK293T cells transfected with RC208843 using transfection reagent MegaTran 2.0 (Cat# [TT210002]).