

## Product datasheet for **RC208838**

### ZAP70 (NM\_001079) Human Tagged ORF Clone

#### Product data:

Product Type:	Expression Plasmids
Product Name:	ZAP70 (NM_001079) Human Tagged ORF Clone
Tag:	Myc-DDK
Symbol:	ZAP70
Synonyms:	ADMIO2; IMD48; SRK; STCD; STD; TZK; ZAP-70
Mammalian Cell Selection:	Neomycin
Vector:	pCMV6-Entry (PS100001)
E. coli Selection:	Kanamycin (25 ug/mL)



[View online »](#)

**ORF Nucleotide Sequence:**

>RC208838 representing NM\_001079  
 Red=Cloning site Blue=ORF Green=Tags(s)

TTTTGTAATACGACTCACTATAGGGCGGCCGGAATTCGTCGACTGGATCCGGTACCGAGGAGATCTGCC  
 GCC**CGGATCGCC**

ATGCCAGACCCCGCGGCACCTGCCCTTCTTCTACGGCAGCATCTCGGTGCCAGGCCGAGGAGCACC  
 TGAAGCTGGCGGCATGGCGGACGGCTTTCCTGCTGCCAGTGCCTGCGCTCGCTGGCGGCTATGT  
 GCTGTCGCTCGTGACAGTGTGCGCTTCCACCCTTCCCATCGAGCGCCAGCTCAACGGCACCTACGCC  
 ATTGCCGGCGCAAAGCGCACTGTGGACCGGCAGAGCTCTGCGAGTTCTACTCGCGGACCCCGACGGGC  
 TGCCCTGCAACCTGCGCAAGCCGTGCAACCGGCCGTGGGCTCGAGCCGAGCCGGGGTCTTCGACTG  
 CCTGCGAGACGCCATGGTGCCTGACTACGTGCGCCAGAGCTGGAAGCTGGAGGGCGAGGCCCTGGAGCAG  
 GCCATCATCAGCCAGGCCCGCAGGTGGAGAAGCTCATTGCTACGACGGCCACGAGCGGATGCCCTGGT  
 ACCACAGCAGCCTGACCGGTGAGGAGGCCGAGCGCAAACCTTACTCTGGGGCGCAGCCGACGGCAAGTT  
 CCTGCTGAGGCCCGGAAGGAGCAGGGCACATACGCCCTGTCCCTCATCTATGGGAAGACGGTGTACCAC  
 TACCTCATCAGCCAAGACAAGGCCGGCAAGTACTGCATTCGAGGGCACCAAGTTTGACACGCTCTGGC  
 AGCTGGTGGAGTATCTGAAGCTGAAGGCGGACGGGCTCATCTACTGCCTGAAGGAGGCTGCCCAACAG  
 CAGTGCCAGCAACGCCTCAGGGGCTGCTGCTCCACACTCCAGCCACCCATCCACGTTGACTCATCT  
 CAGAGACGAATCGACACCCTCAACTCAGATGGATACACCCTGAGCCAGCAGCATAACGTCGCCAGACA  
 AACCGCGCCGATGCCCATGGACACGAGCGTGTATGAGAGCCCTACAGCGACCCAGAGGAGCTCAAGGA  
 CAAGAAGCTTCTCTGAAGCGGATAACCTCCTCATAGCTGACATTGAACTTGGCTGCGGCAACTTTGGC  
 TCAGTGCAGGCGGTGATCCGCATGCGCAAGAAGCAGATCGAGTGGCCATCAAGGTGCTGAAGCAGG  
 GCACGGAGAAGGCAGACACGGAAGAGATGATGCGCGAGGCGCAGATCATGCACCAGCTGGACAACCCCTA  
 CATCGTGGGCTCATTGGCGCTGCGCAGGCCGAGGCCCTCATGCTGGTCAATGGAGATGGCTGGGGCGGG  
 CCGCTGCACAAGTTCTGGTGGCAAGAGGAGGAGATCCCTGTGAGCAATGTGGCCGAGCTGCTGCACC  
 AGGTGTCCATGGGGATGAAGTACCTGGAGGAGAAGAACTTTGTGCACCGTGACCTGGCGCCCGCAACGT  
 CCTGCTGGTTAACCGGCACTACGCCAAGATCAGCGACTTTGGCTCTCCAAGCACTGGGTGCCGACGAC  
 AGCTACTACACTGCCCGCTCAGCAGGGAAGTGGCCGCTCAAGTGGTACGCACCCGAATGCATCAACTTC  
 GCAAGTTCTCCAGCCGACGCGATGTCTGGAGCTATGGGGTACCATGTGGGAGGCCTTGTCTACGGCCA  
 GAAGCCCTACAAGAAGATGAAAGGGCCGAGGTGATGGCCTTCATCGAGCAGGGCAAGCGGATGGAATGC  
 CCACCAGAGTGTCCACCCGAAGTACGCACTCATGAGTACTGCTGGATCTACAAGTGGGAGGATCGCC  
 CCGACTTCTGACCGTGGAGCAGCGCATGCGAGCCTGTTACTACAGCCTGCCAGCAAGGTGGAAGGGCC  
 CCCAGGCAGCACACAGAAGGCTGAGGCTGCCTGTGCC

AG**CGGACCG**ACGCGTACGCGGCCGCTCGAGCAGAACTCATCTCAGAAGAGGATCTGGCAGCAAATGATATCC  
 TGGATTACAAGGATGACGACGATAAGGTTTAA

**Protein Sequence:**

>RC208838 representing NM\_001079  
 Red=Cloning site Green=Tags(s)

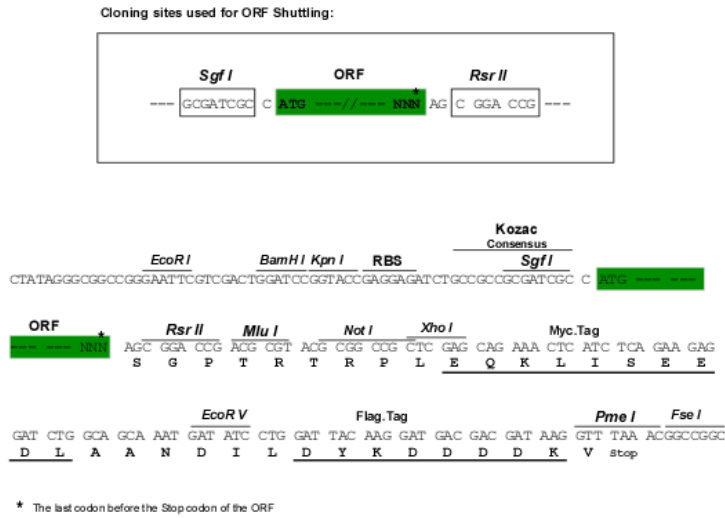
MPDPA AHL PFFYGSISR AEAEHLKLAGMADGLFLLRQCLRSLGGYVLSLVHDVRFHHPPIERQLNGTYA  
 IAGGKAHCGPAELCEFYSRDPDGLPCNLRKPCNRPSGLEPQPGVDFCLRDAMVRDYVRQTWKLEGEALEQ  
 AIIISQAPQVEKLIATTAHERMPWYHSSLTREEAERKLYSGAQTGKFLLRPRKEQGTYSLSIYKTVYH  
 YLISQDKAGKYCIPEGTKFDLWQLVEYLKADGLIYCLKEACPNSASNASGAAAPTLPAPSTLTHP  
 QRRIDTLNSDGYTPEPARITSPDKPRPMPMDTSVYESPYSPEELKDKKFLKRDNLLIADIELGCGNFG  
 SVRQGVYRMRKQIDVAIKVLKQTEKADTEEMREAQIMHQLDNPYIVRLIGVCQAEALMLVMEMAGGG  
 PLHKFLVGKREEIPVSNVAELLHQVSMGMKYLEEKNFVHRDLAARNVLLVNRHYAKISDFGLSKALGADD  
 SYYTARSAGKWPLKWAYPECINFRKFSRSDVWSYGVMTMWEALSYGQKPYKMKGPEVMAFIEQGRMEC  
 PPECPPELYALMSDCWIYKWEDRPDFLTVQRMRACYSLASKVEGPPGSTQKAEAAACA

**SGP**TRTRRLEQKLI SEEDLAANDILDYKDDDDKVV

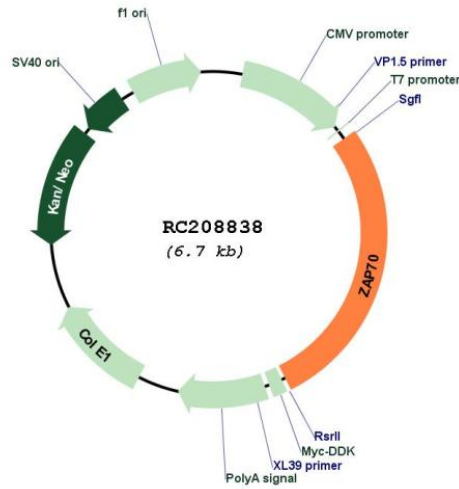
Chromatograms: [https://cdn.origene.com/chromatograms/mg4141\\_h07.zip](https://cdn.origene.com/chromatograms/mg4141_h07.zip)

Restriction Sites: SgfI-RsrII

Cloning Scheme:



Plasmid Map:



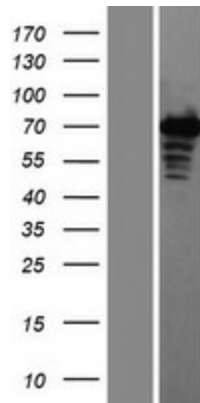
ACCN: NM\_001079

ORF Size: 1857 bp

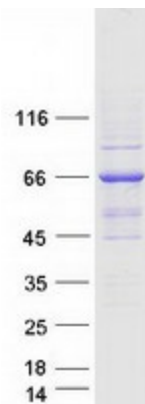
<b>OTI Disclaimer:</b>	<p>Due to the inherent nature of this plasmid, standard methods to replicate additional amounts of DNA in E. coli are highly likely to result in mutations and/or rearrangements. Therefore, OriGene does not guarantee the capability to replicate this plasmid DNA. Additional amounts of DNA can be purchased from OriGene with batch-specific, full-sequence verification at a reduced cost. Please contact our customer care team at <a href="mailto:custsupport@origene.com">custsupport@origene.com</a> or by calling 301.340.3188 option 3 for pricing and delivery.</p> <p>The molecular sequence of this clone aligns with the gene accession number as a point of reference only. However, individual transcript sequences of the same gene can differ through naturally occurring variations (e.g. polymorphisms), each with its own valid existence. This clone is substantially in agreement with the reference, but a complete review of all prevailing variants is recommended prior to use. <a href="#">More info</a></p>
<b>OTI Annotation:</b>	This clone was engineered to express the complete ORF with an expression tag. Expression varies depending on the nature of the gene.
<b>Components:</b>	The ORF clone is ion-exchange column purified and shipped in a 2D barcoded Matrix tube containing 10ug of transfection-ready, dried plasmid DNA (reconstitute with 100 ul of water).
<b>Reconstitution Method:</b>	<ol style="list-style-type: none"> <li>1. Centrifuge at 5,000xg for 5min.</li> <li>2. Carefully open the tube and add 100ul of sterile water to dissolve the DNA.</li> <li>3. Close the tube and incubate for 10 minutes at room temperature.</li> <li>4. Briefly vortex the tube and then do a quick spin (less than 5000xg) to concentrate the liquid at the bottom.</li> <li>5. Store the suspended plasmid at -20°C. The DNA is stable for at least one year from date of shipping when stored at -20°C.</li> </ol>
<b>RefSeq:</b>	<a href="#">NM_001079.4</a>
<b>RefSeq Size:</b>	2450 bp
<b>RefSeq ORF:</b>	1860 bp
<b>Locus ID:</b>	7535
<b>UniProt ID:</b>	<a href="#">P43403</a>
<b>Cytogenetics:</b>	2q11.2
<b>Protein Families:</b>	Druggable Genome, Protein Kinase
<b>Protein Pathways:</b>	Natural killer cell mediated cytotoxicity, Primary immunodeficiency, T cell receptor signaling pathway
<b>MW:</b>	69.7 kDa

**Gene Summary:**

This gene encodes an enzyme belonging to the protein tyrosine kinase family, and it plays a role in T-cell development and lymphocyte activation. This enzyme, which is phosphorylated on tyrosine residues upon T-cell antigen receptor (TCR) stimulation, functions in the initial step of TCR-mediated signal transduction in combination with the Src family kinases, Lck and Fyn. This enzyme is also essential for thymocyte development. Mutations in this gene cause selective T-cell defect, a severe combined immunodeficiency disease characterized by a selective absence of CD8-positive T-cells. Two transcript variants that encode different isoforms have been found for this gene. [provided by RefSeq, Jul 2008]

**Product images:**

Western blot validation of overexpression lysate (Cat# [LY421504]) using anti-DDK antibody (Cat# [TA50011-100]). Left: Cell lysates from untransfected HEK293T cells; Right: Cell lysates from HEK293T cells transfected with RC208838 using transfection reagent MegaTran 2.0 (Cat# [TT210002]).



Coomassie blue staining of purified ZAP70 protein (Cat# [TP308838]). The protein was produced from HEK293T cells transfected with ZAP70 cDNA clone (Cat# RC208838) using MegaTran 2.0 (Cat# [TT210002]).