

## Product datasheet for **RC208837**

### **MTERFD2 (MTERF4) (NM\_182501) Human Tagged ORF Clone**

#### Product data:

Product Type:	Expression Plasmids
Product Name:	MTERFD2 (MTERF4) (NM_182501) Human Tagged ORF Clone
Tag:	Myc-DDK
Symbol:	MTERFD2
Synonyms:	MTERFD2
Mammalian Cell Selection:	Neomycin
Vector:	pCMV6-Entry (PS100001)
E. coli Selection:	Kanamycin (25 ug/mL)
ORF Nucleotide Sequence:	>RC208837 ORF sequence Red=Cloning site Blue=ORF Green=Tags(s)

TTTTGTAATACGACTCACTATAGGGCGGCCGGAATTCGTCGACTGGATCCGGTACCGAGGAGATCTGCC  
GCC**CGATCGCC**

ATGGCTGCGTTTCGGCCGTCAGGTCCTTGATTGGCACCGCCTGATCCCCCTCACCTGGGCCTGTATGGCTA  
GGCAGACTCCTCATCTTGGAGAACAGAGAAGGACGACAGCTTCTTTGTTGCGCAAAGTACTACAGCCTC  
CAATGGAGGGGTCATTGAGGAGTTATCTTGTGTTAGATCCAATACTATGTGCAGGAACAGAGTGCAGG  
AGGAATCTTGTTCAGTGCCTCCTTGAGAAGCAGGGGACTCCTGTGGTACAAGGGTCTTGGAGCTAGAGA  
GGGTCATGAGTTCCTCCTGGACATGGGTTTCAGCAATGCCCATATTAATGAATTGCTCAGTGTACGGCG  
AGGTGCCAGTCTCAACAGTTGCTGGACATCATTTCAGAATTTATCTCTTGGGTCTGAATCCAGAGCCT  
GTGTGTGTGGTCTTGAAGAAAAGTCCCCAGTTATTGAAACTGCCTATTATGCAAATGAGGAAGCGCTCCA  
GTTACCTGCAAAAAGCTTGGGCTTGGAGAAGGAAATTAAGAGGGTGCTTTACTGTTGCCCTGAAATTTT  
CACCATGCGCCAGCAGGACATTAACGACACTGTCAGGCTTCTCAAGGAGAAGTGCCTTTTACGGTACAG  
CAAGTCACCAAGATTTTGCACAGTTGCCCTCTGTTCTTCGAGAGGACCTGGGTCAACTGGAATACAAGT  
TTCAGTATGCATACTTCAGGATGGGAATTAAGCATCCAGACATTGTAAGAGTGAAGTACTGTCAGTATTC  
ACTAACCAAGATTAAGCAGAGACACATTTACCTGGAGCGCCTGGGACGGTACCAAACCCCTGATAAGAAG  
GGCAGACACAGATCCCTAACCCATTGCTCAAGGACATTCTCAGAGTTTCAGAAGCTGAGTTTTTGGCCA  
GGACAGCCGTACTTCTGTTGAGGAGTTTCAAGTTTTTAAGAAGCTCCTGGCTCGGGAGGAGGAGGATC  
TGAGAGCAGCACATCTGATGACAAAAGGCAAGTCTGGATGAGGATGAGGATGACGATGATGAGGAGGAC  
AATGATGAGGATGACAATGATGAGGATGACGATGATGAGGACGACGACGAGGCGGAGGACAATGATGAGG  
ATGAGGACGACGACGAGGAGGAA

**ACGCGT**ACGCGGCCGCTCGAGCAGAAACTCATCTCAGAAGAGGATCTGGCAGCAAATGATATCCTGGATT  
ACAAGGATGACGACGATAAGGTTTAA



[View online >](#)

**Protein Sequence:** >RC208837 protein sequence  
Red=Cloning site Green=Tags(s)

MAAFGRQVLDWHRLIPLTWACMARQTPHLGEQRRTTASLLRKLTTASNGGVIIEELSCVRSNNYVQEPECR  
RNLVQCILLEKQGTPVVQGSLELERVMSSLLDMGFSNAHINELLSVRRGASLQQLLDIIEFILLGLNPEP  
VCVVLLKSPQLLKLPIPMQMRKRSSYLQKLGLEGKLRVLYCCPEIFTMRQDINDTVRLKKEKCLFTVQ  
QVTIKLHSCPSVLREDLGQLEYKFQYAYFRMGIKHPDIVKSEYLQYSLTKIKQRHIYLERLGRYQTPDKK  
GQTQIPNPLLKDILRVSEAEFLARTARTSVVEEFQVFKLLAREEEEESESSTSDDKRASLDEDEDDEEED  
NDEDDNDEDDDDDEDDDEAEDNDEDEDDDEE

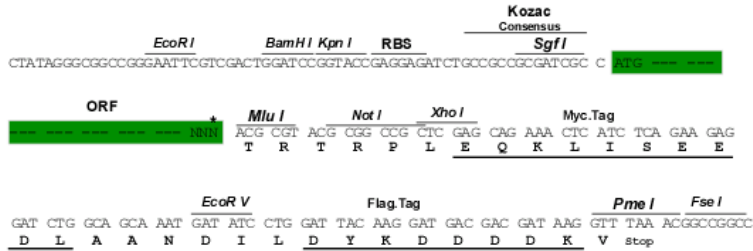
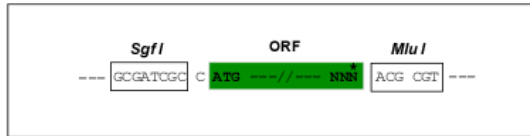
TRTRPLEQKLISEEDLAANDILDYKDDDDKV

**Chromatograms:** [https://cdn.origene.com/chromatograms/mk6526\\_c03.zip](https://cdn.origene.com/chromatograms/mk6526_c03.zip)

**Restriction Sites:** SgfI-MluI

**Cloning Scheme:**

Cloning sites used for ORF Shuttling:



\* The last codon before the Stop codon of the ORF

**ACCN:** NM\_182501

**ORF Size:** 1143 bp

**OTI Disclaimer:** The molecular sequence of this clone aligns with the gene accession number as a point of reference only. However, individual transcript sequences of the same gene can differ through naturally occurring variations (e.g. polymorphisms), each with its own valid existence. This clone is substantially in agreement with the reference, but a complete review of all prevailing variants is recommended prior to use. [More info](#)

**OTI Annotation:** This clone was engineered to express the complete ORF with an expression tag. Expression varies depending on the nature of the gene.

**Components:** The ORF clone is ion-exchange column purified and shipped in a 2D barcoded Matrix tube containing 10ug of transfection-ready, dried plasmid DNA (reconstitute with 100 ul of water).

- Reconstitution Method:**
1. Centrifuge at 5,000xg for 5min.
  2. Carefully open the tube and add 100ul of sterile water to dissolve the DNA.
  3. Close the tube and incubate for 10 minutes at room temperature.
  4. Briefly vortex the tube and then do a quick spin (less than 5000xg) to concentrate the liquid at the bottom.
  5. Store the suspended plasmid at -20°C. The DNA is stable for at least one year from date of shipping when stored at -20°C.

**RefSeq:** [NM\\_182501.4](#)

**RefSeq Size:** 1657 bp

**RefSeq ORF:** 1146 bp

**Locus ID:** 130916

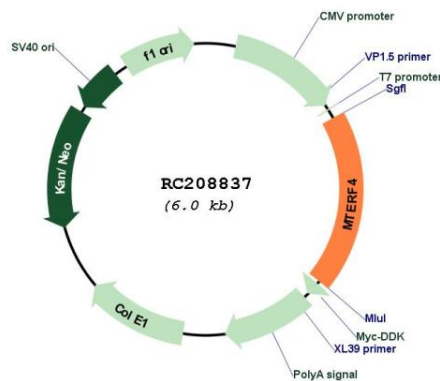
**UniProt ID:** [Q7Z6M4](#)

**Cytogenetics:** 2q37.3

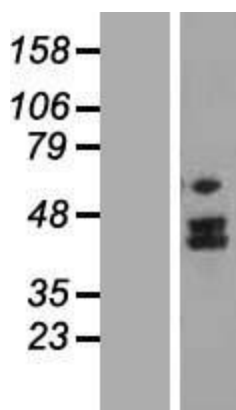
**MW:** 44 kDa

**Gene Summary:** Regulator of mitochondrial ribosome biogenesis and translation. Binds to mitochondrial ribosomal RNAs 16S, 12S and 7S and targets NSUN4 RNA methyltransferase to the mitochondrial large ribosomal subunit (39S).[UniProtKB/Swiss-Prot Function]

### Product images:



Circular map for RC208837



Western blot validation of overexpression lysate (Cat# [LY405521]) using anti-DDK antibody (Cat# [TA50011-100]). Left: Cell lysates from untransfected HEK293T cells; Right: Cell lysates from HEK293T cells transfected with RC208837 using transfection reagent MegaTran 2.0 (Cat# [TT210002]).