

Product datasheet for **RC208831**

FOXQ1 (NM_033260) Human Tagged ORF Clone

Product data:

Product Type: Expression Plasmids
 Product Name: FOXQ1 (NM_033260) Human Tagged ORF Clone
 Tag: Myc-DDK
 Symbol: FOXQ1
 Synonyms: HFH1
 Mammalian Cell Selection: Neomycin
 Vector: pCMV6-Entry (PS100001)
 E. coli Selection: Kanamycin (25 ug/mL)
 ORF Nucleotide Sequence: >RC208831 representing NM_033260
 Red=Cloning site Blue=ORF Green=Tags(s)

TTTTGTAATACGACTCACTATAGGGCGGCCGGAATTCGTCGACTGGATCCGGTACCGAGGAGATCTGCC
 GCC**CGATCGCC**

ATGAAGTTGGAGGTGTTTCGTCCTCGCGCGGCCACGGGGACAAGCAGGGCAGTGACCTGGAGGGCGCGG
 GCGGCAGCGACGCGCCGTCCCCGCTGTCGGCGGGGAGACGACTCCCTGGGCTCAGATGGGACTGCGC
 GGCCAACAGCCCCGCGCGGGCGGGCCAGAGATCCGCCGGGCGACGGCGAACAGAGTGCAGGGAGGC
 GGGCCGGGCGGAGGAGGCGATCCCGCAGCAGCTGCTGCAGCGGTGGTGGCGGAGGGCGCGGAGGCCG
 GGGCGGGCGGGCCAGGCGGGCGGGCGGGGAGCGGCGAGGGTGCACGCAGCAAGCCATATACGCGGCG
 GCCAAGCCCCCTACTCGTACATCGCGCTCATCGCCATGGCCATCCGCGACTCGGCGGGCGGGCGCTTG
 ACGCTGGCGGAGATCAACGAGTACCTCATGGGCAAGTTCCTTTTCCGCGGCAGCTACACGGGCTGGC
 GAACTCCGTGCGCCACAACCTTTCGCTCAACGACTGCTTCGTAAGGTGCTGCGCGACCCCTCGCGGCC
 CTGGGGCAAGGACAACACTACTGGATGCTCAACCCCAACAGCGAGTACACCTTCGCCGACGGGGTCTCCGC
 CGCCGCGCAAGCGCCTCAGCCACCGCGCGCCGGTCCCCGCGCCCGGGCTGCGGCCGAGGAGGCCCCGG
 GCCTCCCCGCGCCCCGCGCCCGCGCCCGCCCGCCCGCCCGCCCGCCCGCCCGCCCGCCCGCCCGCA
 GGAGGAGCGCGCCAGCCCCGCGGCAAGTTCACAGCTCCTTCGCATCGACAGCATCCTGCGCAAGCCC
 TTCCGACGCGCCGCTCAGGGACAGGCCCCCGGGACGAGCTTCAGTGGGGCGCGCCCTGCCCGC
 CGCTGCCCGGTTCCCCGCGCTCCTCCCCGCGGGCCCTGCAGGGCCCTGCTGCCGCTCTGCGCGTACGG
 CGCGGGGAGCCGCGCGGCTGGGCGCGCGGAGGCCAGGTGCCACCGACCGCGCCGCCCTCCTGCTT
 GCACCTCTCCCGCGGGCCCGCCCAAGCCACTCCGAGGCCCGGGCGCGCGCGCGCACCTGTACT
 GCCCCTGCGGCTGCCCGCAGCCCTGCAGGCGGCCCTCAGTCCGCCGCCCTGGCCGCACCTGCCGTACCC
 GGTGGAGACGCTCCTAGCC

ACGCGTACGCGGCCGCTCGAGCAGAACTCATCTCAGAAGAGGATCTGGCAGCAATGATATCCTGGATT
 ACAAGGATGACGACGATAAGGTTTAA



[View online >](#)

Protein Sequence: >RC208831 representing NM_033260
Red=Cloning site Green=Tags(s)

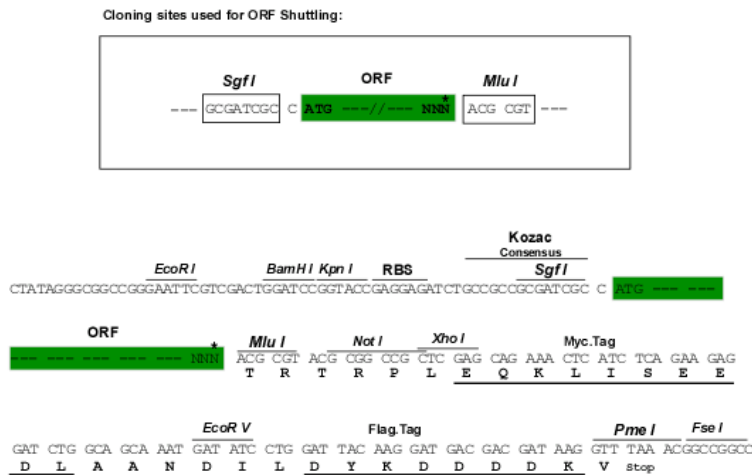
MKLEVFVPRAAHGDKQGS DLE GAGGSDAPSLSAAGDDSLGSDGDCAANSPAAGGGARDPPGDGEQSAGG
 GPGAE EAI PAAAAA VVAEGAEAGAAGPGAGGAGSGEGARSKPYTRRPKPPYSYIALIAMAIRDSAGGRL
 TLAEINEYLMGKFPFFRGSYTGWRNSVRHNSLND CFVKVLRDPSRPWGKDNWMLNPSEYTFADGVFR
 RRRKRLSHRAPVPAPGLRPEEAPGLPAAPPPAPAAPASPRMRS PARQEERASPAKGFSSSFAIDSILRKP
 FRSRRLRDTAPGTTLQWGAAPCPPLPAFPALLPAAPCRALLPLCAYGAGEPARLGAREAEVPPTAPPLLL
 APLPAAAPAKPLRGPAAGGAHL YCPLRLPAALQAASVRRPGPHLPYPVETLLA

TRTRPLEQKLISEEDLAANDILDYKDDDDKV

Chromatograms: https://cdn.origene.com/chromatograms/mg3010_h02.zip

Restriction Sites: SgfI-MluI

Cloning Scheme:



* The last codon before the Stop codon of the ORF

ACCN: NM_033260

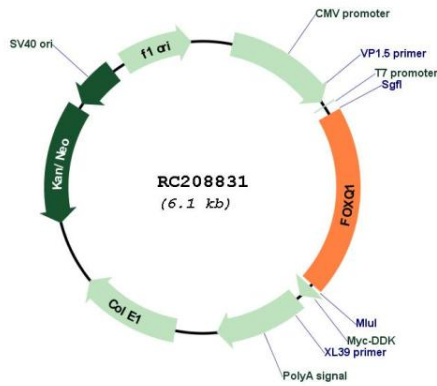
ORF Size: 1209 bp

OTI Disclaimer: Due to the inherent nature of this plasmid, standard methods to replicate additional amounts of DNA in E. coli are highly likely to result in mutations and/or rearrangements. Therefore, OriGene does not guarantee the capability to replicate this plasmid DNA. Additional amounts of DNA can be purchased from OriGene with batch-specific, full-sequence verification at a reduced cost. Please contact our customer care team at custsupport@origene.com or by calling 301.340.3188 option 3 for pricing and delivery.

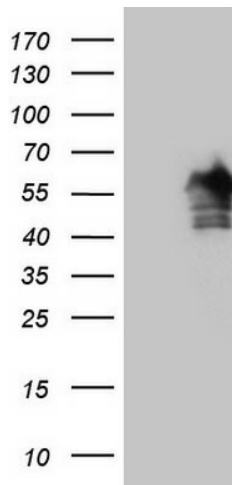
The molecular sequence of this clone aligns with the gene accession number as a point of reference only. However, individual transcript sequences of the same gene can differ through naturally occurring variations (e.g. polymorphisms), each with its own valid existence. This clone is substantially in agreement with the reference, but a complete review of all prevailing variants is recommended prior to use. [More info](#)

OTI Annotation:	This clone was engineered to express the complete ORF with an expression tag. Expression varies depending on the nature of the gene.
Components:	The ORF clone is ion-exchange column purified and shipped in a 2D barcoded Matrix tube containing 10ug of transfection-ready, dried plasmid DNA (reconstitute with 100 ul of water).
Reconstitution Method:	<ol style="list-style-type: none">1. Centrifuge at 5,000xg for 5min.2. Carefully open the tube and add 100ul of sterile water to dissolve the DNA.3. Close the tube and incubate for 10 minutes at room temperature.4. Briefly vortex the tube and then do a quick spin (less than 5000xg) to concentrate the liquid at the bottom.5. Store the suspended plasmid at -20°C. The DNA is stable for at least one year from date of shipping when stored at -20°C.
Note:	Plasmids are not sterile. For experiments where strict sterility is required, filtration with 0.22um filter is required.
RefSeq:	NM_033260.2 , NP_150285.2
RefSeq Size:	2322 bp
RefSeq ORF:	1212 bp
Locus ID:	94234
UniProt ID:	Q9C009
Cytogenetics:	6p25.3
Protein Families:	Transcription Factors
MW:	41.3 kDa
Gene Summary:	FOXQ1 is a member of the FOX gene family, which is characterized by a conserved 110-amino acid DNA-binding motif called the forkhead or winged helix domain. FOX genes are involved in embryonic development, cell cycle regulation, tissue-specific gene expression, cell signaling, and tumorigenesis (Bieller et al., 2001 [PubMed 11747606]).[supplied by OMIM, May 2009]

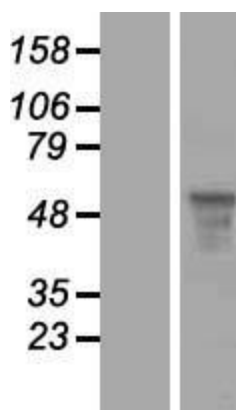
Product images:



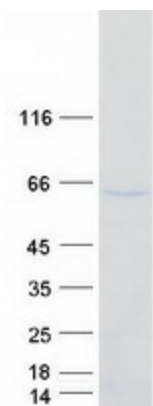
Circular map for RC208831



HEK293T cells were transfected with the pCMV6-ENTRY control (Cat# [PS100001], Left lane) or pCMV6-ENTRY FOXQ1 (Cat# RC208831, Right lane) cDNA for 48 hrs and lysed. Equivalent amounts of cell lysates (5 ug per lane) were separated by SDS-PAGE and immunoblotted with anti-FOXQ1 (Cat# [TA808148])(1:2000). Positive lysates [LY409634] (100ug) and [LC409634] (20ug) can be purchased separately from OriGene.



Western blot validation of overexpression lysate (Cat# [LY409634]) using anti-DDK antibody (Cat# [TA50011-100]). Left: Cell lysates from untransfected HEK293T cells; Right: Cell lysates from HEK293T cells transfected with RC208831 using transfection reagent MegaTran 2.0 (Cat# [TT210002]).



Coomassie blue staining of purified FOXQ1 protein (Cat# [TP308831]). The protein was produced from HEK293T cells transfected with FOXQ1 cDNA clone (Cat# RC208831) using MegaTran 2.0 (Cat# [TT210002]).