

Product datasheet for **RC208827**

TMED4 (NM_182547) Human Tagged ORF Clone

Product data:

Product Type: Expression Plasmids
Product Name: TMED4 (NM_182547) Human Tagged ORF Clone
Tag: Myc-DDK
Symbol: TMED4
Synonyms: ERS25; GMP25iso; HNFLF; p24a3; p24alpha3
Mammalian Cell Selection: Neomycin
Vector: pCMV6-Entry (PS100001)
E. coli Selection: Kanamycin (25 ug/mL)
ORF Nucleotide Sequence: >RC208827 representing NM_182547.
Blue=ORF Red=Cloning site Green=Tag(s)

```
GCTCGTTTAGTGAACCGTCAGAATTTTGTAAACGACTCACTATAGGGCGGCCGGGAATTCGTGCGACTG
GATCCGGTACCGAGGAGATCTGCCGCCGCGATCGCC
ATGGCAGGTGTCGGGGCTGGGCCTCTGCGGGCGATGGGGCGCAGGCCCTGCTGCTTCTCGCGCTGTGC
GCCACAGGCGCCAGGGGCTCTACTTCCACATCGGCGAGACCGAGAAGCGCTGTTTCATCGAGGAAATC
CCCACGAGACCATGGTCATCGGCAACTATCGTACCCAGATGTGGGATAAGCAGAAGGAGGTCTTCTG
CCCTCGACCCCTGGCCTGGGCATGCACGTGGAAGTGAAGGACCCCGACGCAAGGTGGTGTCTCCCG
CAGTACGGCTCGGAGGGCCGCTTACGTTACCTCCCACAGCCCGGTGACCATCAAATCTGTCTGCAC
TCCAATTTACCAGGATGGCTCTTTCGCTGGTGGCAAACCTGCGGGTGCATCTCGACATCCAGTTGGG
GAGCATGCCAACAACTACCCTGAGATTGCTGCAAAGATAAGCTGACGGAGCTACAGCTCCGCGCCCGC
CAGTTGCTTGATCAGGTGGAACAGATTCAGAAGGAGCAGGATTACCAAAGGTATCGTGAAGAGCGCTTC
CGACTGACGAGCGAGAGCACCAACCAGAGGGTCTATGGTGGTCCATTGCTCAGACTGTCTCCTCATC
CTCACTGGCATCTGGCAGATGCGTCACCTCAAGAGCTTCTTTGAGGCCAAGAAGCTGGTG
ACGCGTACGCGGCCGCTCGAGCAGAAACTCATCTCAGAAGAGGATCTGGCAGCAAATGATATCCTGGAT
TACAAGGATGACGACGATAAGGTTTAAACGGCCCGC
```

Protein Sequence: >Peptide sequence encoded by RC208827
Blue=ORF Red=Cloning site Green=Tag(s)

```
MAGVGAGPLRAMGRQALLLLALCATGAQGLYFHIGETEKRCFIEEIPDETMVIGNYRTQMWDKQKEVFL
PSTPGLGMHVEVKDPDGKVVLSRQYGEGRFTFTSHTPGDHQICLHSNSTRMALFAGGKLRVHLDIQVG
EHANNYPEIAAKDKLTELQLRARQLLDQVEIQKEQDYQRYREERFRLTSESTNQRVLWWSIAQTVILI
LTGIWQMRHLKSFFEAKKLV
TRTRPLEQKLISEEDLAANDILDYKDDDDKV
```

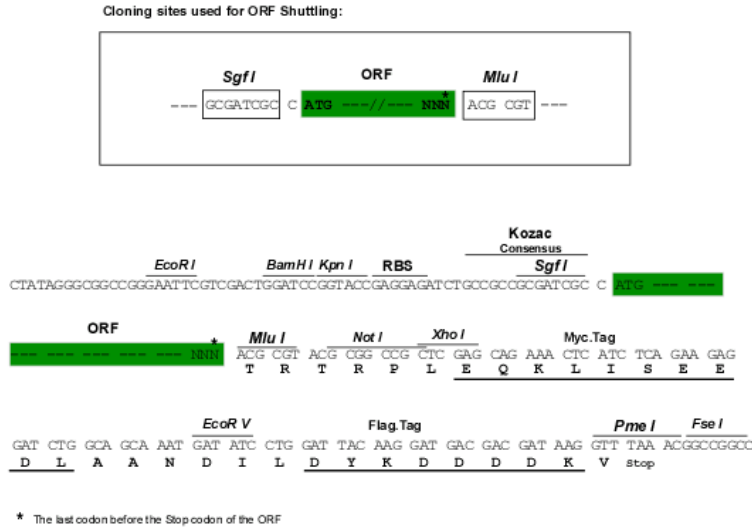
Chromatograms: https://cdn.origene.com/chromatograms/mk6772_a09.zip



[View online »](#)

Restriction Sites: SgfI-MluI

Cloning Scheme:



ACCN: NM_182547

ORF Size: 681 bp

OTI Disclaimer: The molecular sequence of this clone aligns with the gene accession number as a point of reference only. However, individual transcript sequences of the same gene can differ through naturally occurring variations (e.g. polymorphisms), each with its own valid existence. This clone is substantially in agreement with the reference, but a complete review of all prevailing variants is recommended prior to use. [More info](#)

OTI Annotation: This clone was engineered to express the complete ORF with an expression tag. Expression varies depending on the nature of the gene.

Components: The ORF clone is ion-exchange column purified and shipped in a 2D barcoded Matrix tube containing 10ug of transfection-ready, dried plasmid DNA (reconstitute with 100 ul of water).

Reconstitution Method:

1. Centrifuge at 5,000xg for 5min.
2. Carefully open the tube and add 100ul of sterile water to dissolve the DNA.
3. Close the tube and incubate for 10 minutes at room temperature.
4. Briefly vortex the tube and then do a quick spin (less than 5000xg) to concentrate the liquid at the bottom.
5. Store the suspended plasmid at -20°C. The DNA is stable for at least one year from date of shipping when stored at -20°C.

RefSeq: [NM_182547.4](#)

RefSeq Size: 1048 bp

RefSeq ORF: 684 bp

Locus ID: 222068

UniProt ID: [Q7Z7H5](#)

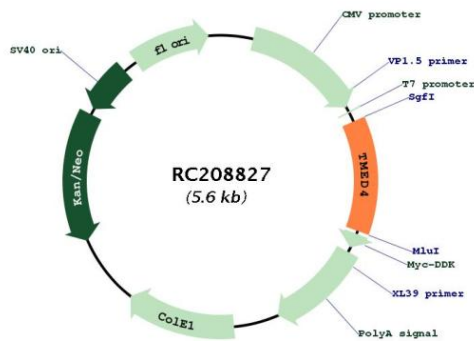
Cytogenetics: 7p13

Protein Families: Transmembrane

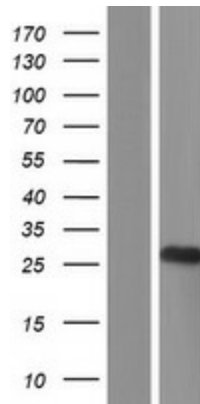
MW: 25.9 kDa

Gene Summary: Involved in vesicular protein trafficking, mainly in the early secretory pathway. targeting. Involved in the maintenance of the Golgi apparatus. Appears to play a role in the biosynthesis of secreted cargo including processing. Involved in endoplasmic reticulum stress response. May play a role in the regulation of heat-shock response and apoptosis (By similarity). [UniProtKB/Swiss-Prot Function]

Product images:



Circular map for RC208827



Western blot validation of overexpression lysate (Cat# [LY405499]) using anti-DDK antibody (Cat# [TA50011-100]). Left: Cell lysates from untransfected HEK293T cells; Right: Cell lysates from HEK293T cells transfected with RC208827 using transfection reagent MegaTran 2.0 (Cat# [TT210002]).