

## Product datasheet for **RC208825**

### **ARHGAP30 (NM\_181720) Human Tagged ORF Clone**

#### **Product data:**

Product Type:	Expression Plasmids
Product Name:	ARHGAP30 (NM_181720) Human Tagged ORF Clone
Tag:	Myc-DDK
Symbol:	ARHGAP30
Mammalian Cell Selection:	Neomycin
Vector:	pCMV6-Entry (PS100001)
E. coli Selection:	Kanamycin (25 ug/mL)



[View online »](#)

**ORF Nucleotide Sequence:**

>RC208825 representing NM\_181720  
 Red=Cloning site Blue=ORF Green=Tags(s)

CTATAGGGCGGCCGGGAATTCGTCGACTGGATCCGGTACCGAGGAGATCTGCCGCCGCGATCGCCGGCGC  
 GCC

ATGAAGTCTCGGCAGAAAGGAAAGAAGAAGGGCAGCGCAAAGGAGCGGGTTTTGGTGGCGACTTGCAGG  
 AGCACCTGCAGCACTCAGGCCAGGAGGTGCCCCAGGTGCTAAAGAGCTGTGCAGAATTTGTGGAGGAGTA  
 TGGAGTGGTGGATGGGATCTACCGCCTCTCAGGGGTCTCCTCCAACATCCAGAAGCTTCGCAGGAATTG  
 GAGTCAGAGCGGAAGCCAGACCTGCGTCGGGATGTTTACCTCCAAGACATTCAGTGCCTCTCCTCCCTGT  
 GCAAGGCCTATTTAGAGAACTGCCGGATCCCCTGCTCACTTACCGGCTCTATGACAAGTTTGTGAGGC  
 TGTAGGAGTGAATTTGAACTGAGCGCTTGGTCAAGATCCTAGAGGTGCTTCGGAACTCCCTGTCCCA  
 AACTACAGGACCCTGGAGTTCCTCATGAGGCATTGGTACACATGGCCTCATTAGTCCCAGACCAACA  
 TGCATGCTCGAACCTGGCCATCGTGTGGGCTCCCAACCTGCTGAGGTCTAAGGACATAGAGGCCTCAGG  
 CTTCAATGGGACAGCGGCCTTCATGGAGGTGCGGGTACAATCCATCGTGTGGAGTTCATCTCACACAC  
 GTGGACCAGCTCTTTGGGGGTGCTGCCCTCTGTTGGTGGAGGTGGAGAGTGGGTGGCGATCGCTTCCAG  
 GGACCCGGGCATCAGGCAGCCCCGAGGACCTTATGCCAGGCCACTGCCTTATCACCTGCCTAGCATACT  
 GCAGGCTGGCGATGGACCCACAGATGCCGCCCTACCATACTATCATCGAGATTGCAGAGCACAAGAGG  
 AAGGGGTCTTTGAAGGTCAGGAAGTGGAGGTCTATCTTCAATTTAGTTCGCTCTGGCCATGAGACTAAGC  
 GTAACCTCCACGGGGGGCTGAGGACAGGGAGGATAAATCCAACAAGGGGACACTGCGGCCAGCCAAAAG  
 CATGGACTCACTGAGTGTGCAGCTGGGGCCAGTGATGAGCCAGAGGGGCTGGTGGGGCCAGCAGCCCC  
 CGGCCAAGCCATTGCTGCCTGAGAGCTTGGAGAACGATTCTATAGAGGCAGCAGAGGGTGAACAGGAGC  
 CTGAGGCAGAACACTGGGTGGCACAACACTGAACCAGGCACACCAGAGCTGGGCGGTGAGCCATCCG  
 GGCTGGGGCAGCAGCCGTGCAGAACGCTGTGCTGGTGTCCACATCTCAGACCCCTACAATGTCAACCTC  
 CCGCTACACATCACCTCTATCCTCAGTGTGCCCCGAACATCATCTAACGTTTCTTGGCCAGGCTCA  
 CCCGTGGCCTTGAGTGCCTGCTCTACAGCACCGGCCAAGCCCTGCCTCTGGCCCTGGCCCTGGCCCTGG  
 CCTTGGCCCTGGCCCCCAGATGAAAAGTTGGAAGCAAGTCCAGCCTCAAGTCCCCTGGCAGACTCAGGC  
 CCAGACGACTTGGCTCCTGCCCTGGAGGACTCGCTGTCCAGGAGGTGCAGGACTCCTTCTCCTCTAG  
 AGGACTCAAGCAGCTCAGAACCTGAGTGGGTGGGGCAGAGGATGGGAGGTGGCCAGGCAGAAGCAGC  
 AGGAGCAGCCTTCTCCCCTGGGAGGACACCCTGGGATGGGCTACCTGGAGGAGCTCCTGGGAGTTGGG  
 CCTCAGGTGGAGGAGTTCTGTGGAGCCACCCTGGATGACCTGTCTGGATGAGGCACAGTTTGTCT  
 TGGCCCCAGCTGCTGTTCCGTGGACTCCGCTGGCCCCAGGCCTGAAGTTGAGGAGGAAAATGGGGAGGA  
 AGTTTTCTGAGTGCCTATGATGACCTAAGTCCCCTTCTGGGACCTAAACCCCAATCTGGAAGGGTTCA  
 GGGAGTCTGGAGGGAGAGGCAGCAGGATGTGGAAGGCAGGCTCTGGGACAGGGTGGGGAAGAGCAGGCAT  
 GCTGGGAAGTTGGGGAGGACAAGCAGGCTGAGCCTGGAGGCAGGCTAGACATCAGGGAAGAGGCAGAGGG  
 AAGTCCACAGCCACCTCAGCCAGAGGAGATGGAGCCTGAGGGGCAGCCAGTCCAGACGGCTGTCTATGC  
 CCCTGTTCTCTTGGCCTGGGTGGCGTGGCATGCGTCTAGCTTCCACTCTGGTTCAGGTCCAACAGGTCC  
 GCTCTGTGCCTGTGGTGGCCCCAAGCCACAGTTTGCCAAGATGCCAGTGAATGTGTAGCAAGATTCA  
 TGTGGCACCTGCAATCCATGCCGAGGCTGGCCGGCTTGTATGGGACTCCTGGAGAAAGGGCTTGGGG  
 TCCCAGCTTCTCGATCCTCTTGGAGGAATGGGGTAGTCTTTCCTTTGATGCTGTGTGGCCCTAGCCC  
 GGGACCGCAAAGGACTGAGGCTCAAGGAGTTCGGCGAACCCAGACCTGTACTGAGGGTGGGGATTACTG  
 CCTCATCCCAGAACCTCCCCTGTAGCATGATCTCTGCCATTCTCCTCGGCCCTTAGCTGCCTGGAG  
 CTCCCATCTGAAGGTGCAGAAGGTCTGGATCCCAGGAGTCTTGTAGTCTGCCCCCAGAGAACCCAGG  
 TTCCTGACCCCTGTTGCTCTCAGCGCAGATCATATGCATTTGAAACACAGGCTAACCTGGGAAAGG  
 TGAAGGACTG

ACGCGTACGCGGCCGCTCGAGCAGAACTCATCTCAGAAGAGGATCTGGCAGCAATGATATCCTGGATT  
 ACAAGGATGACGACGATAAGGTTTAA

**Protein Sequence:** >RC208825 representing NM\_181720  
 Red=Cloning site Green=Tags(s)

MKSRQKGKKKGS AKERVFGCDLQEHLQHSQVEVPQVLKSCAEFVEEYGVVDGIYRLSGVSSNIQKLRQEL  
 ESERKPDLRDDVYLQDIHCVSSLCKAYFRELDPDLLTYRLYDKFAEAVGVQLEPERLVKILEVLRPLVVP  
 NYRTLFLMRHLVHMASFSAQTNMHARNLAIWAPNLLRSKDIEASGFNGTAAFMEVVRVQSI VVEFILTH  
 VDQLFGGAALSGGEVESGWRSLPGTRASGSPEDLMRPLPYHLPSILQAGDGPPQMRPYHTIIIEIAEHKR  
 KGSLKVRKWRSIFNLGRSGHETKRKLPRGAEDREDKSNKGTLRPAKSMDLSAAAAGASDEPEGLVGPSSP  
 RPSPLLPELENDSIEAAEGEQEPEAEALGGTNSEPGTPRAGRSAIRAGGSSRAERCAGVHISDPYNNVL  
 PLHITSILSVPPNIISNVSLARL TRGLECPALQHRPSPASGPGPGPLGPGPPDEKLEASPASSPLADSG  
 PDDLAPALEDSLQEVQDSFSFLEDSSSEPEWVGAEDGEVAQAEAGAASFPGEDDPMGYLEELLGVG  
 PQVEEFSVEPPLDDL SLDEAQFVLAPSCCSVDSAGPRPEVEEENGEVFLSAYDDLSPLLGPKPPIWKGS  
 GSLEGEAAGCGRQALGQGGEEQACWEVGEDKQAEPPGRLDIREEAEGSPQPPQPEEMEPEQPSPDGCLC  
 PCSLGLGGVGMRLASTLVQVQVRSVPVPPKQFAKMP SAMCSKIHVAPANPCPRGRLDGTPGERAWG  
 SRASRSSWRNGSLSFDAVALARDRQRTEAQGVRRTQTCTEGGDYCLIPRTSPCSMISAHSPRPLSCL  
 LPSEGAEGSGSRSLSLPPREPQVPDLLSSQRRSYAFETQANPGKGEGL

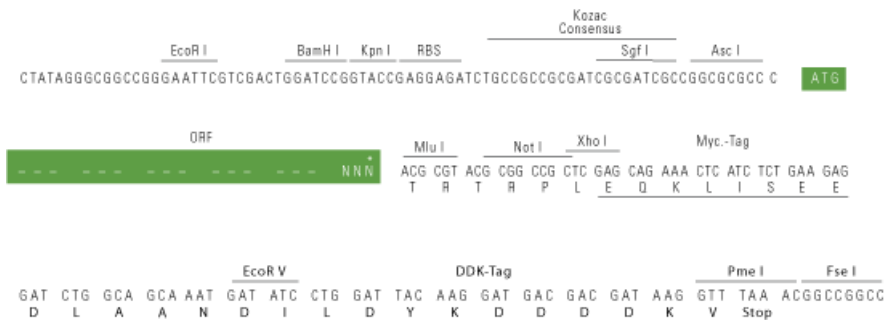
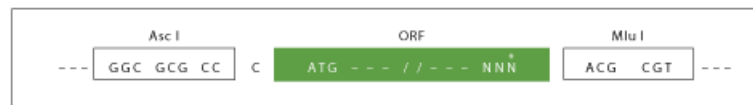
TRTRPLEQKLI SEEDLAANDILDYKDDDDKV

**Chromatograms:** [https://cdn.origene.com/chromatograms/ja1629\\_e09.zip](https://cdn.origene.com/chromatograms/ja1629_e09.zip)

**Restriction Sites:** AscI-MluI

**Cloning Scheme:**

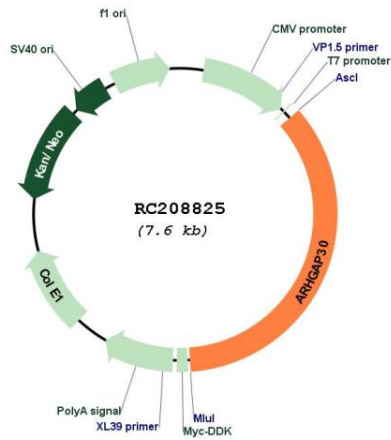
Cloning sites used for ORF Shuttling:



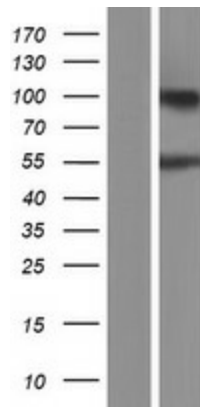
\* The last codon before the Stop codon of the ORF

<b>ACCN:</b>	NM_181720
<b>ORF Size:</b>	2670 bp
<b>OTI Disclaimer:</b>	The molecular sequence of this clone aligns with the gene accession number as a point of reference only. However, individual transcript sequences of the same gene can differ through naturally occurring variations (e.g. polymorphisms), each with its own valid existence. This clone is substantially in agreement with the reference, but a complete review of all prevailing variants is recommended prior to use. <a href="#">More info</a>
<b>OTI Annotation:</b>	This clone was engineered to express the complete ORF with an expression tag. Expression varies depending on the nature of the gene.
<b>Components:</b>	The ORF clone is ion-exchange column purified and shipped in a 2D barcoded Matrix tube containing 10ug of transfection-ready, dried plasmid DNA (reconstitute with 100 ul of water).
<b>Reconstitution Method:</b>	<ol style="list-style-type: none"><li>1. Centrifuge at 5,000xg for 5min.</li><li>2. Carefully open the tube and add 100ul of sterile water to dissolve the DNA.</li><li>3. Close the tube and incubate for 10 minutes at room temperature.</li><li>4. Briefly vortex the tube and then do a quick spin (less than 5000xg) to concentrate the liquid at the bottom.</li><li>5. Store the suspended plasmid at -20°C. The DNA is stable for at least one year from date of shipping when stored at -20°C.</li></ol>
<b>Note:</b>	Plasmids are not sterile. For experiments where strict sterility is required, filtration with 0.22um filter is required.
<b>RefSeq:</b>	<a href="#">NM_181720.1</a>
<b>RefSeq Size:</b>	3888 bp
<b>RefSeq ORF:</b>	2673 bp
<b>Locus ID:</b>	257106
<b>UniProt ID:</b>	<a href="#">Q7Z6I6</a>
<b>Cytogenetics:</b>	1q23.3
<b>MW:</b>	95.3 kDa
<b>Gene Summary:</b>	GTPase-activating protein (GAP) for RAC1 and RHOA, but not for CDC42.[UniProtKB/Swiss-Prot Function]

Product images:



Circular map for RC208825



Western blot validation of overexpression lysate (Cat# [LY405635]) using anti-DDK antibody (Cat# [TA50011-100]). Left: Cell lysates from untransfected HEK293T cells; Right: Cell lysates from HEK293T cells transfected with RC208825 using transfection reagent MegaTran 2.0 (Cat# [TT210002]).