

## Product datasheet for **RC208822**

### SLC32A1 (NM\_080552) Human Tagged ORF Clone

#### Product data:

Product Type:	Expression Plasmids
Product Name:	SLC32A1 (NM_080552) Human Tagged ORF Clone
Tag:	Myc-DDK
Symbol:	SLC32A1
Synonyms:	VGAT; VIAAT
Mammalian Cell Selection:	Neomycin
Vector:	pCMV6-Entry (PS100001)
E. coli Selection:	Kanamycin (25 ug/mL)



[View online »](#)

**ORF Nucleotide Sequence:**

>RC208822 representing NM\_080552  
 Red=Cloning site Blue=ORF Green=Tags(s)

TTTTGTAATACGACTCACTATAGGGCGGCCGGAATTCGTCGACTGGATCCGGTACCGAGGAGATCTGCC  
 GCC**CGGATCGCC**

ATGGCCACCTTGCTCCGAGCAAGCTGTCCAACGTGGCCACGTCCGTGTCCAACAAGTCCCAGGCCAAGA  
 TGAGCGCATGTTTCGCCAGGATGGGTTTTCAAGCGGCCACGGATGAGGAGCGGTGGCTTCGCGCATTG  
 CGACGACCTCGACTTTGAGCACCGCCAGGGCTGCAGATGGACATCCTGAAAGCCGAGGGAGAGCCCTGC  
 GGGACGAGGGCGCTGAAGCGCCGTCGAGGGAGACATCCATTATCAGCGAGGCAGCGGAGCTCCTCTGC  
 CGCCCTCCGGCTCCAAGGACCAGGTGGGAGGTGGTGGCAATTCGGGGGCCACGACAAGCCAAAATCAC  
 GGCGTGGGAGGCAGGCTGGAACGTGACCAACGCCATCCAGGGCATGTTCTGTCTGGGCTACCTACGCC  
 ATCCTGCACGGCGCTACCTGGGTTGTTTCTCATCATCTTCGCCCGCTTGTGTCTGCTACACCGGCA  
 AGATCCTCATCGCTGCCTGTACGAGGAGAATGAAGACGGCGAGGTGGTGCCTGCGGGACTCGTACGT  
 GGCCATAGCCAACGCCTGCTGCGCCCGCGCTTCCCAACGCTGGCGGCCGAGTGGTGAAGTACGCGAG  
 ATCATCGAGCTGGTGTGACGTGCATCCTGTACGTGGTGGTGGTGGCAACCTCATGTACAACAGCTTCC  
 CGGGGCTGCCCGTGTGCGAGAAGTCTGGTCCATTATCGCCACGGCCGTGCTGCTGCCTTGCCTTCTCT  
 TAAGAACCTCAAGGCCGTGTCCAAGTTCAGTCTGCTGTGCACTCTGGCCACTTCGTCATCAATACCTG  
 GTCATAGCCTACTGTCTATCGCGGGCGCGACTGGGCTGGGAGAAGGTCAAGTCTACATCGACGTCA  
 AGAAGTCCCCATCTCCATTGGCATCATCGTGTTCAGTACACGTCTCAGATCTTCTGCCTTCGCTGGA  
 GGGCAATATGCAGCAGCCAGCGAGTCCACTGCATGATGAACGGACGCACATCGCAGCCTGCGTGCTC  
 AAGGGCTCTTCGCGCTCGTGCCTACCTCACCTGGGCGGACGAGACCAAGGAGGTATCACGGATAAACC  
 TGCCCGCTCCATCCGCGCGGTGGTCAACATCTTCTGGTGGCCAAAGCGCTGTTGTCTATCCTCTGCC  
 ATTCTTTGCCGCTGTGAGGTGCTGGAGAAGTCCGCTTCCAGGAAGGCAGCCGCGCTTTTCCCGGCC  
 TGCTACAGCGGCGACGGGCGCTGAAGTCTGGGGCTGACGCTGCGCTGCGCGCTGCTGCTTTCACGC  
 TGCTCATGGCATTATGTGCCGCACTTCGCGTCTCATGGGCTCACCGGCAGCCTCACGGGCGCCGG  
 CCTCTGTTTCTGCTGCCAGCCTCTTTCACCTGCGCTGCTCTGGCGAAGCTGCTGTGGCACCAAGTC  
 TTCTTCGACGTCGCCATCTTCGTCATCGCGGCATCTGCAGCGTGTCCGGCTTCGTGCATCCCTCGAGG  
 GCCTCATCGAAGCTACCGAACCAACGCGGAGGAC

**ACGCGT**ACGCGGCCGCTCGAGCAGAACTCATCTCAGAAGAGGATCTGGCAGCAAATGATATCCTGGATT  
 ACAAGGATGACGACGATAAGGTTTAA

**Protein Sequence:**

>RC208822 representing NM\_080552  
 Red=Cloning site Green=Tags(s)

MATLLRSKLSNVATSVSNKSQAKMSGMFARMGFQAATDEEAVGF AHCDDLDFEHRQGLQMDILKAEGEPC  
 GDEGAEAPVEGDIHYQRSGAPLPPSGSKDQVGGGGEFGGHDKPKITAWAGWNVTNAIQGMFVLGLPYA  
 ILHGGYLGFLIIFAAVVCCYTGKILIACLYEENEDGEVVRVRSYVAIANACCAPRFPPTLGGRVNVAQ  
 IIELVMTCILYVVVSGNLMYNSFPGLPVSQKSWSIATAVLLPCAFLKNLKAVSKFSLCTLAHFVINIL  
 VIAYCLSRARDWAEKVKFYIDVKKFPISIGIIVFSYTSQIFLPSLEGNMQPSEFHCMMNWTIIAACVL  
 KGLFALVAYLTWADETKEVITDNLPGSIRAVVNIFLVAKALLSYPLPFFAAVEVLEKSLFQEGSRAFFPA  
 CYSGDGRLKSWGLTLRCALVVFLLMAIYVPHFALLMGLTGSLTGAGLCFLLPSLFHLRLLWRKLLWHQV  
 FFDVAIFVIGGICSVSGFVHSLEGLIEAYRTNAED

**TRTRPLEQKLI**SEEDLAANDILDYKDDDDKV

**Chromatograms:**

[https://cdn.origene.com/chromatograms/mg2950\\_f07.zip](https://cdn.origene.com/chromatograms/mg2950_f07.zip)

**Restriction Sites:**

Sgfl-MluI

**Cloning Scheme:**


**ACCN:** NM\_080552

**ORF Size:** 1575 bp

**OTI Disclaimer:** The molecular sequence of this clone aligns with the gene accession number as a point of reference only. However, individual transcript sequences of the same gene can differ through naturally occurring variations (e.g. polymorphisms), each with its own valid existence. This clone is substantially in agreement with the reference, but a complete review of all prevailing variants is recommended prior to use. [More info](#)

**OTI Annotation:** This clone was engineered to express the complete ORF with an expression tag. Expression varies depending on the nature of the gene.

**Components:** The ORF clone is ion-exchange column purified and shipped in a 2D barcoded Matrix tube containing 10ug of transfection-ready, dried plasmid DNA (reconstitute with 100 ul of water).

- Reconstitution Method:**
1. Centrifuge at 5,000xg for 5min.
  2. Carefully open the tube and add 100ul of sterile water to dissolve the DNA.
  3. Close the tube and incubate for 10 minutes at room temperature.
  4. Briefly vortex the tube and then do a quick spin (less than 5000xg) to concentrate the liquid at the bottom.
  5. Store the suspended plasmid at -20°C. The DNA is stable for at least one year from date of shipping when stored at -20°C.

**RefSeq:** [NM\\_080552.3](#)

**RefSeq Size:** 2581 bp

**RefSeq ORF:** 1578 bp

**Locus ID:** 140679

**UniProt ID:** [Q9H598](#)

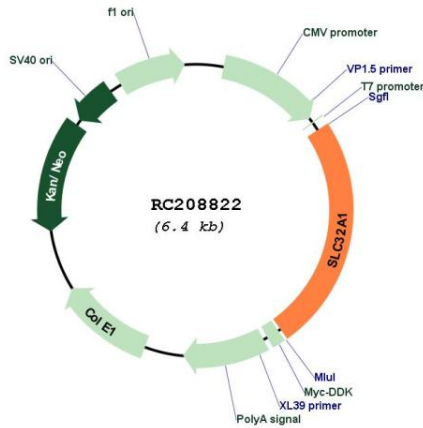
**Cytogenetics:** 20q11.23

**Protein Families:** Transmembrane

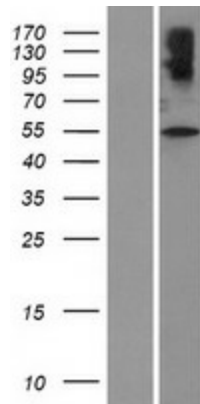
**MW:** 57.2 kDa

**Gene Summary:** The protein encoded by this gene is an integral membrane protein involved in gamma-aminobutyric acid (GABA) and glycine uptake into synaptic vesicles. The encoded protein is a member of amino acid/polyamine transporter family II. [provided by RefSeq, Jul 2008]

**Product images:**



Circular map for RC208822



Western blot validation of overexpression lysate (Cat# [LY409135]) using anti-DDK antibody (Cat# [TA50011-100]). Left: Cell lysates from untransfected HEK293T cells; Right: Cell lysates from HEK293T cells transfected with RC208822 using transfection reagent MegaTran 2.0 (Cat# [TT210002]).