

Product datasheet for **RC208810**

HOXC8 (NM_022658) Human Tagged ORF Clone

Product data:

Product Type:	Expression Plasmids
Product Name:	HOXC8 (NM_022658) Human Tagged ORF Clone
Tag:	Myc-DDK
Symbol:	HOXC8
Synonyms:	HOX3; HOX3A
Mammalian Cell Selection:	Neomycin
Vector:	pCMV6-Entry (PS100001)
E. coli Selection:	Kanamycin (25 ug/mL)
ORF Nucleotide Sequence:	>RC208810 ORF sequence Red=Cloning site Blue=ORF Green=Tags(s)

TTTTGTAATACGACTCACTATAGGGCGCCGGGAATTCGTCGACTGGATCCGGTACCGAGGAGATCTGCCGCC**CGATCGCC**

ATGAGCTCCTACTTCGTCAACCCCTGTTCTCCAATACAAAGCCGGCGAGTCCCTGGAACCGGCCTATTACGACTGCCGGTTCCTCAGAGCGTGGCAGGAGCCATGCGTGGTGTACGGGCCGGCGCTCGGCGCCGGCTTCCAGCACGTTTCGCACCAGTTCAAGACTTCTCCACCACGGCACCTCCGGCATCTCCAACCTCAGGCTACCAGCAGAACCCGTGCTCGTTAGCTGCCACGGAGACGCCTCAAATTCATGGCTACGAGGCGCTCCCAGACAGTCCCTTTATGGGGCTCAGCAAGAGGCGAGCGTGGTGAATATCCCGACTGTAATCCTCCGCAACACTAACAGTAGCGAAGGACAAGGCCACTTAAATCAAAACTCGTCTCCCAGCCTCATGTTTCCATGGATGAGACCCACGCTCCGGGAGGGCAGTGGACGGCAAACCTACAGCCGGTATCAGACCTTGGAACTAGAAAAGGAGTTTCTCTTAATCCTTATTTGACACGAAAACGTCGGATTGAAGTCTCTCATGCCCTGGGACTGACCAGAGACAAGTGAAGATCTGGTTCAGAACCGAAGGATGAAGTGGAAAAGGAGAACACAAGGATAAACTGCCGGGAGCCCGAGATGAGGAGAAGGTGGAGGAAGAAGAAATGAGGAAGAGGAGAAAGAAGAGGAGGAAAAGGAAGAAAACAAGGAC

ACGCGTACGCGGCCGCTCGAGCAGAACTCATCTCAGAAGAGGATCTGGCAGCAAATGATATCCTGGATTACAAGGATGACGACGATAAGGTTTAA



[View online »](#)

Protein Sequence: >RC208810 protein sequence
Red=Cloning site Green=Tags(s)

MSSYFVNPLFSKYKAGESLEPAYYDCRFPQSVGRSHALVYGPGGAPGFQHASHHVQDFFHHGTSGISNS
 GYQNPCLSLSCHGDASKFYGYEALPRQSLYGAQQEASVVQYPDCKSSANTNSSEGQHLNQNSSPSLMFP
 WMRPHAPGRRSRQTYSTRYQTLLEKEFLFNPYLTRKRRIEVSHALGLTERQVKIWFQNRMRKWKKENNK
 DKLPGARDEEKVEEEEGNEEEEEEEEEKEENKD

TRTRPLEQKLISEEDLAANDILDYKDDDDKV

Chromatograms: https://cdn.origene.com/chromatograms/mk6280_h04.zip

Restriction Sites: SgfI-MluI

Cloning Scheme:

Cloning sites used for ORF Shuttling:



* The last codon before the Stop codon of the ORF

ACCN: NM_022658

ORF Size: 726 bp

OTI Disclaimer: The molecular sequence of this clone aligns with the gene accession number as a point of reference only. However, individual transcript sequences of the same gene can differ through naturally occurring variations (e.g. polymorphisms), each with its own valid existence. This clone is substantially in agreement with the reference, but a complete review of all prevailing variants is recommended prior to use. [More info](#)

OTI Annotation: This clone was engineered to express the complete ORF with an expression tag. Expression varies depending on the nature of the gene.

Components: The ORF clone is ion-exchange column purified and shipped in a 2D barcoded Matrix tube containing 10ug of transfection-ready, dried plasmid DNA (reconstitute with 100 ul of water).

Reconstitution Method:

1. Centrifuge at 5,000xg for 5min.
2. Carefully open the tube and add 100ul of sterile water to dissolve the DNA.
3. Close the tube and incubate for 10 minutes at room temperature.
4. Briefly vortex the tube and then do a quick spin (less than 5000xg) to concentrate the liquid at the bottom.
5. Store the suspended plasmid at -20°C. The DNA is stable for at least one year from date of shipping when stored at -20°C.

Note: Plasmids are not sterile. For experiments where strict sterility is required, filtration with 0.22um filter is required.

RefSeq: [NM_022658.4](#)

RefSeq Size: 2290 bp

RefSeq ORF: 729 bp

Locus ID: 3224

UniProt ID: [P31273](#)

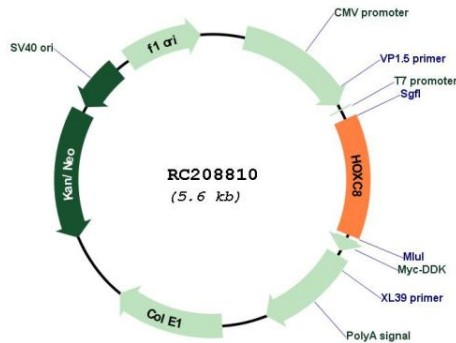
Cytogenetics: 12q13.13

Protein Families: Transcription Factors

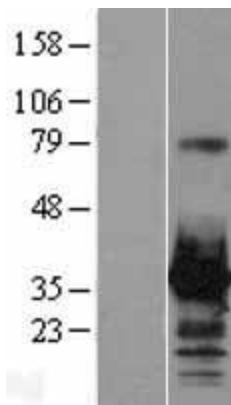
MW: 27.8 kDa

Gene Summary: This gene belongs to the homeobox family of genes. The homeobox genes encode a highly conserved family of transcription factors that play an important role in morphogenesis in all multicellular organisms. Mammals possess four similar homeobox gene clusters, HOXA, HOXB, HOXC and HOXD, which are located on different chromosomes and consist of 9 to 11 genes arranged in tandem. This gene is one of several homeobox HOXC genes located in a cluster on chromosome 12. The product of this gene may play a role in the regulation of cartilage differentiation. It could also be involved in chondrodysplasias or other cartilage disorders. [provided by RefSeq, Jul 2008]

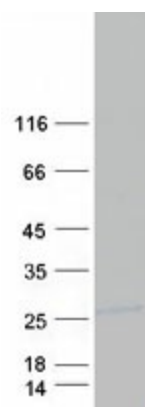
Product images:



Circular map for RC208810



Western blot validation of overexpression lysate (Cat# [LY411602]) using anti-DDK antibody (Cat# [TA50011-100]). Left: Cell lysates from untransfected HEK293T cells; Right: Cell lysates from HEK293T cells transfected with RC208810 using transfection reagent MegaTran 2.0 (Cat# [TT210002]).



Coomassie blue staining of purified HOXC8 protein (Cat# [TP308810]). The protein was produced from HEK293T cells transfected with HOXC8 cDNA clone (Cat# RC208810) using MegaTran 2.0 (Cat# [TT210002]).