

Product datasheet for **RC208807**

C9orf85 (NM_182505) Human Tagged ORF Clone

Product data:

Product Type: Expression Plasmids
Product Name: C9orf85 (NM_182505) Human Tagged ORF Clone
Tag: Myc-DDK
Symbol: C9orf85
Mammalian Cell Selection: Neomycin
Vector: pCMV6-Entry (PS100001)
E. coli Selection: Kanamycin (25 ug/mL)
ORF Nucleotide Sequence: >RC208807 ORF sequence
Red=Cloning site Blue=ORF Green=Tags(s)

TTTTGTAATACGACTCACTATAGGGCGGCCGGAATTCGTCGACTGGATCCGGTACCGAGGAGATCTGCC
GCC**CGATCGCC**

ATGAGCTCCCAGAAAGGCAACGTGGCTCGTTCCAGACCTCAGAAGCACCAGAATACGTTTAGCTTCAAAA
ATGACAAGTTCGATAAAAGTGTGCAGACCAAGAAAATTAATGCAAACTTCATGATGGAGTATGTCAGCG
CTGTAAGAAGTCTTGAGTGGCGTGTAAAATACAGCAAATACAAACCATTATCAAAACCTAAAAAGTGT
GTTAAATGTTTACAAAAGACAGTGAAGGATTCTTATCACATAATGTGCAGGCCATGTGCCTGTGAACCTG
AAGTTTGCAGAAAATGTGAAAGAAAGAAGACATTGTTATTCGGTGAATAAAGAAACAGAAAAAATAGA
ACATACTGAAAAATATCTAAGTTCCAACCATAGAAGAAGCTGCAGAAGAAATGAAGAAAGTGATGATGAT
TTAGATTTTGATATTGATTTAGAAGACACAGGAGGAGACCATCAAATGAAT

ACGCGTACGCGGCCGCTCGAGCAGAACTCATCTCAGAAGAGGATCTGGCAGCAAATGATATCCTGGATT
ACAAGGATGACGACGATAAGGTTTAA

Protein Sequence: >RC208807 protein sequence
Red=Cloning site Green=Tags(s)

MSSQKGNVARSRPQKHQNTFSFKNDKFDKSVQTKKINAKLHDGVCQRCKEVLEWRVKYSKYKPLSKPKKC
VKCLQKTVKDSYHIMCRPCACELEVCAKCGKKEDIVIPLNKETEKIEHTENNLSSNHRSCRNRNEESDDD
LDFDIDLEDTGGDHQMN

TRTRPLEQKLISEEDLAANDILDYKDDDDKV

Chromatograms: https://cdn.origene.com/chromatograms/mk6353_g12.zip

Restriction Sites: SgfI-MluI



[View online >](#)

Cloning Scheme:


ACCN: NM_182505

ORF Size: 471 bp

OTI Disclaimer: The molecular sequence of this clone aligns with the gene accession number as a point of reference only. However, individual transcript sequences of the same gene can differ through naturally occurring variations (e.g. polymorphisms), each with its own valid existence. This clone is substantially in agreement with the reference, but a complete review of all prevailing variants is recommended prior to use. [More info](#)

OTI Annotation: This clone was engineered to express the complete ORF with an expression tag. Expression varies depending on the nature of the gene.

Components: The ORF clone is ion-exchange column purified and shipped in a 2D barcoded Matrix tube containing 10ug of transfection-ready, dried plasmid DNA (reconstitute with 100 ul of water).

- Reconstitution Method:**
1. Centrifuge at 5,000xg for 5min.
 2. Carefully open the tube and add 100ul of sterile water to dissolve the DNA.
 3. Close the tube and incubate for 10 minutes at room temperature.
 4. Briefly vortex the tube and then do a quick spin (less than 5000xg) to concentrate the liquid at the bottom.
 5. Store the suspended plasmid at -20°C. The DNA is stable for at least one year from date of shipping when stored at -20°C.

RefSeq: [NM_182505.5](#)

RefSeq Size: 1328 bp

RefSeq ORF: 474 bp

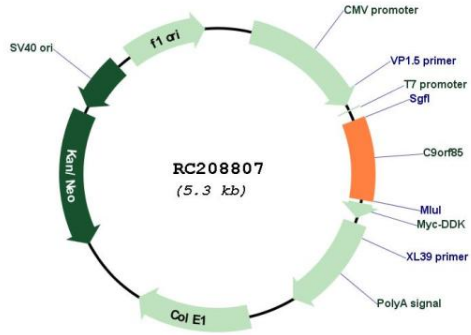
Locus ID: 138241

UniProt ID: [Q96MD7](#)

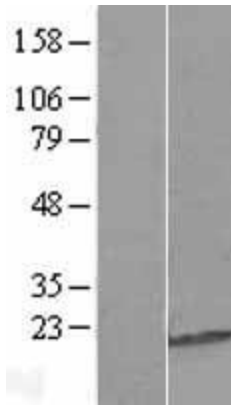
Cytogenetics: 9q21.13

MW: 18.3 kDa

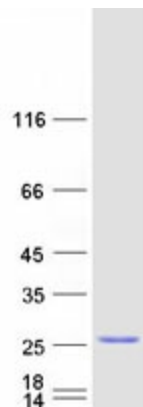
Product images:



Circular map for RC208807



Western blot validation of overexpression lysate (Cat# [LY405525]) using anti-DDK antibody (Cat# [TA50011-100]). Left: Cell lysates from untransfected HEK293T cells; Right: Cell lysates from HEK293T cells transfected with RC208807 using transfection reagent MegaTran 2.0 (Cat# [TT210002]).



Coomassie blue staining of purified C9orf85 protein (Cat# [TP308807]). The protein was produced from HEK293T cells transfected with C9orf85 cDNA clone (Cat# RC208807) using MegaTran 2.0 (Cat# [TT210002]).