

Product datasheet for **RC208802**

SUHW1 (ZNF280A) (NM_080740) Human Tagged ORF Clone

Product data:

| | |
|---------------------------|----------------------------------------------------|
| Product Type: | Expression Plasmids |
| Product Name: | SUHW1 (ZNF280A) (NM_080740) Human Tagged ORF Clone |
| Tag: | Myc-DDK |
| Symbol: | SUHW1 |
| Synonyms: | 3'OY11.1; SUHW1; ZNF280; ZNF636 |
| Mammalian Cell Selection: | Neomycin |
| Vector: | pCMV6-Entry (PS100001) |
| E. coli Selection: | Kanamycin (25 ug/mL) |



[View online »](#)

ORF Nucleotide Sequence:

>RC208802 ORF sequence
 Red=Cloning site Blue=ORF Green=Tags(s)

TTTTGTAATACGACTCACTATAGGGCGGCCGGAATTCGTCGACTGGATCCGGTACCGAGGAGATCTGCC
 GCC**CGGATCGCC**

ATGGGAGATATCTTTTTGTGAAGAAAGTGAATCACCAAAGAAGAATTTGAGAGAATCCAAACAAGGG
 AGGAGGATGATGAAGATCCAGATCTGATCTATGTTGGGGTGGAGCATGTACATAGAGATGCTGAAGTTCT
 CTTTGTGGGATGATTTCAAATTCAAAACCAAGTCGTTTCAAACATTTTGAACAGAGTCACCCAGGCTCA
 AATTCAAGAAGAAAGAAAGGCCACTTCCGTCAATATCCTGCTCACGTGTCGCAGCCTGCAAAATCATGTGA
 CCTCTATGGCAAAGCCATCATGCCGTTTCTCTGTCTGAGGGGCGATCGACAGATAGTCTGCTCACTAT
 GAAGTCTTCATCTGAACCTGGTTATAAAATGAGCTCACCAAGTTGTTTCTCCAGTTCCTCAGACTCG
 CTCCTCCAGGGACTCAGTGTCTAGTTGGAGCTATGGTCTCTGGAGGAGGCAGAAATGAGAGTTCTCCTG
 ATTCAAAGCGACTTCCACTTCAGATATAAACAGCAGAGATTCAAAAGGGTTAAACTCAGGGATGGAAT
 CCCAGGGTACCTTCTTTAGCTGTGGTCCCTTCAGATATGCTTCTACAATAAGCACAAATACACCTCA
 CAGGGGATCTGCAACTCATCAAACCATGTTTCAAGATGGAGTAACATTTCCCTTGGCCTGATGCTAATGGAA
 AGGCACATTTCAATCTTACAGATCCAGAGAGCAAGTGAAGTCTGCCCTGGCAATGACAGACATTTCAAG
 TCTAGCAAGTCAAAACAAGACCTTTGATCCCAAGAAAGAAAATCCCATCGTGTACTTAGCGACTTTTAC
 TATGGACAGCATAAAGGAGATGGGCAGCCGGAACAGAAGACTCACACCACCTTTAAATGCCTCAGCTGCG
 TGAAAGTTCTAAAAAATATTAAGTTTATGAATCACATGAAGCATCATTGGAAATTTGAGAAGCAGAGGAA
 CGACAGCTGGGAAGACCACACCCTGCCAGCACTGCCACCGCAGTTTCCCACTCCCTCCAGCTACAG
 TGTCACATTGATAGTGTACACATCGCCATGGGGCCCTCTGCTGTCTGTAATACTGTGAATTGTGCTTTG
 AAACAGATCAGGTCCTCTTACAACACATGAAGGACCATCATAAGCCTGGCGAAATGCCTTATGTGTGCCA
 GGTTTGCATTACAGATCGTCGGTCTTTGCTGATGTGGAAACACATTTTAGAACGTGCCATGAAAACACA
 AAGAATTTGCTTTGTCTGTTTTGTCTCAAACCTTTTCAAACCTGCAATACCATACATGAATCATTGTTGGA
 GGCACAGCAGAAGGAGGGTCTTTCAGTGTTCGAAGTGCCGGCTACAGTTTTTACGTTGAAGGAGGAAAT
 AGAGCACAAAACCAAGGACCATCAAACATTTAAAAAGCCGGAGCAACTGCAAGGGTTGCCTAGTGAACA
 AAAGTTATTATCAAACCTCAGTTCAGCCAGGATCAAGTGGTATGGCTTCCGTTATTGTTAGCAACTG
 ACCCTCAGTCTTCTCCTGTAATAAACTAAAAAGAAGACGGCTATGAACACTAGAGATTCAGACTCCCTTG
 CAGCAAGGATTCTAGC

ACGCGTACGCGGCCGCTCGAGCAGAAACTCATCTCAGAAGAGGATCTGGCAGCAAATGATATCCTGGATT
 ACAAGGATGACGACGATAAGGTTTAA

Protein Sequence:

>RC208802 protein sequence
 Red=Cloning site Green=Tags(s)

MGDIFLCKKVESPKNLRESKQREEDDEPDLIYVGEVHVRDAEVLVFGMISNSKPVVSNILNRPVTPGS
 NSRRKKGHFRQYPAHVSQPANHVTSMAKAIMPVSLSEGRSTDSPVTMKSSEPGYKMSSPQVVPSSSDS
 LPPGTQCLVGAMVSGGRNESSPDSKRLSTSDINRSRDKRVKLRDGIPIGVPSLAVVPSDMSSTISTNTPS
 QGICNSSNHVQNGVTFPWPDANGKAHFNLDPERASESALAMTDISSLASQNKTFDPKKNPIVLLSDFY
 YGQHKGDGQPEQKTHHTFKCLSCVKVLKNIKFMNHMKHLEFEKQRNDSWEDHTTCQHCHRQFPFPQLQ
 CHIDSVHIAMGPSAVCKICELSFETDQVLLQHMKDHHKPGEMPYVCQVCHYRSSFADVETHFRITCHENT
 KNLLCLFCLKLFKTAIPYMNHCWRHSRRRVLQCSKRLQFLTLKEEIEHKTKDHQTFKKPEQLQGLPSET
 KVIIQTSVQPGSSGMASVIVSNTDPQSSPVKTKKKKTAMNTRDSRLPCSKDSS

TRTRPLEQKLISEEDLAANDILDYKDDDDKV

Chromatograms:

https://cdn.origene.com/chromatograms/mk6227_c04.zip

Restriction Sites:

Sgfl-MluI

Cloning Scheme:


ACCN: NM_080740

ORF Size: 1626 bp

OTI Disclaimer: The molecular sequence of this clone aligns with the gene accession number as a point of reference only. However, individual transcript sequences of the same gene can differ through naturally occurring variations (e.g. polymorphisms), each with its own valid existence. This clone is substantially in agreement with the reference, but a complete review of all prevailing variants is recommended prior to use. [More info](#)

OTI Annotation: This clone was engineered to express the complete ORF with an expression tag. Expression varies depending on the nature of the gene.

Components: The ORF clone is ion-exchange column purified and shipped in a 2D barcoded Matrix tube containing 10ug of transfection-ready, dried plasmid DNA (reconstitute with 100 ul of water).

Reconstitution Method:

1. Centrifuge at 5,000xg for 5min.
2. Carefully open the tube and add 100ul of sterile water to dissolve the DNA.
3. Close the tube and incubate for 10 minutes at room temperature.
4. Briefly vortex the tube and then do a quick spin (less than 5000xg) to concentrate the liquid at the bottom.
5. Store the suspended plasmid at -20°C. The DNA is stable for at least one year from date of shipping when stored at -20°C.

RefSeq: [NM_080740.5](#)

RefSeq Size: 2175 bp

RefSeq ORF: 1629 bp

Locus ID: 129025

UniProt ID: [P59817](#)

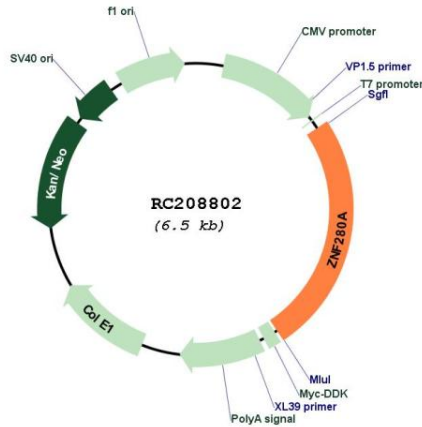
Cytogenetics: 22q11.22

Protein Families: Druggable Genome, Transcription Factors

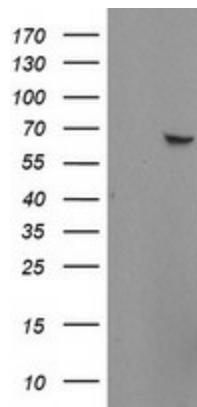
MW: 60.6 kDa

Gene Summary: This gene encodes a zinc finger protein. The encoded protein contains 4 C2H2-type zinc fingers, which are commonly found in transcription factors. A variety of functions may be performed by this type of zinc finger protein, including the binding of DNA or RNA. [provided by RefSeq, Apr 2014]

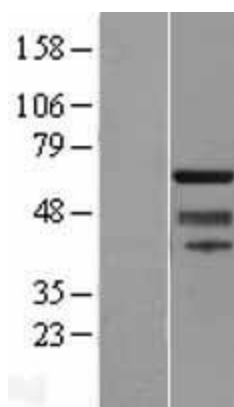
Product images:



Circular map for RC208802



HEK293T cells were transfected with the pCMV6-ENTRY control (Cat# [PS100001], Left lane) or pCMV6-ENTRY ZNF280A (Cat# RC208802, Right lane) cDNA for 48 hrs and lysed. Equivalent amounts of cell lysates (5 ug per lane) were separated by SDS-PAGE and immunoblotted with anti-ZNF280A (Cat# [TA800173]). Positive lysates [LY409057] (100ug) and [LC409057] (20ug) can be purchased separately from OriGene.



Western blot validation of overexpression lysate (Cat# [LY409057]) using anti-DDK antibody (Cat# [TA50011-100]). Left: Cell lysates from untransfected HEK293T cells; Right: Cell lysates from HEK293T cells transfected with RC208802 using transfection reagent MegaTran 2.0 (Cat# [TT210002]).