

Product datasheet for RC208798

MRRF (NM_199177) Human Tagged ORF Clone

Product data:

Product Type: Expression Plasmids
Product Name: MRRF (NM_199177) Human Tagged ORF Clone
Tag: Myc-DDK
Symbol: MRRF
Synonyms: MRFF; MTRRF; RRF
Mammalian Cell Selection: Neomycin
Vector: pCMV6-Entry (PS100001)
E. coli Selection: Kanamycin (25 ug/mL)
ORF Nucleotide Sequence: >RC208798 ORF sequence
 Red=Cloning site Blue=ORF Green=Tags(s)

TTTTGTAATACGACTCACTATAGGGCGCCGGGAATTCGTCGACTGGATCCGGTACCGAGGAGATCTGCC
 GCC**CGATCGCC**

ATGGCCTTGGGATTAAGTGCTCCGCATGGTCCACCCTACCTTCGCAATTATCTTGCAGCCTCTATCA
 GACCCGTTTCAGAAGTTACTGAAGACAGTGCATGAAAGACAACATGGCCATAGGCAATACATGGCCTA
 TTCAGCTGTACCAAGTCCGCCATTTGCTACCAAGAAAGCCAAAGCCAAAGGAAAGGACAGTCCAAACC
 AGAGTGAATATTAATGCTGCCTTGGTTGAGGATATAATCAACTTGAAGAGGTGAATGAAGAAATGAAGT
 CTGTGATAGAAGCTCTCAAGGATAATTTCAATAAGACTCTCAATATAAGGACCTCACCAGGATCCCTTGA
 CAAGATTGCTGTGTAAGTCTGACGGGAAGCTTGCTTTAAACCAGATTAGCCAGATCTCCATGAAGTCG
 CCACAGCTGATTTTGGTGAATATGGCCAGCTTCCAGAGTGTACAGCTGCAGCTATCAAGGCTATAAGAG
 AAAGTGAATGAATCTGAACCCAGAAGTGAAGGGACGCTAATTCGGGTACCCATTCCCCAATCAGCCAA
 ATGGCCGATGACACAGTGGCAGAACTGGACAGGCATCTGGCAG

ACGCGTACGCGGCCGCTCGAGCAGAACTCATCTCAGAAGAGGATCTGGCAGCAATGATATCCTGGATT
 ACAAGGATGACGACGATAAGGTTTAA

Protein Sequence: >RC208798 protein sequence
 Red=Cloning site Green=Tags(s)

MALGLKCFRMVHPTFRNYLAASIRPVSEVTLKTVHERQHGHRQYMAYSAVPVRFATKKAKAGKGGQSQT
 RVNINAALVEDIINLEEVNEEMKSVIEALKDNFNKTLNIRTSPGSLDKIAVVTADGKLALNQISQISMKS
 PQLILVNMAFPECTAAAIAKAIRESGMNLNPEVEGTLIRVPIPQSAKWPMTQWQNWTGIWQ

TRTRPLEQKLISEEDLAANDILDYKDDDDKV



[View online »](#)

Chromatograms: https://cdn.origene.com/chromatograms/mk6367_a08.zip

Restriction Sites: SgfI-MluI

Cloning Scheme:



ACCN: NM_199177

ORF Size: 603 bp

OTI Disclaimer: The molecular sequence of this clone aligns with the gene accession number as a point of reference only. However, individual transcript sequences of the same gene can differ through naturally occurring variations (e.g. polymorphisms), each with its own valid existence. This clone is substantially in agreement with the reference, but a complete review of all prevailing variants is recommended prior to use. [More info](#)

OTI Annotation: This clone was engineered to express the complete ORF with an expression tag. Expression varies depending on the nature of the gene.

Components: The ORF clone is ion-exchange column purified and shipped in a 2D barcoded Matrix tube containing 10ug of transfection-ready, dried plasmid DNA (reconstitute with 100 ul of water).

Reconstitution Method:

1. Centrifuge at 5,000xg for 5min.
2. Carefully open the tube and add 100ul of sterile water to dissolve the DNA.
3. Close the tube and incubate for 10 minutes at room temperature.
4. Briefly vortex the tube and then do a quick spin (less than 5000xg) to concentrate the liquid at the bottom.
5. Store the suspended plasmid at -20°C. The DNA is stable for at least one year from date of shipping when stored at -20°C.

RefSeq: [NM_199177.4](#)

RefSeq Size: 1540 bp

RefSeq ORF: 606 bp

Locus ID: 92399

UniProt ID: [Q96E11](#)

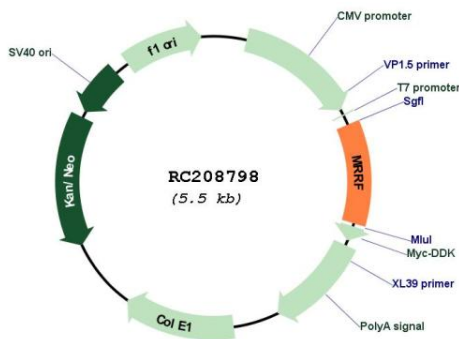
Cytogenetics: 9q33.2

Protein Families: Transmembrane

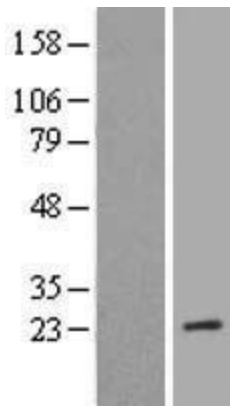
MW: 22.5 kDa

Gene Summary: This gene encodes a ribosome recycling factor, which is a component of the mitochondrial translational machinery. The encoded protein, along with mitochondrial elongation factor 2, functions in ribosomal recycling at the termination of mitochondrial translation by mediating the disassembly of ribosomes from messenger RNA. A pseudogene of this gene has been identified on chromosome X. [provided by RefSeq, Oct 2016]

Product images:



Circular map for RC208798



Western blot validation of overexpression lysate (Cat# [LY404675]) using anti-DDK antibody (Cat# [TA50011-100]). Left: Cell lysates from untransfected HEK293T cells; Right: Cell lysates from HEK293T cells transfected with RC208798 using transfection reagent MegaTran 2.0 (Cat# [TT210002]).