

Product datasheet for **RC208797**

DLX1 (NM_001038493) Human Tagged ORF Clone

Product data:

Product Type: Expression Plasmids
Product Name: DLX1 (NM_001038493) Human Tagged ORF Clone
Tag: Myc-DDK
Symbol: DLX1
Mammalian Cell Selection: Neomycin
Vector: pCMV6-Entry (PS100001)
E. coli Selection: Kanamycin (25 ug/mL)
ORF Nucleotide Sequence: >RC208797 ORF sequence
Red=Cloning site Blue=ORF Green=Tags(s)

TTTTGTAATACGACTCACTATAGGGCGGCCGGAATTCGTCGACTGGATCCGGTACCGAGGAGATCTGCC
GCC**CGATCGCC**

ATGACCATGACCACCATGCCAGAAAGTCTCAACAGCCCCGTGTCGGGCAAGGCGGTGTTTATGGAGTTTG
GGCCGCCCAACCAGCAAATGTCTCCTTCTCCCATGTCCCACGGGCACTACTCCATGCACTGTTTACACTC
GGCGGGCCATTCGAGCCCGACGGCGCTACAGCTCAGCCTCGTCCTTCTCCGACCGCTGGGCTACCCC
TACGTCAACTCGGTCAGCAGCCACGCATCCAGCCCCTACATCAGTTCGGTGCAGTCCTACCCGGGAGCGC
CCAGCCTCGCCAGAGCCGCTGGAGGACCCAGGTCAGATCTGGTTCCAAAACAAGCGATCCAAGTTCA
AGAAGCTGATGAAGCAGGTTGGGCGGCTCTGGAGGG

ACGCGTACGCGGCCGCTCGAGCAGAACTCATCTCAGAAGAGGATCTGGCAGCAAATGATATCCTGGATT
ACAAGGATGACGACGATAAGGTTTAA

Protein Sequence: >RC208797 protein sequence
Red=Cloning site Green=Tags(s)

MTMTMPESLNSPVSGKAVFMEFGPPNQMSPPMSHGHYSMHCLHSAGHSQPDGAYSSASSFSRPLGYP
YVNSVSSHASSPYISSVQSYPGSASLAQRSLEDPGQDLVPKQAIQVQEAEAGWGGSGG

TRTRPLEQKLISEEDLAANDILDYKDDDDKV

Chromatograms: https://cdn.origene.com/chromatograms/mk6860_a02.zip

Restriction Sites: Sgfl-MluI



[View online »](#)

Cloning Scheme:


ACCN: NM_001038493

ORF Size: 387 bp

OTI Disclaimer: The molecular sequence of this clone aligns with the gene accession number as a point of reference only. However, individual transcript sequences of the same gene can differ through naturally occurring variations (e.g. polymorphisms), each with its own valid existence. This clone is substantially in agreement with the reference, but a complete review of all prevailing variants is recommended prior to use. [More info](#)

OTI Annotation: This clone was engineered to express the complete ORF with an expression tag. Expression varies depending on the nature of the gene.

Components: The ORF clone is ion-exchange column purified and shipped in a 2D barcoded Matrix tube containing 10ug of transfection-ready, dried plasmid DNA (reconstitute with 100 ul of water).

- Reconstitution Method:**
1. Centrifuge at 5,000xg for 5min.
 2. Carefully open the tube and add 100ul of sterile water to dissolve the DNA.
 3. Close the tube and incubate for 10 minutes at room temperature.
 4. Briefly vortex the tube and then do a quick spin (less than 5000xg) to concentrate the liquid at the bottom.
 5. Store the suspended plasmid at -20°C. The DNA is stable for at least one year from date of shipping when stored at -20°C.

RefSeq: [NM_001038493.2](#)

RefSeq Size: 2203 bp

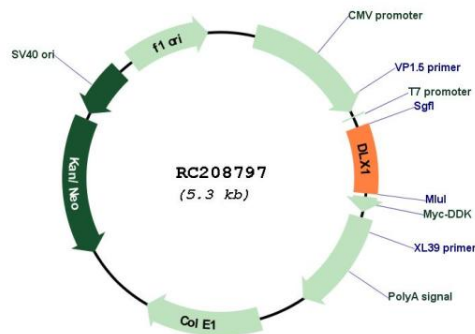
RefSeq ORF: 390 bp

Locus ID: 1745

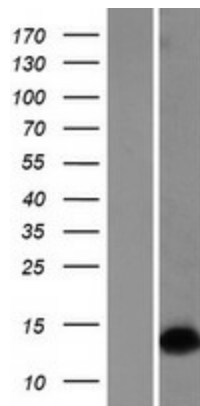
UniProt ID: [P56177](#)
Cytogenetics: 2q31.1
Protein Families: ES Cell Differentiation/IPS, Transcription Factors
MW: 13.5 kDa

Gene Summary: This gene encodes a member of a homeobox transcription factor gene family similar to the *Drosophila* distal-less gene. The encoded protein is localized to the nucleus where it may function as a transcriptional regulator of signals from multiple TGF- β superfamily members. The encoded protein may play a role in the control of craniofacial patterning and the differentiation and survival of inhibitory neurons in the forebrain. This gene is located in a tail-to-tail configuration with another member of the family on the long arm of chromosome 2. Alternatively spliced transcript variants encoding different isoforms have been described. [provided by RefSeq, Jul 2008]

Product images:



Circular map for RC208797



Western blot validation of overexpression lysate (Cat# [LY422001]) using anti-DDK antibody (Cat# [TA50011-100]). Left: Cell lysates from untransfected HEK293T cells; Right: Cell lysates from HEK293T cells transfected with RC208797 using transfection reagent MegaTran 2.0 (Cat# [TT210002]).