

Product datasheet for **RC208795**

MTA3 (NM_020744) Human Tagged ORF Clone

Product data:

Product Type:	Expression Plasmids
Product Name:	MTA3 (NM_020744) Human Tagged ORF Clone
Tag:	Myc-DDK
Symbol:	MTA3
Mammalian Cell Selection:	Neomycin
Vector:	pCMV6-Entry (PS100001)
E. coli Selection:	Kanamycin (25 ug/mL)



[View online »](#)

ORF Nucleotide Sequence:

>RC208795 ORF sequence
 Red=Cloning site Blue=ORF Green=Tags(s)

TTTTGTAATACGACTCACTATAGGGCGGCCGGAATTCGTCGACTGGATCCGGTACCGAGGAGATCTGCC
 GCC**GCGATCGCC**

ATGGCGCCAACATGTACCGGGTCGGAGATTATGTCTACTTTGAGAATTCCTCCAGCAACCCATACCTAA
 TAAGAAGGATAGAAGAACTCAACAAGACTGCAAGTGGCAACGTGGAAGCAAAAGTAGTATGCTTTTATAG
 ACGACGTGATATTTCCAACACACTTATAATGCTCGCAGATAAGCATGCTAAAGAAATTGAGGAAGATCT
 GAAACAACAGTTGAGGCTGACTTGACCGATAAGCAGAAACATCAGTTGAAACATAGGGAACCTTTTTGT
 CACGCCAGTATGAATCTCTGCCCAACACATATCAGGGGAAAGTGCAGTGTGCCCTTCTGAATGAGAC
 AGAATCAGTATTGCATATCTTGATAAGGAGGATACCTTCTTCTACTCATTGGTCTATGACCCTCATTG
 AAAACACTATTAGCTGACAAAGGTGAAATCAGAGTGGGACCTAGATATCAAGCAGACATTCCAGAAATGC
 TGTTAGAAGGAGAATCAGATGAGAGGGAACAATCAAAATTGGAAGTTAAAGTTGGGATCCAATAGCCC
 ACTTACGGATCGACAGATTGACCAGTTTTAGTTGTAGCAGTGTGTTGGGACATTCGCCAGAGCCCTG
 GATTGCAGCAGTTCTGTGAGGCAGCCTAGTTTGCATATGAGTGTCTGCAGCTCCCGAGACATCACCT
 TGTTTTACGCTATGGATACATTGTATAGACACAGCTATGATTTGAGCAGTGCCATTAGTGTCTTAGTACC
 ACTCGGAGGACCTGTTTTATGCAGAGATGAAATGGAGGAATGGTCAGCCTCTGAAGCTAGCTTATTTGAA
 GAGGCACTGGAAAAATATGGCAAAGACTTCAATGACATACGGCAAGATTTTCTTCTTGGAAATCATTGA
 CTAGCATCATTGAATATTATTACATGTGGAAAACACTGACAGATATGTGCAACAGAAACGTCTAAAAGC
 AGCAGAAGCTGAGAGTAACTGAAACAAGTATATATCCCAACTACAGCAAACCAATCCCAACCAATA
 TCCACTAGTAATGGGAAGCCTGGTGTGTAATGGAGCTGTGGGACCACGTTCCAGCCTCAGAATCCTC
 TCTTAGGAGAGCCTGTGAGAGCTGCTATGCTACACAGTCTCACCAGTGGTATTCTTGGGGCCACCTAA
 TATGCAGTGTAGATTATGTGCAATTTGTTGGCTTTATTGGAAAAATATGGAGGCTTAAAAATGCCACC
 CAGTCAGAAGAAGAGAAGTTATCTCTAGCCAACTACAGAGGACCCTCGTGTAGAAAGTACAGTGTCCC
 GCCAGGCCATGCAGGGAATGCCAGTCCGAAACACTGGGAGTCCAAAGTCTGCAGTGAAGACCCGCCAAGC
 TTTCTTCTTACTACTACATATTTCAAAAATTTGCTCGTCAAGTCTGCAAAAATACCCTCCGGCTGCGG
 CAGGCAGCAAGACGGCCGTTTGTGCTATTAATTATGCTGCCATTAGGGCAGAATGTAAGATGCTTTTAA
 ATTCT

ACGCGTACGCGGCCGCTCGAGCAGAAACTCATCTCAGAAGAGGATCTGGCAGCAAATGATATCCTGGATT
 ACAAGGATGACGACGATAAGGTTTAA

Protein Sequence:

>RC208795 protein sequence
 Red=Cloning site Green=Tags(s)

MAANMYRVGDYVYFENSNNPYLIRRIEELNKTASGNVEAKVVCFYRRRDISNTLIMLADKHAKEIEEES
 ETTVEADLTDKQKHQLKHRELFSLRQYESLPATHIRGKCSVALLNETESVLSYLDKEDTFFYSLVYDPSL
 KTL LADKGEIRVGPRYQADIPMLLEGE SDEREQSKLEVKVWDPNSPLTDRQIDQFLVVARAVGTFARAL
 DCSSSVRQPSLHMSAAAASRDITLFHAMDTLYRHSYDLSSAISVLVPLGGPVLCRDEMEEWSASEASLFE
 EALEKYGKDFNDRQDFLPWKSLTSIEYYMWKTTDRYVQKRLKAAEAE SKLKQVYIPTYSKPNPNI
 STSNGKPGAVNGAVGTTFPQNP LLGRACESCYATQSHQWYSWGPPNMQCRLCAICWLWYKKYGGLKMP
 QSEEEKLSPSPTTEDPRVRSVSRQAMQMPVVRNTGSPKSAVKTRQAFLLHTTYFTKFARQVCKNLR
 QAARRPFVAINYAAIRAECMMLNS

TRTRPLEQKLISEEDLAANDILDYKDDDDKV

Chromatograms:

https://cdn.origene.com/chromatograms/mk6216_e11.zip

Restriction Sites:

Sgfl-MluI

Cloning Scheme:


ACCN: NM_020744

ORF Size: 1545 bp

OTI Disclaimer: The molecular sequence of this clone aligns with the gene accession number as a point of reference only. However, individual transcript sequences of the same gene can differ through naturally occurring variations (e.g. polymorphisms), each with its own valid existence. This clone is substantially in agreement with the reference, but a complete review of all prevailing variants is recommended prior to use. [More info](#)

OTI Annotation: This clone was engineered to express the complete ORF with an expression tag. Expression varies depending on the nature of the gene.

Components: The ORF clone is ion-exchange column purified and shipped in a 2D barcoded Matrix tube containing 10ug of transfection-ready, dried plasmid DNA (reconstitute with 100 ul of water).

- Reconstitution Method:**
1. Centrifuge at 5,000xg for 5min.
 2. Carefully open the tube and add 100ul of sterile water to dissolve the DNA.
 3. Close the tube and incubate for 10 minutes at room temperature.
 4. Briefly vortex the tube and then do a quick spin (less than 5000xg) to concentrate the liquid at the bottom.
 5. Store the suspended plasmid at -20°C. The DNA is stable for at least one year from date of shipping when stored at -20°C.

RefSeq: [NM_020744.3](#)

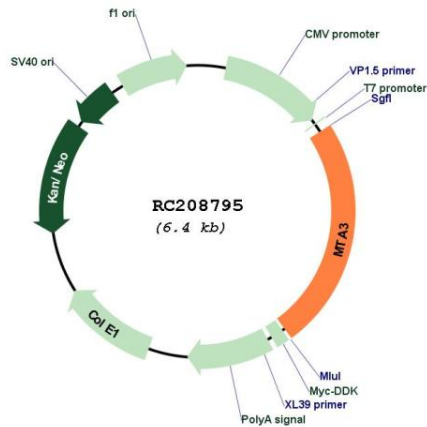
RefSeq Size: 2218 bp

RefSeq ORF: 1548 bp

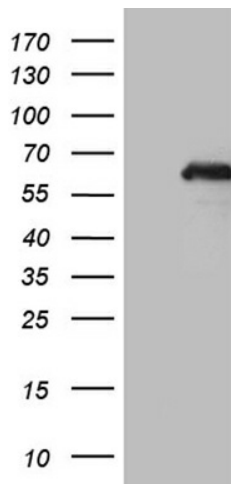
Locus ID: 57504

UniProt ID: [Q9BTC8](#)

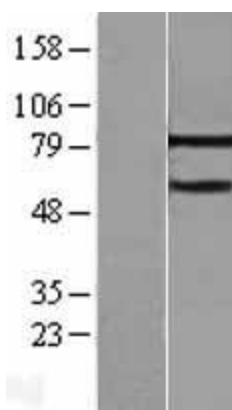
Cytogenetics: 2p21
Protein Families: Transcription Factors
MW: 58.8 kDa
Gene Summary: Plays a role in maintenance of the normal epithelial architecture through the repression of SNAI1 transcription in a histone deacetylase-dependent manner, and thus the regulation of E-cadherin levels. Contributes to transcriptional repression by BCL6.[UniProtKB/Swiss-Prot Function]

Product images:


Circular map for RC208795



HEK293T cells were transfected with the pCMV6-ENTRY control (Cat# [PS100001], Left lane) or pCMV6-ENTRY MTA3 (Cat# RC208795, Right lane) cDNA for 48 hrs and lysed. Equivalent amounts of cell lysates (5 ug per lane) were separated by SDS-PAGE and immunoblotted with anti-MTA3 (Cat# [TA809742])(1:2000). Positive lysates [LY412368] (100ug) and [LC412368] (20ug) can be purchased separately from OriGene.



Western blot validation of overexpression lysate (Cat# [LY412368]) using anti-DDK antibody (Cat# [TA50011-100]). Left: Cell lysates from untransfected HEK293T cells; Right: Cell lysates from HEK293T cells transfected with RC208795 using transfection reagent MegaTran 2.0 (Cat# [TT210002]).



Coomassie blue staining of purified MTA3 protein (Cat# [TP308795]). The protein was produced from HEK293T cells transfected with MTA3 cDNA clone (Cat# RC208795) using MegaTran 2.0 (Cat# [TT210002]).