

Product datasheet for **RC208793**

C15orf38 (ARPIN) (NM_182616) Human Tagged ORF Clone

Product data:

Product Type:	Expression Plasmids
Product Name:	C15orf38 (ARPIN) (NM_182616) Human Tagged ORF Clone
Tag:	Myc-DDK
Symbol:	C15orf38
Synonyms:	C15orf38
Mammalian Cell Selection:	Neomycin
Vector:	pCMV6-Entry (PS100001)
E. coli Selection:	Kanamycin (25 ug/mL)
ORF Nucleotide Sequence:	>RC208793 ORF sequence Red=Cloning site Blue=ORF Green=Tags(s)

TTTTGTAATACGACTCACTATAGGGCGGCCGGAATTCGTCGACTGGATCCGGTACCGAGGAGATCTGCCGCC**CGATCGCC**

ATGAGCCGCATCTACCACGACGGCGCGCTCCGGAACAAGGCGGTGCAGAGCGTCCGGTGCCAGGGGCTGGGACCCCGCGCCACCAGGGGGAAATGGTGTCTGCTGGAGGGAGAAGTATCGATGTATCTCGGCA CAGCATCTTGACTCATGGCAGGAAGGAGCGCTACTACGTGCTGTATATCCGGCCAGTCACATCCATCGCCGTAATTCGACGCCAAGGGAAATGAAATCGAGCCAACTTCAGCGCCACCAGGAAGGTGAACACGG GCTTCTCATGTGCTCTACAAGGTGGAAGCCAAGGGGGACACTGACAGGCTCACGCCGAGGCGTGAA GGGGCTGGTCAACAAGCCAGAGCTGCTCGCGTGACAGAGAGCCTCACCCCGACCACACAGTGGCGTTC TGGATGCCCGAGTCAGAGATGGAGGTGATGGAAGTTCGAGCTGGGGCCGGGTACGGCTGAAGACTCGGG GCGATGGTCCCTTCTGGATTCAATGGCCAACTTGGAGCTGGAACAGTGACCAAGTGAATTTCACTGG TGATGGAAGACAGGGGCATCCTGGACAGACAACATCATGGCCAAAAGTGTTCGAAGGGGGCTGCAGCG GAGATCCGAGAGCAGGGGATGGGGCAGAGGACGAGGAGTGGGATGAC

ACGCGTACGCGGGCGCTCGAGCAGAAACTCATCTCAGAAGAGGATCTGGCAGCAAATGATATCTGGATT ACAAGGATGACGACGATAAGGTTTAA



[View online »](#)

Protein Sequence: >RC208793 protein sequence
Red=Cloning site Green=Tags(s)

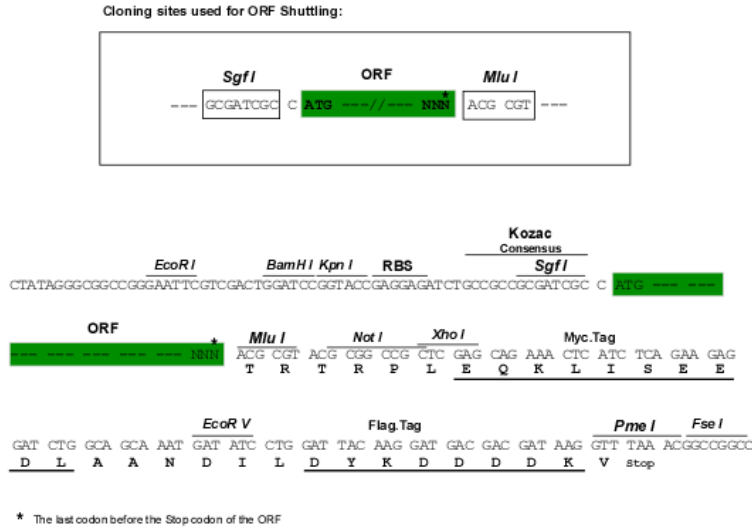
MSRIYHDGALRNKAVQSVRLPGAWDPAAHQGGNGVLLLEGELIDVSRHSILDTHGRKERYVLYIRPSHIH
 RRFKFDAGNEIEPNFSATRKVNTGFLMSSYKVEAKGDTDRLTPEALKGLVKNPELLALTESLTPDHTVAF
 WMPESEMEVMLEL GAGVRLKTRGDGPFLLSLAKLEAGVTKCNFTGDGKTGASWTDNIMAQKCSKGA
 AA EIREQGDGAEEWDD

TRTRPLEQKLISEEDLAANDILDYKDDDDKV

Chromatograms: https://cdn.origene.com/chromatograms/mk6860_a10.zip

Restriction Sites: SgfI-MluI

Cloning Scheme:



ACCN: NM_182616

ORF Size: 678 bp

OTI Disclaimer: The molecular sequence of this clone aligns with the gene accession number as a point of reference only. However, individual transcript sequences of the same gene can differ through naturally occurring variations (e.g. polymorphisms), each with its own valid existence. This clone is substantially in agreement with the reference, but a complete review of all prevailing variants is recommended prior to use. [More info](#)

OTI Annotation: This clone was engineered to express the complete ORF with an expression tag. Expression varies depending on the nature of the gene.

Components: The ORF clone is ion-exchange column purified and shipped in a 2D barcoded Matrix tube containing 10ug of transfection-ready, dried plasmid DNA (reconstitute with 100 ul of water).

Reconstitution Method:

1. Centrifuge at 5,000xg for 5min.
2. Carefully open the tube and add 100ul of sterile water to dissolve the DNA.
3. Close the tube and incubate for 10 minutes at room temperature.
4. Briefly vortex the tube and then do a quick spin (less than 5000xg) to concentrate the liquid at the bottom.
5. Store the suspended plasmid at -20°C. The DNA is stable for at least one year from date of shipping when stored at -20°C.

Note: Plasmids are not sterile. For experiments where strict sterility is required, filtration with 0.22um filter is required.

RefSeq: [NM_182616.4](#)

RefSeq Size: 6114 bp

RefSeq ORF: 681 bp

Locus ID: 348110

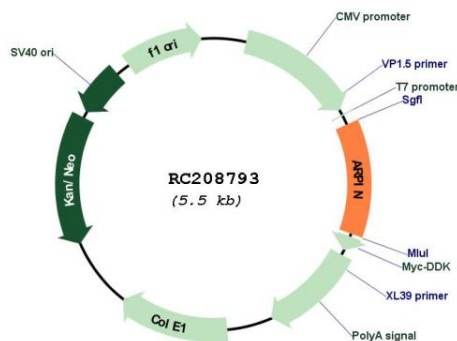
UniProt ID: [Q7Z6K5](#)

Cytogenetics: 15q26.1

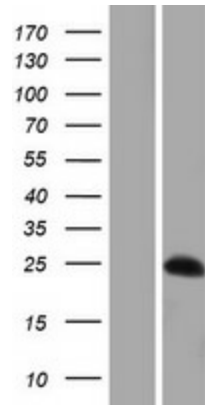
MW: 24.9 kDa

Gene Summary: Regulates actin polymerization by inhibiting the actin-nucleating activity of the Arp2/3 complex; the function is competitive with nucleation promoting factors. Participates in an incoherent feedforward loop at the lamellipodium tip where it inhibits the ARP2/2 complex in response to Rac signaling and where Rac also stimulates actin polymerization through the WAVE complex. Involved in steering cell migration by controlling its directional persistence. [UniProtKB/Swiss-Prot Function]

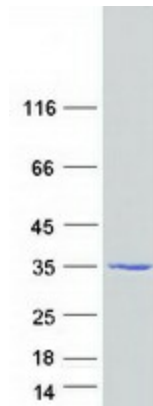
Product images:



Circular map for RC208793



Western blot validation of overexpression lysate (Cat# [LY405459]) using anti-DDK antibody (Cat# [TA50011-100]). Left: Cell lysates from untransfected HEK293T cells; Right: Cell lysates from HEK293T cells transfected with RC208793 using transfection reagent MegaTran 2.0 (Cat# [TT210002]).



Coomassie blue staining of purified ARPIN protein (Cat# [TP308793]). The protein was produced from HEK293T cells transfected with ARPIN cDNA clone (Cat# RC208793) using MegaTran 2.0 (Cat# [TT210002]).