

Product datasheet for **RC208790**

GCSF Receptor (CSF3R) (NM_000760) Human Tagged ORF Clone

Product data:

Product Type:	Expression Plasmids
Product Name:	GCSF Receptor (CSF3R) (NM_000760) Human Tagged ORF Clone
Tag:	Myc-DDK
Symbol:	GCSF Receptor
Synonyms:	CD114; GCSFR; SCN7
Mammalian Cell Selection:	Neomycin
Vector:	pCMV6-Entry (PS100001)
E. coli Selection:	Kanamycin (25 ug/mL)



[View online »](#)

ORF Nucleotide
Sequence:

>RC208790 ORF sequence
 Red=Cloning site Blue=ORF Green=Tags(s)

TTTTGTAATACGACTCACTATAGGGCGGCCGGGAATTCGTCGACTGGATCCGGTACCGAGGAGATCTGCC
 GCC**CGGATCGCC**

ATGGCAAGGCTGGGAACTGCAGCCTGACTTGGGCTGCCCTGATCATCCTGCTGCTCCCCGGAAGTCTGG
 AGGAGTGCGGGCACATCAGTGTCTCAGCCCCATCGTCCACCTGGGGGATCCCATCACAGCCTCCTGCAT
 CATCAAGCAGAAGTGCAGCCATCTGACCCCGAGCCACAGATTCTGTGGAGACTGGGAGCAGAGCTTCAG
 CCCGGGGCAGGCAGCAGCGTCTGTCTGATGGGACCCAGGAATCTATCATCACCTGCCCCACCTCAACC
 ACACTCAGGCCTTCTCTCCTGCTGCCTGAACTGGGGCAACAGCCTGCAGATCCTGGACCAGGTTGAGCT
 GCGCGCAGGCTACCCTCCAGCCATACCCACAACCTCTCCTGCCTCATGAACTCACAACCAGCAGCCTC
 ATCTGCCAGTGGGAGCCAGGACCTGAGACCCACCTACCCACCAGCTTCACTCTGAAGAGTTTCAAGAGCC
 GGGGCAACTGTCAGACCAAGGGGACTCCATCCTGGACTGCGTGCCCAAGGACGGGCAGAGCCACTGCTG
 CATCCCACGAAACACCTGCTGTTGTACCAGAATATGGGCATCTGGGTGCAGGCAGAGAATGCGCTGGGG
 ACCAGCATGTCCCACAACCTGTGCTTGTATCCCATGGATGTTGTGAACTGGAGCCCCCATGCTGCGGA
 CCATGGACCCAGCCCTGAAGCGGCCCTCCCCAGGCAGGCTGCCTACAGCTGTGCTGGGAGCCATGGCA
 GCCAGGCTGCACATAAATCAGAAGTGTGAGCTGCGCCACAAGCCGACGCGTGGAGAAGCCAGCTGGGCA
 CTGGTGGGCCCTCCCTTGGAGGCCCTTCAATGAGCTCTGCGGGCTCCTCCAGCCACGGCCTACA
 CCCTGCAGATACGCTGCATCCGCTGGCCCTGCCTGGCCACTGGAGCGACTGGAGCCCCAGCCTGGAGCT
 GAGAACTACGAACGGGCCCTACTGTGACTGGACACATGGTGGCGGCAGAGGCAGCTGGAGCCCCAGG
 ACAGTGCAGCTGTTCTGGAAGCCAGTGGCCCTGGAGGAAGACAGCGGACGGATCCAAGGTTATGTGGTTT
 CTTGGAGACCTCAGGCCAGGCTGGGGCCATCCTGCCCTCTGCAACACCACAGAGCTCAGTGCACCTT
 CCACCTGCCTTTCAGAAGCCAGGAGGTGGCCCTTGTGGCCTATAACTCAGCCGGGACCTCTCGTCCCACT
 CCGGTGGTCTTCTCAGAAAGCAGAGGCCAGCTCTGACCAGACTCCATGCCATGGCCGAGACCCTCACA
 GCCTCTGGGTAGGCTGGGAGCCCCCAATCCATGGCCTCAGGGCTATGTGATTGAGTGGGCTGGGCC
 CCCCAGCGCAGCAATAGCAACAAGACCTGGAGGATGGAACAGAATGGGAGAGCCACGGGTTTCTGCTG
 AAGGAGAACATCAGGCCCTTTCAGCTCTATGAGATCATCGTGACTCCCTTGTACCAGGACACCATGGGAC
 CCTCCAGCATGTCTATGCCTACTCTCAAGAAATGGCTCCCTCCCATGCCCCAGAGCTGCATCTAAAGCA
 CATTGGCAAGACCTGGGCACAGCTGGAGTGGTGCCTGAGCCCCCTGAGCTGGGAAGAGCCCCCTTACC
 CACTACACCATCTTCTGGACCAACGCTCAGAACCAGTCTTCTCCGCCATCCTGAATGCCTCCTCCCGTG
 GCTTTGTCTCCATGGCCTGGAGCCCGCAGTCTGTATACATCCACCTCATGGCTGCCAGCCAGGCTGG
 GGCCACCAACAGTACAGTCTCACCTGATGACCTTGACCCAGAGGGTTCGGAGCTACACATCATCCTG
 GGCTGTTTCGGCCTCCTGCTGTTGCTCACCTGCCTCTGTGGAAGTGCCTGGCTCTGTTGCAGCCCCAACA
 GGAAGAAATCCCCTCTGGCCAAGTGTCCCAGACCCAGCTCACAGCAGCCTGGGCTCCTGGGTGCCCAAT
 CATGGAGGAGGATGCCTTCCAGCTGCCCGGCTTGGCACGCCACCCATCACCAAGCTCACAGTGTGGAG
 GAGGATGAAAAGAAGCCGGTGCCTGGGAGTCCCATAACAGCTCAGAGACCTGTGGCCTCCCCACTCTGG
 TCCAGACCTATGTGCTCCAGGGGACCCAAGAGCAGTTTCCACCCAGCCCCAATCCCAGTCTGCCCCAG
 CGATCAGGTCCTTATGGGCAGCTGCTGGGCAGCCCCACAAGCCAGGGCCAGGGCACTATCTCCGCTGT
 GACTCCACTCAGCCCCTTGGCGGGCCTCACCCAGCCCAAGTCTATGAGAACCTCTGGTTCCAGG
 CCAGCCCCCTGGGACCCCTGGTAACCCAGCCCAAGCCAGGAGGACGACTGTGTCTTGGGCCACTGCT
 CAACTCCCCCTCCTGCAGGGGATCCGGGTCCATGGGATGGAGGCGCTGGGGAGCTTC

ACGCGTACGCGGCCGCTCGAGCAGAACTCATCTCAGAAGAGGATCTGGCAGCAATGATATCCTGGATT
 ACAAGGATGACGACGATAAGGTTTAA

Protein Sequence: >RC208790 protein sequence
Red=Cloning site Green=Tags(s)

MARLGNCSLTWAALIILLPGSLEECGHISVSAPIVHLGDPITASCIKQNCSHLDPEPQILWRLGAELQ
PGGRQQRLSDGTQESIITLPHLNHTQAFLLSCCLNWGNSLQILDQVELRAGYPPAIPHNLSCLMNLTSSSL
ICQWEPGPETHLPTSFTLKSFKSRGNCQTQGDSILDCVPKDGQSHCCIPRKHLLLYQNMGIWVQAENALG
TSMSPQLCLDPM DVVLEPPMLRTMDPSPEAAPQAGCLQLCWEPWQPGLHINQKCELRHKPQRGEASWA
LVGPLPLEALQYELCGLLPATAYTLQIRCIWPLPGHWSWSPSLELRTERAPT VRLDTWWRQRQLDPR
TVQLFWKPVLEEDSGRIQGYVVSWRPSGQAGAILPLCNTTEL SCTFHLPSEAQEV ALVAYNSAGTSRPT
PVVFSERGPALTRLHAMARDPHSLWVGWEPNPWPQGYVIEWGLGPPSASNSNKTWRMEQNGRATGFL
KENIRPFQLYEIIVTPL YQDTMGPSQHVYAYSQEMAPSHAPELHLKHIGKTWAQLEWVPEPPELGSPLT
HYTIFWTNAQNQSFSAILNASSRGFVLHGLEPASLYHIHLMAASQAGATNSTVL TLMTLTPEGSELHIIL
GLFGLLLLLTCLCGTAWLCCSPNRKNPLWPSVDP AHSSLGSWVPTIMEEDAFQLPGLGTPPITKLTVLE
EDEKPPVPWESHNSSETCGLPTLVQTYVLQGDPRAVSTQPQSQSGTSDQVLYGQLLGSPTSPGPGHYLRC
DSTQPLL AGLTPSPKSYENLWFQASPLGLVTPAPSQEDDCVFGPLLNFLLQGIRVHGMEALGSF

TRTRPLEQKLI SEEDLAANDILDYKDDDDKV

Chromatograms: https://cdn.origene.com/chromatograms/mk6163_c01.zip

Restriction Sites: Sgfl-Mlul

Cloning Scheme:



ACCN: NM_000760

ORF Size: 2508 bp

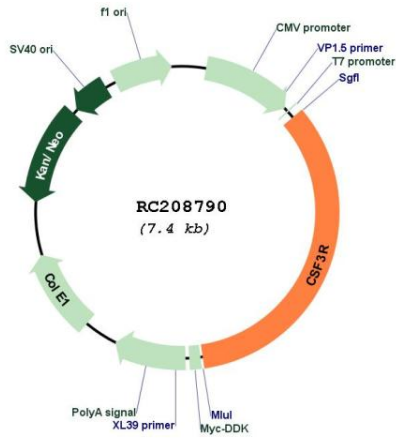
OTI Disclaimer: The molecular sequence of this clone aligns with the gene accession number as a point of reference only. However, individual transcript sequences of the same gene can differ through naturally occurring variations (e.g. polymorphisms), each with its own valid existence. This clone is substantially in agreement with the reference, but a complete review of all prevailing variants is recommended prior to use. [More info](#)

OTI Annotation: This clone was engineered to express the complete ORF with an expression tag. Expression varies depending on the nature of the gene.

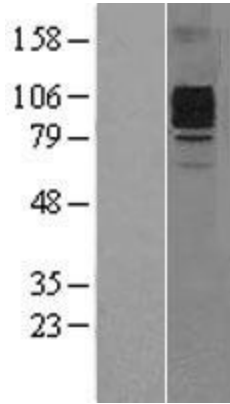
Components: The ORF clone is ion-exchange column purified and shipped in a 2D barcoded Matrix tube containing 10ug of transfection-ready, dried plasmid DNA (reconstitute with 100 ul of water).

Reconstitution Method:	<ol style="list-style-type: none">1. Centrifuge at 5,000xg for 5min.2. Carefully open the tube and add 100ul of sterile water to dissolve the DNA.3. Close the tube and incubate for 10 minutes at room temperature.4. Briefly vortex the tube and then do a quick spin (less than 5000xg) to concentrate the liquid at the bottom.5. Store the suspended plasmid at -20°C. The DNA is stable for at least one year from date of shipping when stored at -20°C.
RefSeq:	NM_000760.4
RefSeq Size:	3419 bp
RefSeq ORF:	2511 bp
Locus ID:	1441
UniProt ID:	Q99062
Cytogenetics:	1p34.3
Domains:	FN3
Protein Families:	Druggable Genome, ES Cell Differentiation/IPS, Secreted Protein, Transmembrane
Protein Pathways:	Cytokine-cytokine receptor interaction, Hematopoietic cell lineage, Jak-STAT signaling pathway, Pathways in cancer
MW:	92.2 kDa
Gene Summary:	The protein encoded by this gene is the receptor for colony stimulating factor 3, a cytokine that controls the production, differentiation, and function of granulocytes. The encoded protein, which is a member of the family of cytokine receptors, may also function in some cell surface adhesion or recognition processes. Alternatively spliced transcript variants have been described. Mutations in this gene are a cause of Kostmann syndrome, also known as severe congenital neutropenia. [provided by RefSeq, Aug 2010]

Product images:



Circular map for RC208790



Western blot validation of overexpression lysate (Cat# [LY403523]) using anti-DDK antibody (Cat# [TA50011-100]). Left: Cell lysates from untransfected HEK293T cells; Right: Cell lysates from HEK293T cells transfected with [RC216558] using transfection reagent MegaTran 2.0 (Cat# [TT210002]).