

## Product datasheet for RC208786

### IL1RAP (NM\_134470) Human Tagged ORF Clone

#### Product data:

Product Type:	Expression Plasmids
Product Name:	IL1RAP (NM_134470) Human Tagged ORF Clone
Tag:	Myc-DDK
Symbol:	IL1RAP
Synonyms:	C3orf13; IL-1RAcP; IL1R3
Mammalian Cell Selection:	Neomycin
Vector:	pCMV6-Entry (PS100001)
E. coli Selection:	Kanamycin (25 ug/mL)
ORF Nucleotide Sequence:	>RC208786 ORF sequence Red=Cloning site Blue=ORF Green=Tags(s)

TTTTGTAATACGACTCACTATAGGGCGCCGGGAATTCGTCGACTGGATCCGGTACCGAGGAGATCTGCC  
GCC**CGATCGCC**

ATGACACTTCTGTGGTGTAGTGAGTCTCTACTTTTATGGAATCCTGCAAAGTGATGCCTCAGAACGCT  
GCGATGACTGGGGACTAGACACCATGAGGCAAATCCAAGTGTGGAAGATGAGCCAGCTCGCATCAAGTG  
CCCCTCTTTGAACACTTCTTCAAATCAACTACAGCACAGCCATTAGCTGGCCTTACTCTGATCTGG  
TATTGGACTAGGCAGGACCGGGACCTTGAGGAGCCAATTAACCTCCGCCTCCCGAGAACCGCATTAGTA  
AGGAGAAAGATGTGCTGTGGTCCGGCCACTCTCCTCAATGACTGGCAACTATACCTGCATGTTAAG  
GAACACTACATATGCAGCAAAGTGCATTTCCCTTGGAAAGTTGTTCAAAAAGACAGCTGTTTCAATTCC  
CCCATGAAACTCCCAGTGCATAAAGTATATAGAATATGGCATTAGAGGATCATTGTCCAAATGTAG  
ATGGATATTTTCCCTTCCAGTGTCAAACCGACTATCACTTGGTATATGGGCTGTTAAAAATACAGAATTT  
TAATAATGTAATACCCGAAGGTATGAACTTGAGTTTCTCATTGCCTTAATTTCAAATAATGGAAATTAC  
ACATGTGTTGTTACATATCCAGAAAATGGACGTACGTTTCATCTCACCAGGACTCTGACTGTAAAGGTAG  
TAGGCTCTCAAAAAATGCAGTGCCCTGTGATCCATTACCTAATGATCATGTGGTCTATGAGAAAGA  
ACCAGGAGAGGAGCTACTATCCCTGTACGGTCTATTTTAGTTTTCTGATGGATTCTCGCAATGAGGTT  
TGGTGGACCATTGATGGAAAAAACCTGATGACATCACTATTGATGTCACCATTAACGAAAGTATAAGTC  
ATAGTAGAACAGAAGATGAAACAAGAAGTCAAGTTTGGAGCATCAAGAAAGTTACCTCTGAGGATCTCAA  
GCGCAGCTATGTCTGTCTAGTAGAAGTGCCTAAAGGCGAAGTTGCCAAAGCAGCCAAGGTGAAGCAGAAA  
GGTAATAGATGCGGTCAG

**ACGCGT**ACGCGGCCGCTCGAGCAGAAACTCATCTCAGAAGAGGATCTGGCAGCAAATGATATCCTGGATT  
ACAAGGATGACGACGATAAGGTTTAA



[View online >](#)

**Protein Sequence:** >RC208786 protein sequence  
Red=Cloning site Green=Tags(s)

MTLLWCVVSLYFYGILQSDASERCDDWGLDTMRQIQVFEDEPARIKCPLFEHFLKFNYSTAHSAGLTLIW  
 YWTRQDRDLEEFINFRLENRISKEKDVLFWRPTLLNDTGNVTCMLRNTTYCSKVAFFLEVVQKDSFNS  
 PMKLPVHKLIEYGIQRITCPNVDGYFPSSVKPTITWYMGYKIQNFNNVIEPEGMNLSFLIALISNNGNY  
 TCVVTPENGRTFHLTRLTLVKVVGSPKNAVPPVIHSPNDHVVEKEPGEELLIPCTVYFVFLMDSRNEV  
 WWTIDGKKPDDITIDVTINESISHSRTEDETRTQILSIKKVTSKRSYVCHARSAKGEVAKAAKVKQK  
 GNRCGQ

TRTRPLEQKLISEEDLAANDILDYKDDDDKV

**Chromatograms:** [https://cdn.origene.com/chromatograms/mk6353\\_f11.zip](https://cdn.origene.com/chromatograms/mk6353_f11.zip)

**Restriction Sites:** SgfI-MluI

**Cloning Scheme:**



\* The last codon before the Stop codon of the ORF

**ACCN:** NM\_134470

**ORF Size:** 1068 bp

**OTI Disclaimer:** The molecular sequence of this clone aligns with the gene accession number as a point of reference only. However, individual transcript sequences of the same gene can differ through naturally occurring variations (e.g. polymorphisms), each with its own valid existence. This clone is substantially in agreement with the reference, but a complete review of all prevailing variants is recommended prior to use. [More info](#)

**OTI Annotation:** This clone was engineered to express the complete ORF with an expression tag. Expression varies depending on the nature of the gene.

**Components:** The ORF clone is ion-exchange column purified and shipped in a 2D barcoded Matrix tube containing 10ug of transfection-ready, dried plasmid DNA (reconstitute with 100 ul of water).

**Reconstitution Method:**

1. Centrifuge at 5,000xg for 5min.
2. Carefully open the tube and add 100ul of sterile water to dissolve the DNA.
3. Close the tube and incubate for 10 minutes at room temperature.
4. Briefly vortex the tube and then do a quick spin (less than 5000xg) to concentrate the liquid at the bottom.
5. Store the suspended plasmid at -20°C. The DNA is stable for at least one year from date of shipping when stored at -20°C.

**RefSeq:** [NM\\_134470.4](#)

**RefSeq Size:** 2114 bp

**RefSeq ORF:** 1071 bp

**Locus ID:** 3556

**UniProt ID:** [Q9NPH3](#)

**Cytogenetics:** 3q28

**Domains:** ig, IG

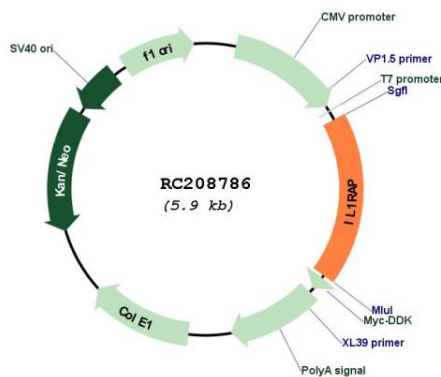
**Protein Families:** Druggable Genome, Secreted Protein, Transmembrane

**Protein Pathways:** Apoptosis, Cytokine-cytokine receptor interaction

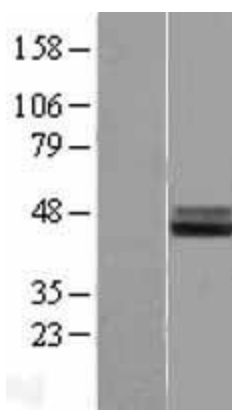
**MW:** 41 kDa

**Gene Summary:** This gene encodes a component of the interleukin 1 receptor complex, which initiates signalling events that result in the activation of interleukin 1-responsive genes. Alternative splicing of this gene results in membrane-bound and soluble isoforms differing in their C-terminus. The ratio of soluble to membrane-bound forms increases during acute-phase induction or stress. [provided by RefSeq, Jul 2018]

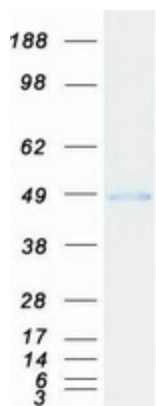
### Product images:



Circular map for RC208786



Western blot validation of overexpression lysate (Cat# [LY408731]) using anti-DDK antibody (Cat# [TA50011-100]). Left: Cell lysates from untransfected HEK293T cells; Right: Cell lysates from HEK293T cells transfected with RC208786 using transfection reagent MegaTran 2.0 (Cat# [TT210002]).



Coomassie blue staining of purified IL1RAP protein (Cat# [TP308786]). The protein was produced from HEK293T cells transfected with IL1RAP cDNA clone (Cat# RC208786) using MegaTran 2.0 (Cat# [TT210002]).