

## Product datasheet for **RC208785**

### Galectin 3 (LGALS3) (NM\_002306) Human Tagged ORF Clone

#### Product data:

Product Type:	Expression Plasmids
Product Name:	Galectin 3 (LGALS3) (NM_002306) Human Tagged ORF Clone
Tag:	Myc-DDK
Symbol:	Galectin 3
Synonyms:	CBP35; GAL3; GALBP; GALIG; L31; LGALS2; MAC2
Mammalian Cell Selection:	Neomycin
Vector:	pCMV6-Entry (PS100001)
E. coli Selection:	Kanamycin (25 ug/mL)
ORF Nucleotide Sequence:	>RC208785 ORF sequence Red=Cloning site Blue=ORF Green=Tags(s)

TTTTGTAATACGACTCACTATAGGGCGGCCGGAATTCGTCGACTGGATCCGGTACCGAGGAGATCTGCC  
GCC**CGATCGCC**

ATGGCAGACAATTTTTGCTCCATGATGCGTTATCTGGGTCTGGAAACCCAAACCCTCAAGGATGGCCTG  
GCGCATGGGGGAACCAGCCTGCTGGGGCAGGGGGCTACCCAGGGGCTTCCTATCCTGGGGCTACCCCGG  
GCAGGCACCCCGAGGGCTTATCCTGGACAGGCACCTCCAGGCGCCTACCATGGAGCACCTGGAGCTTAT  
CCCGGAGCACCTGCACCTGGAGTCTACCCAGGGCCACCCAGGCGCCTGGGGCTACCCATCTTCTGGAC  
AGCCAAGTGCCCCGGAGCCTACCCTGCCACTGGCCCCTATGGCGCCCCTGCTGGGCCACTGATTGTGCC  
TTATAACCTGCCTTTGCCTGGGGGAGTGGTGCCTCGCATGCTGATAACAATTCTGGGCACGGTGAAGCCC  
AATGCAAACAGAATTGCTTTAGATTTCCAAAGAGGGAATGATGTTGCCTTCCACTTTAACCCACGCTTCA  
ATGAGAACAACAGGAGAGTCATTGTTTGAATACAAAGCTGGATAATAACTGGGAAGGGAAGAAAGACA  
GTCGGTTTTCCATTTGAAAGTGGGAAACCATTCAAAATACAAGTACTGGTTGAACCTGACCACTTCAAG  
GTTGCAGTGAATGATGCTCACTTGTGTCAGTACAATCATCGGGTTAAAAAACTCAATGAAATCAGCAAAC  
TGGGAATTTCTGGTGACATAGACCTCACCAGTGCTTCATATACCATGATA

**ACGCGT**ACGCGGCCGCTCGAGCAGAAACTCATCTCAGAAGAGGATCTGGCAGCAAATGATATCCTGGATT  
ACAAGGATGACGACGATAAGGTTTAA



[View online »](#)

**Protein Sequence:** >RC208785 protein sequence  
Red=Cloning site Green=Tags(s)

MADNFSLHDALSGSGNPNPQGWPGAWGNQFAGAGGYPGASYPGAYPGQAPPGAYPGQAPPGAYHGAPGAY  
 PGAPAPGVYPPSPGPGAYPSSGQPSAPGAYPATGPYGPAGPLIVPYNLPLPGGVVPRMLITILGTVKP  
 NANRIALDFQRGNDVAFHFNPRFNENRRRIVCNTKLDNNWGREERQSVFPFESGKPFKIQVLEVPDHFK  
 VAVNDAHLLQYNHRVKKLNEISKLGISGDIDLTSASYTMI

TRTRPLEQKLISEEDLAANDILDYKDDDDKV

**Chromatograms:** [https://cdn.origene.com/chromatograms/mk6126\\_a07.zip](https://cdn.origene.com/chromatograms/mk6126_a07.zip)

**Restriction Sites:** SgfI-MluI

**Cloning Scheme:**

Cloning sites used for ORF Shuttling:



\* The last codon before the Stop codon of the ORF

**ACCN:** NM\_002306

**ORF Size:** 750 bp

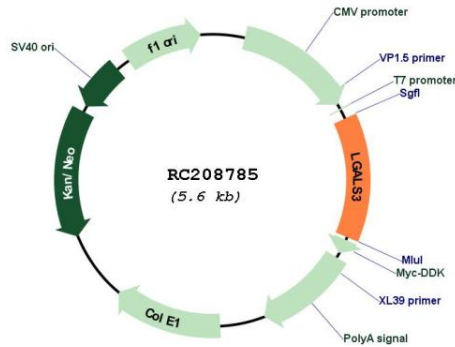
**OTI Disclaimer:** The molecular sequence of this clone aligns with the gene accession number as a point of reference only. However, individual transcript sequences of the same gene can differ through naturally occurring variations (e.g. polymorphisms), each with its own valid existence. This clone is substantially in agreement with the reference, but a complete review of all prevailing variants is recommended prior to use. [More info](#)

**OTI Annotation:** This clone was engineered to express the complete ORF with an expression tag. Expression varies depending on the nature of the gene.

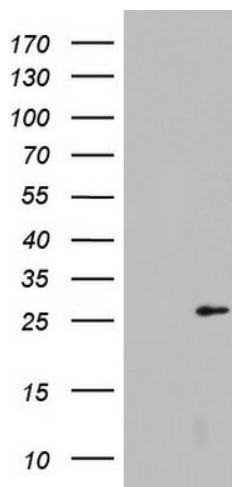
**Components:** The ORF clone is ion-exchange column purified and shipped in a 2D barcoded Matrix tube containing 10ug of transfection-ready, dried plasmid DNA (reconstitute with 100 ul of water).

<b>Reconstitution Method:</b>	<ol style="list-style-type: none"><li>1. Centrifuge at 5,000xg for 5min.</li><li>2. Carefully open the tube and add 100ul of sterile water to dissolve the DNA.</li><li>3. Close the tube and incubate for 10 minutes at room temperature.</li><li>4. Briefly vortex the tube and then do a quick spin (less than 5000xg) to concentrate the liquid at the bottom.</li><li>5. Store the suspended plasmid at -20°C. The DNA is stable for at least one year from date of shipping when stored at -20°C.</li></ol>
<b>Note:</b>	Plasmids are not sterile. For experiments where strict sterility is required, filtration with 0.22um filter is required.
<b>RefSeq:</b>	<a href="#">NM_002306.1</a> , <a href="#">NP_002297.1</a>
<b>RefSeq Size:</b>	1017 bp
<b>RefSeq ORF:</b>	753 bp
<b>Locus ID:</b>	3958
<b>UniProt ID:</b>	<a href="#">P17931</a>
<b>Cytogenetics:</b>	14q22.3
<b>Domains:</b>	Gal-bind_lectin
<b>Protein Families:</b>	Secreted Protein
<b>MW:</b>	26.2 kDa
<b>Gene Summary:</b>	<p>This gene encodes a member of the galectin family of carbohydrate binding proteins. Members of this protein family have an affinity for beta-galactosides. The encoded protein is characterized by an N-terminal proline-rich tandem repeat domain and a single C-terminal carbohydrate recognition domain. This protein can self-associate through the N-terminal domain allowing it to bind to multivalent saccharide ligands. This protein localizes to the extracellular matrix, the cytoplasm and the nucleus. This protein plays a role in numerous cellular functions including apoptosis, innate immunity, cell adhesion and T-cell regulation. The protein exhibits antimicrobial activity against bacteria and fungi. Alternate splicing results in multiple transcript variants.[provided by RefSeq, Oct 2014]</p>

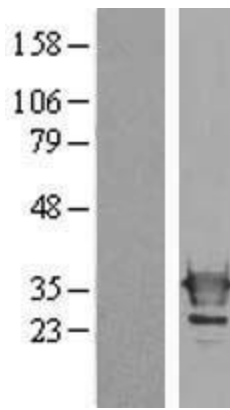
Product images:



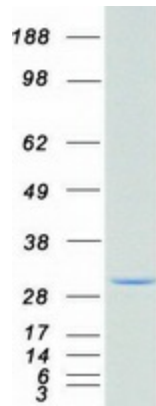
Circular map for RC208785



HEK293T cells were transfected with the pCMV6-ENTRY control (Cat# [PS100001], Left lane) or pCMV6-ENTRY LGALS3 (Cat# RC208785, Right lane) cDNA for 48 hrs and lysed. Equivalent amounts of cell lysates (5 ug per lane) were separated by SDS-PAGE and immunoblotted with anti-LGALS3(Cat# [TA801621]). Positive lysates [LY400834] (100ug) and [LC400834] (20ug) can be purchased separately from OriGene.



Western blot validation of overexpression lysate (Cat# [LY400834]) using anti-DDK antibody (Cat# [TA50011-100]). Left: Cell lysates from untransfected HEK293T cells; Right: Cell lysates from HEK293T cells transfected with RC208785 using transfection reagent MegaTran 2.0 (Cat# [TT210002]).



Coomassie blue staining of purified LGALS3 protein (Cat# [TP308785]). The protein was produced from HEK293T cells transfected with LGALS3 cDNA clone (Cat# RC208785) using MegaTran 2.0 (Cat# [TT210002]).