

Product datasheet for **RC208779**

ZFP200 (ZNF200) (NM_198087) Human Tagged ORF Clone

Product data:

Product Type:	Expression Plasmids
Product Name:	ZFP200 (ZNF200) (NM_198087) Human Tagged ORF Clone
Tag:	Myc-DDK
Symbol:	ZFP200
Mammalian Cell Selection:	Neomycin
Vector:	pCMV6-Entry (PS100001)
E. coli Selection:	Kanamycin (25 ug/mL)
ORF Nucleotide Sequence:	>RC208779 ORF sequence Red=Cloning site Blue=ORF Green=Tags(s)

TTTTGTAATACGACTCACTATAGGGCGGCCGGGAATTCGTCGACTGGATCCGGTACCGAGGAGATCTGCCGCC**CGATCGCC**

ATGGCTGCAAAAGTGGTTCCTATGCCCCCAAAGCCAAAGCAGTCCTTTATACTGAGAGTTCGCCAGACT
CCAAGCTGGGCCAAGACCTACTTCGAGATGCCACTAACGGGCCAAGACCATCCACCAGCTAGTGTGGA
GCACTTCTCACCTTCTTGCCCAAGCCAAGCCTGGTCCAGCCCAGTCAGAAAAGTCAAGGAGACCTTGGTT
ATTATGAAAGATGTGAGCTCAAGCCTTCAGAACAGAGTGCATCCTCGTCCCTTGGTGAAGCTTCTGCCCA
AAGGAGTCCAAAAGGAACAAGAGACAGTGTCTGTATTTGAAAGCTAACCTGAGGAGCTGGTGGTCTT
TGAGGATTTGAATGTATTTCACTGCCAGGAAGAATGTGTGAGCTTGGATCCTACTCAACAACCTCAGTCA
GAGAAGGAAGATGACAGCAGTGTGCGGGAAATGATGTTACTGGTCAATGGCAGTAATCCTGAAGGTGAAG
ATCCTGAGAGGGAACCTGTAGAAAATGAAGATTATAGAGAAAAGTCTTCAGATGATGATGAAATGGATTC
TTCCTTGGTCTCTCAGCAGCCTCCCGATAACCAGGAAAAGGAACGACTAAATACATCCATTCCACAAAA
AGGAAAATGAGAAATCTGTTAGTTACCATTGAGAATGATACTCCTCTAGAGGAACCTCAAAAATATGTAG
ACATCAGTATTATTGCCCTTACTCGAAATCGGAGGACAAGGAGATGGTACACTTGTCCACTGTGTGGGAA
ACAGTTTAAATGAAAGTTCTTACCTATTCCCACCAGAGGACCCACTGGAGAAAAACCCTATGACTGT
AATCACTGTGGGAAAAGCTTCAATCATAAAACAAACCTCAATAAACATGAGCGAATTCATACAGGAGAGA
AACCTTATTCTGTTCTCAGTGTGGAAAAACTTCCGTCAGAATTCTCATCGGAGTCGTCATGAAGGAAT
CCATATAAGGGAGAAGATATTTAAGTGTCCAGAATGTGGGAAAACCTTCCCAAAGAAATGAGGAGTTTGTG
CTTCATCTGCAGAGTCATGAGGCTGAGAGACCATATGGTTGCAAAAAATGTGGGAGAAGATTTGGTCCGG
TGTCAAACCTGTACCCGGCATGAGAAAACCCACTCAGCCTGTAAGACCCGAAAGCAGAAG

ACGCGTACGCGGCCGCTCGAGCAGAAACTCATCTCAGAAGAGGATCTGGCAGCAAATGATATCCTGGATT
ACAAGGATGACGACGATAAGGTTTAA



[View online »](#)

Protein Sequence: >RC208779 protein sequence
Red=Cloning site Green=Tags(s)

MAAKVVPMPKPKQSFILRVPPDSKLGQDLLRDATNGPKTIHQVLVLEHFLTFLPKPSLVQPSQVKVETLV
 IMKDVSSSLQNRVHPRPLVKLLPKGVQKEQETVSLYKANKPEELVVFEDLNVFHCQECCVSLDPTQQLTS
 EKEDDSSVGEMLLVNGSNPEGEDPEREPVENEDYREKSSDDDEMSSLVSQPPDNQEKERLNTSIPQK
 RKMNRLLVTIENDTPEELSKYVDISIIALTRNRRTRRWYTCPLCGKQFNESSYLISHQRTHTGEKPYDC
 NHCCKSFNHKTNLNKHERIHTGEKPYSCSQCGKNFRQNSHRSRHEGIHIREKIFKCEPGKTFPKNEEFV
 LHLQSHEAERPYGCKKCGRRFGRLSNCTRHEKTHSACKTRKQK

TRTRPLEQKLISEEDLAANDILDYKDDDDKV

Chromatograms: https://cdn.origene.com/chromatograms/mk6526_a12.zip

Restriction Sites: SgfI-MluI

Cloning Scheme:

Cloning sites used for ORF Shuttling:



* The last codon before the Stop codon of the ORF

ACCN: NM_198087

ORF Size: 1410 bp

OTI Disclaimer: The molecular sequence of this clone aligns with the gene accession number as a point of reference only. However, individual transcript sequences of the same gene can differ through naturally occurring variations (e.g. polymorphisms), each with its own valid existence. This clone is substantially in agreement with the reference, but a complete review of all prevailing variants is recommended prior to use. [More info](#)

OTI Annotation: This clone was engineered to express the complete ORF with an expression tag. Expression varies depending on the nature of the gene.

Components: The ORF clone is ion-exchange column purified and shipped in a 2D barcoded Matrix tube containing 10ug of transfection-ready, dried plasmid DNA (reconstitute with 100 ul of water).

Reconstitution Method:

1. Centrifuge at 5,000xg for 5min.
2. Carefully open the tube and add 100ul of sterile water to dissolve the DNA.
3. Close the tube and incubate for 10 minutes at room temperature.
4. Briefly vortex the tube and then do a quick spin (less than 5000xg) to concentrate the liquid at the bottom.
5. Store the suspended plasmid at -20°C. The DNA is stable for at least one year from date of shipping when stored at -20°C.

RefSeq: [NM_198087.3](#)

RefSeq Size: 3179 bp

RefSeq ORF: 1185 bp

Locus ID: 7752

UniProt ID: [P98182](#)

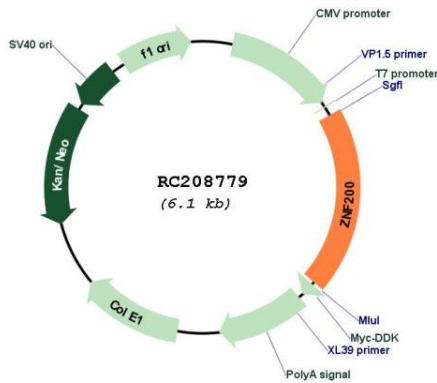
Cytogenetics: 16p13.3

Protein Families: Transcription Factors

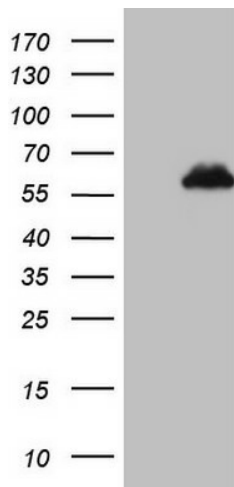
MW: 45.3 kDa

Gene Summary: Could have a role in spermatogenesis.[UniProtKB/Swiss-Prot Function]

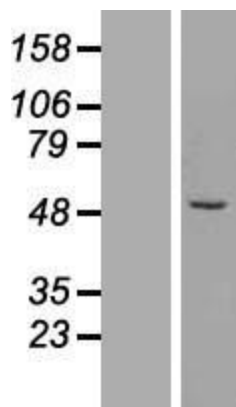
Product images:



Circular map for RC208779



HEK293T cells were transfected with the pCMV6-ENTRY control (Cat# [PS100001], Left lane) or pCMV6-ENTRY ZNF200 (Cat# RC208779, Right lane) cDNA for 48 hrs and lysed. Equivalent amounts of cell lysates (5 ug per lane) were separated by SDS-PAGE and immunoblotted with anti-ZNF200 (Cat# [TA808207])(1:2000). Positive lysates [LY405074] (100ug) and [LC405074] (20ug) can be purchased separately from OriGene.



Western blot validation of overexpression lysate (Cat# [LY405074]) using anti-DDK antibody (Cat# [TA50011-100]). Left: Cell lysates from untransfected HEK293T cells; Right: Cell lysates from HEK293T cells transfected with RC208779 using transfection reagent MegaTran 2.0 (Cat# [TT210002]).