

## Product datasheet for **RC208761**

### **RbAp48 (RBBP4) (NM\_005610) Human Tagged ORF Clone**

#### **Product data:**

Product Type:	Expression Plasmids
Product Name:	RbAp48 (RBBP4) (NM_005610) Human Tagged ORF Clone
Tag:	Myc-DDK
Symbol:	RbAp48
Synonyms:	lin-53; NURF55; RBAP48
Mammalian Cell Selection:	Neomycin
Vector:	pCMV6-Entry (PS100001)
E. coli Selection:	Kanamycin (25 ug/mL)



[View online »](#)

**ORF Nucleotide Sequence:**

>RC208761 ORF sequence  
 Red=Cloning site Blue=ORF Green=Tags(s)

TTTTGTAATACGACTCACTATAGGGCGGCCGGAATTCGTCGACTGGATCCGGTACCGAGGAGATCTGCC  
 GCC**CGGATCGCC**

ATGGCCGACAAGGAAGCAGCCTTCGACGACGCAGTGAAGAACGAGTGATCAACGAGGAATACAAAATAT  
 GGAAAAAGAACCCCTTTTCTTTATGATTTGGTGATGACCCATGCTCTGGAGTGGCCAGCCTAACTGC  
 CCAAGTGGCTTCCAGATGTAACCAGACCAGAAGGAAAGATTTTCAGCATTTCATCGACTTGTCTGGGACA  
 CACACATCGGATGAACAAAACCATCTTGTATAGCCAGTGTGCAGCTCCCTAATGATGATGCTCAGTTTG  
 ATGCGTCACTACGACAGTGAGAAAGGAGAATTTGGAGGTTTTGGTTCAGTTAGTGGAAAAATTGAAAT  
 AGAAATCAAGATCAACCATGAAGGAGAAGTAAACAGGGCCGTTATATGCCCCAGAACCCTTGTATCATC  
 GCAACAAAGACTCCTCCAGTGTCTTGTCTTTGACTATACAAAACATCCTTCTAAACCAGATCCTT  
 CTGGAGAGTGAACCCAGACTTGGCTCTCCGTGGACATCAGAAGGAAGGCTATGGCTTTCTTGGAAACC  
 AAATCTCAGTGGCACTTACTTAGTGCTTCAGATGACCATACCATCTGCCTGTGGGACATCAGTGCCGTT  
 CCAAGGAGGGAAAAGTGGTAGATGCGAAGACCATCTTTACAGGGCATACGGCAGTAGTAGAAGATGTTT  
 CCTGGCATCTACTCCATGAGTCTCTGTTGGGTGAGTTGCTGATGATCAGAACTTATGATTTGGGATAC  
 TCGTTCAAACAATACTTCAAACCAAGCCACTCAGTTGATGCTCACACTGCTGAAGTGAAGTGCCTTTCT  
 TTCAATCCTTATAGTGAGTTCATCTTGGCACAGGATCAGCTGACAAGACTGTTGCCTTGTGGGACTGA  
 GAAATCTGAACTTAAGTTGCATTCCTTTGAGTCACATAAGGATGAAATATTCCAGGTTCCAGTGGTCA  
 TCACAATGAGACTATTTAGCTTCCAGTGGTACTGATCGCAGACTGAATGCTGGGATTTAAGTAAAATT  
 GGAGAGGAACAATCCCCAGAAGATGCAGAAGACGGGCCACCAGAGTTGTTGTTTATTTCATGGTGGTCATA  
 CTGCCAAGATATCTGATTTCTCCTGGAATCCCAATGAACCTTGGGTGATTTGTTCTGTATCAGAAGACAA  
 TATCATGCAAGTGTGGCAAATGGCAGAGAACATTTATAATGATGAAGACCCTGAAGGAAGCGTGGATCCA  
 GAAGGACAAGGGTCC

**ACGCGT**ACGCGGCCGCTCGAGCAGAACTCATCTCAGAAGAGGATCTGGCAGCAAATGATATCCTGGATT  
 ACAAGGATGACGACGATAAGGTTTAA

**Protein Sequence:**

>RC208761 protein sequence  
 Red=Cloning site Green=Tags(s)

MADKEAAFDDAVEERVINEEYKIWKNTPFYDLVMTHALEWPSLTAQWLPDVTRPEGKDFSIHRLVLGT  
 HTSDEQNLHVIASVQLPNDDAQFDASHYDSEKGEFGGFGSVSGKIEIEIKINHEGEVNRARYMPQNPCII  
 ATKTPSSDVLVFDYTKHPSKPDPSGECNPDRLRGHQKEGYGLSWNPNLSGHLLSASDDHTICLWDISAV  
 PKEGKVVDAKTIFGTHTAVVEDVSWHLHESLFGSVADDQKLMIWDRSNNTSKPSHSVDAHTAEVNCLS  
 FNPYSEFILATGSADKTVALWDLRNLKLLHSFESHKDEIFQVQWSPHNETILASSGTDRLNVWDLSKI  
 GEEQSPEDAEDGPPPELLFIHGHTAKISDFSWNPNEPWVICSVSEDNIMQVWQMAENIYNDEDPEGSVDP  
 EGQGS

**TR**TRPLEQKLISEEDLAANDILDYKDDDDKV

**Chromatograms:**

[https://cdn.origene.com/chromatograms/mk6216\\_c06.zip](https://cdn.origene.com/chromatograms/mk6216_c06.zip)

**Restriction Sites:**

Sgfl-Mlul

**Cloning Scheme:**


**ACCN:** NM\_005610

**ORF Size:** 1275 bp

**OTI Disclaimer:** The molecular sequence of this clone aligns with the gene accession number as a point of reference only. However, individual transcript sequences of the same gene can differ through naturally occurring variations (e.g. polymorphisms), each with its own valid existence. This clone is substantially in agreement with the reference, but a complete review of all prevailing variants is recommended prior to use. [More info](#)

**OTI Annotation:** This clone was engineered to express the complete ORF with an expression tag. Expression varies depending on the nature of the gene.

**Components:** The ORF clone is ion-exchange column purified and shipped in a 2D barcoded Matrix tube containing 10ug of transfection-ready, dried plasmid DNA (reconstitute with 100 ul of water).

- Reconstitution Method:**
1. Centrifuge at 5,000xg for 5min.
  2. Carefully open the tube and add 100ul of sterile water to dissolve the DNA.
  3. Close the tube and incubate for 10 minutes at room temperature.
  4. Briefly vortex the tube and then do a quick spin (less than 5000xg) to concentrate the liquid at the bottom.
  5. Store the suspended plasmid at -20°C. The DNA is stable for at least one year from date of shipping when stored at -20°C.

**Note:** Plasmids are not sterile. For experiments where strict sterility is required, filtration with 0.22um filter is required.

**RefSeq:** [NM\\_005610.1](#), [NP\\_005601.1](#)

**RefSeq Size:** 7943 bp

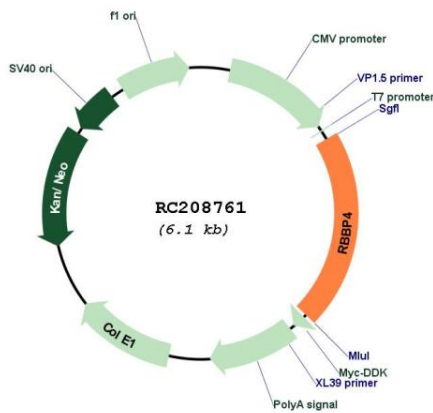
**RefSeq ORF:** 1278 bp

**Locus ID:** 5928

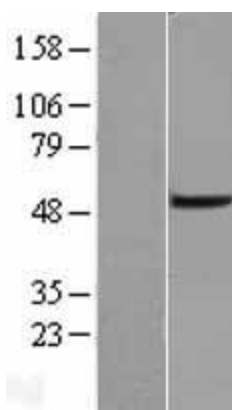
**UniProt ID:** [Q09028](#)  
**Cytogenetics:** 1p35.1  
**Domains:** WD40  
**Protein Families:** Druggable Genome, Transcription Factors  
**MW:** 47.7 kDa

**Gene Summary:** This gene encodes a ubiquitously expressed nuclear protein which belongs to a highly conserved subfamily of WD-repeat proteins. It is present in protein complexes involved in histone acetylation and chromatin assembly. It is part of the Mi-2 complex which has been implicated in chromatin remodeling and transcriptional repression associated with histone deacetylation. This encoded protein is also part of co-repressor complexes, which is an integral component of transcriptional silencing. It is found among several cellular proteins that bind directly to retinoblastoma protein to regulate cell proliferation. This protein also seems to be involved in transcriptional repression of E2F-responsive genes. Three transcript variants encoding different isoforms have been found for this gene. [provided by RefSeq, Sep 2008]

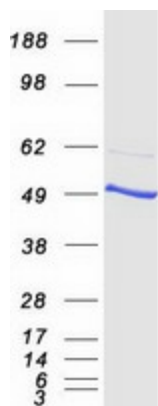
**Product images:**



Circular map for RC208761



Western blot validation of overexpression lysate (Cat# [LY417190]) using anti-DDK antibody (Cat# [TA50011-100]). Left: Cell lysates from untransfected HEK293T cells; Right: Cell lysates from HEK293T cells transfected with RC208761 using transfection reagent MegaTran 2.0 (Cat# [TT210002]).



Coomassie blue staining of purified RBBP4 protein (Cat# [TP308761]). The protein was produced from HEK293T cells transfected with RBBP4 cDNA clone (Cat# RC208761) using MegaTran 2.0 (Cat# [TT210002]).