

## Product datasheet for RC208759

### DPH5 (NM\_001077395) Human Tagged ORF Clone

#### Product data:

|                           |  |
|---------------------------|--|
| Product Type:             | Expression Plasmids  |
| Product Name:             | DPH5 (NM_001077395) Human Tagged ORF Clone                                     |
| Tag:                      | Myc-DDK  |
| Symbol:                   | DPH5   |
| Synonyms:                 | AD-018; CGI-30; HSPC143; NP015   |
| Mammalian Cell Selection: | Neomycin   |
| Vector:                   | pCMV6-Entry (PS100001)   |
| E. coli Selection:        | Kanamycin (25 ug/mL)   |
| ORF Nucleotide Sequence:  | >RC208759 representing NM_001077395<br>Red=Cloning site Blue=ORF Green=Tags(s) |

TTTTGTAATACGACTCACTATAGGGCGGCCGGAATTCGTCGACTGGATCCGGTACCGAGGAGATCTGCC  
GCC**CGGATCGCC**

ATGCTTTATCTCATCGGGTTGGGCTGGGAGATGCCAAGGACATCACAGTCAAGGGCCTGGAAGTTGTTA  
GACGCTGCAGTCGAGTGTATCTGGAAGCCTACACCTCAGTCCTAACTGTAGGGAAGGAAGCCTTGAAGA  
GTTTTATGGAAGAAAATTGGTTGTTGCTGATAGAGAAGAAGTGAACAAGAAGCAGATAATATTTAAAG  
GATGCTGATATCAGTGATGTTGCATTCCTGTGGTTGGTATCCATTTGGGGCCACAACACACAGTGATC  
TTGTTCTAAGAGCAACAAAGCTGGGAATTCCTTATAGAGTTATTCACAATGCCTCCATAATGAATGCTGT  
AGGCTGCTGTGGTTTACAGTTATATAAGTTGGAGAGACAGTTTCTATTGTTTTTGGACAGACACTTGG  
AGACCAGAAAGCTTCTTTGACAAAGTGAAGAAGAACAGACAAAATGGCATGCACACATTATGTTTACTAG  
ACATCAAAGTAAAGGAGCAGTCTTTGAAAAATCTAATCAAGGGAAGGAAGATCTATGAACCTCCACGGTA  
TATGAGTGTAACCAAGCAGCCAGCAGCTTCTGGAGATTGTTCAAAATCAAAGAATACGAGGAGAAGAA  
CCAGCAGTTACCGAGGAGACACTTTGTGTTGGCTTAGCCAGGGTTGGAGCCGACGACCAGAAAATTCGAG  
CAGGCACCTTAAGGCAAATGTGCACTGTGGACTGGGAGAACCATTGCATTCCTTGATCATCACAGGAGG  
CAGCATACATCCAATGGAGATGGAGATGCTAAGTCTGTTTTCCATACCAGAAAATAGCTCAGAATCTCAA  
AGCATCAATGGACTT

**ACGCGT**ACGCGGCCGCTCGAGCAGAAACTCATCTCAGAAGAGGATCTGGCAGCAAATGATATCCTGGATT  
ACAAGGATGACGACGATAAGGTTTAA



[View online »](#)

**Protein Sequence:** >RC208759 representing NM\_001077395  
Red=Cloning site Green=Tags(s)

MLYLIGLGLGDAKDITVKGLEVVRRCSRVYLEAYTSVLTVGKEALEEFYGRKLVVADREEVEQEADNILK  
 DADISDVAFLVVGDPFGATTTHSDLVLRATKLGIPYRVIHNASIMNAVGCCGLQLYKFGETVSIVFWTDTW  
 RPESFFDKVKKNRQNGMHTLCLLDIKVKEQSLENLIKGRKIYEPYRMSVNQAAQQLLEIVQNQRIRGEE  
 PAVTEETLCVGLARVGGDDQKIAAGTLRQMCTVDLGEPLHSLIITGGSIHPEMEMLSLFSIPENSSESQ  
 SINGL

TRTRPLEQKLISEEDLAANDILDYKDDDDKV

**Chromatograms:** [https://cdn.origene.com/chromatograms/ja1485\\_g05.zip](https://cdn.origene.com/chromatograms/ja1485_g05.zip)

**Restriction Sites:** SgfI-MluI

**Cloning Scheme:**



**ACCN:** NM\_001077395

**ORF Size:** 855 bp

**OTI Disclaimer:** The molecular sequence of this clone aligns with the gene accession number as a point of reference only. However, individual transcript sequences of the same gene can differ through naturally occurring variations (e.g. polymorphisms), each with its own valid existence. This clone is substantially in agreement with the reference, but a complete review of all prevailing variants is recommended prior to use. [More info](#)

**OTI Annotation:** This clone was engineered to express the complete ORF with an expression tag. Expression varies depending on the nature of the gene.

**Components:** The ORF clone is ion-exchange column purified and shipped in a 2D barcoded Matrix tube containing 10ug of transfection-ready, dried plasmid DNA (reconstitute with 100 ul of water).

**Reconstitution Method:**

1. Centrifuge at 5,000xg for 5min.
2. Carefully open the tube and add 100ul of sterile water to dissolve the DNA.
3. Close the tube and incubate for 10 minutes at room temperature.
4. Briefly vortex the tube and then do a quick spin (less than 5000xg) to concentrate the liquid at the bottom.
5. Store the suspended plasmid at -20°C. The DNA is stable for at least one year from date of shipping when stored at -20°C.

**Note:** Plasmids are not sterile. For experiments where strict sterility is required, filtration with 0.22um filter is required.

**RefSeq:** [NM\\_001077395.1](#), [NP\\_001070863.1](#)

**RefSeq Size:** 1807 bp

**RefSeq ORF:** 855 bp

**Locus ID:** 51611

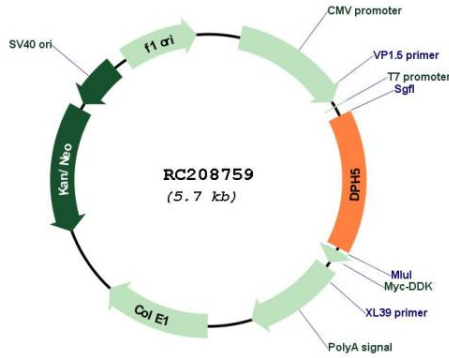
**UniProt ID:** [Q9H2P9](#)

**Cytogenetics:** 1p21.2

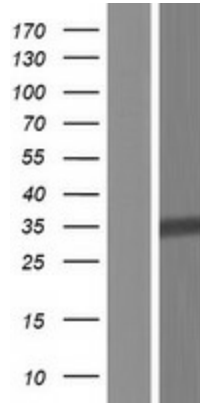
**MW:** 31.4 kDa

**Gene Summary:** This gene encodes a component of the diphthamide synthesis pathway. Diphthamide is a post-translationally modified histidine residue found only on translation elongation factor 2. It is conserved from archaeobacteria to humans, and is targeted by diphtheria toxin and Pseudomonas exotoxin A to halt cellular protein synthesis. The yeast and Chinese hamster homologs of this protein catalyze the trimethylation of the histidine residue on elongation factor 2, resulting in a diphthine moiety that is subsequently amidated to yield diphthamide. Multiple transcript variants encoding different isoforms have been found for this gene. [provided by RefSeq, Jul 2008]

Product images:



Circular map for RC208759



Western blot validation of overexpression lysate (Cat# [LY421406]) using anti-DDK antibody (Cat# [TA50011-100]). Left: Cell lysates from untransfected HEK293T cells; Right: Cell lysates from HEK293T cells transfected with RC208759 using transfection reagent MegaTran 2.0 (Cat# [TT210002]).