

Product datasheet for **RC208758**

LIN7C (NM_018362) Human Tagged ORF Clone

Product data:

Product Type: Expression Plasmids
Product Name: LIN7C (NM_018362) Human Tagged ORF Clone
Tag: Myc-DDK
Symbol: LIN7C
Synonyms: LIN-7-C; LIN-7C; MALS-3; MALS3; VELI3
Mammalian Cell Selection: Neomycin
Vector: pCMV6-Entry (PS100001)
E. coli Selection: Kanamycin (25 ug/mL)
ORF Nucleotide Sequence: >RC208758 representing NM_018362
 Red=Cloning site Blue=ORF Green=Tags(s)

TTTTGTAATACGACTCACTATAGGGCGGCCGGAATTCGTCGACTGGATCCGGTACCGAGGAGATCTGCC
 GCC**CGATCGCC**

ATGGCGCGCTAGGGGAACCCGTGCGGCTGGAGAGAGATATTTGTAGAGCAATTGAATTATTGGAAAAAC
 TACAAAGGAGTGGAGAAGTACCACCACAGAACTTCAGGCTTTGCAAAGAGTCCTTCAAAGTGAATTCTG
 CAATGCTGTGAGAGAGGTATATGAACATGTCTATGAGACTGTGGACATCAGTAGCAGTCTGAAGTGA
 GCGAACGCTACTGCAAAGGCTACTGTTGCTGCATTTGCTGCCAGTGAAGGACATTCTCATCTCGAGTTG
 TTGAGCTACCAAAAACAGAAGAGGGCCTTGGATTCAATATTATGGGAGGCAAAGAACAAAACCTCCAAT
 CTATATATCCCGAATAATTCCAGGTGGAATTGCTGATAGACATGGGGCCCTCAAACGTGGAGATCAACTC
 CTCTCTGTTAATGGAGTGAGTGTGAAGGAGAACATCATGAAAAAGCTGTAGAAGTGTGAAAGCCGCAC
 AAGGAAAGGTTAAATTAGTGGTACGATACACCCAAAGTCTTAGAAGAAATGGAGTCGCGCTTTGAAAA
 AATGAGATCAGCAAAACGCAGGCAACAGACC

ACGCGTACGCGGCCGCTCGAGCAGAACTCATCTCAGAAGAGGATCTGGCAGCAATGATATCCTGGATT
 ACAAGGATGACGACGATAAGGTTTAA

Protein Sequence: >RC208758 representing NM_018362
 Red=Cloning site Green=Tags(s)

MAALGEPVRLERDLCRAIELLEKLRSGEVPPQKLQALQVRVQSEFCNAVREYEHVYETVDISSSPEVR
 ANATAKATVAFAASEGSHPRVVELPKTEEGLGFNIMGGKEQNSPIYISRIIPGGIADRHGGLKRGDQL
 LSVNGVSVEGHEHKAPELLKAAQGVKLVVRYTPKVL EEMESRF EKMRSAKRRQQT

TRTRPLEQKLISEEDLAANDILDYKDDDDKV



[View online »](#)

Chromatograms: https://cdn.origene.com/chromatograms/mg3462_f06.zip

Restriction Sites: SgfI-MluI

Cloning Scheme:



ACCN: NM_018362

ORF Size: 591 bp

OTI Disclaimer: The molecular sequence of this clone aligns with the gene accession number as a point of reference only. However, individual transcript sequences of the same gene can differ through naturally occurring variations (e.g. polymorphisms), each with its own valid existence. This clone is substantially in agreement with the reference, but a complete review of all prevailing variants is recommended prior to use. [More info](#)

OTI Annotation: This clone was engineered to express the complete ORF with an expression tag. Expression varies depending on the nature of the gene.

Components: The ORF clone is ion-exchange column purified and shipped in a 2D barcoded Matrix tube containing 10ug of transfection-ready, dried plasmid DNA (reconstitute with 100 ul of water).

Reconstitution Method:

1. Centrifuge at 5,000xg for 5min.
2. Carefully open the tube and add 100ul of sterile water to dissolve the DNA.
3. Close the tube and incubate for 10 minutes at room temperature.
4. Briefly vortex the tube and then do a quick spin (less than 5000xg) to concentrate the liquid at the bottom.
5. Store the suspended plasmid at -20°C. The DNA is stable for at least one year from date of shipping when stored at -20°C.

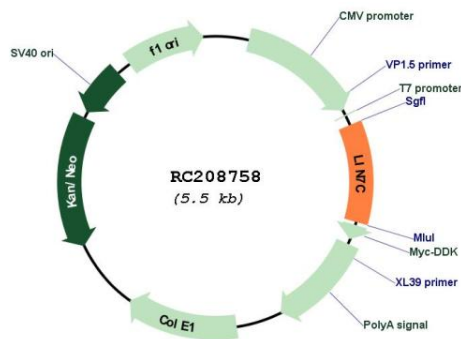
Note: Plasmids are not sterile. For experiments where strict sterility is required, filtration with 0.22um filter is required.

RefSeq: [NM_018362.4](#)

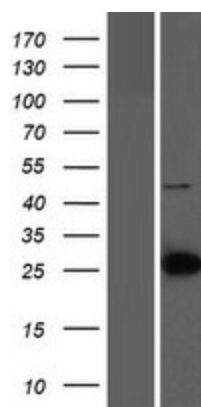
RefSeq Size: 4729 bp

| | |
|-------------------|--|
| RefSeq ORF: | 594 bp |
| Locus ID: | 55327 |
| UniProt ID: | <u>Q9NUP9</u> |
| Cytogenetics: | 11p14.1 |
| Domains: | PDZ, L27 |
| Protein Families: | Druggable Genome |
| MW: | 21.7 kDa |
| Gene Summary: | Plays a role in establishing and maintaining the asymmetric distribution of channels and receptors at the plasma membrane of polarized cells. Forms membrane-associated multiprotein complexes that may regulate delivery and recycling of proteins to the correct membrane domains. The tripartite complex composed of LIN7 (LIN7A, LIN7B or LIN7C), CASK and APBA1 may have the potential to couple synaptic vesicle exocytosis to cell adhesion in brain. Ensures the proper localization of GRIN2B (subunit 2B of the NMDA receptor) to neuronal postsynaptic density and may function in localizing synaptic vesicles at synapses where it is recruited by beta-catenin and cadherin. Required to localize Kir2 channels, GABA transporter (SLC6A12) and EGFR/ERBB1, ERBB2, ERBB3 and ERBB4 to the basolateral membrane of epithelial cells.[UniProtKB/Swiss-Prot Function] |

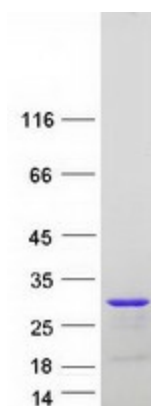
Product images:



Circular map for RC208758



Western blot validation of overexpression lysate (Cat# [LY413114]) using anti-DDK antibody (Cat# [TA50011-100]). Left: Cell lysates from untransfected HEK293T cells; Right: Cell lysates from HEK293T cells transfected with RC208758 using transfection reagent MegaTran 2.0 (Cat# [TT210002]).



Coomassie blue staining of purified LIN7C protein (Cat# [TP308758]). The protein was produced from HEK293T cells transfected with LIN7C cDNA clone (Cat# RC208758) using MegaTran 2.0 (Cat# [TT210002]).