

Product datasheet for **RC208754**

MAG (NM_002361) Human Tagged ORF Clone

Product data:

Product Type:	Expression Plasmids
Product Name:	MAG (NM_002361) Human Tagged ORF Clone
Tag:	Myc-DDK
Symbol:	MAG
Synonyms:	GMA; S-MAG; SIGLEC-4A; SIGLEC4A; SPG75
Mammalian Cell Selection:	Neomycin
Vector:	pCMV6-Entry (PS100001)
E. coli Selection:	Kanamycin (25 ug/mL)



[View online »](#)

ORF Nucleotide Sequence:

>RC208754 ORF sequence
 Red=Cloning site Blue=ORF Green=Tags(s)

TTTTGTAATACGACTCACTATAGGGCGGCCGGAATTCGTCGACTGGATCCGGTACCGAGGAGATCTGCC
 GCC**CGGATCGCC**

ATGATATTCTCACGGCACTGCCTCTGTTCTGGATTATGATTTACGCCTCCCGAGGGGGTACTGGGGT
 CCTGGATGCCCTCGTCCATCTCGGCCTCGAAGGCACGTGCGTCTCCATCCCCTGCCGCTTTGACTTCCC
 GGATGAGCTGCGGCCCGCTGTGGTGCATGGTGTCTGGTACTTCAATAGCCCTACCCCAAGAACTACCCC
 CCGGTGGTCTTCAAGTCGCGCACCAAGTAGTCCACGAGAGCTTCCAGGGCCGACGCCGCTCTGGGGG
 ACCTGGGCTGCGAACTGCACCCTCTGCTCAGCAACGTGAGCCCGAGCTGGGCGGGAAGTACTACTT
 CCGTGGGACCTGGGCGGCTACAACCAGTACACCTTCTCAGAGCACAGTGTCTGGATATCGTCAACACC
 CCCAACATCGTGGTGCCCCAGAGGTGGTGGCAGGCACGGAGGTGGAGGTGAGTGCATGGTGCCGGACA
 ACTGCCAGAGCTGCGCCCTGAGCTGAGCTGGTGGGCCACGAGGGGCTGGGGAGCCCGCTGTGCTGGG
 CCGGCTGCGGGAGGACGAGGGCACCTGGGTGCAGGTGTACTGCTGCACCTTCGTGCCACGAGGGAGGCC
 AACGGCCACAGGCTGGGCTGCCAGGCCTCTTCCCAACACCACCTGCAGTTTCGAGGGCTACGCCAGCA
 TGGACGTCAAGTACCCCGGTGATTGTGGAGATGAACCTCTCGTGGAGGCCATCGAGGGCTCCCACGT
 GAGCTGCTCTGTGGGCTGACAGCAACCCCGCCGCTGCTGACCTGGATGCGGGACGGGACAGTCCCTC
 CGGGAGGCGGTGGCCGAGAGCCTGCTCCTGGAGCTGGAGGAGGTGACCCCGCCGAAGACGGCGTCTATG
 CCTGCCTGGCCGAGAATGCCTATGGCCAGGACAACCGCACCGTGGGGCTCAGTGTATGTATGCACCCTG
 GAAGCCAAACAGTGAACGGGACAATGGTGGCCGTAGAGGGGAGACGGTCTCTATCTTGTGCTCCACACAG
 AGCAACCCGACCTATTCTCACCATCTCAAGGAGAAGCAGATCCTGTCCACGGTATCTACGAGAGCG
 AGCTGCAGCTGGAGCTGCCGCCGTGTACCCGAGGATGATGGAGAGTACTGGTGTGGTGAGAACCA
 GTATGGCCAGAGGGCCACTGCCTTCAACCTGTCTGTGGAGTTCGCCCTGTGCTCCTCGGAGTCCCAC
 TGC GCGGACGCCGAGACACGGTGCAGTGCCTGTGCGTGGTGAAGTCCAACCCGAGCCGCTCCGTGGCCT
 TTGAGCTGCCATCGCGCAATGTGACCGTGAACGAGAGCGAGCGGGAGTTCGTGTACTCGGAGCGCAGCGG
 CCTCGTCTCACCAGCATCCTCACGCTGCGGGGACAGGCCAGGCCCGCCCGCTCATCTGCACCGGG
 AGGAACCTCTATGGCGCAAGAGCCTGGAGCTGCCCTTCCAGGGAGCCATCGACTGATGTGGGCAAGA
 TCGGGCCTGTGGGCGCCGTGGTGCCTTTGCCATCCTGATTGCCATCGTCTGCTACATTACCAGACAGC
 CAGGAAAAGAACGTGACAGAGAGCCCCAGCTTCTCGGCAGGGGACAACCCTCCCGTCTGTTCAGCAGC
 GACTTCCGCATCTCTGGGACACCAGAGAAGTACGAGAGCGAGAGGCGCCTGGGATCTGAGAGGAGGCTGC
 TGGGCCTTCGGGGTGAAGCCCCAGAGCTGGACCTGAGCTATTCTACTCGGACCTGGGAAACGGCCAC
 CAAGGACAGCTACACGCTGACGGAGGAGCTAGCTGAGTATGCTGAAATCCGGGTCAA

ACGCGTACGCGGCCGCTCGAGCAGAACTCATCTCAGAAGAGGATCTGGCAGCAAATGATATCCTGGATT
 ACAAGGATGACGACGATAAGGTTTAA

Protein Sequence:

>RC208754 protein sequence
 Red=Cloning site Green=Tags(s)

MIFLTALPLFWIMISASRGGHWGAWMPSSISAFEGTCVSI PCRFD PDEL RPAVVHGVVYFNSPYKKNYP
 PVVFKSRTQVVHESFQGRSRLLDGLLRNCTLLLSNVSPELGGKYYFRGDLGGYNQYTFSEHSVLDIVNT
 PNIVVPPEVVAGTEVEVSCMVPDNCPELRPELSWL GHEGLGEPAVLGRLEDEGTWVQVSLLFVPTREA
 NGHRLGCQASFPNTTLQFEGYASMDVKYPPVIVEMNSSVEAIEGSHVSLLCGADSNPPPLLTWMRDGTVL
 REAVAESLLELEEVTPAEDGVYACLAENAYGQDNRTVGLSVMYAPWKPTVNGTMVAVEGETVSILCSTQ
 SNPDPILTIFKEKQILSTVIYESELQLELPAVSPEDDGEYWCVAENQYQQRATAFNL SVEFAPVLLLESH
 CAAARDTVQCLCVKSNPEPSVAFELPSRNVTVNESEREFVYSERSGLVLT SILTLRQQAAPRVICTA
 RNLYGAKSLELFPQGAHRLMWAKIGPVGAVVAFAILIAIVCYITQTRRKNVTESPFSAGDNPPVLFSS
 DFRISGAPEKYESERRLGSERRLLGLRGEPPDL SYSHSDLGKRPTKDSYTLTEELAEYAEIRVK

TRTRPLEQKLI SEEDLAANDILDYKDDDDKV

Chromatograms: https://cdn.origene.com/chromatograms/mk6791_a12.zip

Restriction Sites: SgfI-MluI

Cloning Scheme:



ACCN: NM_002361

ORF Size: 1878 bp

OTI Disclaimer: Due to the inherent nature of this plasmid, standard methods to replicate additional amounts of DNA in E. coli are highly likely to result in mutations and/or rearrangements. Therefore, OriGene does not guarantee the capability to replicate this plasmid DNA. Additional amounts of DNA can be purchased from OriGene with batch-specific, full-sequence verification at a reduced cost. Please contact our customer care team at custsupport@origene.com or by calling 301.340.3188 option 3 for pricing and delivery.

The molecular sequence of this clone aligns with the gene accession number as a point of reference only. However, individual transcript sequences of the same gene can differ through naturally occurring variations (e.g. polymorphisms), each with its own valid existence. This clone is substantially in agreement with the reference, but a complete review of all prevailing variants is recommended prior to use. [More info](#)

OTI Annotation: This clone was engineered to express the complete ORF with an expression tag. Expression varies depending on the nature of the gene.

Components: The ORF clone is ion-exchange column purified and shipped in a 2D barcoded Matrix tube containing 10ug of transfection-ready, dried plasmid DNA (reconstitute with 100 ul of water).

Reconstitution Method:

1. Centrifuge at 5,000xg for 5min.
2. Carefully open the tube and add 100ul of sterile water to dissolve the DNA.
3. Close the tube and incubate for 10 minutes at room temperature.
4. Briefly vortex the tube and then do a quick spin (less than 5000xg) to concentrate the liquid at the bottom.
5. Store the suspended plasmid at -20°C. The DNA is stable for at least one year from date of shipping when stored at -20°C.

RefSeq: [NM_002361.4](#)

RefSeq Size: 2458 bp

RefSeq ORF: 1881 bp

Locus ID: 4099

UniProt ID: [P20916](#)

Cytogenetics: 19q13.12

Domains: ig, IGc2, IG

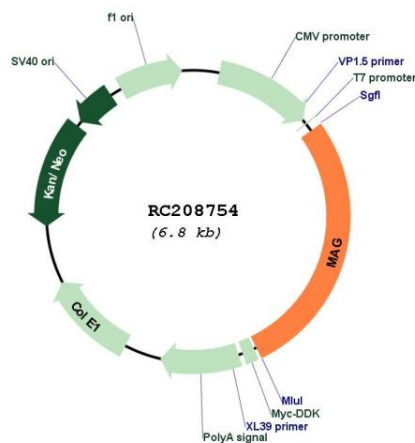
Protein Families: Druggable Genome, Transmembrane

Protein Pathways: Cell adhesion molecules (CAMs)

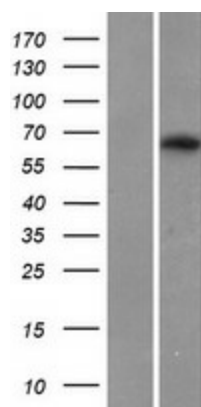
MW: 69.1 kDa

Gene Summary: The protein encoded by this gene is a type I membrane protein and member of the immunoglobulin superfamily. It is thought to be involved in the process of myelination. It is a lectin that binds to sialylated glycoconjugates and mediates certain myelin-neuron cell-cell interactions. Three alternatively spliced transcripts encoding different isoforms have been described for this gene. [provided by RefSeq, Nov 2010]

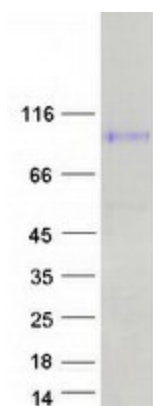
Product images:



Circular map for RC208754



Western blot validation of overexpression lysate (Cat# [LY419374]) using anti-DDK antibody (Cat# [TA50011-100]). Left: Cell lysates from untransfected HEK293T cells; Right: Cell lysates from HEK293T cells transfected with RC208754 using transfection reagent MegaTran 2.0 (Cat# [TT210002]).



Coomassie blue staining of purified MAG protein (Cat# [TP308754]). The protein was produced from HEK293T cells transfected with MAG cDNA clone (Cat# RC208754) using MegaTran 2.0 (Cat# [TT210002]).