

Product datasheet for **RC208751**

RHOC (NM_001042678) Human Tagged ORF Clone

Product data:

Product Type:	Expression Plasmids
Product Name:	RHOC (NM_001042678) Human Tagged ORF Clone
Tag:	Myc-DDK
Symbol:	RHOC
Synonyms:	ARH9; ARHC; H9; RHOH9
Mammalian Cell Selection:	Neomycin
Vector:	pCMV6-Entry (PS100001)
E. coli Selection:	Kanamycin (25 ug/mL)
ORF Nucleotide Sequence:	>RC208751 ORF sequence Red=Cloning site Blue=ORF Green=Tags(s)

TTTTGTAATACGACTCACTATAGGGCGGCCGGAATTCGTCGACTGGATCCGGTACCGAGGAGATCTGCC
 GCC**CGATCGC**C

ATGGCTGCAATCCGAAAGAAGCTGGTGATCGTTGGGGATGGTGCCTGTGGGAAGACCTGCCTCCTCATCG
 TCTTCAGCAAGGATCAGTTCCGGAGGTCTACGTCCCTACTGTCTTTGAGAACTATATGCGGACATTGA
 GGTGGACGGCAAGCAGGTGGAGCTGGCTCTGTGGGACACAGCAGGGCAGGAAGACTATGATCGACTGCGG
 CCTCTCTCTACCCGGACACTGATGTCATCCTCATGTGCTTCTCCATCGACAGCCCTGACAGCCTGGAAA
 ACATTCCTGAGAAGTGGACCCCAGAGGTGAAGCACTTCTGCCCCAACGTGCCCATCATCCTGGTGGGAA
 TAAGAAGGACCTGAGGCAAGACGAGCACACCAGGAGAGAGCTGGCCAAGATGAAGCAGGAGCCCGTTTCGG
 TCTGAGGAAGGCCGGGACATGGCGAACCAGATCAGTGCCTTTGGCTACCTTGAGTGCTCAGCCAAGACCA
 AGGAGGGAGTGCGGGAGGTGTTTGAGATGGCCACTCGGGCTGGCTCCAGGTCCGCAAGAACAAGCGTCG
 GAGGGGCTGTCCCATTCTC

ACGCGTACGCGGCCGCTCGAGCAGAACTCATCTCAGAAGAGGATCTGGCAGCAAATGATATCCTGGATT
 ACAAGGATGACGACGATAAGGTTTAA

Protein Sequence:	>RC208751 protein sequence Red=Cloning site Green=Tags(s)
-------------------	--

MAAIRKKLVIVGDGACGKTCLLIVFSKDQFPEVYVPTVFENYIADIEVDGKQVELALWDTAGQEDYDRLR
 PLSYPD TDVILMCF SIDSPD SLENIPEKWTPEVKHFCPNVPIILVGNKKDLRQDEHTRRELAKMKQEPVR
 SEEGRDMANRISAFGYLECSAKTKEGVREVFEMATRAGLQVRKNKRRRGCPIL

TRTRPLEQKLISEEDLAANDILDYKDDDDKV


[View online »](#)

Chromatograms: https://cdn.origene.com/chromatograms/mk6119_f10.zip

Restriction Sites: SgfI-MluI

Cloning Scheme:



ACCN: NM_001042678

ORF Size: 579 bp

OTI Disclaimer: The molecular sequence of this clone aligns with the gene accession number as a point of reference only. However, individual transcript sequences of the same gene can differ through naturally occurring variations (e.g. polymorphisms), each with its own valid existence. This clone is substantially in agreement with the reference, but a complete review of all prevailing variants is recommended prior to use. [More info](#)

OTI Annotation: This clone was engineered to express the complete ORF with an expression tag. Expression varies depending on the nature of the gene.

Components: The ORF clone is ion-exchange column purified and shipped in a 2D barcoded Matrix tube containing 10ug of transfection-ready, dried plasmid DNA (reconstitute with 100 ul of water).

Reconstitution Method:

1. Centrifuge at 5,000xg for 5min.
2. Carefully open the tube and add 100ul of sterile water to dissolve the DNA.
3. Close the tube and incubate for 10 minutes at room temperature.
4. Briefly vortex the tube and then do a quick spin (less than 5000xg) to concentrate the liquid at the bottom.
5. Store the suspended plasmid at -20°C. The DNA is stable for at least one year from date of shipping when stored at -20°C.

Note: Plasmids are not sterile. For experiments where strict sterility is required, filtration with 0.22um filter is required.

RefSeq: [NM_001042678.1](#), [NP_001036143.1](#)

RefSeq Size: 1346 bp

RefSeq ORF: 582 bp

Locus ID: 389

UniProt ID: [P08134](#)

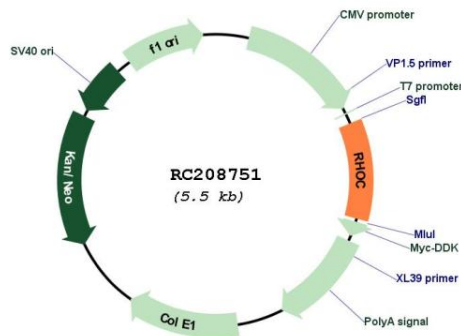
Cytogenetics: 1p13.2

Protein Families: Druggable Genome

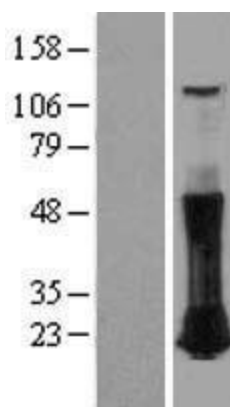
MW: 22 kDa

Gene Summary: This gene encodes a member of the Rho family of small GTPases, which cycle between inactive GDP-bound and active GTP-bound states and function as molecular switches in signal transduction cascades. Rho proteins promote reorganization of the actin cytoskeleton and regulate cell shape, attachment, and motility. The protein encoded by this gene is prenylated at its C-terminus, and localizes to the cytoplasm and plasma membrane. It is thought to be important in cell locomotion. Overexpression of this gene is associated with tumor cell proliferation and metastasis. Multiple alternatively spliced variants, encoding the same protein, have been identified. [provided by RefSeq, Jul 2008]

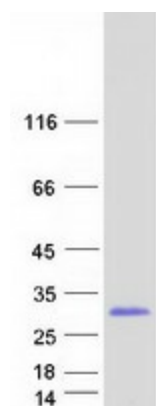
Product images:



Circular map for RC208751



Western blot validation of overexpression lysate (Cat# [LY403579]) using anti-DDK antibody (Cat# [TA50011-100]). Left: Cell lysates from untransfected HEK293T cells; Right: Cell lysates from HEK293T cells transfected with [RC217556] using transfection reagent MegaTran 2.0 (Cat# [TT210002]).



Coomassie blue staining of purified RHOC protein (Cat# [TP308751]). The protein was produced from HEK293T cells transfected with RHOC cDNA clone (Cat# RC208751) using MegaTran 2.0 (Cat# [TT210002]).