

Product datasheet for **RC208747**

MFAP1 (NM_005926) Human Tagged ORF Clone

Product data:

Product Type:	Expression Plasmids
Product Name:	MFAP1 (NM_005926) Human Tagged ORF Clone
Tag:	Myc-DDK
Symbol:	MFAP1
Synonyms:	AMP
Mammalian Cell Selection:	Neomycin
Vector:	pCMV6-Entry (PS100001)
E. coli Selection:	Kanamycin (25 ug/mL)



[View online »](#)

ORF Nucleotide Sequence:

>RC208747 ORF sequence
 Red=Cloning site Blue=ORF Green=Tags(s)

TTTTGTAATACGACTCACTATAGGGCGGCCGGAATTCGTCGACTGGATCCGGTACCGAGGAGATCTGCC
 GCC**GCGATCGCC**

ATGTCGGTCCCAAGCGCTCTCATGAAGCAACCGCCATTCACTACGGCTGGGGCGTCCCAAGTTCGCA
 ATGAGAAAAGTGAGATTTCAATGAAAAAGTGAAGGTAAGCGTTATGTGTCCGGAAAAAGGCCAGACTA
 TGCCCTATGGAGTCTCAGATGAGGAGGATGAAGAATTTCAAGTTCATTAAAGAAAGCCAAAAGAACAGAA
 GCAGAGCCTGAGGAACAGGAGGAGGATTCACAGTGACCCCGGCTACGGCGTTACAGAACCGTATTA
 GTGAAGATGTGGAAGAGAGATTGGCTCGACATCGAAAAATAGTGGAACTGAAGTGGTAGGAGAGAGTGA
 CTCAGAAGTAGAAGGAGATGCTTGGCGCATGGAACGAGAAGACAGCAGTGAAGAAGAGGAGGAGAAATT
 GATGATGAGGAAATAGAGCGCGCGTGGCATGATGCGTCAGCGAGCACAGGAGAGAAAAATGAAGAGA
 TGAAGTCATGGAAGTGAAGATGAGGGTCGTTCTGGAGAGGAGTCAAGATCAGAGTCTGAGTATGAAGA
 GTACACAGACAGTGAAGATGAGATGGAGCCTCGCCTTAAGCCAGTCTTCATTGAAAGAAGGACCGAGTG
 ACAGTTCAAGAAGCTGAAGCCGAAGCATTGAAACAGAAGGAGCTGGAGCAGGAAGCAAAACGCATGGCTG
 AGGAAAGGCGCAAGTACACACTCAAGATTGTCGAAGAGGAAACAAAAAGAGCTGGAAGAGAACAAGCG
 ATCCCTGGCTGCATTGGATGCACTCAATACTGATGATGAAAAATGATGAGGAGGAATATGAGGCATGGAAA
 GTTCGAGAGCTAAAAAGAATCAAGAGGGACAGAGAAGATCGAGAAGCGCTTGAGAAGGAGAAAGCAGAAA
 TTGAACGCATGCGAAACCTGACTGAGGAAGAGAGGAGAGCTGAACCTCGGGCAAACGGCAAAGTCATTAC
 CAACAAAGCTGTTAAGGGCAAATACAAGTCTTACAGAAGTATTACCCGGGTGCCTTCTTATGGAT
 GAGGATGAAGAAGTATAACAAGAGAGATTCAGCGCTCCTACCCTGGAGGATCATTCAATAAAACCATTC
 TTCCTAAAGTCATGCAGGTCAAGAACTTTGGACGCTCAGGTCGCACCAAATACACTCACCTTGTGGATCA
 AGATACCACCTCCTTTGACTCAGCTTGGGGCCAAGAGAGTGCCCAAGCAACAAAGTCTTCAAACAAAAG
 GCAGCTGGGGTACGAGATGTATTTGAGCGCCATCTGCCAAGAAGCGGAAAACCTACC

ACGCGTACGCGCGCGCTCGAGCAGAAACTCATCTCAGAAGAGGATCTGGCAGCAAATGATATCCTGGATT
 ACAAGGATGACGACGATAAGGTTTAA

Protein Sequence:

>RC208747 protein sequence
 Red=Cloning site Green=Tags(s)

MSVPSALMKQPPIQSTAGAVPVRNEKGEISMEKVKVKRYVSGKRPDYAPMESSDEEDEFQFIKKAKEQE
 AEPEEQEEDSSDPRLRRLQNRISEDVEERLARHRKIVEPEVVGESDSEVEGDWRMEREDSSEEEEEIE
 DDEEIERRRGMMRQRAQERKNEEMVMEVEDEGRSGEESSESEYEEYDSEDEMEPRLKPVFIRKKDRV
 TVQEREAELKQKELEQEAKRMAEERRKYTLKIVEEETKKELEENKRSLAALDALNTDDEENDEEYEA
 WKVRELKRIKRDREDALEKEKAEIERMRNLTEEERRAELRANGKVIITNKAVKGYKFLQKYHRGAFFMD
 EDEEVYKRDFSAPTLEDHFNKILPKVMQVKNFGRSGRTKYTHLVDQDTSFDSAWGQESAQNTKFFKQK
 AAGVRDVFERPSAKKRKTT

TRTRPLEQKLISEEDLAANDILDYKDDDDKV

Chromatograms:

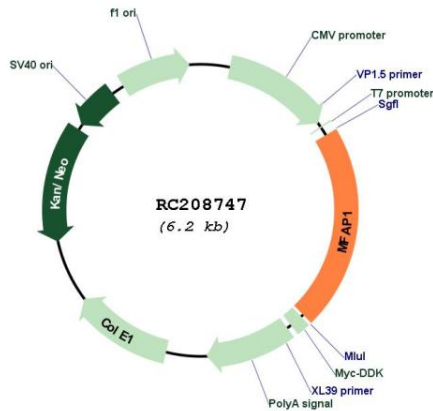
https://cdn.origene.com/chromatograms/mk6092_b01.zip

Restriction Sites:

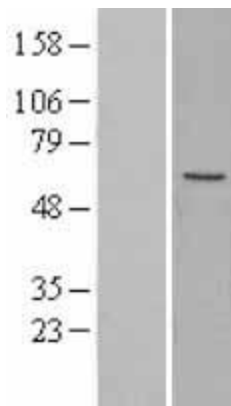
SgfI-MluI

Protein Families: Secreted Protein
MW: 52 kDa
Gene Summary: Involved in pre-mRNA splicing as a component of the spliceosome.[UniProtKB/Swiss-Prot Function]

Product images:



Circular map for RC208747



Western blot validation of overexpression lysate (Cat# [LY401800]) using anti-DDK antibody (Cat# [TA50011-100]). Left: Cell lysates from untransfected HEK293T cells; Right: Cell lysates from HEK293T cells transfected with RC208747 using transfection reagent MegaTran 2.0 (Cat# [TT210002]).