

Product datasheet for **RC208741**

UBE2C (NM_007019) Human Tagged ORF Clone

Product data:

Product Type: Expression Plasmids
Product Name: UBE2C (NM_007019) Human Tagged ORF Clone
Tag: Myc-DDK
Symbol: UBE2C
Synonyms: dj447F3.2; UBCH10
Mammalian Cell Selection: Neomycin
Vector: pCMV6-Entry (PS100001)
E. coli Selection: Kanamycin (25 ug/mL)
ORF Nucleotide Sequence: >RC208741 ORF sequence
Red=Cloning site Blue=ORF Green=Tags(s)

TTTTGTAATACGACTCACTATAGGGCGCCGGGAATTCGTCGACTGGATCCGGTACCGAGGAGATCTGCC
GCC**CGATCGCC**

ATGGCTTCCAAAACCGCGACCCAGCCGCCACTAGCGTCGCCGCCCGTAAAGGAGCTGAGCCGAGCG
GGGGCGCCCGCCGGGTCCGGTGGGCAAAGGCTACAGCAGGAGCTGATGACCCTCATGATGTCTGGCGA
TAAAGGGATTTCTGCCTTCCTGAATCAGACAACCTTTTCAAATGGGTAGGGACCATCCATGGAGCAGCT
GGAACAGTATATGAAGACCTGAGGTATAAGCTCTCGTAGAGTCCCCAGTGGCTACCCTTACAATGCGC
CCACAGTGAAGTTCCTCACGCCCTGCTATCACCCAACGTGGACACCCAGGGTAACATATGCCTGGACAT
CCTGAAGGAAAAGTGGTCTGCCCTGTATGATGTCAGGACCATTCTGCTCTCCATCCAGAGCCTTCTAGGA
GAACCCAACATTGATAGTCCCTTGAACACACATGCTGCCGAGCTCTGAAAAACCCACAGCTTTTAAAG
AGTACCTGCAAGAAACCTACTCAAAGCAGGTACCAGCCAGGAGCCC

ACGCGTACGCGGCCGCTCGAGCAGAACTCATCTCAGAAGAGGATCTGGCAGCAAATGATATCCTGGATT
ACAAGGATGACGACGATAAGGTTTAA

Protein Sequence: >RC208741 protein sequence
Red=Cloning site Green=Tags(s)

MASQNRDPAATSVAAARKGAEPSSGGAARGPVGKRLQQELMTLMMSGDKGISAFPESDNLFKWVGTIHGAA
GTVYEDLRYKLSLEFSPGYPNAPTVKFLTPCYHPNVDTQGNICLDILKEKWSALYDVRTILLSIQSLLG
EPNIDSPLNTHAAELWKNPTAFKKYLQETYSKQVTSQEP

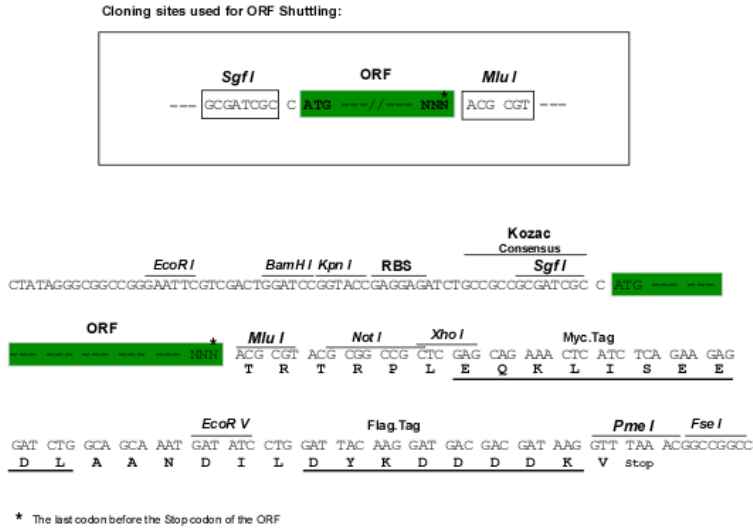
TRTRPLEQKLISEEDLAANDILDYKDDDDKV

Chromatograms: https://cdn.origene.com/chromatograms/mk6091_f07.zip



Restriction Sites: SgfI-MluI

Cloning Scheme:



ACCN: NM_007019

ORF Size: 537 bp

OTI Disclaimer: The molecular sequence of this clone aligns with the gene accession number as a point of reference only. However, individual transcript sequences of the same gene can differ through naturally occurring variations (e.g. polymorphisms), each with its own valid existence. This clone is substantially in agreement with the reference, but a complete review of all prevailing variants is recommended prior to use. [More info](#)

OTI Annotation: This clone was engineered to express the complete ORF with an expression tag. Expression varies depending on the nature of the gene.

Components: The ORF clone is ion-exchange column purified and shipped in a 2D barcoded Matrix tube containing 10ug of transfection-ready, dried plasmid DNA (reconstitute with 100 ul of water).

Reconstitution Method:

1. Centrifuge at 5,000xg for 5min.
2. Carefully open the tube and add 100ul of sterile water to dissolve the DNA.
3. Close the tube and incubate for 10 minutes at room temperature.
4. Briefly vortex the tube and then do a quick spin (less than 5000xg) to concentrate the liquid at the bottom.
5. Store the suspended plasmid at -20°C. The DNA is stable for at least one year from date of shipping when stored at -20°C.

Note: Plasmids are not sterile. For experiments where strict sterility is required, filtration with 0.22um filter is required.

RefSeq: [NM_007019.4](#)

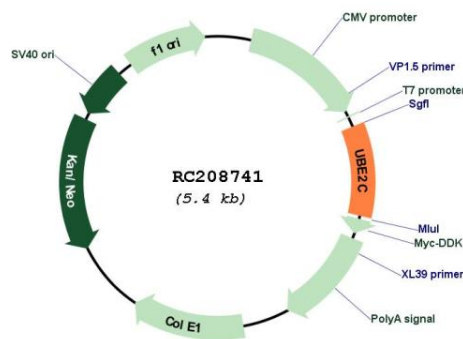
RefSeq Size: 864 bp

RefSeq ORF: 540 bp

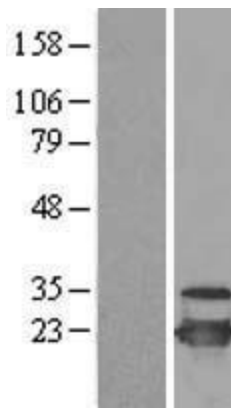
Locus ID: 11065
UniProt ID: [O00762](#)
Cytogenetics: 20q13.12
Domains: UBCc
Protein Families: Druggable Genome
Protein Pathways: Ubiquitin mediated proteolysis
MW: 19.7 kDa

Gene Summary: The modification of proteins with ubiquitin is an important cellular mechanism for targeting abnormal or short-lived proteins for degradation. Ubiquitination involves at least three classes of enzymes: ubiquitin-activating enzymes, ubiquitin-conjugating enzymes, and ubiquitin-protein ligases. This gene encodes a member of the E2 ubiquitin-conjugating enzyme family. The encoded protein is required for the destruction of mitotic cyclins and for cell cycle progression, and may be involved in cancer progression. Multiple transcript variants encoding different isoforms have been found for this gene. Pseudogenes of this gene have been defined on chromosomes 4, 14, 15, 18, and 19. [provided by RefSeq, Aug 2013]

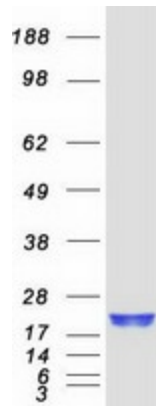
Product images:



Circular map for RC208741



Western blot validation of overexpression lysate (Cat# [LY416256]) using anti-DDK antibody (Cat# [TA50011-100]). Left: Cell lysates from untransfected HEK293T cells; Right: Cell lysates from HEK293T cells transfected with RC208741 using transfection reagent MegaTran 2.0 (Cat# [TT210002]).



Coomassie blue staining of purified UBE2C protein (Cat# [TP308741]). The protein was produced from HEK293T cells transfected with UBE2C cDNA clone (Cat# RC208741) using MegaTran 2.0 (Cat# [TT210002]).