

Product datasheet for **RC208739**

Thrombin Receptor (F2R) (NM_001992) Human Tagged ORF Clone

Product data:

Product Type:	Expression Plasmids
Product Name:	Thrombin Receptor (F2R) (NM_001992) Human Tagged ORF Clone
Tag:	Myc-DDK
Symbol:	Thrombin Receptor
Synonyms:	CF2R; HTR; PAR-1; PAR1; TR
Mammalian Cell Selection:	Neomycin
Vector:	pCMV6-Entry (PS100001)
E. coli Selection:	Kanamycin (25 ug/mL)



[View online »](#)

ORF Nucleotide Sequence:

>RC208739 representing NM_001992
 Red=Cloning site Blue=ORF Green=Tags(s)

TTTTGTAATACGACTCACTATAGGGCGGCCGGAATTCGTCGACTGGATCCGGTACCGAGGAGATCTGCC
 GCC**GCGATCGCC**

ATGGGGCCCGGGGGCTGCTGCTGGTGGCCGCTGCTTCACTGTGCGGCCGCTGTTGTCTGCCCGCA
 CCCGGGCCGCGAGGCCAGAATCAAAAGCAAAATGCCACCTTAGATCCCGGTCAATTTCTCTCAGGAA
 CCCCAATGATAAATATGAACCATTTTGGGAGGATGAGGAGAAAAATGAAAGTGGGTTAACTGAATACAGA
 TTAGTCTCCATCAATAAAAGCAGTCCTCTTCAAAAACTTCTGCATTATCTCAGAAGATGCCTCCG
 GATATTTGACCAGCTCCTGGCTGACACTCTTGTCCCCTGTGTACACCGGAGTGTGTTGTAGTCAGCCT
 CCCACTAAACATCATGGCCATCGTTGTGTTTCATCTGAAAATGAAGTCAAGAAGCCGGCGGTGTGTAC
 ATGCTGCACCTGGCCACGGCAGATGTGCTGTTGTGCTGTGCTCCCTTAAGATCAGCTATTACTTTT
 CCGGCAGTGATTGGCAGTTGGGTCTGAATTGTGTCGCTCGTCACTGCAGCATTTTACTGTAACATGTA
 CGCCTCTATCTTGTCTGACAGTCATAAGCATTGACCGGTTTCTGGCTGTGGTGTATCCATGCAGTCC
 CTCTCCTGGCGTACTCTGGGAAGGGCTTCTTCACTTGTCTGGCCATCTGGGCTTTGGCCATCGCAGGGG
 TAGTGCCTCTGCTCCTCAAGGAGCAAACATCCAGGTGCCCGGGCTCAACATCACTACCTGTCTATGATG
 GCTCAATGAAACCCTGCTCGAAGGCTACTATGCCTACTACTTCTCAGCCTTCTCTGCTGTCTTTT
 GTGCCGCTGATCATTTCCACGGTCTGTTATGTGTCTATCATTGATGCTTAGCTCTCCGAGTTGCCA
 ACCGCAGCAAGAAGTCCCGGGCTTTGTTCTGTGAGTGTGTTTCTGCATCTTATCATTTGCTTCGG
 ACCCACAACGTCTCTGATTGGCATTACTCATTCTTCTCACACTCCACCACAGAGGCTGCCTAC
 TTTGCCACTCCTCTGTGCTGTGTCAGCAGCATAAGCTGCTGCATCGACCCCTAATTTACTATTACG
 CTTCTCTGAGTGCCAGAGGTACGTCTACAGTATCTTATGCTGCAAAGAAAGTCCGATCCAGCAGTTA
 TAACAGCAGTGGCAGTTGATGGCAAGTAAAATGGATACCTGCTCTAGTAACCTGAATAACAGCATATAC
 AAAAAGCTGTAACT

ACGCGTACGCGGCCGCTCGAGCAGAACTCATCTCAGAAGAGGATCTGGCAGCAATGATATCCTGGATT
 ACAAGGATGACGACGATAAGGTTTAA

Protein Sequence:

>RC208739 representing NM_001992
 Red=Cloning site Green=Tags(s)

MGPRLLLLVAACFSLCGPLL SARTRARRPESKATNATLDPRSFLLRNPNDKYEPFWEDEEKNESGLTEYR
 LVSINKSSPLQQLPAFISEDASGYLTSSWLTFLVPSVYTGTVFVVSPLNIMAIVVFILKMKVKKPAVVY
 MLHLATADVLFVSVLPFKISYYFSGSDWQFGSELCRFVTAAFYCNMYASILLMTVISIDRFLAVVYPMQS
 LSWRTLGRASFTCLAIWALAIAGVVPLLLKEQTIQVPLNITTCCHDVLNETLLEGYAYYFSAFSAVFFF
 VPLIISTVCYVSIIRCLSSAVANRSKSRALFLSAAVFCIFIIICFGPTNVLLIAHYSFLSHTSTTEAAY
 FAYLLCVCYSSISCCIDPLIYYYASSECQRYVYSILCKEISSDPSSYNSSGQLMASKMDTSSNLNNSIY
 KKLLT

TRTRPLEQKLISEEDLAANDILDYKDDDDKV

Chromatograms:

https://cdn.origene.com/chromatograms/mg2583_c01.zip

Restriction Sites:

Sgfl-Mlul

Cloning Scheme:


ACCN: NM_001992

ORF Size: 1275 bp

OTI Disclaimer: The molecular sequence of this clone aligns with the gene accession number as a point of reference only. However, individual transcript sequences of the same gene can differ through naturally occurring variations (e.g. polymorphisms), each with its own valid existence. This clone is substantially in agreement with the reference, but a complete review of all prevailing variants is recommended prior to use. [More info](#)

OTI Annotation: This clone was engineered to express the complete ORF with an expression tag. Expression varies depending on the nature of the gene.

Components: The ORF clone is ion-exchange column purified and shipped in a 2D barcoded Matrix tube containing 10ug of transfection-ready, dried plasmid DNA (reconstitute with 100 ul of water).

Reconstitution Method:

1. Centrifuge at 5,000xg for 5min.
2. Carefully open the tube and add 100ul of sterile water to dissolve the DNA.
3. Close the tube and incubate for 10 minutes at room temperature.
4. Briefly vortex the tube and then do a quick spin (less than 5000xg) to concentrate the liquid at the bottom.
5. Store the suspended plasmid at -20°C. The DNA is stable for at least one year from date of shipping when stored at -20°C.

RefSeq: [NM_001992.5](#)

RefSeq Size: 3592 bp

RefSeq ORF: 1278 bp

Locus ID: 2149

UniProt ID: [P25116](#)

Cytogenetics: 5q13.3

Domains: 7tm_1

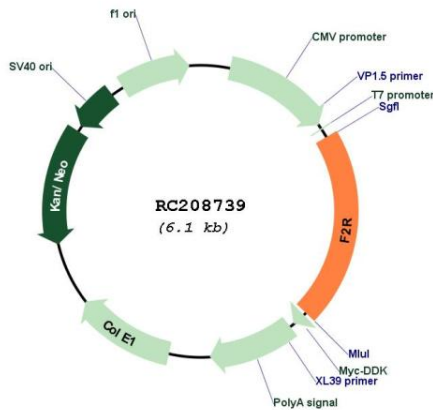
Protein Families: Druggable Genome, GPCR, Transmembrane

Protein Pathways: Calcium signaling pathway, Complement and coagulation cascades, Endocytosis, Neuroactive ligand-receptor interaction, Regulation of actin cytoskeleton

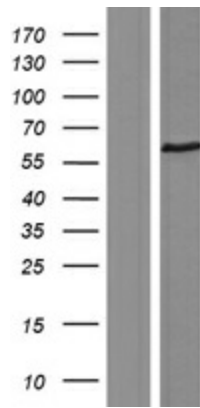
MW: 47.3 kDa

Gene Summary: Coagulation factor II receptor is a 7-transmembrane receptor involved in the regulation of thrombotic response. Proteolytic cleavage leads to the activation of the receptor. F2R is a G-protein coupled receptor family member. Alternative splicing results in multiple transcript variants. [provided by RefSeq, Aug 2015]

Product images:



Circular map for RC208739



Western blot validation of overexpression lysate (Cat# [LY400726]) using anti-DDK antibody (Cat# [TA50011-100]). Left: Cell lysates from untransfected HEK293T cells; Right: Cell lysates from HEK293T cells transfected with RC208739 using transfection reagent MegaTran 2.0 (Cat# [TT210002]).