

Product datasheet for RC208728

VASH1 (NM_014909) Human Tagged ORF Clone

Product data:

Product Type:	Expression Plasmids
Product Name:	VASH1 (NM_014909) Human Tagged ORF Clone
Tag:	Myc-DDK
Symbol:	VASH1
Synonyms:	KIAA1036; TTCP 1
Mammalian Cell Selection:	Neomycin
Vector:	pCMV6-Entry (PS100001)
E. coli Selection:	Kanamycin (25 ug/mL)
ORF Nucleotide Sequence:	>RC208728 ORF sequence Red=Cloning site Blue=ORF Green=Tags(s)

TTTTGTAATACGACTCACTATAGGGCGGCCGGAATTCGTCGACTGGATCCGGTACCGAGGAGATCTGCC
GCC**CGATCGCC**

ATGCCAGGGGGGAAGAAGGTGGCTGGGGGTGGCAGCAGCGGTGCCACTCCAACGTCGCTGCGGCCACCG
CCCCCTCTGGGGTCAGGCGTTTGGAGACCAGCGAAGGAACCTCAGCCCAGAGAGATGAGGAGCCAGAAGA
GGAAGGGGAAGAGGACCTGCGAGACGGAGGCGTCCCCTTCTTTGTCAACCGGGTGGGCTACCTGTGGAT
GAGGCCACCTGGGAAAGGATGTGAAACACGTGGCCAAGATCCACCCGATGGAGAGAAGGTGGCGCAAC
GGATCCGTGGGGCCACAGACCTGCCAAGATCCCATAACCGAGTGTGCCTACGTTCCAGCCGTCTACACC
TGTCCCTGAGCGCCTGGAAGCTGTGCAGCGCTACATCAGAGAGCTGCAGTACAATCACACAGGGACACAG
TTCTTTGAAATTAAGAAGAGCAGACCTCTGACAGGGCTGATGGACCTGGCCAAGGAAATGACCAAAGAGG
CCCTGCCAATCAAATGCCTGGAAGCCGTGATCCTGGGAATTTACCTCACCAACAGCATGCCACCCTGGA
GCGCTTCCCCATCAGCTTCAAGACCTACTTCTCAGGGAACACTTCCGCCACATCGTGCTGGGGGTGAAC
TTCGCGGGCCGCTACGGTGCCTGGGCATGAGTCGGCGCAGGACCTGATGTACAAGCCGCCCGCTTCC
GCACGCTCAGCGAGCTCGTGCTGGACTTCGAGGCCGCCTACGGCCGCTGCTGGCAGTGTCAAGAAGGT
GAAGCTGGGCCAGAGCGTGTACACGACCCGCACAGCGTGGAGCAGATCGAGTGGAAAGCACTCGGTGCTG
GACGTGGAGCGCCTGGGCCGATGACTTCCGCAAGGAGCTGGAGCGCCACGCCGACATGCGGCTCA
AGATTGGCAAAGGGACGGCCCTCCCTCTCCACCAAGGACCGGAAGAAGGATGTTTCTTCCCGCAGCG
GGCCAGTCCAGCCCCACCGCAGGAACAGCCGAGTGAAGACGGCCCTCGGGTACAAGAAGACTTCC
GAGCCAAAGCCATGCCAGACCTAACGGTACCAGATCCGGTCT

ACGCGTACGCGGCCGCTCGAGCAGAACTCATCTCAGAAGAGGATCTGGCAGCAAATGATATCCTGGATT
ACAAGGATGACGACGATAAGGTTAA



[View online »](#)

Protein Sequence: >RC208728 protein sequence
Red=Cloning site Green=Tags(s)

MPGKKVAGGSSGATPTSAAATAPSGVRRLETSEGTSAQRDEEPEEEGEDLRDGGVPPFVNRGGLPVD
 EATWERMWKHVAKIHPDGEKVAQRIRGATDLPKIPISVPTFQPSTPVPERLEAVQRYIRELQYNHTGTQ
 FFEIKSRPLTGLMDLAKEMTKALPIKCLEAVILGIYLTNSMPTLERFPI SFKTYFSGNYFRHIVLGVN
 FAGRYGALGMSRREDLMYKPPAFRTLSELVLDFAAYGRCWHVLLKVKLQGSVSHDPHSVEQIEWKHSVL
 DVERLGRDDFRKELERHARDMRLKIGKGTGPPSPTKDRKKDVSSPQRAQSSPHRRNSRSERRPSGDKKTS
 EPKAMPDLNGYQIRV

TRTRPLEQKLISEEDLAANDILDYKDDDDKV

Chromatograms: https://cdn.origene.com/chromatograms/mk6361_a10.zip

Restriction Sites: SgfI-MluI

Cloning Scheme:



* The last codon before the Stop codon of the ORF

ACCN: NM_014909

ORF Size: 1095 bp

OTI Disclaimer: The molecular sequence of this clone aligns with the gene accession number as a point of reference only. However, individual transcript sequences of the same gene can differ through naturally occurring variations (e.g. polymorphisms), each with its own valid existence. This clone is substantially in agreement with the reference, but a complete review of all prevailing variants is recommended prior to use. [More info](#)

OTI Annotation: This clone was engineered to express the complete ORF with an expression tag. Expression varies depending on the nature of the gene.

Components: The ORF clone is ion-exchange column purified and shipped in a 2D barcoded Matrix tube containing 10ug of transfection-ready, dried plasmid DNA (reconstitute with 100 ul of water).

Reconstitution Method:

1. Centrifuge at 5,000xg for 5min.
2. Carefully open the tube and add 100ul of sterile water to dissolve the DNA.
3. Close the tube and incubate for 10 minutes at room temperature.
4. Briefly vortex the tube and then do a quick spin (less than 5000xg) to concentrate the liquid at the bottom.
5. Store the suspended plasmid at -20°C. The DNA is stable for at least one year from date of shipping when stored at -20°C.

RefSeq: [NM_014909.5](#)

RefSeq Size: 6030 bp

RefSeq ORF: 1098 bp

Locus ID: 22846

UniProt ID: [Q7L8A9](#)

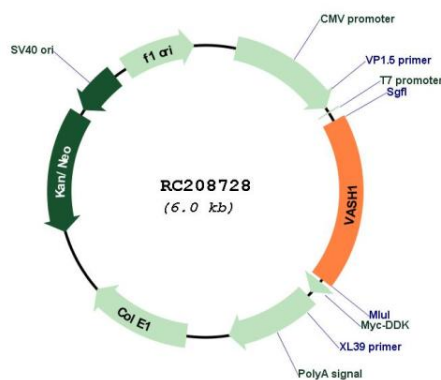
Cytogenetics: 14q24.3

Protein Families: Secreted Protein

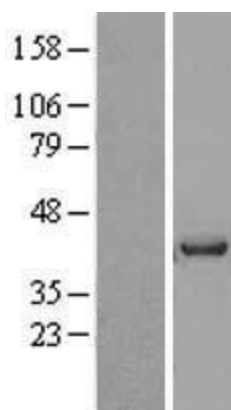
MW: 41 kDa

Gene Summary: Tyrosine carboxypeptidase that removes the C-terminal tyrosine residue of alpha-tubulin, thereby regulating microtubule dynamics and function (PubMed:29146869). Acts as an angiogenesis inhibitor: inhibits migration, proliferation and network formation by endothelial cells as well as angiogenesis (PubMed:15467828, PubMed:16488400, PubMed:16707096, PubMed:19204325). This inhibitory effect is selective to endothelial cells as it does not affect the migration of smooth muscle cells or fibroblasts (PubMed:15467828, PubMed:16488400, PubMed:16707096).[UniProtKB/Swiss-Prot Function]

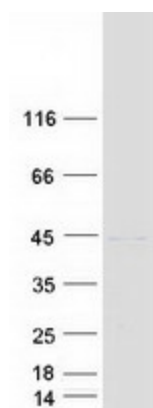
Product images:



Circular map for RC208728



Western blot validation of overexpression lysate (Cat# [LY414940]) using anti-DDK antibody (Cat# [TA50011-100]). Left: Cell lysates from untransfected HEK293T cells; Right: Cell lysates from HEK293T cells transfected with RC208728 using transfection reagent MegaTran 2.0 (Cat# [TT210002]).



Coomassie blue staining of purified VASH1 protein (Cat# [TP308728]). The protein was produced from HEK293T cells transfected with VASH1 cDNA clone (Cat# RC208728) using MegaTran 2.0 (Cat# [TT210002]).