

## Product datasheet for **RC208727**

### **NUP62 (NM\_153718) Human Tagged ORF Clone**

#### **Product data:**

|                           |  |
|---------------------------|--|
| Product Type:             | Expression Plasmids                      |
| Product Name:             | NUP62 (NM_153718) Human Tagged ORF Clone |
| Tag:                      | Myc-DDK                                  |
| Symbol:                   | NUP62                                    |
| Synonyms:                 | IBSN; p62; SNDI                          |
| Mammalian Cell Selection: | Neomycin                                 |
| Vector:                   | pCMV6-Entry (PS100001)                   |
| E. coli Selection:        | Kanamycin (25 ug/mL)                     |



[View online »](#)

**ORF Nucleotide Sequence:**

>RC208727 ORF sequence  
 Red=Cloning site Blue=ORF Green=Tags(s)

TTTTGTAATACGACTCACTATAGGGCGGCCGGAATTCGTCGACTGGATCCGGTACCGAGGAGATCTGCC  
 GCC**CGGATCGCC**

ATGAGCGGGTTTAAATTTGGAGGCACTGGGGCCCTACAGCGGGTTCACGTTTGGCACTGCAAAGACGG  
 CAACAACCACACCTGCTACAGGGTTTTCTTCTCCACCTCTGGCACTGGAGGGTTTAAATTTGGGGCTCC  
 CTTCCAACCAGCCACAAGTACCCCTTCCACCGCCTGTTCTCACTTGCCACCCAGACTCCGGCCACACAG  
 ACGACAGGCTTCACTTTTGAACAGCGACTCTTCTCGGGGGAAGTGGATTTCTTTGGGGATCGGTG  
 CTTCAAAGCTCAACTTGAGCAACACAGCTGCCACCCAGCCATGGCAAACCCAGCGCTTTGGGCTGGG  
 CAGCAGCAACCTCACTAATGCCATATCGAGCACCGTCACCTCCAGCCAGGGCACAGCACCCACCGCTTT  
 GTGTTTGGCCCTCCACCACCTCTGTGGCTCCAGTACCACATCTGGAGGCTTCTATTCACTGGTGAA  
 GCACGGCCCAACCCTCCGGTTTCAACATTGGCTCAGCAGGAATTCAGCCAGCCACGGCACCTGCCAC  
 GTTGCCCTTCACTCCGGCCAGCCAGCAGCCACCACAGCAGGTGCCACACAGCCAGCTGCTCCACACCC  
 ACAGCCACCATCACAGCACTGGGCCAGCCTCTTTGCGTCAATAGCAACTGCTCCAACCTCATCTGCCA  
 CCACTGGACTCTCCCTCTGTACCCTGTGACCACAGCGGGCGCCCCACTGCTGGGACACAGGGTTCAG  
 CTTAAAGGCACCTGGAGCAGTTCCGGCACCTCCACAACAATCCACCCTGCCACCGCCACCGCCACC  
 ACCACCAGCAGCAGCAGCACCCGGCTTTGCCTTGAATTTAAAACCACTGGCGCCAGCCGGGATCCCCA  
 GCAATACAGCAGCTGCCGTGACCCTCCACCTGGCCCTGGCGCAGCTGCAGGGCGGGTCCAGCTCCGC  
 CATGACCTACGCGCAGCTGGAGAGCCTGATCAACAAATGGAGCCTGGAGCTAGAGGACCAGGAGCGGCAC  
 TTCTCCAGCAGCCACCCAGGTCAACGCCTGGGACCGCACGCTGATCGAGAATGGAGAAAAGATACCA  
 GCCTGCACCGCGAGGTGGAGAAGGTGAAGCTGGACCAGAAGAGGCTGGACCAGGAGCTCGACTTCATCCT  
 GTCCCAGCAGAAGGAGCTGGAAGACCTGCTGAGCCCACTGGAGGAGTTGGTCAAGGAGCAGAGCGGGACC  
 ATCTACCTGCAGCAGCGGATGAGGAGCGTGAGAAAACCTACAAGCTGGCTGAGAATCGACGCACAGC  
 TCAAGCGCATGGCCAGGATCTCAAGGACATCATCGAGCACCTGAACACGTCCGGGGCCCCCGCCGACAC  
 CAGTGACCCACTGCAGCAGATCTGCAAGATCCTCAATGCGCACATGGACTCACTGCAGTGGATCGACCAG  
 AACTCGGCCCTGCTGCAGAGGAAGGTGGAGGAGGTGACCAAGGTGTGCGAGGGCCGGCGAAGGAGCAGG  
 AGCGCAGCTTCCGGATCACCTTTGAC

**ACGCGT**ACGCGGCCGCTCGAGCAGAACTCATCTCAGAAGAGGATCTGGCAGCAAATGATATCCTGGATT  
 ACAAGGATGACGACGATAAGGTTTAA

**Protein Sequence:**

>RC208727 protein sequence  
 Red=Cloning site Green=Tags(s)

MSGFNFGGTGAPTGGFTFGTAKTATTPATGFSFSTSGTGGFNGFAPFPATSTPSTGLFSLATQTPATQ  
 TTGFTFGTATLASGGTGFSLGIGASKLNLNNTAATPAMANPSGFLGSSNLTNAISSTVSSQGTAPTGF  
 VFGPSTTSVAPATTSGGFSFTGGSTAQPSGFNIGSAGNSAQPTAPATLPFTPATPAATTAGATQPAAPT  
 TATITSTGPSLFAFIATAPTSSATTGLSLCTPVTTAGAPTAGTQGFSLKAPGAASGTSTTTSTAATAT  
 TTSSSSTTGAFALNKPLAPAGIPSNTAAAVTAPPGPAAAGAAAASSAMTYAQLESINKWSLELEDQERH  
 FLQATQVNAWDRTLIENGEKITSLHREVEKVKLDQKRLDQELDFILSQKLELDLLSPLEELVKEQSGT  
 IYLQHADEEREKTYKLAENIDAQLKRMAQDLKDIEHLNTSGAPADTSDPLQQICKILNAHMDSLQWIDQ  
 NSALLQRKVEEVTKVCEGRRKEQERSFRITFD

**TR**TRPLEQKLISEEDLAANDILDYKDDDDKV

**Chromatograms:**

[https://cdn.origene.com/chromatograms/mk6281\\_e07.zip](https://cdn.origene.com/chromatograms/mk6281_e07.zip)

**Restriction Sites:**

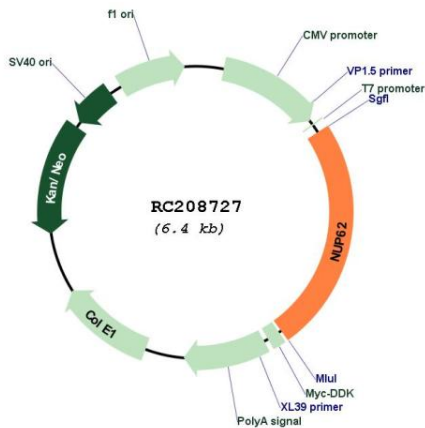
Sgfl-Mlul



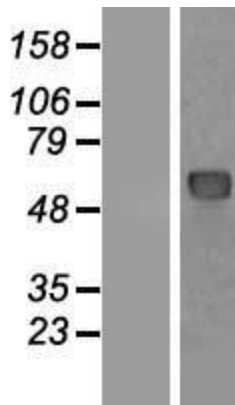
**Domains:** Nsp1\_C  
**Protein Families:** Druggable Genome, Transcription Factors  
**MW:** 53.3 kDa  
**Gene Summary:**

The nuclear pore complex is a massive structure that extends across the nuclear envelope, forming a gateway that regulates the flow of macromolecules between the nucleus and the cytoplasm. Nucleoporins are the main components of the nuclear pore complex in eukaryotic cells. The protein encoded by this gene is a member of the FG-repeat containing nucleoporins and is localized to the nuclear pore central plug. This protein associates with the importin alpha/beta complex which is involved in the import of proteins containing nuclear localization signals. Multiple transcript variants of this gene encode a single protein isoform. [provided by RefSeq, Jul 2008]

**Product images:**



Circular map for RC208727



Western blot validation of overexpression lysate (Cat# [LY413909]) using anti-DDK antibody (Cat# [TA50011-100]). Left: Cell lysates from untransfected HEK293T cells; Right: Cell lysates from HEK293T cells transfected with [RC210581] using transfection reagent MegaTran 2.0 (Cat# [TT210002]).