

Product datasheet for RC208726

VPS28 (NM_183057) Human Tagged ORF Clone

Product data:

Product Type: Expression Plasmids
 Product Name: VPS28 (NM_183057) Human Tagged ORF Clone
 Tag: Myc-DDK
 Symbol: VPS28
 Mammalian Cell Selection: Neomycin
 Vector: pCMV6-Entry (PS100001)
 E. coli Selection: Kanamycin (25 ug/mL)
 ORF Nucleotide Sequence: >RC208726 ORF sequence
 Red=Cloning site Blue=ORF Green=Tags(s)

TTTTGTAATACGACTCACTATAGGGCGGCCGGAATTCGTCGACTGGATCCGGTACCGAGGAGATCTGCC
 GCCCGATCGCC

ATGTTTCATGGGATCCCAGCCACGCCGGGCATAGGAGCCCTGGGAACAAGCCGGAGCTGTATGAGGAAG
 TGAAGTTGTACAAGAACGCCGGGAGAGGGAGAAGTACGACAACATGGCAGAGCTGTTTGGCGTGGTGAA
 GACAATGCAAGCCCTGGAGAAGGCCTACATCAAGGACTGTGTCTCCCCAGCGAGTACACTGCAGCCTGC
 TCCCGGCTCCTGGTCCAATACAAAGCTGCCTCAGGCAGGTCCAGGGCTCAGAAATCAGCTCTATTGACG
 AATTCTGCCGCAAGTTCGCGCTGGACTGCCCGTGGCCATGGAGCGGATCAAGGAGGACCCGCCATCAC
 CATCAAGGACGACAAGGGCAACCTCAACCGCTGCATCGCAGACGTGGTCTCGCTCTTCATCACGGTCATG
 GACAAGCTGCGCCTGGAGATCCGCGCCATGGATGAGATCCAGCCCGACCTGCGAGAGCTGATGGAGACCA
 TGCACCGCATGAGCCACCTCCCACCCGACTTTGAGGGCCGCCAGACGGTCAGCCAGTGGTGGGTGTCCCT
 CCCAGCCAGGACAGCCCGCAGTGCCCGAGACCTCCCAGCCAGGCGGAGCCCCGAGTGGCCCTGAGG
 CCCTCAGCCCCACATGCCCTGTGCTGCACTCCCAGGCTGCAGACCTGAGCGGCATGTCGGCGTCAGA

ACGCGTACGCGGCCGCTCGAGCAGAACTCATCTCAGAAGAGGATCTGGCAGCAAATGATATCCTGGATT
 ACAAGGATGACGACGATAAGGTTTAA

Protein Sequence: >RC208726 protein sequence
 Red=Cloning site Green=Tags(s)

MFHGIPATPGIGAPGNKPELYEEVKLYKNAREREKYDNMAELFAVVKTMQALEKAYIKDCVSPSEYTAAC
 SRLLVQYKAAFRQVQGSEISSIDEFCRKFRLDCPLAMERIKEDRPITIKDDKGNLNRCIADVVSFLITVM
 DKLRLEIRAMDEIQPDLRELMETMHRMSHLLPPDFEGRQTVSQWVWVSLPARQSPAVPETLPARRSPAVPLR
 PSAPTCPVLHSQAADPERHVGVR

TRTRPLEQKLISEEDLAANDILDYKDDDDKV



Chromatograms: https://cdn.origene.com/chromatograms/mk6361_a01.zip

Restriction Sites: SgfI-MluI

Cloning Scheme:



ACCN: NM_183057

ORF Size: 699 bp

OTI Disclaimer: The molecular sequence of this clone aligns with the gene accession number as a point of reference only. However, individual transcript sequences of the same gene can differ through naturally occurring variations (e.g. polymorphisms), each with its own valid existence. This clone is substantially in agreement with the reference, but a complete review of all prevailing variants is recommended prior to use. [More info](#)

OTI Annotation: This clone was engineered to express the complete ORF with an expression tag. Expression varies depending on the nature of the gene.

Components: The ORF clone is ion-exchange column purified and shipped in a 2D barcoded Matrix tube containing 10ug of transfection-ready, dried plasmid DNA (reconstitute with 100 ul of water).

Reconstitution Method:

1. Centrifuge at 5,000xg for 5min.
2. Carefully open the tube and add 100ul of sterile water to dissolve the DNA.
3. Close the tube and incubate for 10 minutes at room temperature.
4. Briefly vortex the tube and then do a quick spin (less than 5000xg) to concentrate the liquid at the bottom.
5. Store the suspended plasmid at -20°C. The DNA is stable for at least one year from date of shipping when stored at -20°C.

RefSeq: [NM_183057.1](#), [NP_898880.1](#)

RefSeq Size: 1112 bp

RefSeq ORF: 702 bp

Locus ID: 51160

UniProt ID: [Q9UK41](#)

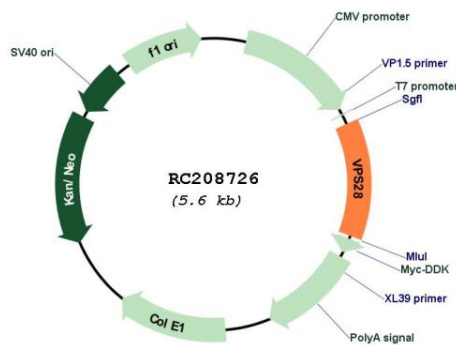
Cytogenetics: 8q24.3

Protein Pathways: Endocytosis

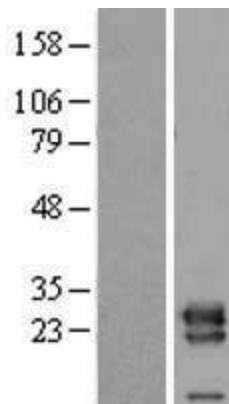
MW: 26.5 kDa

Gene Summary: This gene encodes a protein subunit of the ESCRT-I complex (endosomal complexes required for transport), which functions in the transport and sorting of proteins into subcellular vesicles. This complex can also be hijacked to facilitate the budding of enveloped viruses from the cell membrane. Alternative splicing results in multiple transcript variants encoding different isoforms. [provided by RefSeq, Jul 2013]

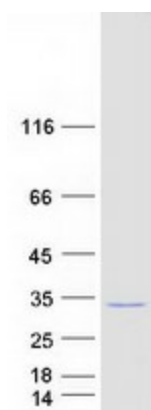
Product images:



Circular map for RC208726



Western blot validation of overexpression lysate (Cat# [LY405220]) using anti-DDK antibody (Cat# [TA50011-100]). Left: Cell lysates from untransfected HEK293T cells; Right: Cell lysates from HEK293T cells transfected with RC208726 using transfection reagent MegaTran 2.0 (Cat# [TT210002]).



Coomassie blue staining of purified VPS28 protein (Cat# [TP308726]). The protein was produced from HEK293T cells transfected with VPS28 cDNA clone (Cat# RC208726) using MegaTran 2.0 (Cat# [TT210002]).